



Chipsmall Limited consists of a professional team with an average of over 10 year of expertise in the distribution of electronic components. Based in Hongkong, we have already established firm and mutual-benefit business relationships with customers from,Europe,America and south Asia,supplying obsolete and hard-to-find components to meet their specific needs.

With the principle of "Quality Parts,Customers Priority,Honest Operation,and Considerate Service",our business mainly focus on the distribution of electronic components. Line cards we deal with include Microchip,ALPS,ROHM,Xilinx,Pulse,ON,Everlight and Freescale. Main products comprise IC,Modules,Potentiometer,IC Socket,Relay,Connector.Our parts cover such applications as commercial,industrial, and automotives areas.

We are looking forward to setting up business relationship with you and hope to provide you with the best service and solution. Let us make a better world for our industry!



Contact us

Tel: +86-755-8981 8866 Fax: +86-755-8427 6832

Email & Skype: info@chipsmall.com Web: www.chipsmall.com

Address: A1208, Overseas Decoration Building, #122 Zhenhua RD., Futian, Shenzhen, China



PICDEM™ HPC Explorer Board

Summary

The PICDEM HPC Explorer Board is the latest 64/80 TQFP demonstration board for evaluating Microchip Technology's PIC18F and PIC18FXXJXX families of devices. It comes populated with a PIC18F8722 MCU. Direct connection support is available for the MPLAB® ICE 2000 and MPLAB ICE 4000 processor modules, plug-in modules and MPLAB ICD 2 In-Circuit Programmer.

Software

The PIC18F8722 MCU is preprogrammed with demonstration software which displays information on the Windows® HyperTerminal program via the serial port.

Use the following settings:

- 57600 baud
- 8 data bits
- No Parity
- 1 Stop bit
- No Flow Control
- Autodetect terminal emulation

On power-up, PIC18F8722 will continuously display the LED states, potentiometer voltage, RB0 button state, temperature and relative time in minutes and seconds. NOTE: Pressing the RB0 button during power-up enables the bootloader. The LEDs can be toggled by pressing the 1 through 8 keys.

Additional Features

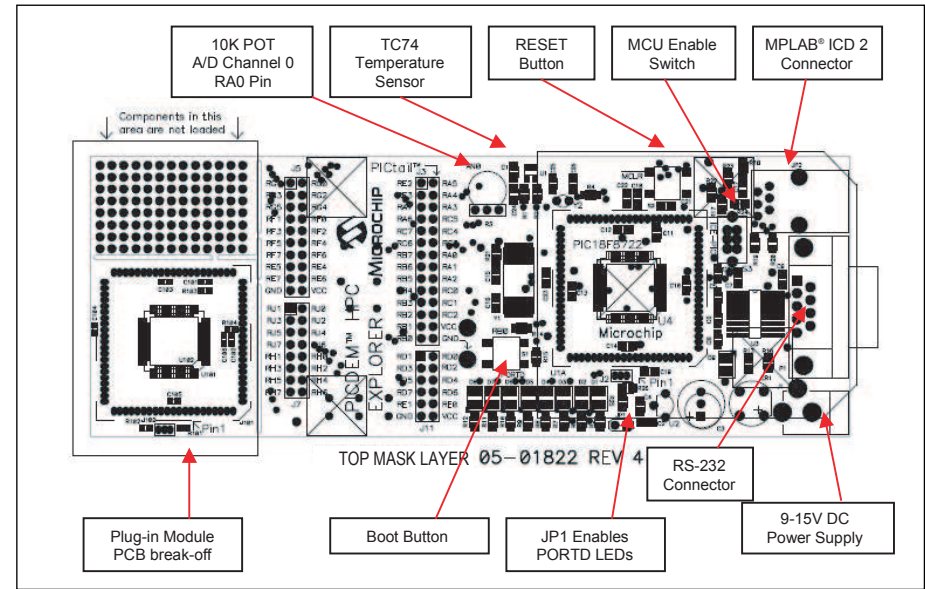
- PIC18F8722, 128K Flash, 80-pin TQFP microcontroller
- Full pin break-out for easy wire wrap/prototyping
- Daughter board and MPLAB ICE 2000/MPLAB ICE 4000 connector (with switch to disable on board processor)
- 10 MHz crystal oscillator (to be used with internal PLL to provide 40 MHz operation)
- Convenient connection for MPLAB ICD 2 (In-Circuit Debugger) for in-circuit programming and debugging
- Power supply connector and programmable voltage regulator, capable of operation from 2.0-5.5V (requires any standard 9-15V power supply, also available separately)
- Potentiometer (connected to 10-bit A/D, analog input channel)
- Temperature sensor demo included (illustrates Microchip's award winning TC74 device)
- 8 LEDs (connected to PORTD with jumper disable)
- RS-232 port (9-pin D type connector, UART1)
- Reset button
- Bootloader button
- Extended PICtail™ connector, to allow connection to standard and extended expansion boards
- Serial bootloader ready (see AN851)
- 32 KHz crystal for Real-time Clock demonstration

To obtain the most recent and complete documentation for this demonstration board, including:

- User's Guide
- Board Description
- Board Schematics
- Source Code
- Application Examples
- Links to Web Seminars

Please refer to the following web site: <http://www.microchip.com/HPCEXplorer>

PICDEM™ HPC Explorer Board Parts Placement Diagram (DM183022)



Americas

Atlanta (770) 640-0034
 Boston (978) 692-3848
 Chicago (630) 285-0071
 Dallas (972) 818-7423
 Detroit (248) 538-2250
 Kokomo (765) 864-8360
 Los Angeles (949) 462-9523
 Phoenix (480) 792-7200
 San Jose (650) 215-1444
 Toronto (905) 673-0699

Asia/Pacific

Australia - Sydney 61-2-9868-6733
 China - Beijing 86-10-8528-2100
 China - Chengdu 86-28-8676-6200
 China - Fuzhou 86-591-8750-3506
 China - Hong Kong SAR 852-2401-1200
 China - Qingdao 86-532-502-7355
 China - Shanghai 86-21-5407-5533
 China - Shenyang 86-24-2334-2829
 China - Shenzhen 86-755-8203-2660
 China - Shunde 86-757-2839-5507
 India - Bangalore 91-80-2229-0061
 India - New Delhi 91-11-5160-8632
 Japan - Kanagawa 81-45-471-6166
 Korea - Seoul 82-2-554-7200
 Singapore 65-6334-8870
 Taiwan - Hsinchu 886-3-572-9526
 Taiwan - Taipei 886-2-2500-6610
 Taiwan - Kaohsiung 886-7-536-4818

Europe

Austria - Weis 43-7242-2244-399
 Denmark - Ballerup 45-4420-9895
 France - Massy 33-1-69-53-63-20
 Germany - Ismaning 49-89-627-144-0
 Italy - Milan 39-0331-742611
 Netherlands - Drunen 31-416-690399
 England - Berkshire 44-118-921-5869

As of 2/10/05



Microchip Technology Inc. • 2355 West Chandler Blvd. • Chandler, AZ 85224-6199
www.microchip.com

The Microchip name and logo, the Microchip logo, MPLAB, PIC and PICmicro are registered trademarks of Microchip Technology Incorporated in the U.S.A. and other countries. In-Circuit Serial Programming, ICSP and PICtail are trademarks of Microchip Technology Incorporated in the U.S.A. and other countries. All other trademarks mentioned herein are property of their respective companies. © 2005, Microchip Technology Incorporated, Printed in the U.S.A. All Rights Reserved. 3/05

DS51540A

