



Chipsmall Limited consists of a professional team with an average of over 10 year of expertise in the distribution of electronic components. Based in Hongkong, we have already established firm and mutual-benefit business relationships with customers from,Europe,America and south Asia,supplying obsolete and hard-to-find components to meet their specific needs.

With the principle of “Quality Parts,Customers Priority,Honest Operation,and Considerate Service”,our business mainly focus on the distribution of electronic components. Line cards we deal with include Microchip,ALPS,ROHM,Xilinx,Pulse,ON,Everlight and Freescale. Main products comprise IC,Modules,Potentiometer,IC Socket,Relay,Connector.Our parts cover such applications as commercial,industrial, and automotives areas.

We are looking forward to setting up business relationship with you and hope to provide you with the best service and solution. Let us make a better world for our industry!



Contact us

Tel: +86-755-8981 8866 Fax: +86-755-8427 6832

Email & Skype: info@chipsmall.com Web: www.chipsmall.com

Address: A1208, Overseas Decoration Building, #122 Zhenhua RD., Futian, Shenzhen, China



C&K DM Series Miniature Illuminated Power Rocker Switches



Features/Benefits

- 3 AMPS to 10 AMPS
- Illuminated LED
- Positive detent
- Recessed bracket available—prevents accidental actuation

Typical Applications

- Instrumentation
- Industrial
- Copy machines



Specifications

CONTACT RATING: DM14 and DM24 Models: 3 AMPS @ 125 V AC; 2 AMPS @ 250 V AC. DM54 and DM64 Models: 10 AMPS @ 125 V AC; 5 AMPS @ 250 V AC (UL/CSA).

ELECTRICAL LIFE: 10,000 make-and-break cycles at full load.

INSULATION RESISTANCE: $10^9 \Omega$ min.

DIELECTRIC STRENGTH: 1,000 Vrms min. @ sea level.

NOTE: Specification and materials listed above are for standard switches. For information on specific and custom switches, consult Customer Service Center.

Materials

HOUSING: 6/6 nylon (UL94V-2), black.

ACTUATOR: 6/6 nylon (UL94V-2), black.

MOVABLE CONTACTS: DM14 and DM24 Models: Copper, silver plated. DM54 and DM64 Models: Coin silver, silver plated.

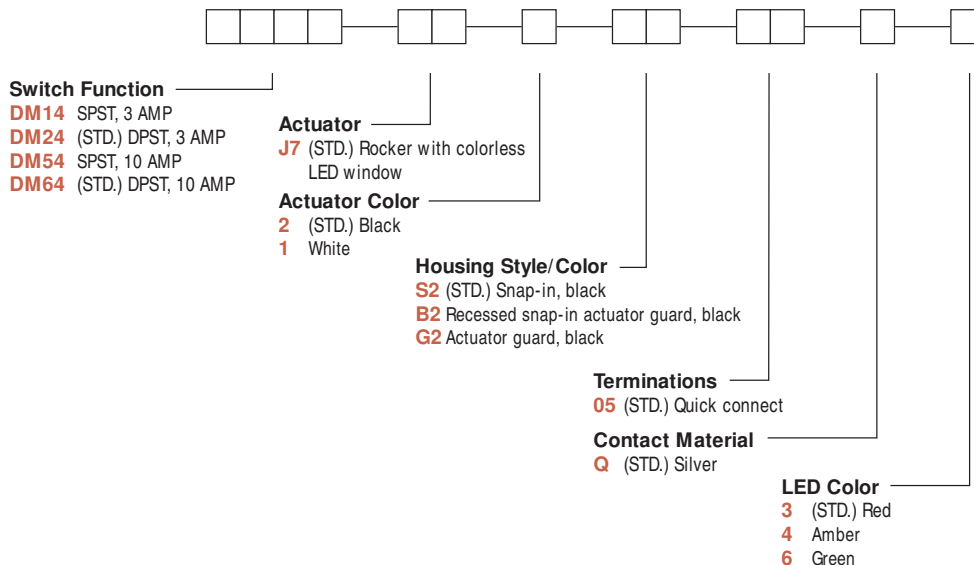
STATIONARY CONTACTS & TERMINALS: Copper or brass, silver plated.

LED TERMINALS: Brass, unplated.

CONTACT SPRING: Music wire or stainless steel.






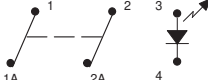

Build-A-Switch

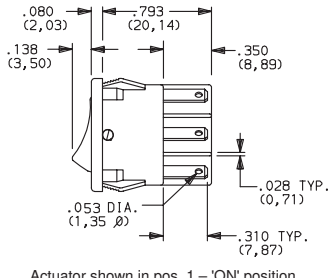
To order, simply select desired option from each category and place in the appropriate box. Available options are shown and described on pages G-61 and G-62. For additional options not shown in catalog, consult Customer Service Center.



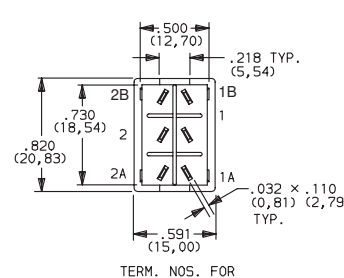
C&K DM Series Miniature Illuminated Power Rocker Switches

SWITCH FUNCTION

NO. POLES	MODEL NO.	AMP RATING*	SWITCH FUNCTION		CONNECTED TERMINALS		SCHEMATIC
			POS. 1	POS. 2	POS. 1	POS. 2	
							
SP	DM14 DM54	3 10	ON	OFF	1-1A	OPEN	SPST 
DP	DM24 (STD.) DM64 (STD.)	3 10	ON	OFF	1-1A, 2-2A	OPEN	DPST 
DPDT 							



Actuator shown in pos. 1 - 'ON' position.



TERM. NOS. FOR REFERENCE ONLY
SPST models (DM14 & DM54), omit terminals 2 and 2A.

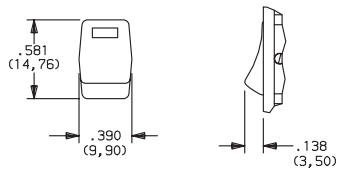
Part number shown: DM24J72S205Q3

* RATINGS: DM14 and DM24 models: 3 AMPS @ 125 V AC; 2 AMPS @ 250 V AC. DM54 and DM64 models: 10 AMPS @ 125 V AC; 5 AMPS @ 250 V AC.

All models   with all options.

ACTUATOR

J7 (STD.) ROCKER WITH COLORLESS LED WINDOW

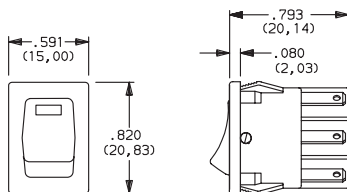


OPTION CODE	ACTUATOR COLOR
2	(STD.) BLACK
1	WHITE

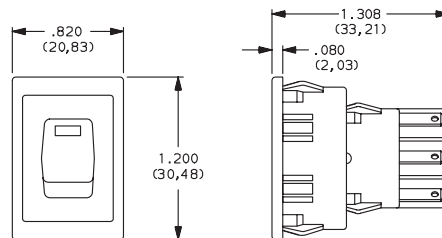
NOTE: Other colors available, consult Customer Service Center.

HOUSING STYLE/COLOR

S2 (STD.) SNAP-IN, BLACK



B2 RECESSED SNAP-IN ACTUATOR GUARD, BLACK



NOTE: Housing finish: matte. Other colors available, consult Customer Service Center.



Dimensions are shown: IN (mm)
Dimensions subject to change

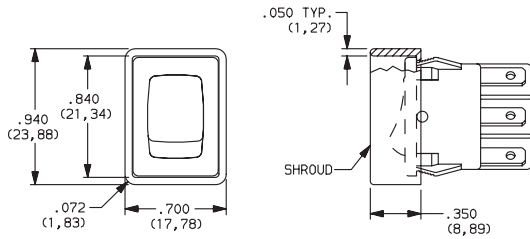
Rocker

C&K DM Series Miniature Illuminated Power Rocker Switches

HOUSING STYLE/COLOR

G2 ACTUATOR GUARD, BLACK

New!



PANEL MOUNTING



'S2' & 'G2' housing style

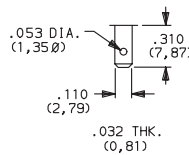
'B2' housing style

NOTE: Blank insert available for SP models only, see page G-63.

PANEL THK.	DIM 'A' 'S2' & 'G2' HOUSING STYLES	DIM 'A' 'B2' HOUSING STYLES
.030-.049 (0,75) (1,25)	.756 (19,20)	1.068 (27,13)
.049-.079 (1,25) (2,00)	.764 (19,40)	1.076 (27,33)
.079-.118 (2,00) (3,00)	.780 (19,80)	1.092 (27,74)

TERMINATIONS

05 (STD.) QUICK CONNECT



CONTACT MATERIAL

OPTION CODE	CONTACT AND TERMINAL MATERIAL	RATINGS	
		POWER	
Q (STD.)	SILVER 1,2		DM14 and DM24 Models: 3 AMPS @ 125 V AC; 2 AMPS @ 250 V AC. DM54 and DM64 Models: 10 AMPS @ 125 V AC; 5 AMPS @ 250 V AC.

CONTACT MATERIAL/APPLICATION RECOMMENDATIONS – SEE SECTION N.

¹ MOVABLE CONTACTS: DM14 and DM24 models: Copper, silver plated.
DM54 and DM64 models: Coin silver, silver plated.

All models with all options.

² STATIONARY CONTACTS & TERMINALS: Copper or brass, silver plated.

LED COLOR

OPTION CODE	LED COLOR	FORWARD V _{FD}	CURRENT I _{LED}	REVERSE V _R	INTENSITY M _{CD}	RECOMMENDED RESISTOR @ VOLTAGE		
						5V	12V	24V
3 (STD.)	Red	2.1	10	4V	1.6 typ.	270	1K	2.2K
4	Amber	2.2	20	4V	2.5 typ.	150	510	1.2K
6	Green	2.1	20	4V	2.0 typ.	150	510	1.2K



Dimensions are shown: IN (mm)
Dimensions subject to change

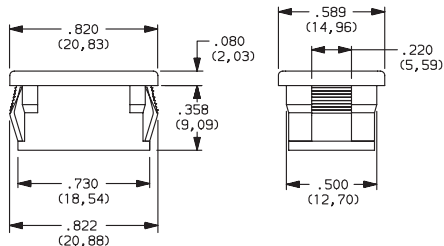
www.ittcannon.com



C&K DM Series Miniature Illuminated Power Rocker Switches

AVAILABLE HARDWARE

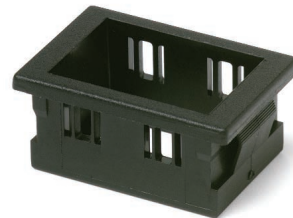
Blank Insert



PART NO.
057190200

Material: Zinc nylon 6/6
Finish: Matte

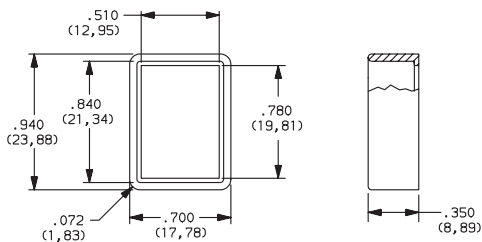
Recessed Bracket



PART NO.
057090100

Material: 6/6 Nylon
Finish: Matte

Actuator Gaurd



PART NO.
104C02000

Material: PBT thermoplastic
Finish: Matte

Rocker

