



Chipsmall Limited consists of a professional team with an average of over 10 year of expertise in the distribution of electronic components. Based in Hongkong, we have already established firm and mutual-benefit business relationships with customers from,Europe,America and south Asia,supplying obsolete and hard-to-find components to meet their specific needs.

With the principle of "Quality Parts,Customers Priority,Honest Operation,and Considerate Service",our business mainly focus on the distribution of electronic components. Line cards we deal with include Microchip,ALPS,ROHM,Xilinx,Pulse,ON,Everlight and Freescale. Main products comprise IC,Modules,Potentiometer,IC Socket,Relay,Connector.Our parts cover such applications as commercial,industrial, and automotives areas.

We are looking forward to setting up business relationship with you and hope to provide you with the best service and solution. Let us make a better world for our industry!



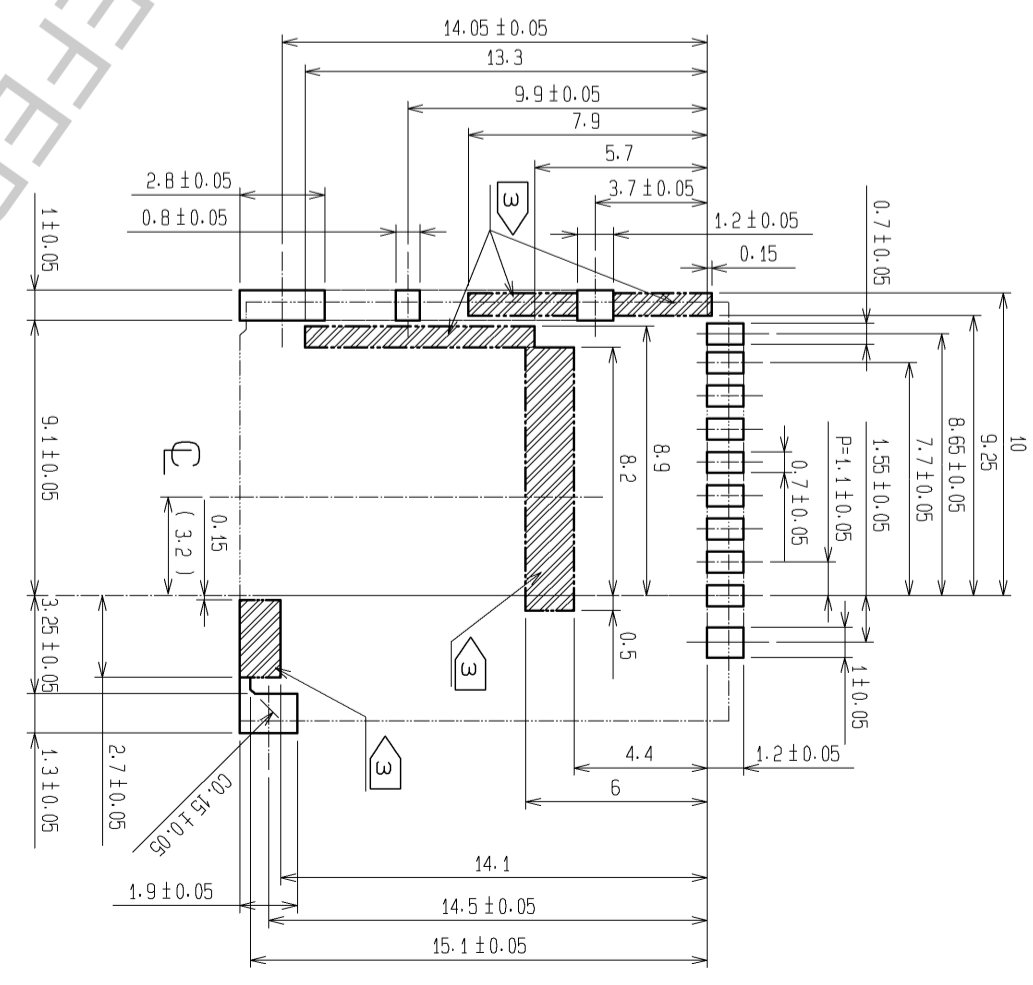
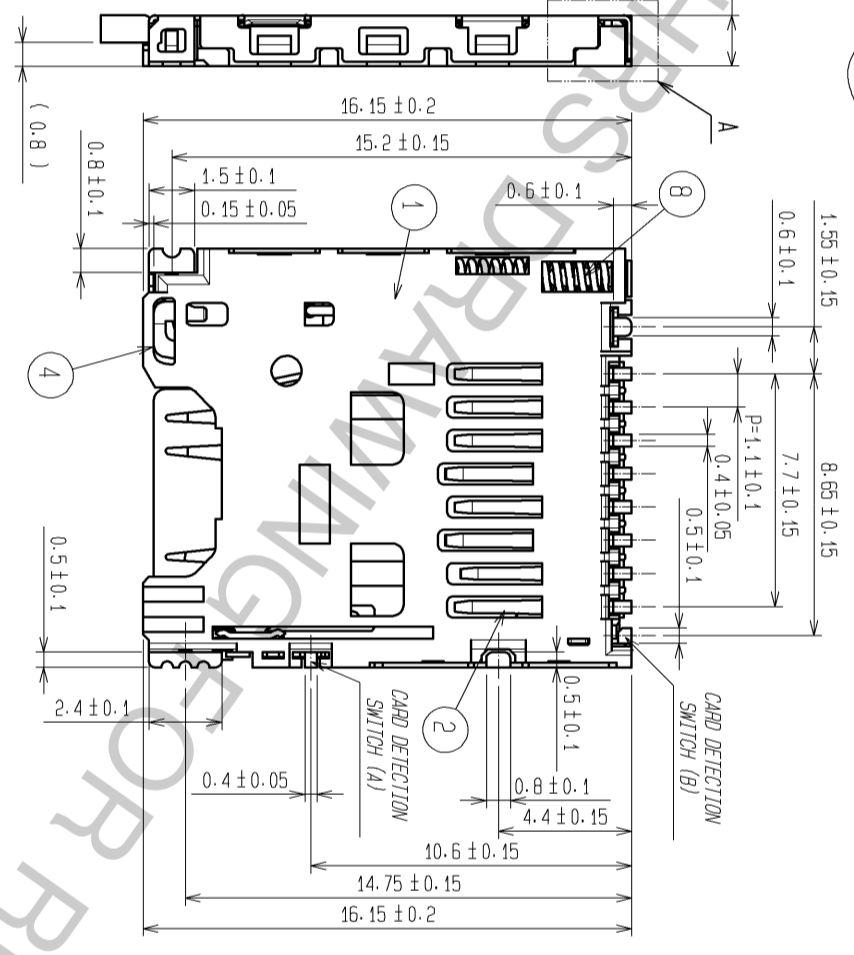
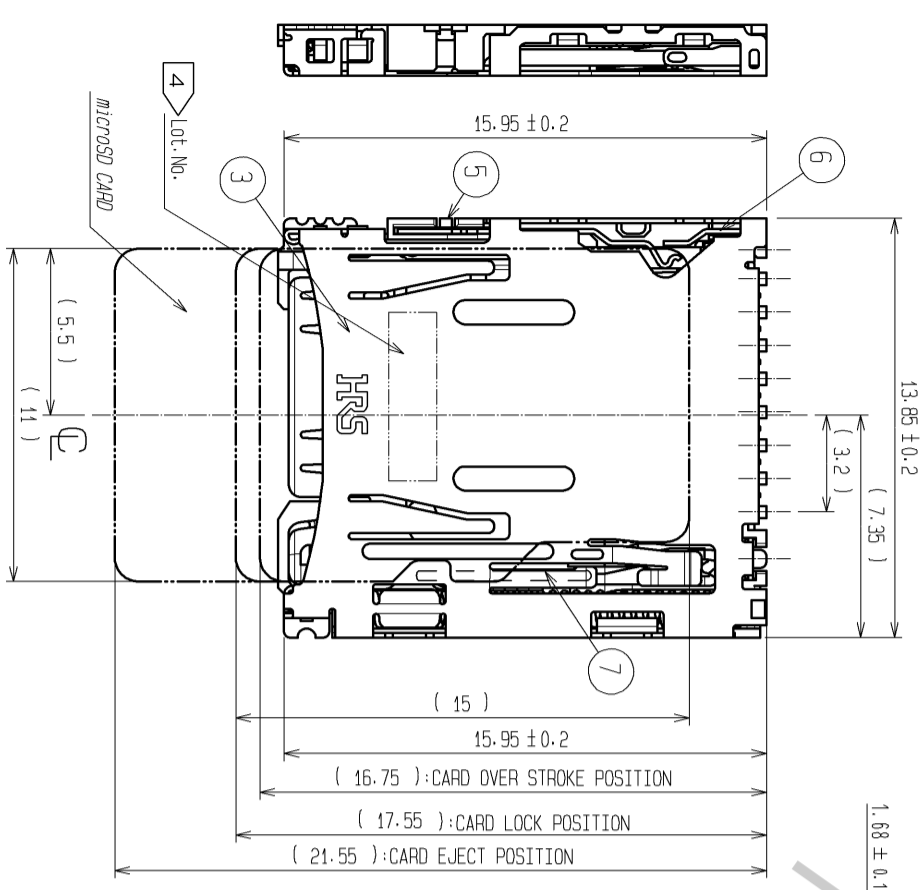
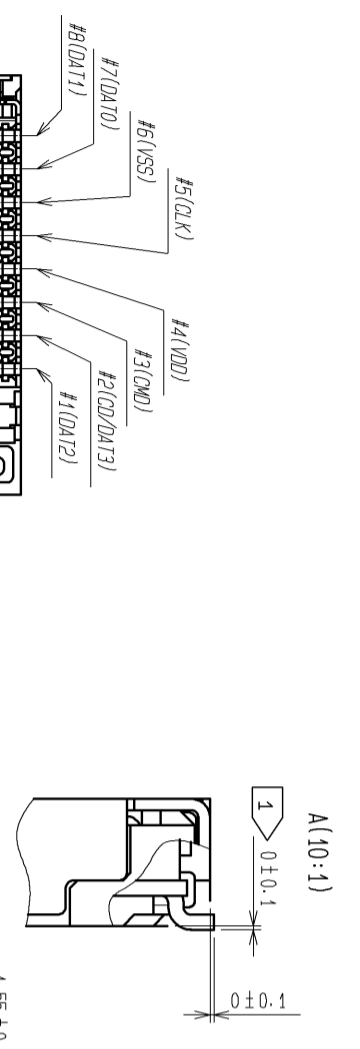
Contact us

Tel: +86-755-8981 8866 Fax: +86-755-8427 6832

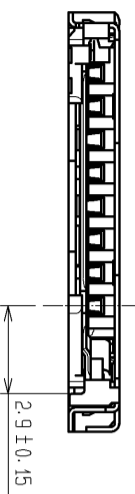
Email & Skype: info@chipsmall.com Web: www.chipsmall.com

Address: A1208, Overseas Decoration Building, #122 Zhenhua RD., Futian, Shenzhen, China

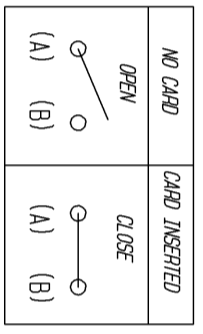




RECOMMENDED PCB LAYOUT (MOUNTING SIDE)



NOTE.
 1 CO-PLANARITY SHALL BE 0.1mm MAX.
 2 CARD DETECTION SWITCH



3 NO PATTERNS ARE PERMITTED IN THIS OBLIQUE-HATCHED AREA.
 4 Lot.No. SHALL BE INDICATED AS SHOWN.
 e.g. 0 A 7 1
 PRODUCTION LINE: LINE No.1
 DATE: 7th
 MONTH: Jan.
 YEAR: 2010

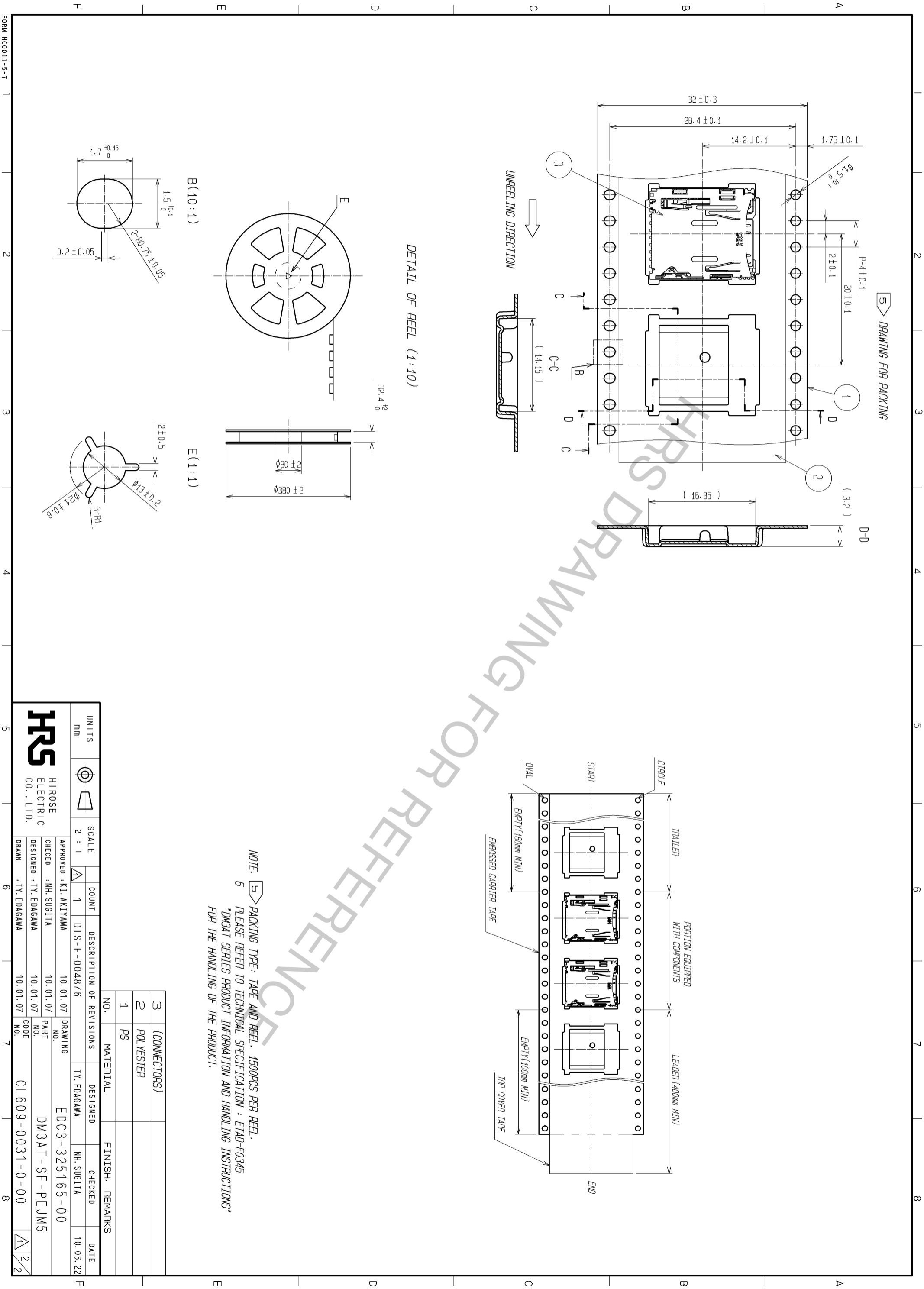
4 MANUFACTURING DATE

YEAR	MONTH	DATE	YEAR	MONTH	DATE	YEAR	MONTH	DATE	YEAR	MONTH	DATE
2010	0	Jan.	A	1	11	B	21	M	2010	0	Jan.
2010	1	Feb.	B	2	12	C	22	N	2010	1	Feb.
2010	2	Mar.	C	3	13	D	23	P	2010	2	Mar.
2010	3	Apr.	D	4	14	E	24	O	2010	3	Apr.
2010	4	May.	E	5	15	F	25	R	2010	4	May.
2010	5	Jun.	F	6	16	G	26	S	2010	5	Jun.
2010	6	Jul.	G	7	17	H	27	T	2010	6	Jul.
2010	7	Aug.	H	8	18	J	28	U	2010	7	Aug.
2010	8	Sep.	I	9	19	K	29	V	2010	8	Sep.
2010	9	Oct.	J	10	20	L	30	W	2010	9	Oct.
2010	10	Nov.	K						2010	10	Nov.
2010	11	Dec.	L						2010	11	Dec.

4	STAINLESS STEEL	MOUNTING AREA	Ni10.5µm+Au0.03µm	8	STAINLESS STEEL		
3	STAINLESS STEEL	CONTACT AREA	Ni3µm+Au0.1µm	7	STAINLESS STEEL		
2	PHOSPHOR BRONZE	MOUNTING AREA	Ni3µm+Au0.03µm	5, 6	PHOSPHOR BRONZE	CONTACT AREA	Ni1.5µm+Au0.1µm
1	LCP	FINISH	UL94V-0			MOUNTING AREA	Ni1.5µm+Au0.03µm

UNITS	SCALE	COUNT	DESCRIPTION OF REVISIONS	DESIGNED	CHECKED	DATE
mm	FREE	1	DIS-F-004876	TY. EDAGAWA	NH. SUGITA	10.06.22

APPROVED	KI. AKIYAMA	10.01.07	DRAWING	EDC3-325165-00
CHECKED	NH. SUGITA	10.01.07	PART	DM3AT-SF-PEJMS
DESIGNED	TY. EDAGAWA	10.01.07	CODE	CL609-0031-0-00
DRAWN	TY. EDAGAWA	10.01.07	NO.	



DETAIL OF REEL (1:10)

B (10:1)

E (1:1)

NOTE: 5 PACKING TYPE: TAPE AND REEL. 1500PCS PER REEL.
 6 PLEASE REFER TO TECHNICAL SPECIFICATION : ETAD-F0345
 DM3AT SERIES PRODUCT INFORMATION AND HANDLING INSTRUCTIONS
 FOR THE HANDLING OF THE PRODUCT.

NO.	MATERIAL	FINISH, REMARKS
3	(CONNECTORS)	
2	POLYESTER	
1	PS	

UNITS	SCALE	COUNT	DESCRIPTION OF REVISIONS	DESIGNED	CHECKED	DATE
mm	2:1	1	DIS-F-004876	TY. EDAGAWA	NH. SUGITA	10.06.22
APPROVED: KI. AKIYAMA			10.01.07	TY. EDAGAWA		
CHECKED: NH. SUGITA			10.01.07			
DESIGNED: TY. EDAGAWA			10.01.07			
DRAWN: TY. EDAGAWA			10.01.07			
HRS HIROSE ELECTRIC CO., LTD.						
EDC3-325165-00						
DM3AT-SF-PEJMS						
CL609-0031-0-00						

FORM HC0011-5-7