



Chipsmall Limited consists of a professional team with an average of over 10 year of expertise in the distribution of electronic components. Based in Hongkong, we have already established firm and mutual-benefit business relationships with customers from,Europe,America and south Asia,supplying obsolete and hard-to-find components to meet their specific needs.

With the principle of “Quality Parts,Customers Priority,Honest Operation,and Considerate Service”,our business mainly focus on the distribution of electronic components. Line cards we deal with include Microchip,ALPS,ROHM,Xilinx,Pulse,ON,Everlight and Freescale. Main products comprise IC,Modules,Potentiometer,IC Socket,Relay,Connector.Our parts cover such applications as commercial,industrial, and automotives areas.

We are looking forward to setting up business relationship with you and hope to provide you with the best service and solution. Let us make a better world for our industry!



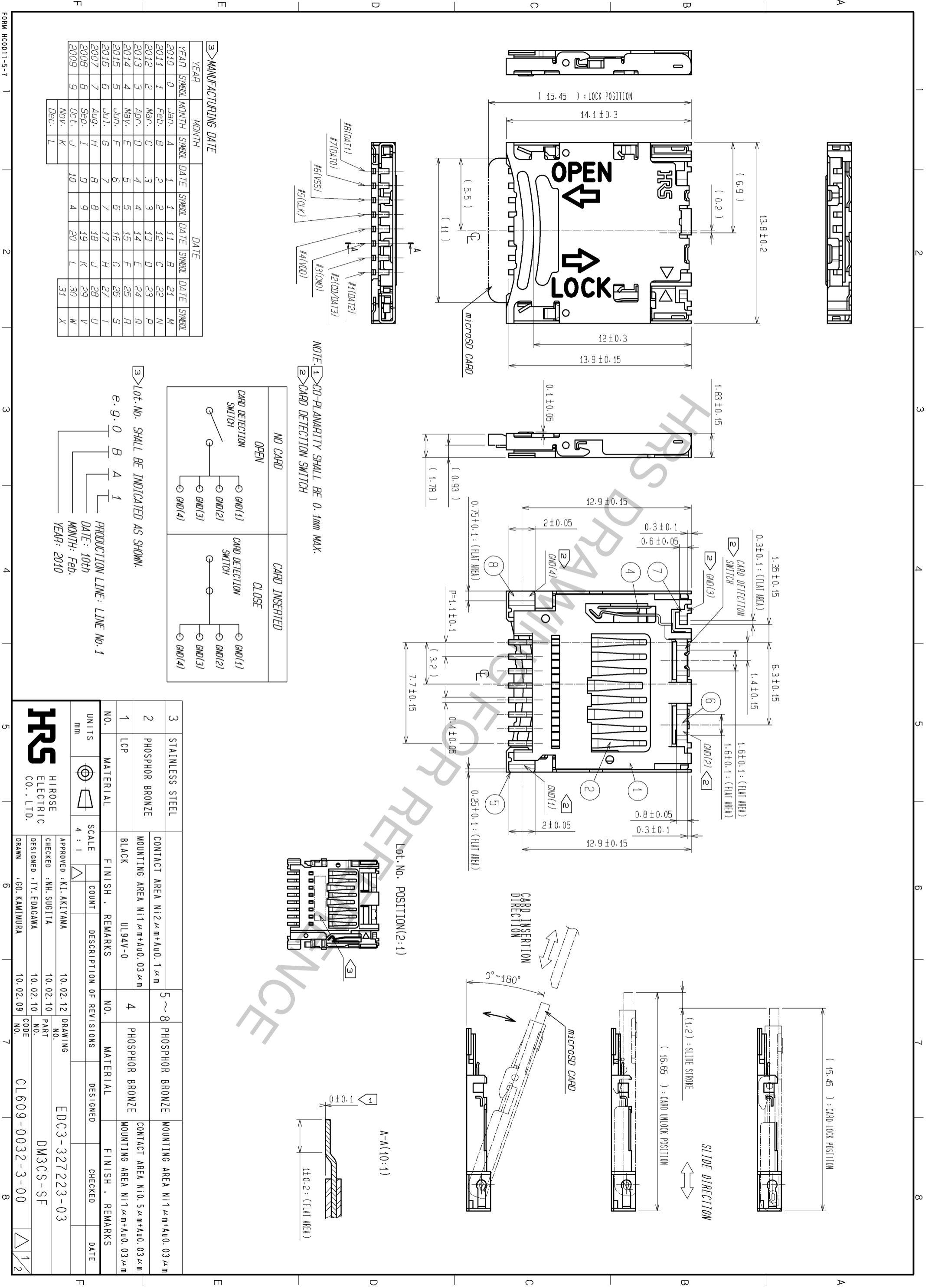
## Contact us

Tel: +86-755-8981 8866 Fax: +86-755-8427 6832

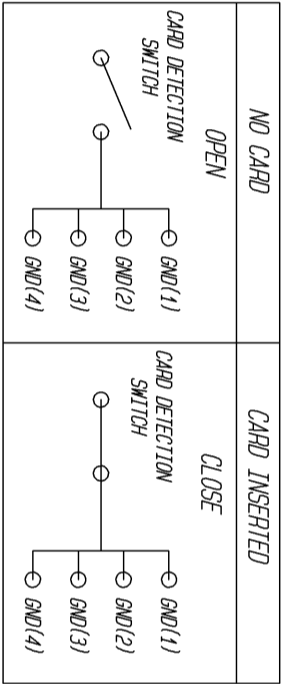
Email & Skype: info@chipsmall.com Web: www.chipsmall.com

Address: A1208, Overseas Decoration Building, #122 Zhenhua RD., Futian, Shenzhen, China

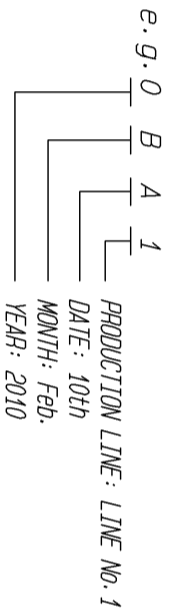




NOTE: ① CO-PLANARITY SHALL BE 0.1mm MAX.  
 ② CARD DETECTION SWITCH



③ Lot. No. SHALL BE INDICATED AS SHOWN.



③ MANUFACTURING DATE

YEAR	MONTH	DATE	YEAR	MONTH	DATE	YEAR	MONTH	DATE	YEAR	MONTH	DATE
2010	0	Jan.	A	1	1	11	B	21	M		
2011	1	Feb.	B	2	2	12	C	22	N		
2012	2	Mar.	C	3	3	13	D	23	P		
2013	3	Apr.	D	4	4	14	E	24	R		
2014	4	May.	E	5	5	15	F	25	S		
2015	5	Jun.	F	6	6	16	G	26	T		
2016	6	Jul.	G	7	7	17	H	27	U		
2017	7	Aug.	H	8	8	18	J	28	V		
2008	8	Sep.	I	9	9	19	K	29	W		
2009	9	Oct.	J	10	10	20	L	30	X		
		Nov.	K								
		Dec.	L								

NO.	UNITS	MATERIAL	FINISH	REMARKS	NO.	MATERIAL	FINISH	REMARKS
3	mm	STAINLESS STEEL			5	PHOSPHOR BRONZE		
2		PHOSPHOR BRONZE			8	PHOSPHOR BRONZE		
1	LCP	BLACK	UL94V-0		4	PHOSPHOR BRONZE		

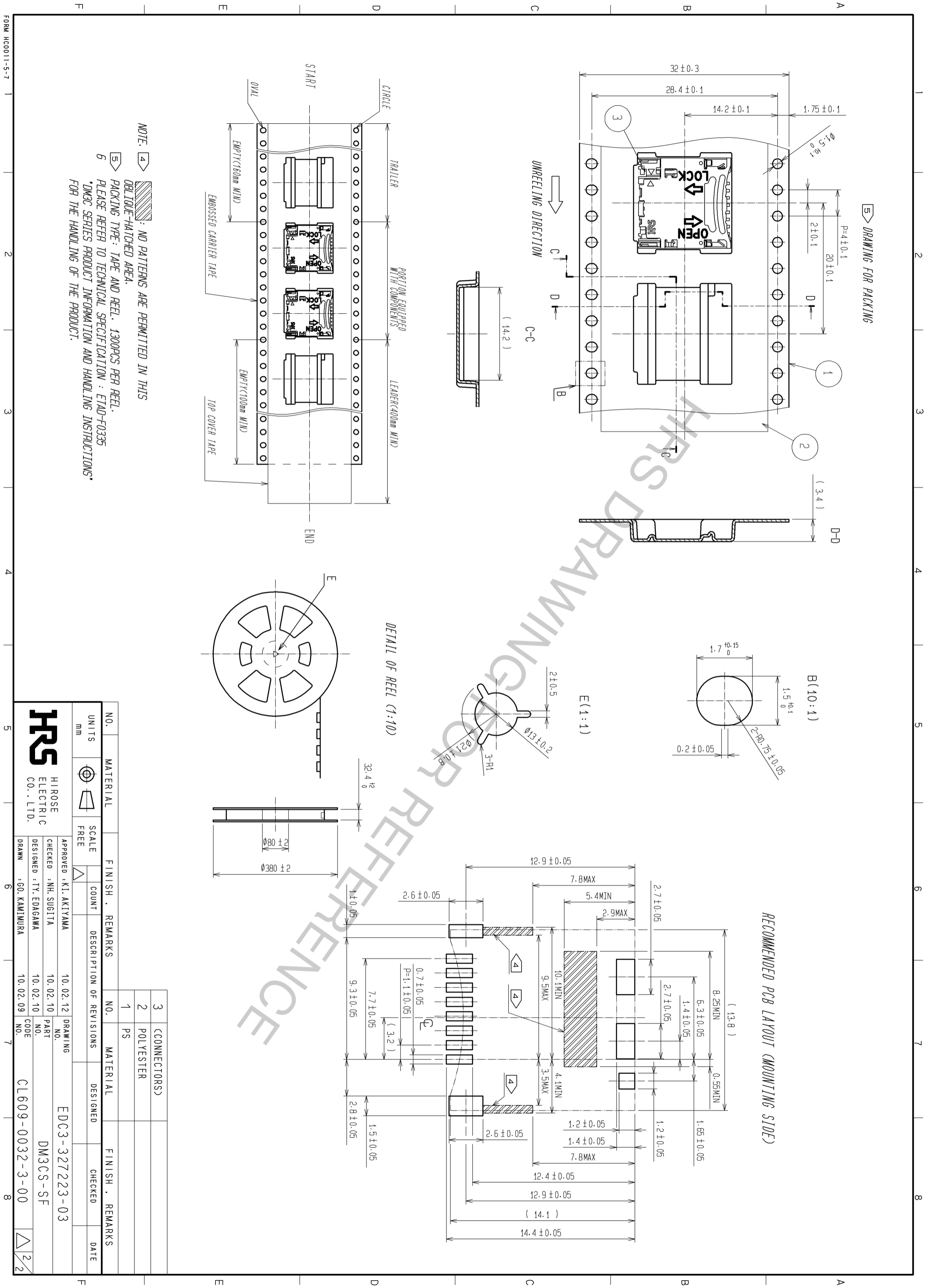
CONTACT AREA N12.2μm+A0.1μm	CONTACT AREA N10.5μm+A0.03μm
MOUNTING AREA N11μm+A0.03μm	MOUNTING AREA N11μm+A0.03μm

**HRS** HIROSE ELECTRIC CO., LTD.

APPROVED: KI. AKITYAMA 10.02.12  
 CHECKED: NH. SUBITA 10.02.10  
 DESIGNED: TY. EDAGAWA 10.02.10  
 DRAWN: GO. KAMIWURA 10.02.09

EDC3-327223-03  
 DM3CS-SF

CL609-0032-3-00



DRAWING FOR PACKING

B (10:1)

E (1:1)

DETAIL OF REEL (1:10)

RECOMMENDED PCB LAYOUT (MOUNTING SIDE)

NOTE:   
 4 : NO PATTERNS ARE PERMITTED IN THIS OBLIQUE-HATCHED AREA.   
 5 PACKING TYPE: TAPE AND REEL. 1300PCS PER REEL.   
 6 PLEASE REFER TO TECHNICAL SPECIFICATION : ETAD-F0335 \*DM3C SERIES PRODUCT INFORMATION AND HANDLING INSTRUCTIONS\* FOR THE HANDLING OF THE PRODUCT.

NO.	UNITS	MATERIAL	SCALE	COUNT	FINISH	REMARKS	NO.	MATERIAL	FINISH	REMARKS
3	mm	CONNECTORS	FREE				1	PS		
2		POLYESTER					2			
1							3			

APPROVED	KI. AKIYAMA	10.02.12	DRAWING	EDC3-327223-03
CHECKED	NH. SUBITA	10.02.10	PART	DM3CS-SF
DESIGNED	TY. EDAGAWA	10.02.10	NO.	
DRAWN	GO. KAMIWURA	10.02.09	NO.	

CL609-0032-3-00	2
-----------------	---