



Chipsmall Limited consists of a professional team with an average of over 10 year of expertise in the distribution of electronic components. Based in Hongkong, we have already established firm and mutual-benefit business relationships with customers from,Europe,America and south Asia,supplying obsolete and hard-to-find components to meet their specific needs.

With the principle of "Quality Parts,Customers Priority,Honest Operation,and Considerate Service",our business mainly focus on the distribution of electronic components. Line cards we deal with include Microchip,ALPS,ROHM,Xilinx,Pulse,ON,Everlight and Freescale. Main products comprise IC,Modules,Potentiometer,IC Socket,Relay,Connector.Our parts cover such applications as commercial,industrial, and automotives areas.

We are looking forward to setting up business relationship with you and hope to provide you with the best service and solution. Let us make a better world for our industry!



Contact us

Tel: +86-755-8981 8866 Fax: +86-755-8427 6832

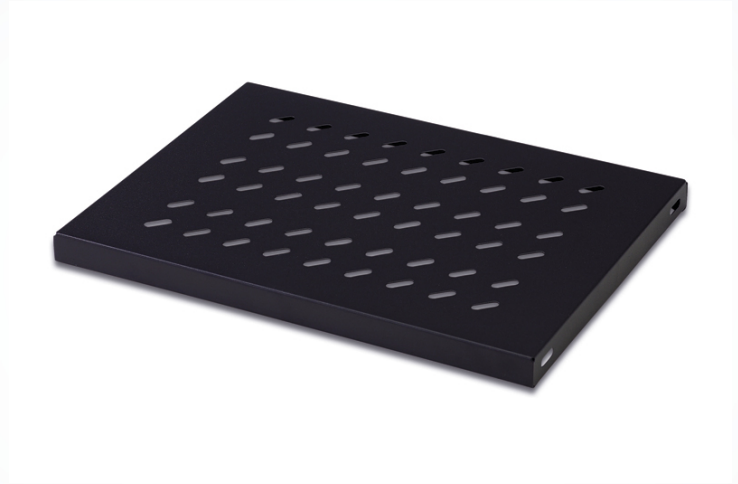
Email & Skype: info@chipsmall.com Web: www.chipsmall.com

Address: A1208, Overseas Decoration Building, #122 Zhenhua RD., Futian, Shenzhen, China



Shelves for DIGITUS network cabinets

DN-19 TRAY-1-600SW
EAN 4016032192954



To store non system components.
Suitable in mounted and unmounted DIGITUS network cabinets as well as DIGITUS relay racks.

Logistical Information

Packaging Unit (pcs)	1
Packet weight (kg)	1.836
Box weight in kg	1.8
Country of origin	Turkey

four fixing points fit at the sites of the rear and front mounting angles
fixed mounted
perforated sheet steel
Black color RAL 9005
load carrying capacity: up to 50kg
requires 1U
complete with fixing material