



Chipsmall Limited consists of a professional team with an average of over 10 year of expertise in the distribution of electronic components. Based in Hongkong, we have already established firm and mutual-benefit business relationships with customers from,Europe,America and south Asia,supplying obsolete and hard-to-find components to meet their specific needs.

With the principle of “Quality Parts,Customers Priority,Honest Operation,and Considerate Service”,our business mainly focus on the distribution of electronic components. Line cards we deal with include Microchip,ALPS,ROHM,Xilinx,Pulse,ON,Everlight and Freescale. Main products comprise IC,Modules,Potentiometer,IC Socket,Relay,Connector.Our parts cover such applications as commercial,industrial, and automotives areas.

We are looking forward to setting up business relationship with you and hope to provide you with the best service and solution. Let us make a better world for our industry!



Contact us

Tel: +86-755-8981 8866 Fax: +86-755-8427 6832

Email & Skype: info@chipsmall.com Web: www.chipsmall.com

Address: A1208, Overseas Decoration Building, #122 Zhenhua RD., Futian, Shenzhen, China



CAT 5e patch panels

- Category 5e, according to EIA/TIA 568 and ISO/IEC 11801
- Suitable for up to 100 MHz
- Housing and screen cover of 1.2 mm sheet steel
- 8P8C RJ45 sockets
- Prepared for 19" installation 1U, 32 and 48 port 2 U
- Cable installation via LSA strips, color-coded as per EIA/TIA 568 A & B
- Screw-type strain relief, metal braid pillows
- Fixing option for cable ties, central grounding



DN-91524U



DN-91524S

Active
Network Components

Passive
Network Components

Fiber Optic
Network Components

Datacom
KVM Switches

USB
and Firewire

Cables
and Adapters

SATA + SCSI
Products

Computer
Accessory Products

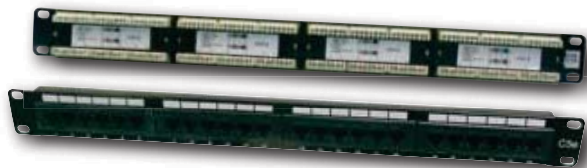
Notebook
Accessory Products

Multimedia
Products

	unshielded	shielded
16-port-1U	DN-91516U 241454	DN-91516S 241515
24-port-1U	DN-91524U 241461	DN-91524S 241522
48-port-2U	DN-91548U 241478	

CAT 6 patch panels

- Category 6, according to performance class, for up to 250 MHz, EIA/TIA 568 & ISO/IEC 11801
- 3P certified, permanent & channel link certified.
- Housing and screen cover of 1.2 mm sheet steel
- 8P8C RJ45 sockets
- Prepared for 19" installation 1U, (32 and 48 port 2 U)
- Cable installation via LSA strips, color-coded as per EIA/TIA 568 A & B
- Screw-type strain relief, metal braid pillows, fixing option for cable ties additional



DN-91624U



DN-91624S

	unshielded	shielded
16-port-1U	DN-91616U 241546	DN-91616S 241607
24-port-1U	DN-91624U 241553	DN-91624S 241614
32-port-2U	DN-91632U 241676	
48-port-2U	DN-91648U 241560	