



Chipsmall Limited consists of a professional team with an average of over 10 year of expertise in the distribution of electronic components. Based in Hongkong, we have already established firm and mutual-benefit business relationships with customers from,Europe,America and south Asia,supplying obsolete and hard-to-find components to meet their specific needs.

With the principle of “Quality Parts,Customers Priority,Honest Operation,and Considerate Service”,our business mainly focus on the distribution of electronic components. Line cards we deal with include Microchip,ALPS,ROHM,Xilinx,Pulse,ON,Everlight and Freescale. Main products comprise IC,Modules,Potentiometer,IC Socket,Relay,Connector.Our parts cover such applications as commercial,industrial, and automotives areas.

We are looking forward to setting up business relationship with you and hope to provide you with the best service and solution. Let us make a better world for our industry!



Contact us

Tel: +86-755-8981 8866 Fax: +86-755-8427 6832

Email & Skype: info@chipsmall.com Web: www.chipsmall.com

Address: A1208, Overseas Decoration Building, #122 Zhenhua RD., Futian, Shenzhen, China

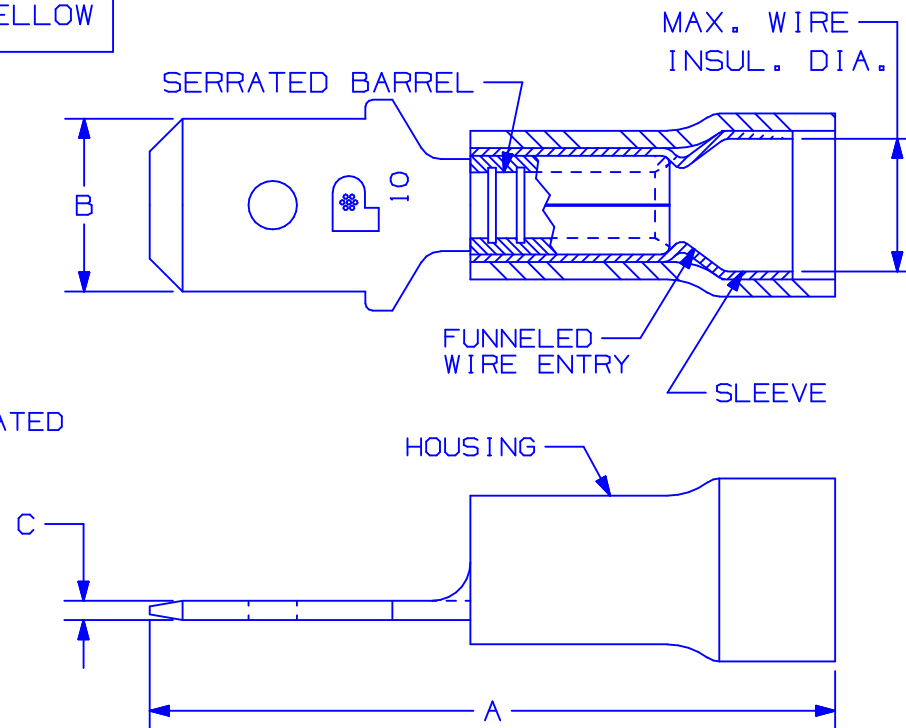


PANDUIT PART NUMBER		WIRE RANGE AWG	MAX. WIRE INSUL. DIA.	DIMENSIONS in.			HOUSING COLOR
PREFIX	PKG			A $\pm .03$	B $\pm .01$	C $\pm .002$	
DNF18-250M	-C -M	22-18	.136 (3,5)	.90 (22,9)	.25 (6,4)	.032 (0,81)	RED
DNF14-250M	-C -M	16-14	.162 (4,1)	.90 (22,9)	.25 (6,4)	.032 (0,81)	BLUE
DNF10-250M*	-L -D	12-10	.230 (5,8)	1.03 (26,2)	.25 (6,4)	.032 (0,81)	YELLOW

*NOT UL LISTED OR CSA CERTIFIED

NOTES:

- CSA CERTIFIED FOR:
 - A. 600V. MAX. VOLTAGE RATING
 - B. 221° F (105° C) MAX. TEMP. RATING
 - C. FOR STRANDED COPPER WIRE ONLY
- MATERIAL:
 - A. STAMPING - .032 (.81) THK COPPER, NICKEL PLATED
 - B. HOUSING - NYLON
 - C. SLEEVE - BRASS, TIN PLATED
- PACKAGE QTY: STD. PKG. -L=50
 -C=100
 BULK PKG. -D=500
 -M=1000
- DIMENSIONS IN BRACKETS ARE IN MILLIMETERS
- INSTALLATION TOOLS:
 - A. CSA CERTIFIED: CT-100, CT-1550, CT-1551
 - B. PANDUIT APPROVED: CT-160, CT-260
- WIRE STRIP LENGTH: $9/32^{+1/32}_0$ (7.1 $^{+0.8}_0$)



CERTIFIED
LR31212

A41322_08

08	11/04	KLFU		ADDED LOGO AND MARKING 10			
07	7/01	JAMB	RLS	ADDED PACKAGING COLUMN TO TABLE	09498	TRO	JAC
06	1/01	RM	SKB	FILESPEC WAS N41322AA_PCD_05	08925	TRO	JCJ
05	10/00	SB	SKB	ADDED DNF10-250M AND REMOVED CT-500 & CT-550 TOOLS	08739	TRO	JCJ
04	3/99	JD	SKB	ADDED CT-1551 & CT-1550 TOOLS	07634	TRO	JCJ
REV	DATE	BY	CHK	DESCRIPTION	ECN #	PM	CUST

PANDUIT

CORP.

TINLEY PARK, ILLINOIS

NYLON INSULATED MALE DISCONNECT
FUNNELED WIRE ENTRY
.250 X .032 (6.35 X 0.81) MALE TAB

DRAWN BY DAW CHK'D RLS SCALE NONE DRAWING NO. A41322