



Chipsmall Limited consists of a professional team with an average of over 10 year of expertise in the distribution of electronic components. Based in Hongkong, we have already established firm and mutual-benefit business relationships with customers from,Europe,America and south Asia,supplying obsolete and hard-to-find components to meet their specific needs.

With the principle of “Quality Parts,Customers Priority,Honest Operation,and Considerate Service”,our business mainly focus on the distribution of electronic components. Line cards we deal with include Microchip,ALPS,ROHM,Xilinx,Pulse,ON,Everlight and Freescale. Main products comprise IC,Modules,Potentiometer,IC Socket,Relay,Connector.Our parts cover such applications as commercial,industrial, and automotives areas.

We are looking forward to setting up business relationship with you and hope to provide you with the best service and solution. Let us make a better world for our industry!



## Contact us

Tel: +86-755-8981 8866 Fax: +86-755-8427 6832

Email & Skype: info@chipsmall.com Web: www.chipsmall.com

Address: A1208, Overseas Decoration Building, #122 Zhenhua RD., Futian, Shenzhen, China



THIS COPY IS PROVIDED ON A RESTRICTED BASIS AND IS NOT TO BE USED IN ANY WAY DETRIMENTAL TO THE INTERESTS OF PANDUIT CORP.

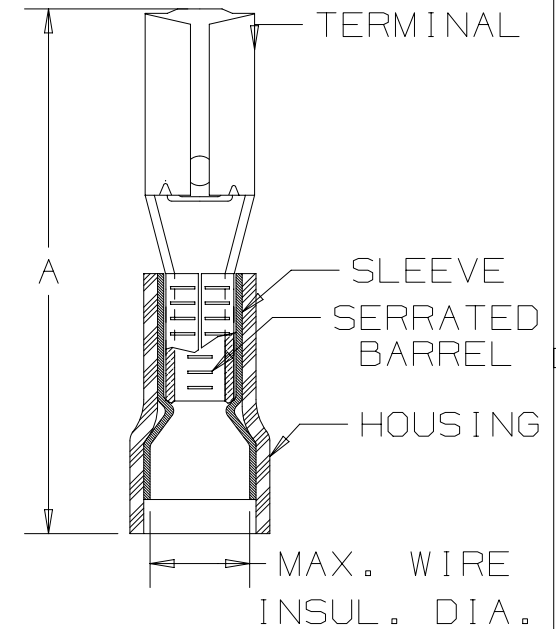
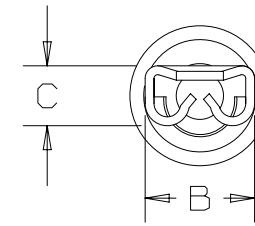
PANDUIT PART #	TAB SIZE	WIRE RANGE AWG / mm <sup>2</sup>	MAX WIRE INSUL. DIA.	DIMENSIONS - in [mm]		
				A ± .03 [0,8]	B ± .01 [0,3]	C ± .01 [0,3]
DNF18-110	.110 X .032 [2,8 X 0,8]	22-18 [0,5-1,0]	.100 [2,54]	.69 [17,5]	.15 [3,8]	.08 [2,0]
DNF18-111	.110 X .020 [2,8 X 0,5]	22-18 [0,5-1,0]	.100 [2,54]	.69 [17,5]	.15 [3,8]	.07 [1,8]

UL & CSA TOOLS (DIES)
CT-520
CT-1525 (A POCKET)
CT-2500 (CT-2525CH: A PKT)

PANDUIT APPROVED TOOLS
CT-100A
CT-600-A

NOTES:

- UL LISTED AND CSA CERTIFIED FOR:
  - #22-18 AWG STRANDED COPPER WIRE ONLY
  - 194°F [90°C] MAX. OPERATING TEMPERATURE
  - 300V MAX VOLTAGE RATING
- MATERIAL:
  - STAMPING: .010" [0,25mm] THK BRASS, TIN PLATED
  - HOUSING: NYLON, RED
  - SLEEVE: BRASS, TIN PLATED
- SEE [www.panduit.com](http://www.panduit.com) FOR PACKAGE QUANTITIES
- INSERTION/WITHDRAWAL FORCES:
  - 1ST INSERTION MAX: 12 lbs. [53 N]
  - 1ST WITHDRAWAL MAX: 14 lbs. [62 N]
  - 1ST WITHDRAWAL MIN: 2 lbs. [9 N]
- DIMENSIONS IN BRACKETS ARE METRIC EQUIVALENT
- WIRE STRIP LENGTH: 9/32" <sup>+1/32</sup><sub>-0</sub> [7,1mm <sup>+0,8</sup><sub>-0</sub>]



LISTED  
20H3  
E78522



CERTIFIED  
LR31212

TITLE	
<b>#22-18 BARREL NYLON INSULATED FEMALE DISCONNECT, FUNNEL WIRE ENTRY</b>	
CUSTOMER DRAWING	
ITEM REVISION NAME	N41308BA/08
DATASET FILE NAME	N41308BA/08
UNLESS OTHERWISE SPECIFIED, DIMENSIONAL TOLERANCES ARE: IN [mm]	
.x ± .1 [2.54]	.xxx ± .005 [.127]
.xx ± .01 [.25]	ANGLES ± 5 °
THIRD ANGLE PROJECTION	
DRAWN BY	DATE
DAW	1/92
CHK	SCALE
	NONE
MATERIAL:	
SEE NOTES	
DRAWING NUMBER:	
A41308	
REV	DATE
BY	CHK
APR	DESCRIPTION
ECN	
DAW	1/92
CHK	SCALE
	NONE
SHT 1 OF 1	
A	

REV	DATE	BY	CHK	APR	DESCRIPTION	ECN
08	5/17	JHNU	TMR	RGB	ADDED A POCKET TO CT-1525, CT-2500, REVISED FORMAT, I/W FORCES	A41308
07	8/11	SHOR	LCA	LCA	ADDED INSTALLATION TOOLS	
06	7/11	SB	LCA	LCA	ADDED NOTE REGARDING PACKAGING QUANTITIES	
05	7/03	KLFU	LCA	LCA	UPDATED DRAWING	

**PANDUIT**

MATERIAL:  
SEE NOTES  
DRAWING NUMBER:  
A41308

D10100DA/20