



Chipsmall Limited consists of a professional team with an average of over 10 year of expertise in the distribution of electronic components. Based in Hongkong, we have already established firm and mutual-benefit business relationships with customers from,Europe,America and south Asia,supplying obsolete and hard-to-find components to meet their specific needs.

With the principle of “Quality Parts,Customers Priority,Honest Operation,and Considerate Service”,our business mainly focus on the distribution of electronic components. Line cards we deal with include Microchip,ALPS,ROHM,Xilinx,Pulse,ON,Everlight and Freescale. Main products comprise IC,Modules,Potentiometer,IC Socket,Relay,Connector.Our parts cover such applications as commercial,industrial, and automotives areas.

We are looking forward to setting up business relationship with you and hope to provide you with the best service and solution. Let us make a better world for our industry!



## Contact us

Tel: +86-755-8981 8866 Fax: +86-755-8427 6832

Email & Skype: info@chipsmall.com Web: www.chipsmall.com

Address: A1208, Overseas Decoration Building, #122 Zhenhua RD., Futian, Shenzhen, China



THIS COPY IS PROVIDED ON A RESTRICTED BASIS AND IS NOT TO BE USED IN ANY WAY DETRIMENTAL TO THE INTERESTS OF PANDUIT CORP.

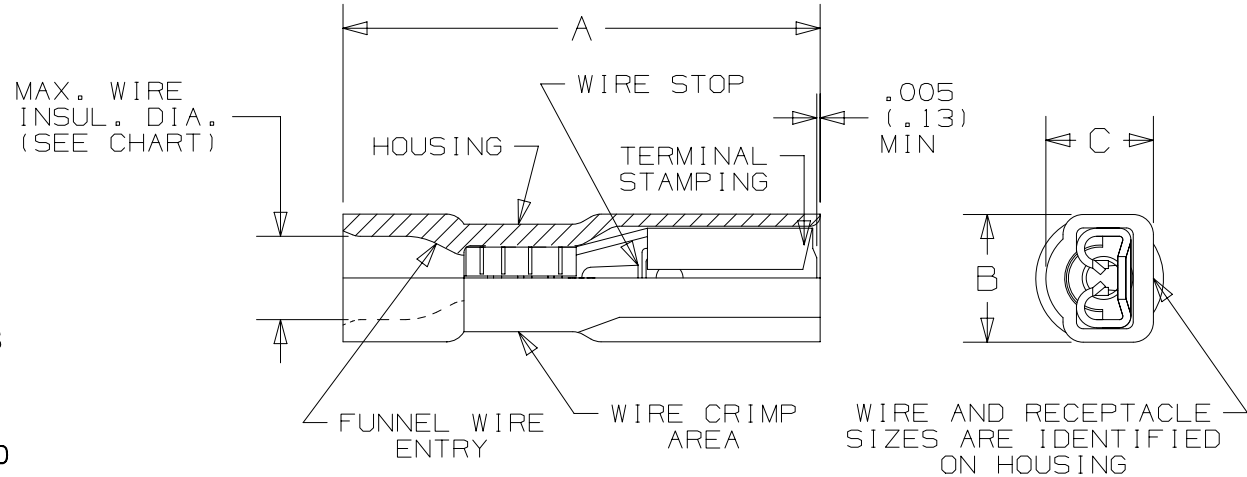
PANDUIT PART NUMBER	TAB SIZE in. [mm]	WIRE RANGE AWG [mm <sup>2</sup> ]	MAX. WIRE INSUL. DIA. in. [mm]	DIMENSIONS in. [mm]		
				A ± .03 [0,8]	B ± .015 [0,4]	C ± .015 [0,4]
DNF18-110FIB	.110 X .032 [2,8 X 0,8]	22-18 [0,38-1,0]	.12 [3,0]	.71 [18,0]	.19 [4,8]	.16 [4,1]
DNF18-111FIB	.110 X .020 [2,8 X 0,5]	22-18 [0,38-1,0]	.12 [3,0]	.71 [18,0]	.19 [4,8]	.16 [4,1]

UL & CSA TOOLS
CT-520 CT-1525 (A POCKET)

PANDUIT APPROVED TOOLS
CT-100A (A POCKET)

**NOTES:**

- UL LISTED AND CSA CERTIFIED FOR:
  - A. 600V MAX VOLTAGE RATING
  - B. 257°F (125°C) MAX TEMP RATING UL  
221°F (105°C) MAX TEMP RATING CSA
  - C. STRANDED COPPER WIRE ONLY
- INSERTION/WITHDRAWAL FORCES:
  - A. 1ST INSERTION MAX: 12 lbs.
  - B. 1ST WITHDRAWAL MAX: 14 lbs.
  - C. 1ST WITHDRAWAL MIN: 2 lbs.
- SEE [www.panduit.com](http://www.panduit.com) FOR PACKAGE QUANTITIES
- MATERIAL:
  - A. STAMPING: TIN PLATED BRASS
  - B. HOUSING: TYPE 6/6 NYLON, TRANSLUCENT RED
- DIMENSIONS IN BRACKETS ARE mm OR mm<sup>2</sup>
- WIRE STRIP LENGTH: 9/32" <sup>+1/32</sup><sub>-0</sub> [7,1 mm <sup>+0,8</sup><sub>-0</sub>]



LISTED  
20H3  
E78522



CERTIFIED  
LR31212

TITLE	
<b>LOOSE PIECE, NYLON, FULLY INSULATED FEMALE DISCONNECTS, .110 X .032, .110 X .020 TAB</b>	
CONTROL DRAWING	
ITEM REVISION NAME	N41544BA/06
DATASET FILE NAME	N41544BA/06
UNLESS OTHERWISE SPECIFIED, DIMENSIONAL TOLERANCES ARE: IN [mm]	MATERIAL:  <b>SEE NOTES</b>
.x ± .1 [2.54]      .xxx ± .005 [0.127] .xx ± .01 [0.25]      ANGLES ± 5°	
THIRD ANGLE PROJECTION	DRAWING NUMBER: A41544
DRAWN BY BDK	DATE 5/92
CHK RLS	SCALE NONE
SHT 1 OF 1	
A	

REV	DATE	BY	CHK	APR	DESCRIPTION	ECN
06	11/16	JHNU	TMR	RGB	INSERTION WITHDRAWAL FORCES UPDATED, WAS 6-12 lbs	A41544
05	12/15	TMR	TMR	RGB	UPDATED CT-100A AND ADDED A PKT NOTE, REVISED TITLE BLOCK	N41544BB-A41544
04	2/07	DAW	DAW	LCA	ADDED POCKET "A" NOTE TO CT-1525	TR00220
03	7/03	KLFU	SKB	SKB	UPDATED DRAWING	12453
02	5/98	TM	JW	LA	ADDED CT-1525 TO TOOL NOTES	06872
01	10/94	TH	RLS	LA	UPDATED NOTES AND DIMENSIONS	02550

D10100DA/16