



Chipsmall Limited consists of a professional team with an average of over 10 year of expertise in the distribution of electronic components. Based in Hongkong, we have already established firm and mutual-benefit business relationships with customers from,Europe,America and south Asia,supplying obsolete and hard-to-find components to meet their specific needs.

With the principle of "Quality Parts,Customers Priority,Honest Operation,and Considerate Service",our business mainly focus on the distribution of electronic components. Line cards we deal with include Microchip,ALPS,ROHM,Xilinx,Pulse,ON,Everlight and Freescale. Main products comprise IC,Modules,Potentiometer,IC Socket,Relay,Connector.Our parts cover such applications as commercial,industrial, and automotives areas.

We are looking forward to setting up business relationship with you and hope to provide you with the best service and solution. Let us make a better world for our industry!



Contact us

Tel: +86-755-8981 8866 Fax: +86-755-8427 6832

Email & Skype: info@chipsmall.com Web: www.chipsmall.com

Address: A1208, Overseas Decoration Building, #122 Zhenhua RD., Futian, Shenzhen, China



| PART NUMBER | | TAB SIZE | AWG WIRE RANGE (mm ²) | HOUSING COLOR | MAX WIRE INSUL DIA | DIMENSIONS in. | | | |
|-------------|----------|--|-----------------------------------|---------------|--------------------|----------------|--------------|--------------|---------------|
| PREFIX | PK | | | | | A±.03 (,8) | B±.02 (,5) | W±.01 (,3) | X±.03 (,8) |
| DNFR18-250B | -L -M | .250 X .032 (6,3 X 0,8) | 22-18 (0,5-1,0) | RED | .130 (3,30) | .78 (19,8) | .20 (5,1) | .36 (9,1) | .62 (15,7) |
| DNFR14-250B | -L -M | .250 X .032 (6,3 X 0,8) | 16-14 (1,5-2,5) | BLUE | .155 (3,94) | .78 (19,8) | .20 (5,1) | .36 (9,1) | .63 (16,0) |
| DNFR18-205B | -L -M | .205 X .032 (5,2 X 0,8) OR .187 X .032 (4,8 X 0,8) | 22-18 (0,5-1,0) | RED | .130 (3,30) | .78 (19,8) | .20 (5,1) | .36 (9,1) | .62 (15,7) |
| DNFR14-205B | -L -M | .205 X .032 (5,2 X 0,8) OR .187 X .032 (4,8 X 0,8) | 16-14 (1,5-2,5) | BLUE | .155 (3,94) | .78 (19,8) | .20 (5,1) | .36 (9,1) | .63 (16,0) |
| DNFR18-206B | -L -M | .205 X .020 (5,2 X 0,5) OR .187 X .020 (4,8 X 0,5) | 22-18 (0,5-1,0) | RED | .130 (3,30) | .78 (19,8) | .20 (5,1) | .36 (9,1) | .62 (15,7) |
| DNFR14-206B | -L -M | .205 X .020 (5,2 X 0,5) OR .187 X .020 (4,8 X 0,5) | 16-14 (1,5-2,5) | BLUE | .155 (3,94) | .78 (19,8) | .20 (5,1) | .36 (9,1) | .63 (16,0) |



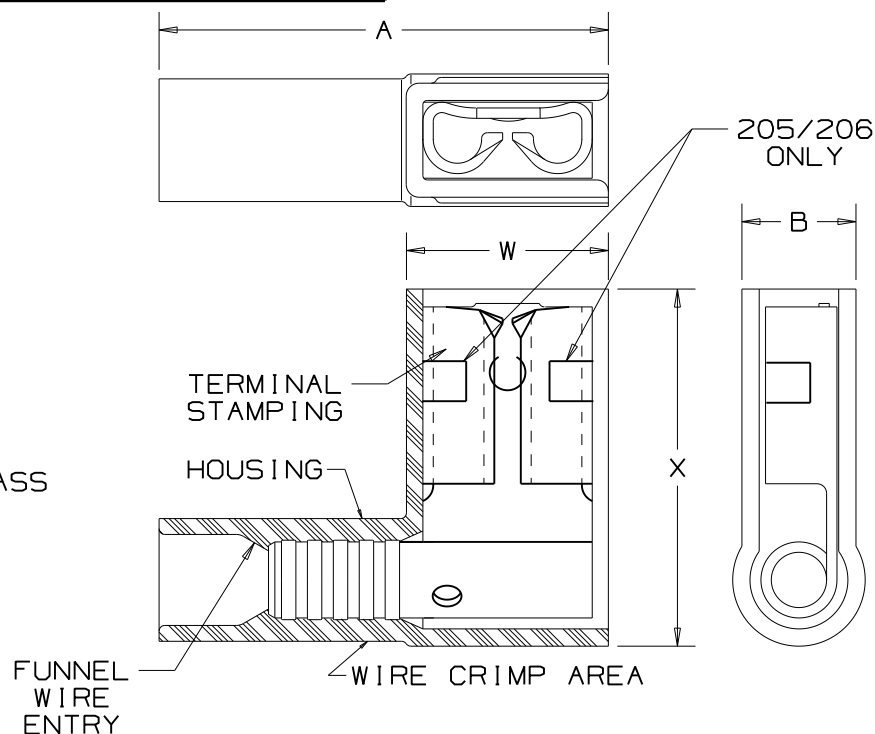
LISTED
20H3
E78522



CERTIFIED
LR31212

NOTES:

- USED FOR:
 - 600V MAX VOLTAGE RATING
 - 221°F (105°C) MAX INSULATION TEMP. RATING
 - STRANDED COPPER WIRE ONLY
- FIRST INSERTION FORCE - 12 LB. (53N) MAX
FIRST WITHDRAWAL FORCE - 12 LB. (53N) MAX
6 LB. (27N) MIN
- INSTALLATION TOOLS:
A. CT-1525
- WIRE STRIP LENGTH: 9/32 ^{+1/32} ₀ (7.1 ^{+0.8} ₀)
- MATERIAL USED:
A. TERMINAL STAMPING: .018 (.46) (THK) TIN PLATED BRASS
B. HOUSING : NYLON
- PACKAGING QTY:
A. STD : -L = 50
B. BULK: -M = 1000
- DIMENSIONS IN BRACKETS ARE IN MILLIMETERS OR mm²



PANDUIT

CORP.

TINLEY PARK, ILLINOIS

MOLDED NYLON INSULATED RIGHT ANGLE
FEMALE DISCONNECTS, BUTTED SEAM

| | | | |
|-----|------|-----|---|
| 07 | 1/11 | SRB | CHANGED PACKAGING CODE FROM C=100 TO L=50 |
| REV | DATE | BY | DESCRIPTION |

| | | | |
|-----------------|--------------|---------------|-----------------------|
| DRAWN BY DAW | CHK'D RLS | SCALE NONE | DRAWING NO. A41329 |
|-----------------|--------------|---------------|-----------------------|