



Chipsmall Limited consists of a professional team with an average of over 10 year of expertise in the distribution of electronic components. Based in Hongkong, we have already established firm and mutual-benefit business relationships with customers from,Europe,America and south Asia,supplying obsolete and hard-to-find components to meet their specific needs.

With the principle of “Quality Parts,Customers Priority,Honest Operation,and Considerate Service”,our business mainly focus on the distribution of electronic components. Line cards we deal with include Microchip,ALPS,ROHM,Xilinx,Pulse,ON,Everlight and Freescale. Main products comprise IC,Modules,Potentiometer,IC Socket,Relay,Connector.Our parts cover such applications as commercial,industrial, and automotives areas.

We are looking forward to setting up business relationship with you and hope to provide you with the best service and solution. Let us make a better world for our industry!



## Contact us

Tel: +86-755-8981 8866 Fax: +86-755-8427 6832

Email & Skype: info@chipsmall.com Web: www.chipsmall.com

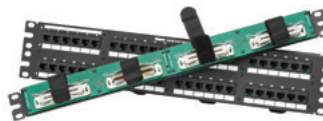
Address: A1208, Overseas Decoration Building, #122 Zhenhua RD., Futian, Shenzhen, China



# Data-Patch™ Category 5e RJ21 to RJ45 Patch Panels

## specifications

Category 5e RJ21 to RJ45 patch panels shall feature 24 or 48 RJ45 ports on the front of the panel with four or eight RJ21 connectors on the back of the panel. Each RJ45 connector shall be fully wired to all eight pins and support 10/100/1000 Gigabit Ethernet performance. RJ21 connectors shall be wired per industry standards for backwards compatibility. Patch panels shall mount to standard EIA 19" or 23" racks and be available in flat or angled versions. Patch panels shall not require the use of a punchdown tool.



## technical information

<b>Category 5e/ Class D channel performance:</b>	Exceeds all ANSI/TIA-C.2 Category 5e and ISO 11801 Class D channel standard requirements
<b>Mounting option:</b>	Mounts to standard 19" or 23" racks (23" rack requires use of extender bracket)
<b>Packaging:</b>	Packaged with M6 and #12-24 mounting screws

## key features and benefits

<b>RJ45 connector</b>	All eight pins are utilized to support up to and including Gigabit Ethernet
<b>RJ21 connector</b>	Bridges RJ21 connectivity to RJ45 connectivity providing increased design flexibility and reduced installation costs
<b>Secure connector</b>	Accommodates 110° male cable assemblies on back of patch panel for greater system flexibility; screw connectors and Tak-Ty® Hook & Loop Cable Ties provide additional security
<b>Optional angled patch panel design</b>	Facilitates proper bend radius of each cable as it is routed panel design directly into a vertical cable manager; minimizes need for horizontal cable managers for improved rack density
<b>Port and panel identification</b>	Write-on areas follow TIA/EIA-606-B labeling standards; optional label kits available

## applications

Data-Patch™ RJ21 to RJ45 Patch Panels utilize all eight pins of each RJ45 connector, providing support up to and including Gigabit Ethernet performance. The Data-Patch™ RJ21 to RJ45 Patch Panels are suitable for deployment to the zone or high performance workstations. The angled

patch panels manage high density network applications in half the vertical space of conventional cable management systems. Data-Patch™ RJ21 to RJ45 Patch Panels complement the Panduit cable management system for overall organized and efficient cabling and greater network reliability.

### Data-Patch™ RJ21 to RJ45 Angled Patch Panels

<b>24-port, 1 RU:</b>	DPA245E88TV25
<b>48-port, 2 RU:</b>	DPA485E88TV25

### Data-Patch™ RJ21 to RJ45 Flat Patch Panels

<b>24-port, 1 RU:</b>	DP245E88TV25
<b>48-port, 2 RU:</b>	DP485E88TV25

### 10/100/1000BASE-T Cable Assemblies – RJ21 Plug to RJ21 Plug

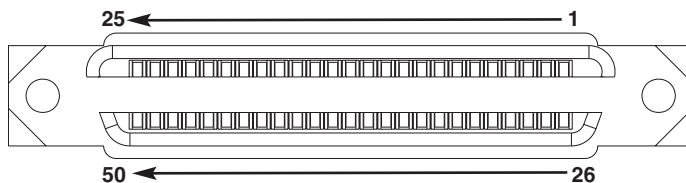
<b>Straight, 110° right orientation:</b>	UTPCH*SR25Y
<b>Straight, 110° left orientation:</b>	UTPCH*SL25Y
<b>Both, 110° left orientation:</b>	UTPCH*L25Y
<b>Both, 110° right orientation:</b>	UTPCH*R25Y
<b>110° left 110° right orientation:</b>	UTPCH*LR25Y

### Accessories

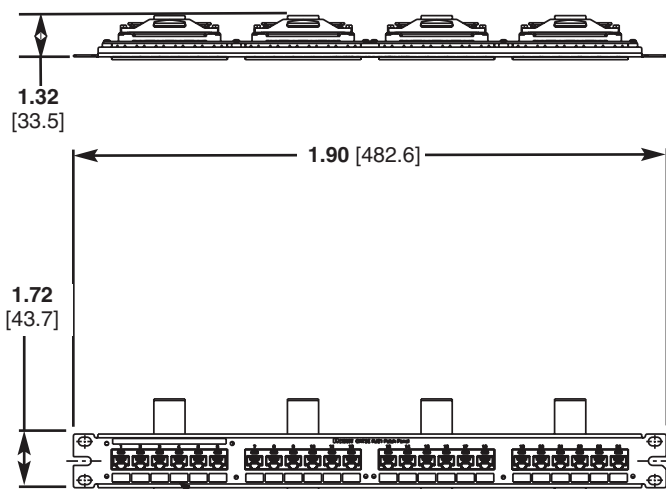
<b>One rack space extender bracket:</b>	PEB1
<b>Two rack space extender bracket:</b>	PEB2
<b>24-port label kit:</b>	DPLK24
<b>48-port label kit:</b>	DPLK48

# Data-Patch™ Category 5e RJ21 to RJ45 Patch Panels

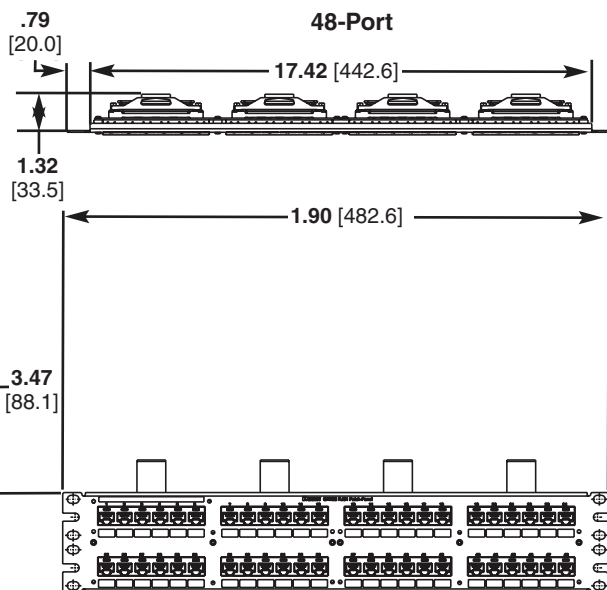
## 50-Pin Female Connector



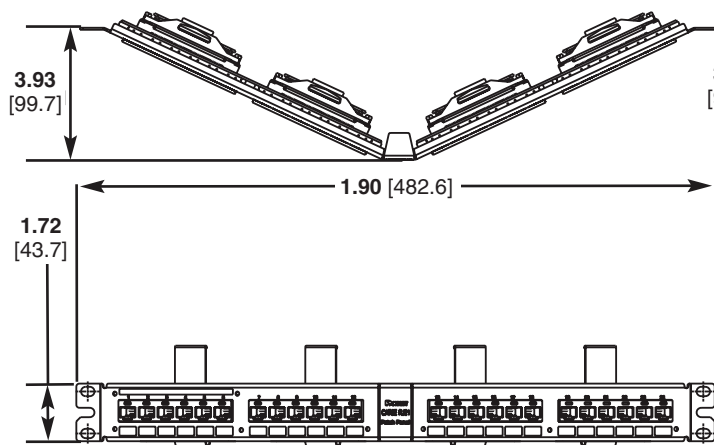
## 24-Port



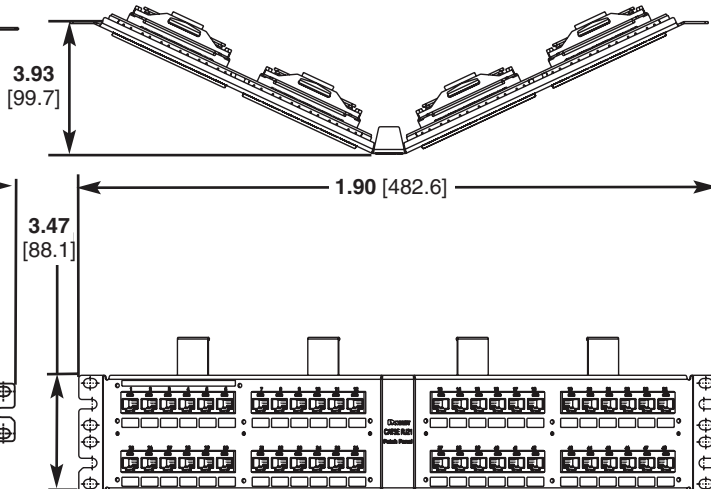
## 48-Port



## 24-Port Angled



## 48-Port Angled



Dimensions are in inches (Dimensions in parenthesis are metric)

## WORLDWIDE SUBSIDIARIES AND SALES OFFICES

PANDUIT CANADA  
Markham, Ontario  
cs-cdn@panduit.com  
Phone: 800.777.3300

PANDUIT EUROPE LTD.  
London, UK  
cs-emea@panduit.com  
Phone: 44.20.8601.7200

PANDUIT SINGAPORE PTE. LTD.  
Republic of Singapore  
cs-ap@panduit.com  
Phone: 65.6305.7575

PANDUIT JAPAN  
Tokyo, Japan  
cs-japan@panduit.com  
Phone: 81.3.6863.6000

PANDUIT LATIN AMERICA  
Guadalajara, Mexico  
cs-la@panduit.com  
Phone: 52.33.3777.6000

PANDUIT AUSTRALIA PTY. LTD.  
Victoria, Australia  
cs-aus@panduit.com  
Phone: 61.3.9794.9020

For a copy of Panduit product warranties, log on to [www.panduit.com/warranty](http://www.panduit.com/warranty)

For more information

Visit us at [www.panduit.com](http://www.panduit.com)

Contact Customer Service by email: [cs@panduit.com](mailto:cs@panduit.com)  
or by phone: 800.777.3300

**PANDUIT**®

©2015 Panduit Corp.  
ALL RIGHTS RESERVED.  
COSP352-WW-ENG  
Replaces WW-COSP129  
1/2015