



Chipsmall Limited consists of a professional team with an average of over 10 year of expertise in the distribution of electronic components. Based in Hongkong, we have already established firm and mutual-benefit business relationships with customers from,Europe,America and south Asia,supplying obsolete and hard-to-find components to meet their specific needs.

With the principle of “Quality Parts,Customers Priority,Honest Operation,and Considerate Service”,our business mainly focus on the distribution of electronic components. Line cards we deal with include Microchip,ALPS,ROHM,Xilinx,Pulse,ON,Everlight and Freescale. Main products comprise IC,Modules,Potentiometer,IC Socket,Relay,Connector.Our parts cover such applications as commercial,industrial, and automotives areas.

We are looking forward to setting up business relationship with you and hope to provide you with the best service and solution. Let us make a better world for our industry!



## Contact us

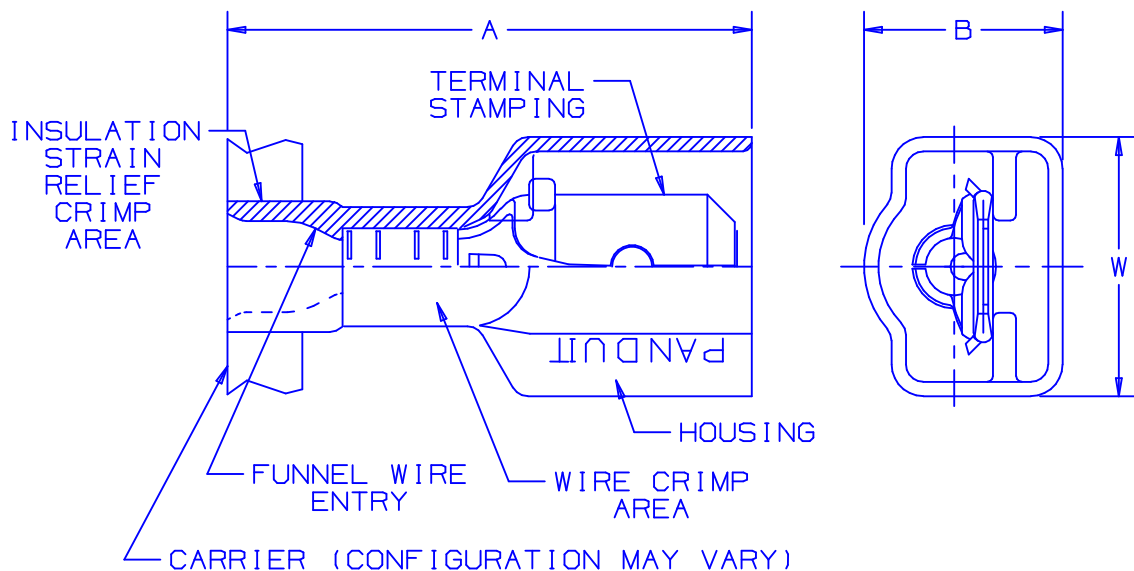
Tel: +86-755-8981 8866 Fax: +86-755-8427 6832

Email & Skype: info@chipsmall.com Web: www.chipsmall.com

Address: A1208, Overseas Decoration Building, #122 Zhenhua RD., Futian, Shenzhen, China

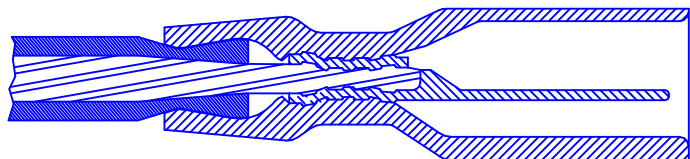


THIS COPY IS PROVIDED ON A RESTRICTED BASIS AND IS NOT TO BE USED IN ANY WAY DETRIMENTAL TO THE INTERESTS OF PANDUIT CORP.



NOTES:

- USED FOR:
  - A. 600V MAX VOLTAGE RATING
  - B. 221°F (105°C) MAX TEMP RATING
  - C. STRANDED COPPER WIRE ONLY
- WIRE STRIP LENGTH:  $9/32^{+1/32}_{-0}$  (7.1  $^{+0.8}_{-0}$ )
- MATERIAL:
  - A. STAMPING: NICKEL PLATED BRASS
  - B. HOUSING: PREMIUM GRADE NYLON FOR SUPERIOR STRAIN RELIEF INSULATION CRIMPING
- PACKAGING: -2K = 2000 PCS CONTINUOUS MOLDED STRIP CARRIER
- DIMENSIONS IN BRACKETS ARE IN MILLIMETERS OR mm<sup>2</sup>



SECTION VIEW OF CRIMPED DISCONNECT

| TOOL CHART<br>RECOMMENDED<br>PRESSES |                      |  |
|--------------------------------------|----------------------|--|
| CP-861, CP-860<br>CP-851, CP-862     |                      |  |
| CA-800/CA9<br>APPLICATOR DIE INSERTS |                      |  |
| CD-800-10<br>CD9-10B                 | CD-800-11<br>CD9-11B |  |

| PART NUMBER  |     | TAB SIZE                   | WIRE RANGE AWG (mm <sup>2</sup> ) | COLOR | MAX WIRE INSULATION DIAMETER | MIN WIRE INSULATION DIAMETER | DIMENSIONS in       |                     |                     |
|--------------|-----|----------------------------|-----------------------------------|-------|------------------------------|------------------------------|---------------------|---------------------|---------------------|
| PREFIX       | PK  |                            |                                   |       |                              |                              | A $^{+.03}_{-1.81}$ | B $^{+.02}_{-1.51}$ | W $^{+.02}_{-1.51}$ |
| DPF18-250FIM | -2K | .250 X .032<br>(6.3 X 0.8) | 22-18<br>(0.5-1.5)                | RED   | .133<br>(3.38)               | .060<br>(1.52)               | .90<br>(22.9)       | .29<br>(7.4)        | .41<br>(10.4)       |
| DPF14-250FIM | -2K | .250 X .032<br>(6.3 X 0.8) | 16-14<br>(1.5-2.5)                | BLUE  | .156<br>(3.96)               | .090<br>(2.29)               | .90<br>(22.9)       | .29<br>(7.4)        | .41<br>(10.4)       |



A41514\_05

|     |       |      |     |  |       |    |     |     |      |     |
|-----|-------|------|-----|--|-------|----|-----|-----|------|-----|
| 05  | 7/03  | KLFU |     | ADDED INTERNAL SERRATIONS<br>ADDED CA9 TO TOOL CHART |       |    |     |     |      |     |
| 04  | 1/01  | RM   | SKB | FILESPEC WAS N41514AA_PCD_03                         | 8933  |    | CCH | JAC |      |     |
| 03  | 10/98 | JD   |     | MATERIAL WAS TIN PLATED<br>ADDED CP-862, CA9         | 07845 |    |     |     |      |     |
| 02  | 10/96 | TM   | RS  | UPDATED NOTES AND DIMENSIONS                         | 05134 |    | DH  | LA  |      |     |
| REV | DATE  | BY   | CHK | DESCRIPTION  | ECN   | QA | PM  | SUP | CUST | APP |



REELSMART™ DISCOGRIP™  
PREMIUM NYLON FULLY INSULATED  
MALE DISCONNECT .250 X .032

|          |       |       |            |
|----------|-------|-------|------------|
| DRAWN BY | CHK'D | SCALE | DRAWING NO |
| KC       |       |       | A41514     |