



Chipsmall Limited consists of a professional team with an average of over 10 year of expertise in the distribution of electronic components. Based in Hongkong, we have already established firm and mutual-benefit business relationships with customers from,Europe,America and south Asia,supplying obsolete and hard-to-find components to meet their specific needs.

With the principle of “Quality Parts,Customers Priority,Honest Operation,and Considerate Service”,our business mainly focus on the distribution of electronic components. Line cards we deal with include Microchip,ALPS,ROHM,Xilinx,Pulse,ON,Everlight and Freescale. Main products comprise IC,Modules,Potentiometer,IC Socket,Relay,Connector.Our parts cover such applications as commercial,industrial, and automotives areas.

We are looking forward to setting up business relationship with you and hope to provide you with the best service and solution. Let us make a better world for our industry!



## Contact us

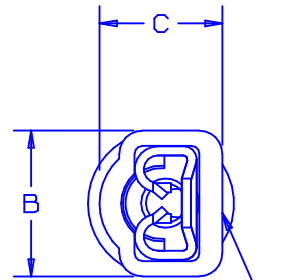
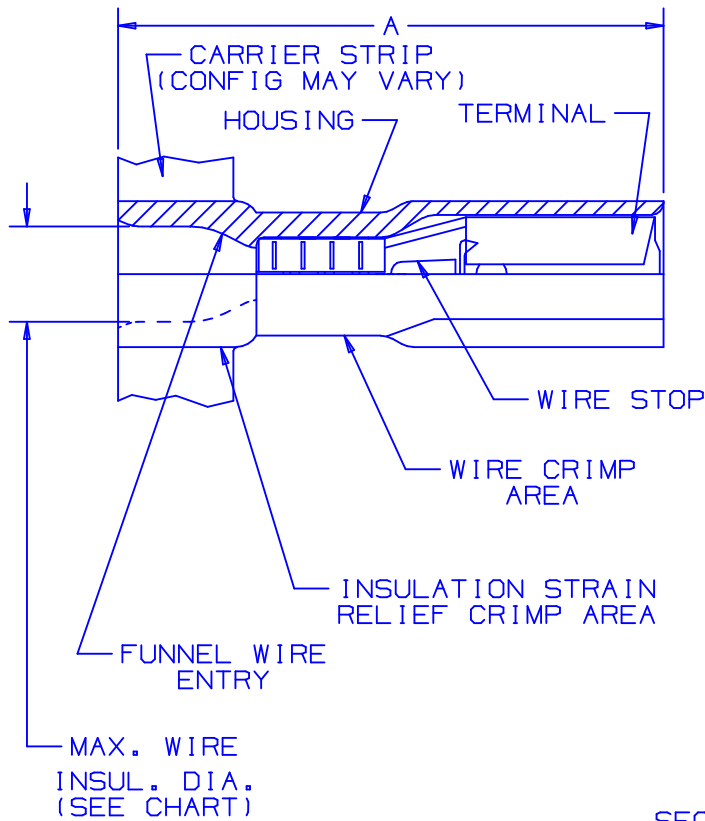
Tel: +86-755-8981 8866 Fax: +86-755-8427 6832

Email & Skype: info@chipsmall.com Web: www.chipsmall.com

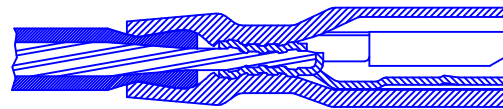
Address: A1208, Overseas Decoration Building, #122 Zhenhua RD., Futian, Shenzhen, China



THIS COPY IS PROVIDED ON A RESTRICTED BASIS AND IS NOT TO BE USED IN ANY WAY DETRIMENTAL TO THE INTERESTS OF PANDUIT CORP.



WIRE AND RECEPTACLE SIZES ARE IDENTIFIED ON HOUSING



SECTION VIEW OF CRIMPED DISCONNECT

NOTES:

1. MEETS OR EXCEEDS UL REQUIREMENTS FOR:
  - A. 600V MAX VOLTAGE RATING
  - B. 221°F (105°C) MAX TEMP RATING
  - C. STRANDED COPPER WIRE ONLY
  - D. 6-12 LBS INITIAL INSERTION/WITHDRAWAL FORCE
2. PACKAGE QTY: 3K=3000 PIECES, 2K=2000 PIECES  
CONTINUOUS MOLDED STRIP CARRIER
3. MATERIAL:
  - A. STAMPING-CDA 260 BRASS, TIN PLATED
  - B. HOUSING-PREMIUM GRADE NYLON FOR SUPERIOR STRAIN RELIEF INSULATION CRIMPING
4. DIMENSIONS IN BRACKETS ARE IN mm OR mm<sup>2</sup>
5. NYLON HOUSING IS OPAQUE
6. WIRE STRIP LENGTH  $7/32^{+1/32}_{-0}$  (5.6<sup>+0.8</sup><sub>-0</sub>)



TOOL CHART  
RECOMMENDED PRESSES: CP-861 & CP-862

CA-9  
CA-800 APPLICATOR  
DIE INSERTS

CD-800-12  
CD9-12A

PART NUMBER	TAB SIZE	WIRE RANGE AWG (MM <sup>2</sup> )	COLOR (note 5)	MAX. INSUL. DIA.	MIN. INSUL. DIA.	DIMENSIONS in.		
						A ±.03	B ±.01	C ±.02
DPF18-110FIB-3K	.110 X .032 (2,8 X 0,8)	22-18 (0,5-1,0)	RED	.132 (3,35)	.050 (1,27)	.71 (18,0)	.19 (4,83)	.17 (4,32)
DPF18-111FIB-3K	.110 X .020 (2,8 X 0,5)	22-18 (0,5-1,0)	RED	.132 (3,35)	.050 (1,27)	.71 (18,0)	.19 (4,83)	.17 (4,32)

REV	DATE	BY	CHK	DESCRIPTION	ECN #	CUST	PM
06	7/03	KLFU		UPDATED DRAWING; ADD CP-862, CA9, CD9-12A TO TOOL CHART, WIRE RANGE WAS 0,5-1,5			
05	1/01	RM	SKB	FILESPEC WAS N41417AA_PCD_04	8925	JAC	CCH
04	10/96	T SMA		UPDATED NOTES AND DIMENSIONS	05144		
03	12/94	TH	RLS	UPDATED DIMENSIONS	02807	LA	TKE
02	7/90	RH		ADDED CSA CERTIFICATION LOGO	00049		

A41417\_06



CORP.

TINLEY PARK, ILLINOIS

DISCOGRIP™  
FULLY INSULATED FEMALE DISCONNECTS  
Ⓐ .110 X .032, .110 X .020

DRAWN BY RPH	CHK'D	SCALE NONE	DRAWING NO. A41417
-----------------	-------	---------------	-----------------------