



Chipsmall Limited consists of a professional team with an average of over 10 year of expertise in the distribution of electronic components. Based in Hongkong, we have already established firm and mutual-benefit business relationships with customers from,Europe,America and south Asia,supplying obsolete and hard-to-find components to meet their specific needs.

With the principle of “Quality Parts,Customers Priority,Honest Operation,and Considerate Service”,our business mainly focus on the distribution of electronic components. Line cards we deal with include Microchip,ALPS,ROHM,Xilinx,Pulse,ON,Everlight and Freescale. Main products comprise IC,Modules,Potentiometer,IC Socket,Relay,Connector.Our parts cover such applications as commercial,industrial, and automotives areas.

We are looking forward to setting up business relationship with you and hope to provide you with the best service and solution. Let us make a better world for our industry!



## Contact us

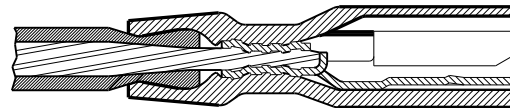
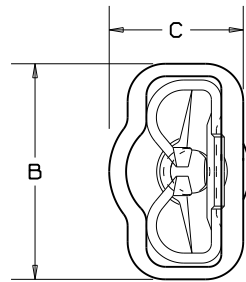
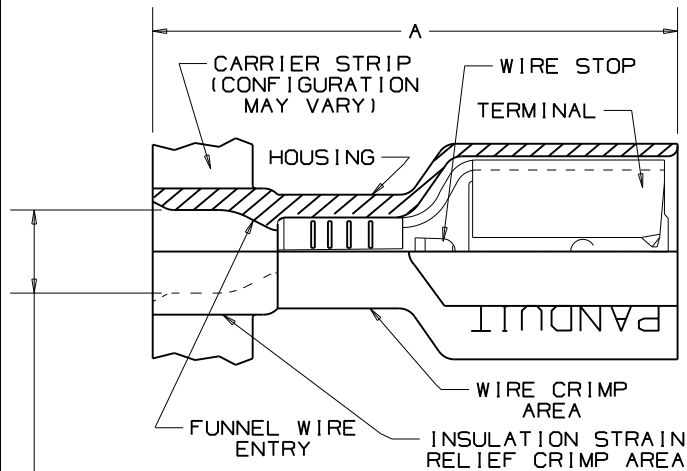
Tel: +86-755-8981 8866 Fax: +86-755-8427 6832

Email & Skype: info@chipsmall.com Web: www.chipsmall.com

Address: A1208, Overseas Decoration Building, #122 Zhenhua RD., Futian, Shenzhen, China



THIS COPY IS PROVIDED ON A RESTRICTED BASIS AND IS NOT TO BE USED IN ANY WAY DETRIMENTAL TO THE INTERESTS OF PANDUIT CORP.



SECTION VIEW OF CRIMPED DISCONNECT

- NOTES:
- UL LISTED & CSA CERTIFIED FOR:
    - A. 600V MAX VOLTAGE RATING
    - B. 221°F (105°C) MAX TEMP RATING
    - C. STRANDED AWG COPPER WIRE ONLY
  - PACKAGE QTY: 3K=3000 PIECES, 2K=2000 PIECES CONTINUOUS MOLDED STRIP CARRIER
  - MATERIAL:
    - A. STAMPING-CDA 260 BRASS, TIN PLATED
    - B. HOUSING-PREMIUM GRADE NYLON FOR SUPERIOR STRAIN RELIEF INSULATION CRIMPING
  - DIMENSIONS IN BRACKETS ARE IN mm OR mm<sup>2</sup>
  - NYLON HOUSING IS OPAQUE
  - DPF10-250F1B-2K IS UL APPROVED FOR USE WITH THE FOLLOWING WIRE COMBINATIONS: (2) #14, (2) #16, (2) #18 TWIST WIRES TOGETHER BEFORE CRIMPING

MAX. WIRE INSUL DIA. (SEE CHART)

TOOL CHART  
RECOMMENDED PRESSES  
CP-851, CP-860  
CP-861, CP-862

PART NUMBER	TAB SIZE	WIRE RANGE AWG (MM <sup>2</sup> )	COLOR (note 5)	MAX. WIRE INSULATION DIAMETER	MIN. WIRE INSULATION DIAMETER	DIMENSIONS in.			STRIP LENGTH 1/32 (0.8) -0	CA-800 & CA-9 APPLICATOR DIE INSERTS
						A ±.03 (1.8)	B ±.01 (1.3)	C ±.01 (1.3)		
DPF18205F1BR-3K	.205/.187 x .032 (5.2/4.8 x 0.8)	22-18 (1.5-1.0)	RED	.106 (2.69)	.060 (1.52)	.78 (19.8)	.31 (7.9)	.22 (5.6)	9/32 (7.1)	CD-800-10 CD9-10A
DPF18206F1BR-3K	.205/.187 x .020 (5.2/4.8 x 0.5)	22-18 (1.5-1.0)	RED	.106 (2.69)	.060 (1.52)	.78 (19.8)	.31 (7.9)	.22 (5.6)	"	
DPF18250F1BR-3K	.250 x .032 (6.3 x 0.8)	22-18 (1.5-1.0)	RED	.106 (2.69)	.060 (1.52)	.84 (21.3)	.35 (8.9)	.22 (5.6)	"	
DPF18-250F1B-3K	.250 x .032 (6.3 x 0.8)	22-18 (1.5-1.0)	RED	.136 (3.45)	.060 (1.52)	.84 (21.3)	.35 (8.9)	.22 (5.6)	"	
DPF18-205F1B-3K	.205/.187 x .032 (5.2/4.8 x 0.8)	22-18 (1.5-1.0)	RED	.136 (3.45)	.060 (1.52)	.78 (19.8)	.31 (7.9)	.22 (5.6)	"	
DPF18-206F1B-3K	.205/.187 x .020 (5.2/4.8 x 0.5)	22-18 (1.5-1.0)	RED	.136 (3.45)	.060 (1.52)	.78 (19.8)	.31 (7.9)	.22 (5.6)	"	
DPF18-187F1B-3K	.187 x .032 (4.8 x 0.8)	22-18 (1.5-1.0)	RED	.136 (3.45)	.060 (1.52)	.78 (19.8)	.29 (7.4)	.16 (4.1)	"	
DPF18-188F1B-3K	.187 x .020 (4.8 x .5)	22-18 (1.5-1.0)	RED	.136 (3.45)	.060 (1.52)	.78 (19.8)	.29 (7.4)	.16 (4.1)	"	
DPF14-250F1B-3K	.250 x .032 (6.3 x 0.8)	16-14 (1.5-2.5)	BLUE	.160 (4.06)	.090 (2.29)	.84 (21.3)	.35 (8.9)	.22 (5.6)	"	CD-800-11 CD9-11A
DPF14-205F1B-3K	.205/.187 x .032 (5.2/4.8 x 0.8)	16-14 (1.5-2.5)	BLUE	.160 (4.06)	.090 (2.29)	.78 (19.8)	.31 (7.9)	.22 (5.6)	"	
DPF14-206F1B-3K	.205/.187 x .020 (5.2/4.8 x 0.5)	16-14 (1.5-2.5)	BLUE	.160 (4.06)	.090 (2.29)	.78 (19.8)	.31 (7.9)	.22 (5.6)	"	
DPF14-187F1B-3K	.187 x .032 (4.8 x 0.8)	16-14 (1.5-2.5)	BLUE	.160 (4.06)	.090 (2.29)	.78 (19.8)	.29 (7.4)	.18 (4.6)	"	
DPF14-188F1B-3K	.187 x .020 (4.8 x .5)	16-14 (1.5-2.5)	BLUE	.160 (4.06)	.090 (2.29)	.78 (19.8)	.29 (7.4)	.18 (4.6)	"	
DPF10-250F1B-2K	.250 x .032 (6.3 x 0.8)	12-10 (4.0-6.0)	YELLOW	.220 (5.59)	.110 (2.79)	.96 (24.4)	.35 (8.9)	.23 (5.8)	3/8 (9.5)	

**SA** CERTIFIED LR31212 **UL** LISTED 20H3 E78522

Panduit part numbers shown on this drawing meet the material requirements of RoHS (EUROPEAN DIRECTIVES 2002/95/EC) as proposed by the Technical Adaptation Committee.

**PANDUIT**

CORP. TINLEY PARK, ILLINOIS

ADDED NOTE TO TWIST MULTIPLE WIRES TOGETHER PRIOR TO CRIMPING

Added Part numbers DPF18205F1BR-3K, DPF18206F1BR-3K, DPF18250F1BR-3K

REELSMART™ DISCOGRIP™  
FULLY INSULATED FEMALE DISCONNECTS  
.250 X .032, .205 X .032/.020, .187 X .032/.020

REV	DATE	BY	CHK	DESCRIPTION	ECN#	CUST	PM	DRAWN BY	CHK'D	SCALE	DRAWING NO./CAD FILENAME
								KRC	LA	NONE	A41409