



Chipsmall Limited consists of a professional team with an average of over 10 year of expertise in the distribution of electronic components. Based in Hongkong, we have already established firm and mutual-benefit business relationships with customers from,Europe,America and south Asia,supplying obsolete and hard-to-find components to meet their specific needs.

With the principle of “Quality Parts,Customers Priority,Honest Operation,and Considerate Service”,our business mainly focus on the distribution of electronic components. Line cards we deal with include Microchip,ALPS,ROHM,Xilinx,Pulse,ON,Everlight and Freescale. Main products comprise IC,Modules,Potentiometer,IC Socket,Relay,Connector.Our parts cover such applications as commercial,industrial, and automotives areas.

We are looking forward to setting up business relationship with you and hope to provide you with the best service and solution. Let us make a better world for our industry!



Contact us

Tel: +86-755-8981 8866 Fax: +86-755-8427 6832

Email & Skype: info@chipsmall.com Web: www.chipsmall.com

Address: A1208, Overseas Decoration Building, #122 Zhenhua RD., Futian, Shenzhen, China



REV	DESCRIPTION	DATE	DWN	APR
A	NEW DRAWING PER ECO-14-007060	13MAY2014	NK	RH

BCD CODE 131

POS	#	1	2	3	4	5	6	7	8	9
C	X	X	X	X	X	X	X	X	X	X
1		X		X		X		X		X
2			X	X			X	X		
4				X	X	X	X			
8								X	X	

HEXADECIMAL CODE 3#1

POS	#	1	2	3	4	5	6	7	8	9	A	B	C	D	E	F
C	X	X	X	X	X	X	X	X	X	X	X	X	X	X	X	X
1		X		X		X		X		X		X		X		X
2			X	X			X	X			X	X			X	X
4				X	X	X	X				X	X	X	X		
8								X	X	X	X	X	X	X	X	X

BCD COMPLEMENT CODE 137

POS	#	1	2	3	4	5	6	7	8	9
C	X	X	X	X	X	X	X	X	X	X
1	X		X		X		X		X	
2	X	X		X	X			X	X	
4	X	X	X					X	X	
8	X	X	X	X	X	X	X			

HEXADECIMAL COMPLEMENT CODE 3#7

POS	#	1	2	3	4	5	6	7	8	9	A	B	C	D	E	F
C	X	X	X	X	X	X	X	X	X	X	X	X	X	X	X	X
1	X		X		X		X		X		X		X		X	
2	X	X		X	X			X	X			X	X			X
4	X	X	X					X	X	X						
8	X	X	X	X	X	X	X									

BCD PLUS BCD COMPLEMENT CODE 141

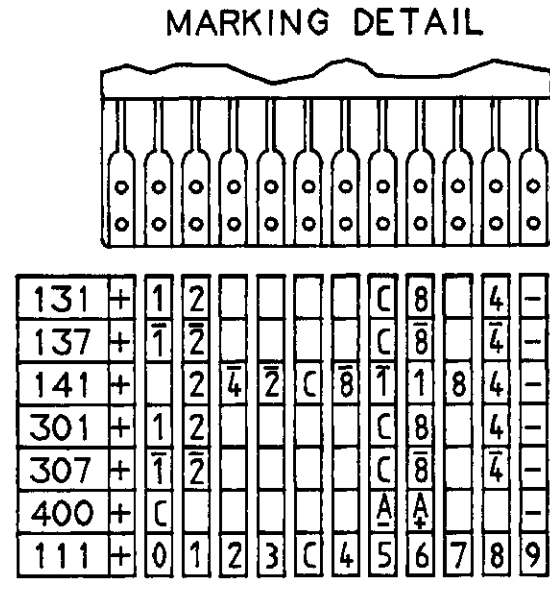
POS	#	1	2	3	4	5	6	7	8	9
C	X	X	X	X	X	X	X	X	X	X
1	X		X		X		X		X	
2	X	X		X	X			X	X	
4	X	X	X					X	X	
8	X	X	X	X	X	X	X			

DECIMAL CODE 111

POS	#	1	2	3	4	5	6	7	8	9
C	X	X	X	X	X	X	X	X	X	X
1	X									
2		X								
3			X							
4				X						
5					X					
6						X				
7							X			
8								X		
9									X	

CHANGE OVER SWITCH CODE 4#8

POS	C	A+	A-
+	X	X	
-	X		X
+	X	X	
-	X		X
+	X	X	
-	X		X
+	X	X	
-	X		X
+	X	X	
-	X		X

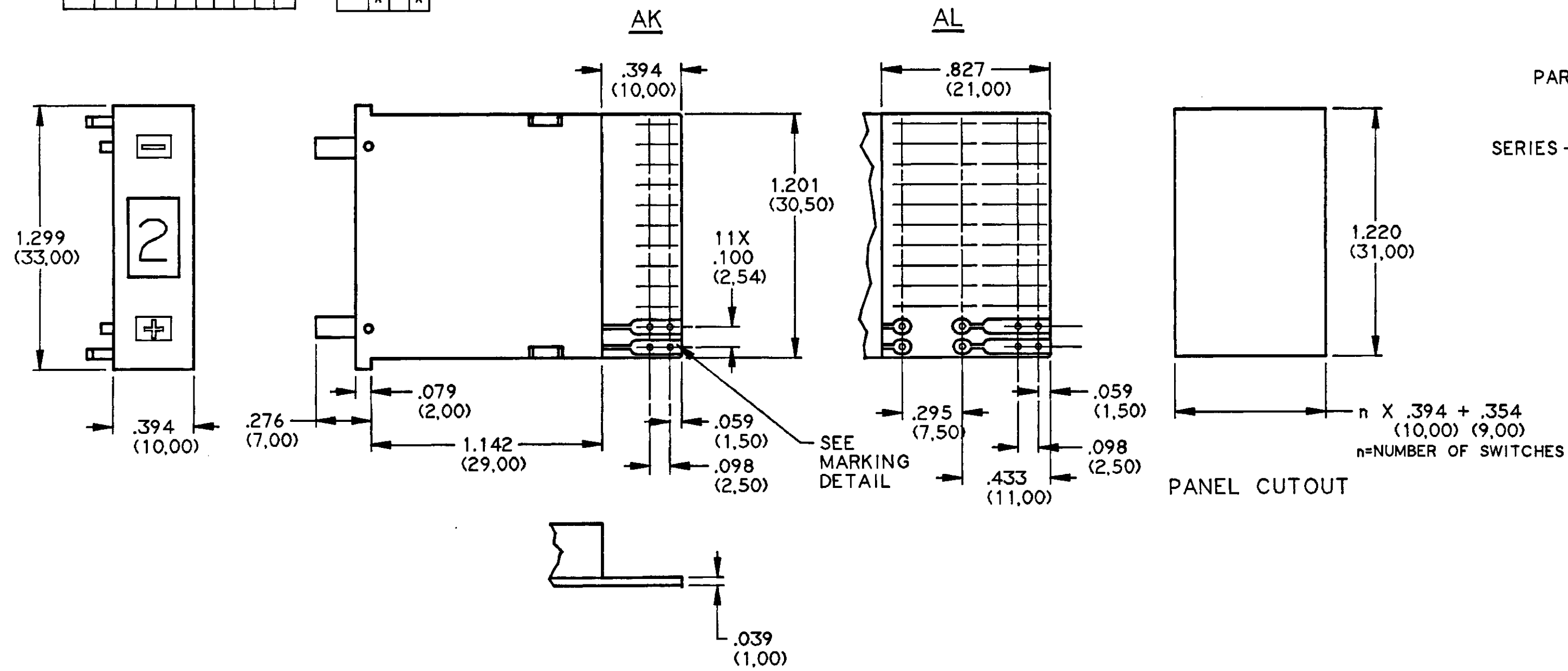


SPECIFICATIONS:

- CONTACT RATING: GOLD 0.4 VA @ 20 VDC OR AC.
- CONTACT CIRCUIT RESISTANCE: 0.20 OHM MAXIMUM.
- MECHANICAL LIFE: MORE THAN 10⁶ OPERATIONS.
- OPERATING TEMPERATURE: -20°C TO +80°C.
- ACTUATION FORCE: APPROX. 16 oz

MATERIALS:

HOUSING: HIGH TEMPERATURE THERMOPLASTIC RESIN
 BLACK MATTE FINISH
 PC BOARD: FR4 GLASS EPOXY
 PC BOARD CONTACTS AND TERMINALS: GOLD OVER NICKEL ON COPPER
 MOVING CONTACTS: GOLD OVER NICKEL ON COPPER ALLOY
 WINDOW: THERMOPLASTIC RESIN
 CHARACTER COLOR: WHITE ON BLACK BACKGROUND
 CHARACTER HEIGHT: 10/16 DIGIT .276 (7,00)/.169 (4,30)



PART NUMBER SEQUENCE

DPS10***A**

SERIES ——— TYPE: AK AL

CODE: 111
 131
 137
 141
 301
 307
 400

UNLESS OTHERWISE SPECIFIED DIMENSIONS ARE IN INCH TOLERANCES PER DIN 7168					THIRD ANGLE PROJECTION	UNLESS OTHERWISE SPECIFIED DIMENSIONS ARE IN INCHES DO NOT SCALE PRINT			ORIGINAL DATE OF DRAWING: 10/9/92	TE Connectivity	
GREATER THAN	.020 (0,50)	.236 (6,00)	1.181 (30,00)	4.724 (120,00)		12.402 (315,00)	DATABASE 81035	MAINCELL 81035	LIBRARY		DRAWN: C. MORAN
LESS THAN	.236 (6,00)	1.181 (30,00)	4.724 (120,00)	12.402 (315,00)	39.370 (1000,00)	MATERIAL: SEE SPECIFICATIONS ABOVE			CHECKED:	DATE:	DWG. NO. C-1437603-2
	±.004 (±0,10)	±.008 (±0,20)	±.012 (±0,30)	±.020 (±0,50)	±.031 (±0,80)	FINISH:			APPROVED: <i>N. S. Kishan</i>	DATE: 11/10/92	REV. A
									CODE IDENT. NO. 91506	DWG. SIZE C	PRODUCT CODE: H13
									NEXT ASSY:		SCALE: 2/1 SHEET 1 OF 1