



Chipsmall Limited consists of a professional team with an average of over 10 year of expertise in the distribution of electronic components. Based in Hongkong, we have already established firm and mutual-benefit business relationships with customers from,Europe,America and south Asia,supplying obsolete and hard-to-find components to meet their specific needs.

With the principle of “Quality Parts,Customers Priority,Honest Operation,and Considerate Service”,our business mainly focus on the distribution of electronic components. Line cards we deal with include Microchip,ALPS,ROHM,Xilinx,Pulse,ON,Everlight and Freescale. Main products comprise IC,Modules,Potentiometer,IC Socket,Relay,Connector.Our parts cover such applications as commercial,industrial, and automotives areas.

We are looking forward to setting up business relationship with you and hope to provide you with the best service and solution. Let us make a better world for our industry!



Contact us

Tel: +86-755-8981 8866 Fax: +86-755-8427 6832

Email & Skype: info@chipsmall.com Web: www.chipsmall.com

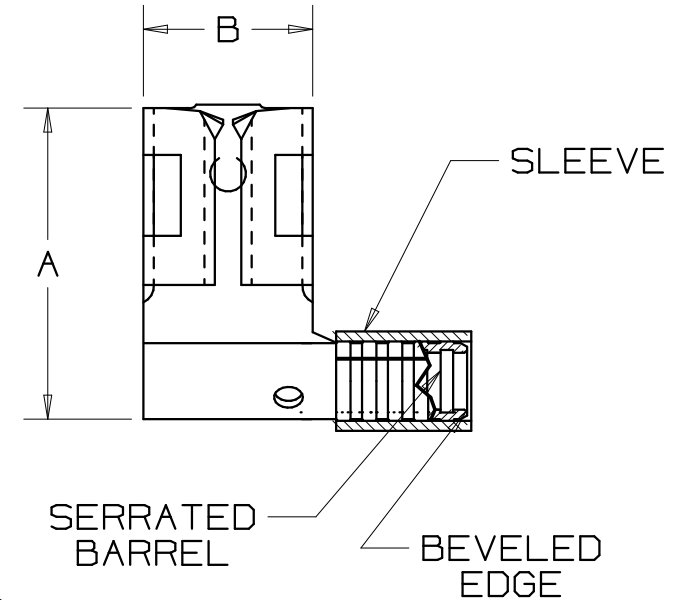
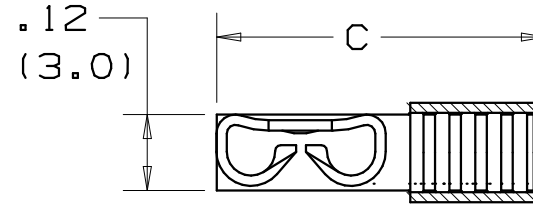
Address: A1208, Overseas Decoration Building, #122 Zhenhua RD., Futian, Shenzhen, China



| PART NUMBER | TAB SIZE | WIRE RANGE AWG | DIMENSIONS in. | | |
|-------------|-------------------------------|-------------------|----------------|--------------|---------------|
| | | | A ±.02 | B ±.01 | C ±.03 |
| DR18-205 | OR .205 X .032 .187 X .032 | 22-18 | .53 (13.5) | .25 (6.4) | .54 (13.7) |
| DR14-205 | OR .205 X .032 .187 X .032 | 16-14 | .55 (14.0) | .25 (6.4) | .54 (13.7) |
| DR18-206 | OR .205 X .020 .187 X .020 | 22-18 | .53 (13.5) | .25 (6.4) | .54 (13.7) |
| DR14-206 | OR .205 X .020 .187 X .020 | 16-14 | .55 (14.0) | .25 (6.4) | .54 (13.7) |

NOTES:

- UL LISTED AND CSA CERTIFIED FOR:
 - 302° F (150° C) MAX. TEMP. RATING
 - STRANDED COPPER WIRE ONLY
- MATERIAL:
 - STAMPING - .018" (0.46) THK BRASS, TIN PLATED
 - SLEEVE - BRASS, TIN PLATED
- PACKAGE QTY: STD. PKG. - C = 100
BULK PKG. - M = 1000
- FIRST INSERTION FORCE - 12 LB. (53N) MAX
FIRST WITHDRAWAL FORCE - 12 LB. (53N) MAX
6 LB. (27N) MIN
- DIMENSIONS IN BRACKETS ARE IN MILLIMETERS
- INSTALLATION TOOLS:
 - UL LISTED AND CSA CERTIFIED: CT-100, CT-200, CT-570, CT-1570
 - PANDUIT APPROVED: CT-160
- WIRE STRIP LENGTH: 9/32 ^{+1/32}/₀ (7.1 ^{+0.8}/₀)



LISTED
20H3
E78522



CERTIFIED
LR31212

| | | | | | | | | |
|-----|-------|-----|-----|-------------------------------|---------|------|-----|-----|
| 6 | 7/06 | DAW | DAW | .12 HEIGHT OVER CURLS WAS .11 | TR00146 | | | |
| 5 | 1/01 | RM | | FILESPEC WAS N41328AA_PCD_04 | 08925 | JAC | CCH | |
| 4 | 4-98 | ED | | ADDED SLOTS TO DRWG. | 06755 | | | |
| 3 | 12-95 | ED | | REV.S TO NOTES AND DRWNG. | 03834 | LA | TFK | |
| 2 | 8-88 | DW | | REDRAWN WITH REVISIONS | | | JRB | |
| REV | DATE | BY | CHK | DESCRIPTION | ECN # | CUST | PM | APP |

A41328_06

PANDUIT CORP.

TINLEY PARK, ILLINOIS

NON-INSULATED, SLEEVED RIGHT ANGLE
FEMALE DISCONNECT .205/.206 SERIES

| | | | |
|-----------------|-------|---------------|-----------------------|
| DRAWN BY DAW | CHK'D | SCALE NONE | DRAWING NO. A41328 |
|-----------------|-------|---------------|-----------------------|