



Chipsmall Limited consists of a professional team with an average of over 10 year of expertise in the distribution of electronic components. Based in Hongkong, we have already established firm and mutual-benefit business relationships with customers from,Europe,America and south Asia,supplying obsolete and hard-to-find components to meet their specific needs.

With the principle of “Quality Parts,Customers Priority,Honest Operation,and Considerate Service”,our business mainly focus on the distribution of electronic components. Line cards we deal with include Microchip,ALPS,ROHM,Xilinx,Pulse,ON,Everlight and Freescale. Main products comprise IC,Modules,Potentiometer,IC Socket,Relay,Connector.Our parts cover such applications as commercial,industrial, and automotives areas.

We are looking forward to setting up business relationship with you and hope to provide you with the best service and solution. Let us make a better world for our industry!



## Contact us

Tel: +86-755-8981 8866 Fax: +86-755-8427 6832

Email & Skype: [info@chipsmall.com](mailto:info@chipsmall.com) Web: [www.chipsmall.com](http://www.chipsmall.com)

Address: A1208, Overseas Decoration Building, #122 Zhenhua RD., Futian, Shenzhen, China



## 15-100W, 5-48V Output DIN Rail Mount Power Supplies

### Features

- ◆ Compact Size
- ◆ High Efficiency (Up to 91%)
- ◆ ErP Compliant Design
- ◆ Low No Load Power Draw
- ◆ Class 2 Models to UL1310
- ◆ Class 1 Div 2 for Hazardous Locations



### Key Market Segments & Applications



Specifications					
Model		DRB15	DRB30	DRB50	DRB100
Input Voltage range	V	85 - 264VAC, 120 - 373VDC* (Withstands 300VAC for 5 seconds)			
Input Frequency	Hz	47 - 63Hz			
Inrush Current (typ) (Cold Start)	A	35A	40A	50A	40A
Power Factor (110/230VAC) Meets EN61000-3-2	-	0.55 / 0.42	0.56 / 0.46	0.6 / 0.5	0.98 / 0.93
Input Current (110/230VAC)	A	0.27 / 0.17	0.55 / 0.33	0.9 / 0.55	1.2 / 0.6
Line & Load Regulation	-	See model selector			
Ripple & Noise	-	See model selector			
Overcurrent Protection	-	Hiccup with auto recovery			
Overvoltage Protection	-	See model selector. Cycle AC input voltage to reset			
Hold Up Time (230VAC input)	ms	> 20ms			
Efficiency	-	See model selector			
No Load Power Draw	W	<0.3W	<0.3W	<0.3W	<0.5W
LED Indicator	-	Green LED indicates DC is OK			
Operating Temperature (1)	°C	-20 to +70°C. (DRB30-100, derate linearly to 50% load from 55 to 70°C)			
Storage Temperature	-	-40 to +85°C			
Operating Humidity (non condensing)	%RH	5 - 95%RH			
Parallel Operation	-	Not available			
Series Operation	-	Possible			
Cooling	-	Convection			
Withstand Voltage (For 1 minute)	VAC	Input to Output 3kVAC, Input to GND 1.5kVAC, Output to GND 500VAC			
Isolation Resistance	MΩ	>100MΩ at 25°C, 70%RH & 500VDC			
Vibration (Non operating)	-	10-55Hz (sweep for 1 min); 19.6m/s <sup>2</sup> (2G) Constant; X,Y,Z each 1 hour			
Shock	-	294m/s (30G) 11ms half sine			
Safety Agency Certifications**	-	UL508 Listed, UL60950-1, CSA22.2 No60950-1, EN60950-1, CE Mark			
Conducted & Radiated EMI	-	UL1310 Class 2 (2), Class 1 Div 2, Group A, B, C, D (ISA 12.12.01)			
Immunity	-	EN55022-B Radiated & Conducted			
		EN61000-4-2 (lvl 4) , -3 (lvl 3), -4 (lvl 4)			
		-5 (norm mode lvl 3, com mode lvl 4), -6 (lvl 3), -8 (lvl 4), -11 (class 3)			
Weight (Typ)	g	85	95	175	300
Size (WxHxD)	in	0.71 x 2.95 x 3.54	0.83 x 2.95 x 3.54	1.18 x 2.95 x 3.54	1.77 x 2.95 x 3.94
	mm	18 x 75 x 90	21 x 75 x 90	30 x 75 x 90	45 x 75 x 100
Case material	-	Flame Retardant Polycarbonate (UL94 V-0)			
Warranty	yrs	Three years			

(1) For operation below -10°C, start up load is derated linearly to 50% load down to -20°C

(2) NEC Class 2 in accordance with UL1310. Excludes DRB50-5-1 and DRB100-24-1 models

\* Safety certified for AC input only

\*\* UL1310 and Class 1 Div 2 applicable for units built after August 2016

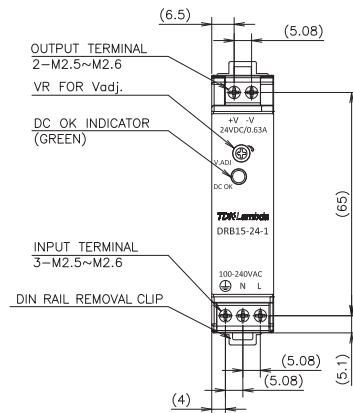
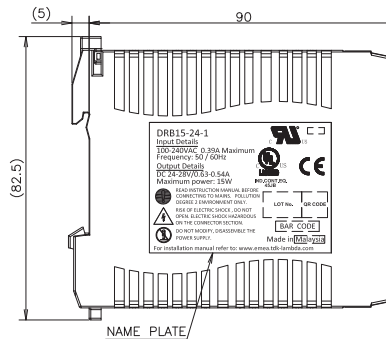
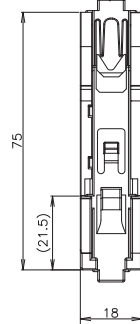


Model	Output Voltage	Adjust Range	Max Current	Max Power	Load Reg	Line Reg	Ripple & Noise	Overvoltage Protection	Efficiency (%) (115/230VAC)
DRB50-5-1	5V	5 - 5.5V	6.0A	30W	50mV	50mV	30mV	5.75 - 6.75V	79 / 80
DRB30-12-1	12V	12 - 15V	2.5A	30W	150mV	150mV	40mV	15.96 - 18.72V	86 / 88
DRB50-12-1	12V	12 - 15V	3.4A	51W(3)	150mV	150mV	20mV	15.96 - 18.72V	88 / 90
DRB15-24-1	24V	24 - 28V	0.63A	15.1W	240mV	240mV	20mV	30 - 33.6V	87 / 90
DRB30-24-1	24V	24 - 28V	1.25A	30W	240mV	240mV	30mV	30 - 33.6V	88 / 90
DRB50-24-1	24V	24 - 28V	2.1A	50.4W	240mV	240mV	30mV	30 - 33.6V	88 / 90
DRB100-24-1	24V	24 - 28V	4.2A	100.8W	240mV	240mV	30mV	30 - 33.6V	90 / 91
DRB50-48-1	48V	48 - 52.8V	1.05A	50.4W	480mV	480mV	40mV	53.76 - 68.16V	90 / 91

(2) With output set at 15V. 40.8W maximum power when output is set at 12V.

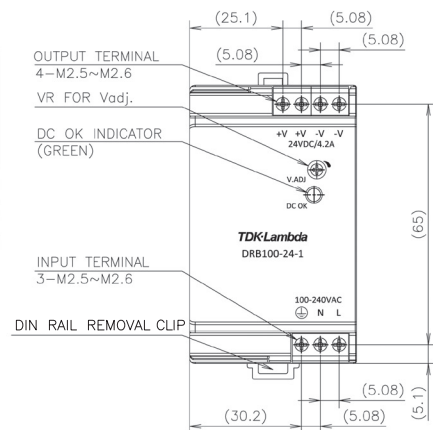
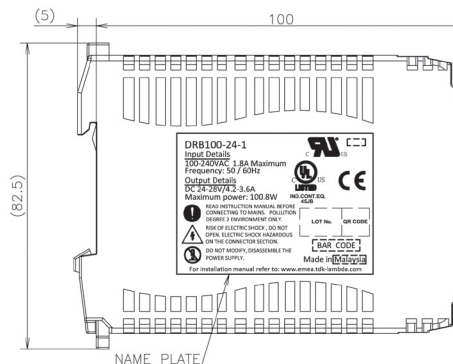
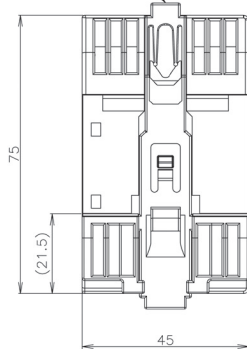
## Outline DRB15

DIN RAIL REMOVAL BUTTON  
BY PUSHING



## Outline DRB100

DIN RAIL REMOVAL BUTTON  
BY PUSHING



For Additional Information, please visit  
[us.tdk-lambda.com/lp/products/drbs-series.htm](http://us.tdk-lambda.com/lp/products/drbs-series.htm)

