



Chipsmall Limited consists of a professional team with an average of over 10 year of expertise in the distribution of electronic components. Based in Hongkong, we have already established firm and mutual-benefit business relationships with customers from,Europe,America and south Asia,supplying obsolete and hard-to-find components to meet their specific needs.

With the principle of “Quality Parts,Customers Priority,Honest Operation,and Considerate Service”,our business mainly focus on the distribution of electronic components. Line cards we deal with include Microchip,ALPS,ROHM,Xilinx,Pulse,ON,Everlight and Freescale. Main products comprise IC,Modules,Potentiometer,IC Socket,Relay,Connector.Our parts cover such applications as commercial,industrial, and automotives areas.

We are looking forward to setting up business relationship with you and hope to provide you with the best service and solution. Let us make a better world for our industry!



Contact us

Tel: +86-755-8981 8866 Fax: +86-755-8427 6832

Email & Skype: info@chipsmall.com Web: www.chipsmall.com

Address: A1208, Overseas Decoration Building, #122 Zhenhua RD., Futian, Shenzhen, China





Arduino Motor Shield (L293) (SKU: DRI0001)



Arduino Motor Shield (L293) V2 DRI0001

Contents

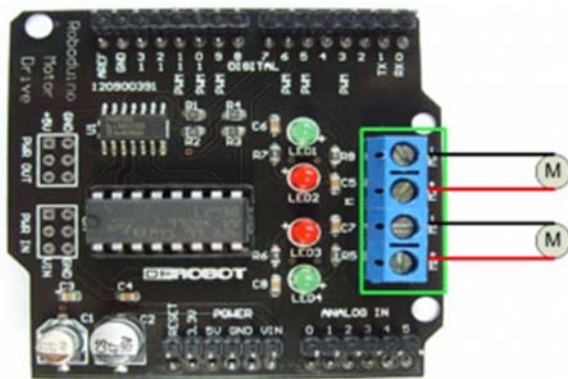
- [1 Introduction](#)
- [2 Diagram](#)
- [3 Pin Allocation](#)
- [4 Sample Code](#)
- [5 Schematics](#)

Introduction

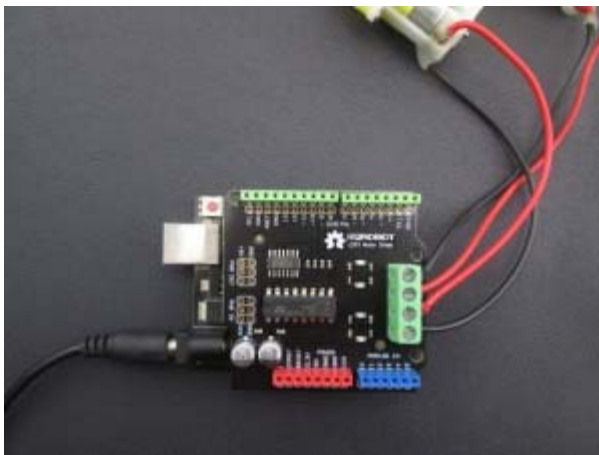
This motor shield allows Arduino to drive two channel DC motors. It uses a L293B chip which delivers output current up to 1A (2A for L298P version) each channel. The speed control is achieved through conventional PWM which can be obtained from Arduino's PWM output Pin 5 and 6. The enable/disable function of the motor control is signalled by Arduino Digital Pin 4 and 7. Roboduino Motor Shield uses PWM output Pin 6 and 9 and Digital Pin 7 and 8.

The Motor shield is powered directly from Arduino. It is strongly advised that use external power supply (on Arduino) to power the Arduino instead of the USB power supply.

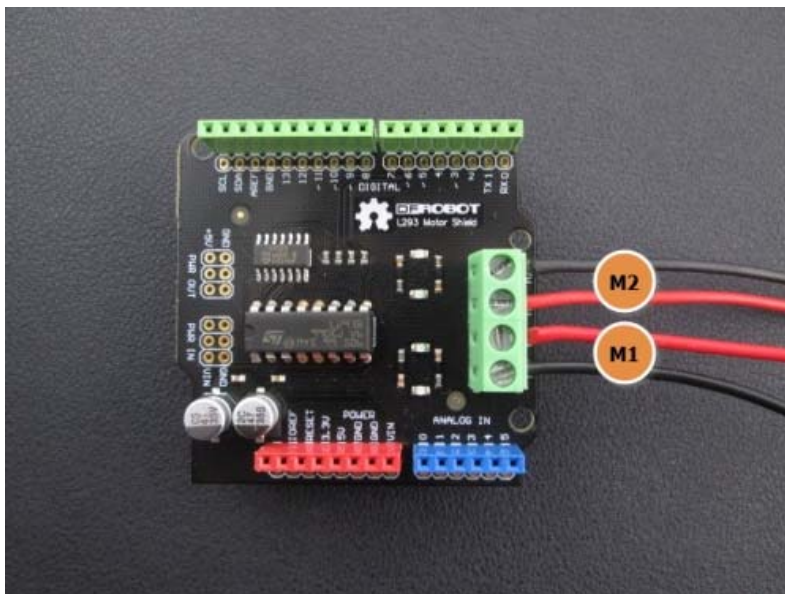
Diagram



Motor Shield V1



Motor Shield V2



Pin Allocation

Pin	Function
Digital 4	Motor 2 Direction control
Digital 5	Motor 2 PWM control
Digital 6	Motor 1 PWM control
Digital 7	Motor 1 Direction control

Sample Code

```
//This motor shield use Pin 6,5,7,4 to control the motor
// Simply connect your motors to M1+,M1-,M2+,M2-
// Upload the code to Arduino/Roboduino
// Through serial monitor, type 'a','s', 'w','d','x' to control the motor
// www.dfrobot.com
// Last modified on 24/12/2009

int EN1 = 6;
int EN2 = 5;  //Roboduino Motor shield uses Pin 9
int IN1 = 7;
int IN2 = 4; //Latest version use pin 4 instead of pin 8

void Motor1(int pwm, boolean reverse) {
  analogWrite(EN1, pwm); //set pwm control, 0 for stop, and 255 for maximum speed
  if (reverse) {
    digitalWrite(IN1, HIGH);
  }
  else {
    digitalWrite(IN1, LOW);
  }
}
```

```

void Motor2(int pwm, boolean reverse) {
    analogWrite(EN2, pwm);
    if (reverse) {
        digitalWrite(IN2, HIGH);
    }
    else {
        digitalWrite(IN2, LOW);
    }
}

void setup() {
    int i;
    // for(i=6;i<=9;i++) //For Roboduino Motor Shield
    // pinMode(i, OUTPUT); //set pin 6,7,8,9 to output mode

    for (i = 4; i <= 7; i++) //For Arduino Motor Shield
        pinMode(i, OUTPUT); //set pin 4,5,6,7 to output mode
    Serial.begin(9600);
}

void loop() {
    int x, delay_en;
    char val;
    while (1) {
        val = Serial.read();
        if (val != -1) {
            switch (val) {
                case 'w': //Move ahead
                    Motor1(100, true); //You can change the speed, such as Motor(50,true)
                    Motor2(100, true);
                    break;
                case 'x': //move back
                    Motor1(100, false);

```

```
        Motor2(100, false);  
        break;  
    case 'a': //turn left  
        Motor1(100, false);  
        Motor2(100, true);  
        break;  
    case 'd': //turn right  
        Motor1(100, true);  
        Motor2(100, false);  
        break;  
    case 's': //stop  
        Motor1(0, false);  
        Motor2(0, false);  
        break;  
    }  
}  
}
```

```
}
```