



Chipsmall Limited consists of a professional team with an average of over 10 year of expertise in the distribution of electronic components. Based in Hongkong, we have already established firm and mutual-benefit business relationships with customers from,Europe,America and south Asia,supplying obsolete and hard-to-find components to meet their specific needs.

With the principle of “Quality Parts,Customers Priority,Honest Operation,and Considerate Service”,our business mainly focus on the distribution of electronic components. Line cards we deal with include Microchip,ALPS,ROHM,Xilinx,Pulse,ON,Everlight and Freescale. Main products comprise IC,Modules,Potentiometer,IC Socket,Relay,Connector.Our parts cover such applications as commercial,industrial, and automotives areas.

We are looking forward to setting up business relationship with you and hope to provide you with the best service and solution. Let us make a better world for our industry!



Contact us

Tel: +86-755-8981 8866 Fax: +86-755-8427 6832

Email & Skype: info@chipsmall.com Web: www.chipsmall.com

Address: A1208, Overseas Decoration Building, #122 Zhenhua RD., Futian, Shenzhen, China



DIGI REMOTE MANAGER[®]

Centrally manage, monitor and configure remote devices over 3G/4G LTE

Meet performance obligations and security requirements with fast, efficient troubleshooting — as well as remote configuration and performance monitoring — while enjoying greater device reliability.

Digi Remote Manager provides an efficient, cost-effective way to remotely monitor, update and manage Digi TransPort intelligent routers over 3G/4G LTE.

Digi Remote Manager includes:

Device Health

Lets you set the performance parameters for healthy devices and create reports and alarms to stay ahead of network problems.

Compliance and Security

Lets you maintain security compliance (e.g., PCI, HIPAA, NIST) by defining a gold standard configuration, and then scanning and fixing any out-of-compliance devices.

Firmware Updates

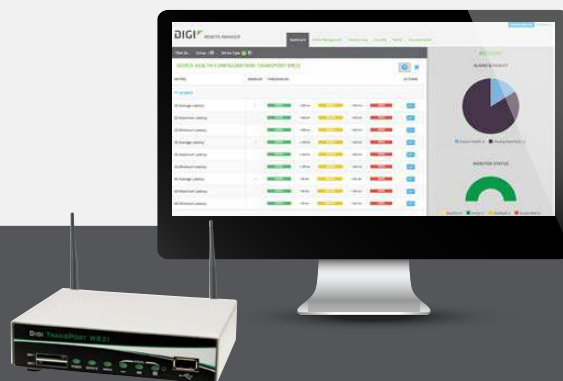
Allows you to schedule firmware updates to groups of devices en masse.

Optimized for Digi TransPort[®]:

- Meet service-level commitments
- Stay compliant with payment card standards
- Keep devices up and running
- Complement your network management tools

Ideal for:

- Network operations
- System administrators
- Network engineering
- Network administrators



Exceed Customer Expectations

Meet Service-Level Commitments

Your customers depend on you for reliable connections. With Digi Remote Manager, you can visually monitor and report on the performance metrics that matter most, including:

- Cellular connection history
- 3G/4G LTE signal quality
- Packet delivery
- Latency
- Cellular data sent and received
- CPU and memory utilization
- Network interface throughput

Stay Compliant with Payment Card Industry (PCI) Standards

Digi has taken an industry-leading position around the adoption of PCI-DSS and other relevant security certifications in the cloud such as HIPAA and NIST, as evidenced by numerous security certifications and validated by an official PCI Report on Compliance (ROC). Digi Remote Manager finds

and fixes inappropriate or inaccurate configurations before someone can exploit them. It lets you define a device profile, assign the profile to all devices in a group, and monitor and auto-remediate any variances. Digi Remote Manager can also restrict incoming traffic to only allow SSL connections, eliminating unencrypted TCP connections.

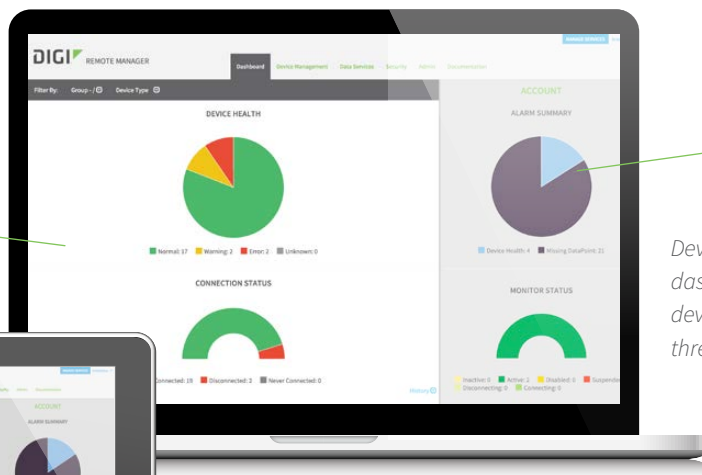
Keep Your Devices Up and Running

Many things can go wrong when you are operating a network of distributed M2M routers; Digi Remote Manager lets you diagnose and fix remote devices without sending a technician on site. That means your critical applications enjoy greater reliability and availability without expensive site visits.

Complement Your Network Management Tools

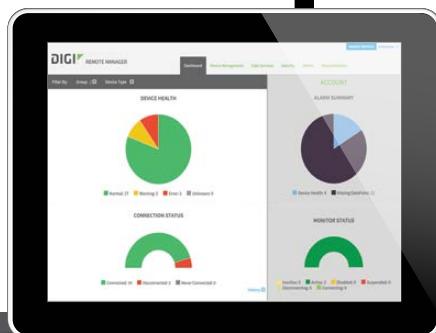
By combining hardware device support for SNMP v1/v2c/v3 and sub-edition or “module” options from the Digi Remote Manager suite, you can employ a best-of-breed solution while still using your existing network management tools.

Set performance thresholds and inspect individual devices



View the summary status of groups of devices

Device Health Manager provides a visual dashboard displaying the status of your devices in the field based on health thresholds that you define



Centralized Management, Monitoring and Configuration of Your Devices

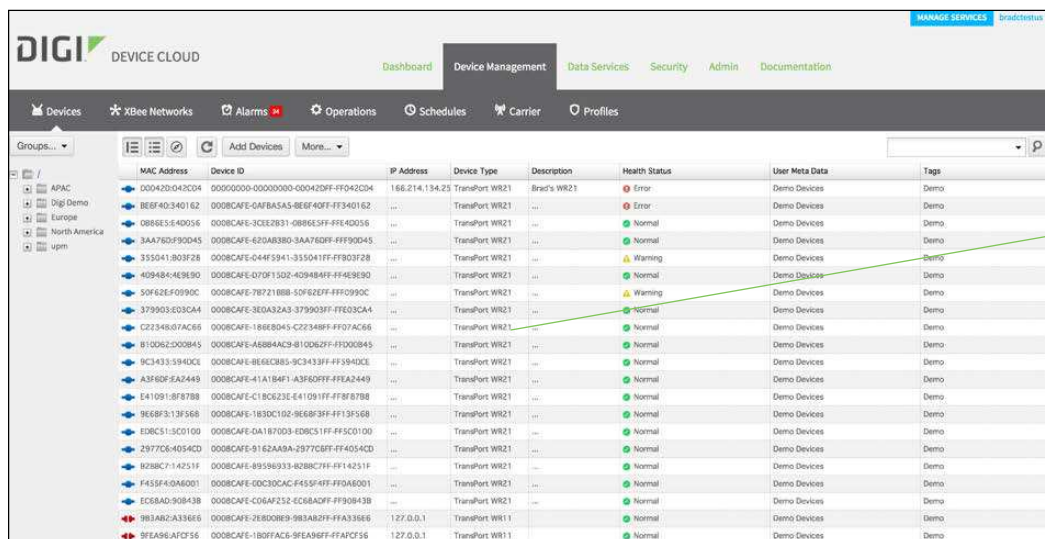
Choose the complete Digi Remote Manager suite, or just the individual sub-editions as supplements for an existing solution, to deploy a complete remote management solution for Digi TransPort routers.

Device Health

Through regular polling of your Digi TransPort devices, this central dashboard lets you stay abreast of what's going on with your devices in the field. First, define the attributes and values of a healthy device. Then, view visual displays of device-health metrics for the device, group of devices or your complete network of devices. Also schedule regular reports about the health for your device fleet and get alerts when a device state changes.

Compliance and Security

Digi Remote Manager allows you to define device profiles and establish standard configurations for firmware and file-system contents. Or, select from a set of recommended PCI-DSS validated device profiles. Choose the scanning frequency and get alerted when a compliance breach is detected. You can even script automatic predefined remediations to reapply profiles and reestablish compliance.



The screenshot shows the Digi Device Cloud interface with a table of device health status. The table has columns for MAC Address, Device ID, IP Address, Device Type, Description, Health Status, User Meta Data, and Tags. The Health Status column shows various icons: a green circle for 'Normal', a yellow triangle for 'Warning', and a red circle with a white exclamation mark for 'Error'. A green callout box points to the Health Status column with the text: 'Perform mass configuration and firmware updates to remote devices'. Another green callout box points to the Health Status column with the text: 'See the scanning status for all Digi TransPort devices in your network'.

MAC Address	Device ID	IP Address	Device Type	Description	Health Status	User Meta Data	Tags
0004201042C04	00000000-00000000-00042DFE-FF042C04	166.214.134.25	TransPort WR21	Brae's WR21	Normal	Demo Devices	Demo
BE8F40340162	000BCAFE-0A8BA545-BE8F40F3-FF340162	...	TransPort WR21	...	Error	Demo Devices	Demo
0886E5540056	000BCAFE-3CE3B331-0886E5FF-FF40056	...	TransPort WR21	...	Normal	Demo Devices	Demo
3AA76D3F90A5	000BCAFE-620AB380-3AA76DFF-FFF90A5	...	TransPort WR21	...	Normal	Demo Devices	Demo
355041803F28	000BCAFE-04F59413-355041FF-FF903F28	...	TransPort WR21	...	Warning	Demo Devices	Demo
4094844C9690	000BCAFE-07DF1332-409484FF-FF409690	...	TransPort WR21	...	Normal	Demo Devices	Demo
50962E40990C	000BCAFE-78721888-50962EFF-FFF0990C	...	TransPort WR21	...	Warning	Demo Devices	Demo
379903E03CA4	000BCAFE-3E0A32A3-379903FF-FFE03CA4	...	TransPort WR21	...	Normal	Demo Devices	Demo
C22348607AC65	000BCAFE-186E8045-C22348FF-FF07AC65	...	TransPort WR21	...	Normal	Demo Devices	Demo
810062E008A5	000BCAFE-A6884AC9-810062FF-FF0008A5	...	TransPort WR21	...	Normal	Demo Devices	Demo
9C34335940CE	000BCAFE-BE68C8B5-9C3433FF-FF5940CE	...	TransPort WR21	...	Normal	Demo Devices	Demo
A3F8DF5A2449	000BCAFE-41A1B4F1-A3F8DFFF-FFA2449	...	TransPort WR21	...	Normal	Demo Devices	Demo
E410918F8788	000BCAFE-C18C233C-E41091FF-FF8F8788	...	TransPort WR21	...	Normal	Demo Devices	Demo
9E68F313F568	000BCAFE-1B3DC1D2-9E68F3FF-FF13F568	...	TransPort WR21	...	Normal	Demo Devices	Demo
ED8C515C0100	000BCAFE-0A1870D3-ED8C51FF-FF5C0100	...	TransPort WR21	...	Normal	Demo Devices	Demo
Z977064054CD	000BCAFE-0162A9A9-Z97706FF-FF4054CD	...	TransPort WR21	...	Normal	Demo Devices	Demo
R298C714251F	000BCAFE-89580633-R298C7FF-FF14251F	...	TransPort WR21	...	Normal	Demo Devices	Demo
F455FA0A0001	000BCAFE-00C30CAC-F455FAFF-FF0A0001	...	TransPort WR21	...	Normal	Demo Devices	Demo
EC68AD508438	000BCAFE-C06A2532-EC68ADFF-FF08438	...	TransPort WR21	...	Normal	Demo Devices	Demo
9818AB4A3566	000BCAFE-268008E9-9818ABFF-FFA33566	127.0.0.1	TransPort WR11	...	Normal	Demo Devices	Demo
8FEA96AFCF56	000BCAFE-1B0FA636-8FEA96FF-FFAFCF56	127.0.0.1	TransPort WR11	...	Normal	Demo Devices	Demo

Perform mass configuration and firmware updates to remote devices


See the scanning status for all Digi TransPort devices in your network

Firmware Updates

Manage all aspects of the firmware update process with complete alerts on updates and failures for devices, groups and the overall fleet from Digi Remote Manager. Schedule automatic updates or push manual updates (upgrades or downgrades) on an ad hoc basis. Digi Remote Manager also collects a complete audit trail of all updates for reporting and compliance.

A Complete Solution

- ✓ Centralized management of remote Digi TransPort devices over 3G/4G LTE
- ✓ Automatically monitor individual devices for PCI security compliance
- ✓ Get reports and alerts on performance statistics such as connection history, signal quality, latency, data usage and packet loss
- ✓ Monitor the status and location of remote devices through a web browser
- ✓ Configure to only allow SSL connections
- ✓ Activate or deactivate cellular lines and monitor data to ensure you never incur overage charges
- ✓ Certified SSAE-16 and ISO27001 facilities
- ✓ More than 175 security controls in place to protect your network
- ✓ Compliance with security frameworks like PCI, HIPAA, NIST and more
- ✓ Open APIs to support application development

		Features		
		Device Health	Compliance & Security	Firmware Updates
MSRP	\$2.50/device/month			
BEST WHEN YOU NEED:	A complete device management solution with all sub-editions plus additional features	Health monitoring of individual devices and/or overall network	Automated scans to detect early signs of network tampering	Turnkey delivery of the latest firmware
BENEFITS YOU WILL REALIZE:	Increase operational efficiencies of managing a large network and decrease expenses by remote management	A clear view into the health of your network, plus current and historical performance metrics on individual devices	Automated device scans and notification to detect early signs of network tampering and mitigate risk of exposure	Decreased expenses by eliminating the need to send technicians onsite

- Foundational Product Line Values
- ✓ PCI-DSS validated with Report on Compliance (ROC)
 - ✓ No local servers or software to maintain
 - ✓ Integration with existing network management tools
 - ✓ Hosted in multiple commercial-grade SSAE-16 and ISO27001 certified facilities in NA and Europe



For more information about Digi Remote Manager, visit www.digi.com/cloud

91002978
B2/1216

877-912-3444 | 952-912-3444