



Chipsmall Limited consists of a professional team with an average of over 10 year of expertise in the distribution of electronic components. Based in Hongkong, we have already established firm and mutual-benefit business relationships with customers from,Europe,America and south Asia,supplying obsolete and hard-to-find components to meet their specific needs.

With the principle of “Quality Parts,Customers Priority,Honest Operation,and Considerate Service”,our business mainly focus on the distribution of electronic components. Line cards we deal with include Microchip,ALPS,ROHM,Xilinx,Pulse,ON,Everlight and Freescale. Main products comprise IC,Modules,Potentiometer,IC Socket,Relay,Connector.Our parts cover such applications as commercial,industrial, and automotives areas.

We are looking forward to setting up business relationship with you and hope to provide you with the best service and solution. Let us make a better world for our industry!



Contact us

Tel: +86-755-8981 8866 Fax: +86-755-8427 6832

Email & Skype: info@chipsmall.com Web: www.chipsmall.com

Address: A1208, Overseas Decoration Building, #122 Zhenhua RD., Futian, Shenzhen, China

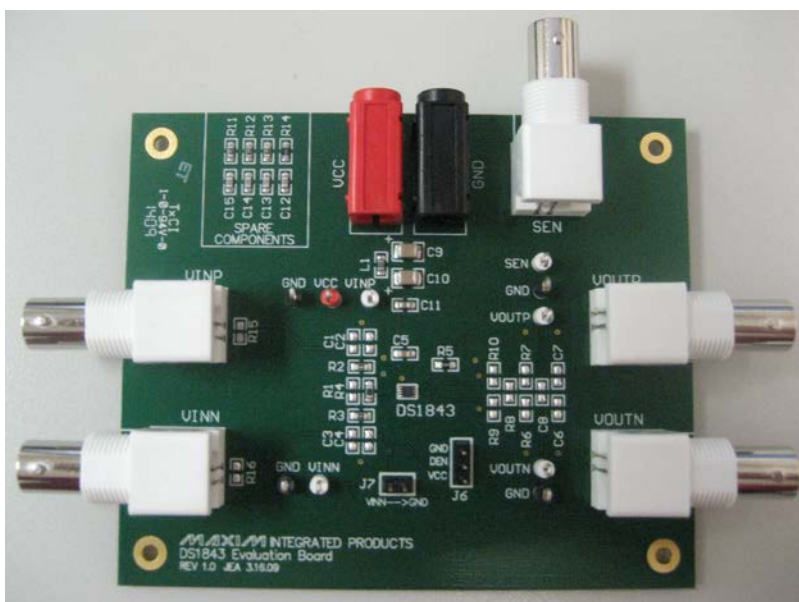


DS1843 Evaluation Kit User Guide

UG6224; Rev 0; 10/15

Below are instructions for connecting and powering the DS1843 evaluation kit. See the schematic at the end of this document for more information.

1. Connect GND, then V_{CC} to a power supply. V_{CC} should be between 3.0V and 5.5V. V_{CC} is filtered on the EV kit using a 600 Ω ferrite bead.
2. Jumper J6 is provided to switch DEN (differential output enable) between V_{CC} and GND to select single-ended or differential output. Jumper DEN to GND for differential output.
3. A BNC jack is provided for the SEN (sample enable) input. A 50 Ω termination to ground (R5) is included on the EV kit board. Apply a pulse of 300ns or greater to this input. Ensure that the pulse generator is set up with a 50 Ω series resistance.
4. Inputs V_{INP} and V_{INN} are connected to BNC jacks. Several footprints have been provided so the loading applied to the inputs can be changed. This EV kit is shipped configured for a current-source input with a 1.6k Ω resistor between V_{INP} and V_{INN} . V_{INN} can be connected to GND using the jumper J7 " $V_{INN} \rightarrow GND$."
5. The outputs V_{OUTP} and V_{OUTN} are also connected to BNC jacks. Again, several footprints have been included to add loading to these outputs. This kit is shipped with no loading applied to the two output pins.
6. All optional components use 0805 footprints. The *Spare Components* section of the board contains some optional components that can be used to load either the inputs or the outputs of the DS1843.



©2015 by Maxim Integrated Products, Inc. All rights reserved. Information in this publication concerning the devices, applications, or technology described is intended to suggest possible uses and may be superseded. MAXIM INTEGRATED PRODUCTS, INC. DOES NOT ASSUME LIABILITY FOR OR PROVIDE A REPRESENTATION OF ACCURACY OF THE INFORMATION, DEVICES, OR TECHNOLOGY DESCRIBED IN THIS DOCUMENT. MAXIM ALSO DOES NOT ASSUME LIABILITY FOR INTELLECTUAL PROPERTY INFRINGEMENT RELATED IN ANY MANNER TO USE OF INFORMATION, DEVICES, OR TECHNOLOGY DESCRIBED HEREIN OR OTHERWISE. The information contained within this document has been verified according to the general principles of electrical and mechanical engineering or registered trademarks of Maxim Integrated Products, Inc. All other product or service names are the property of their respective owners.