



Chipsmall Limited consists of a professional team with an average of over 10 year of expertise in the distribution of electronic components. Based in Hongkong, we have already established firm and mutual-benefit business relationships with customers from,Europe,America and south Asia,supplying obsolete and hard-to-find components to meet their specific needs.

With the principle of "Quality Parts,Customers Priority,Honest Operation,and Considerate Service",our business mainly focus on the distribution of electronic components. Line cards we deal with include Microchip,ALPS,ROHM,Xilinx,Pulse,ON,Everlight and Freescale. Main products comprise IC,Modules,Potentiometer,IC Socket,Relay,Connector.Our parts cover such applications as commercial,industrial, and automotives areas.

We are looking forward to setting up business relationship with you and hope to provide you with the best service and solution. Let us make a better world for our industry!



Contact us

Tel: +86-755-8981 8866 Fax: +86-755-8427 6832

Email & Skype: info@chipsmall.com Web: www.chipsmall.com

Address: A1208, Overseas Decoration Building, #122 Zhenhua RD., Futian, Shenzhen, China



FEATURES

- Low-cost fixture that permanently secures an iButton® to an object.
- Allows an iButton to be easily and permanently attached to an object using screws or rivets (F5 MicroCan®).
- Made from 13% glass filled Nylon 6/6

DESCRIPTION

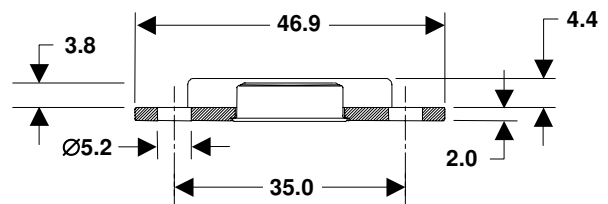
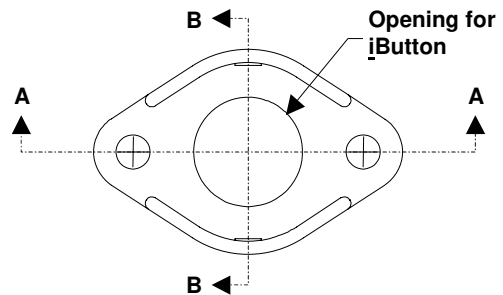
The DS9093S allows the user to permanently attach an iButton to an object with two screws, or rivets. The plastic plate is designed with an inset that accommodates the flange of the F5 package and allows for flush mounting. A protective wall is provided along the sides of the plate to reduce incidental damage to the iButton.

ORDERING INFORMATION

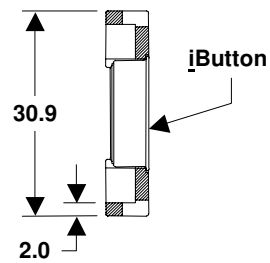
DS9093S+ Wall Mount for F5 iButton

+ Indicates lead-free compliance.

THROUGH-MOUNT FOR CONTAINERS



SECTION A-A



SECTION B-B

All dimensions are in mm.

iButton and MicroCan registered trademarks of Dallas Semiconductor.