



Chipsmall Limited consists of a professional team with an average of over 10 year of expertise in the distribution of electronic components. Based in Hongkong, we have already established firm and mutual-benefit business relationships with customers from,Europe,America and south Asia,supplying obsolete and hard-to-find components to meet their specific needs.

With the principle of “Quality Parts,Customers Priority,Honest Operation,and Considerate Service”,our business mainly focus on the distribution of electronic components. Line cards we deal with include Microchip,ALPS,ROHM,Xilinx,Pulse,ON,Everlight and Freescale. Main products comprise IC,Modules,Potentiometer,IC Socket,Relay,Connector.Our parts cover such applications as commercial,industrial, and automotives areas.

We are looking forward to setting up business relationship with you and hope to provide you with the best service and solution. Let us make a better world for our industry!



## Contact us

Tel: +86-755-8981 8866 Fax: +86-755-8427 6832

Email & Skype: info@chipsmall.com Web: www.chipsmall.com

Address: A1208, Overseas Decoration Building, #122 Zhenhua RD., Futian, Shenzhen, China



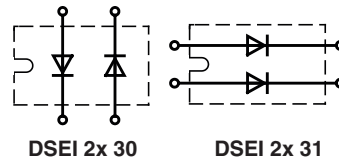
# Fast Recovery Epitaxial Diode (FRED)

$$I_{FAVM} = 2x\ 30\ A$$

$$V_{RRM} = 400/600\ V$$

$$t_{rr} = 35\ ns$$

$V_{RSM}$ V	$V_{RRM}$ V	Type
440	400	DSEI 2x 30-04C DSEI 2x 31-04C
640	600	DSEI 2x 30-06C DSEI 2x 31-06C


**miniBLOC, SOT-227 B**


E72873

Symbol	Test Conditions	Maximum Ratings (per diode)	
$I_{FRMS}$	$T_{VJ} = T_{VJM}$	70	A
$I_{FAVM}$ ①	$T_C = 85^\circ C$ ; rectangular, $d = 0.5$	30	A
$I_{FRM}$	$t_p < 10\ \mu s$ ; rep. rating, pulse width limited by $T_{VJM}$	375	A
$I_{FSM}$	$T_{VJ} = 45^\circ C$ ; $t = 10\ ms$ (50 Hz), sine	300	A
	$t = 8.3\ ms$ (60 Hz), sine	320	A
	$T_{VJ} = 150^\circ C$ ; $t = 10\ ms$ (50 Hz), sine	260	A
	$t = 8.3\ ms$ (60 Hz), sine	280	A
$I^2t$	$T_{VJ} = 45^\circ C$ ; $t = 10\ ms$ (50 Hz), sine	450	A <sup>2</sup> s
	$t = 8.3\ ms$ (60 Hz), sine	420	A <sup>2</sup> s
	$T_{VJ} = 150^\circ C$ ; $t = 10\ ms$ (50 Hz), sine	340	A <sup>2</sup> s
	$t = 8.3\ ms$ (60 Hz), sine	320	A <sup>2</sup> s
$T_{VJ}$		-40...+150	°C
$T_{VJM}$		150	°C
$T_{stg}$		-40...+150	°C
$P_{tot}$	$T_C = 25^\circ C$	100	W
$V_{ISOL}$	50/60 Hz, RMS $I_{ISOL} \leq 1\ mA$	2500	V~
$M_d$	Mounting torque	1.5/13	Nm/lb.in.
	Terminal connection torque (M4)	1.5/13	Nm/lb.in.
<b>Weight</b>		30	g

Symbol	Test Conditions	Characteristic Values (per diode)	
		typ.	max.
$I_R$	$T_{VJ} = 25^\circ C$ ; $V_R = V_{RRM}$		100 $\mu A$
	$T_{VJ} = 25^\circ C$ ; $V_R = 0.8 \cdot V_{RRM}$		50 $\mu A$
	$T_{VJ} = 125^\circ C$ ; $V_R = 0.8 \cdot V_{RRM}$		7 mA
$V_F$	$I_F = 30\ A$ ; $T_{VJ} = 150^\circ C$ $T_{VJ} = 25^\circ C$		1.4 V
			1.6 V
$V_{T0}$	For power-loss calculations only		1.01 V
$r_T$	$T_{VJ} = T_{VJM}$		7.1 mΩ
$R_{thJC}$	0.05		1.25 K/W
$R_{thCK}$		K/W	
$t_{rr}$	$I_F = 1\ A$ ; $-di/dt = 100\ A/\mu s$ ; $V_R = 30\ V$ ; $T_{VJ} = 25^\circ C$	35	50 ns
$I_{RM}$	$V_R = 350\ V$ ; $I_F = 30\ A$ ; $-di_F/dt = 240\ A/\mu s$ $L \leq 0.05\ \mu H$ ; $T_{VJ} = 100^\circ C$	10	11 A

①  $I_{FAVM}$  rating includes reverse blocking losses at  $T_{VJM}$ ,  $V_R = 0.8 V_{RRM}$ , duty cycle  $d = 0.5$   
Data according to IEC 60747

## Features

- International standard package miniBLOC (ISOTOP compatible)
- Isolation voltage 2500 V~
- 2 independent FRED in 1 package
- Planar passivated chips
- Very short recovery time
- Extremely low switching losses
- Low  $I_{FRM}$ -values
- Soft recovery behaviour

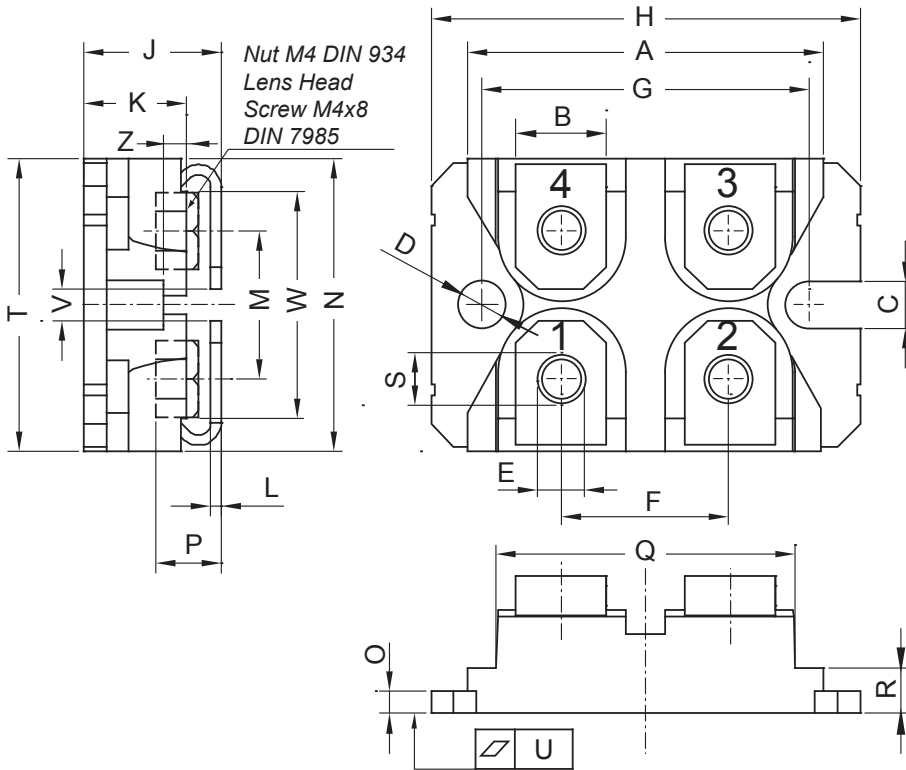
## Applications

- Antiparallel diode for high frequency switching devices
- Anti saturation diode
- Snubber diode
- Free wheeling diode in converters and motor control circuits
- Rectifiers in switch mode power supplies (SMPS)
- Inductive heating and melting
- Uninterruptible power supplies (UPS)
- Ultrasonic cleaners and welders

## Advantages

- High reliability circuit operation
- Low voltage peaks for reduced protection circuits
- Low noise switching
- Low losses
- Operating at lower temperature or space saving by reduced cooling

miniBLOC, SOT-227 B



Dim.	Millimeter		Inches	
	min	max	min	max
A	31.50	31.88	1.240	1.255
B	7.80	8.20	0.307	0.323
C	4.09	4.29	0.161	0.169
D	4.09	4.29	0.161	0.169
E	4.09	4.29	0.161	0.169
F	14.91	15.11	0.587	0.595
G	30.12	30.30	1.186	1.193
H	37.80	38.23	1.488	1.505
J	11.68	12.22	0.460	0.481
K	8.92	9.60	0.351	0.378
L	0.74	0.84	0.029	0.033
M	12.50	13.10	0.492	0.516
N	25.15	25.42	0.990	1.001
O	1.95	2.13	0.077	0.084
P	4.95	6.20	0.195	0.244
Q	26.54	26.90	1.045	1.059
R	3.94	4.42	0.155	0.167
S	4.55	4.85	0.179	0.191
T	24.59	25.25	0.968	0.994
U	-0.05	0.10	-0.002	0.004
V	3.20	5.50	0.126	0.217
W	19.81	21.08	0.780	0.830
Z	2.50	2.70	0.098	0.106



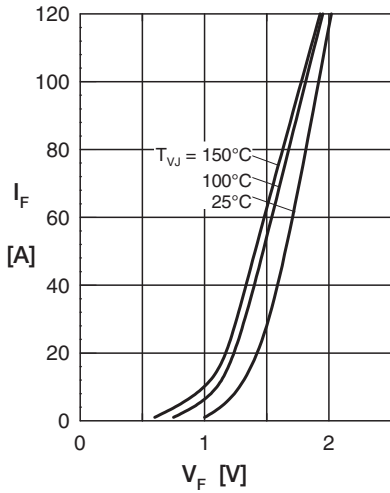


Fig. 1 Forward current vs. voltage drop

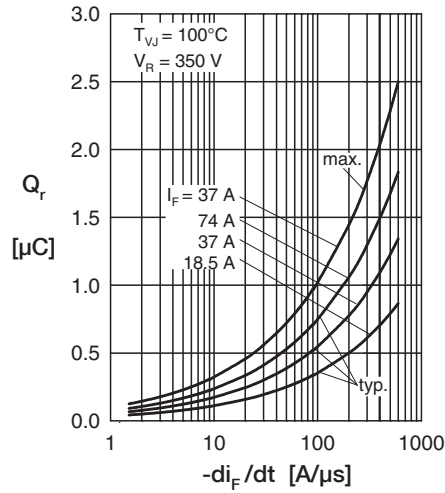


Fig. 2 Recovery charge versus  $-di_F/dt$

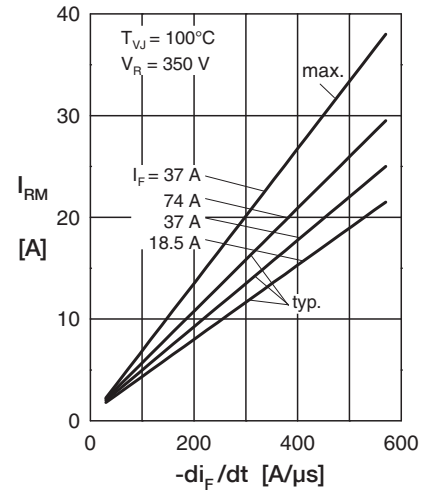


Fig. 3 Peak reverse current versus  $-di_F/dt$

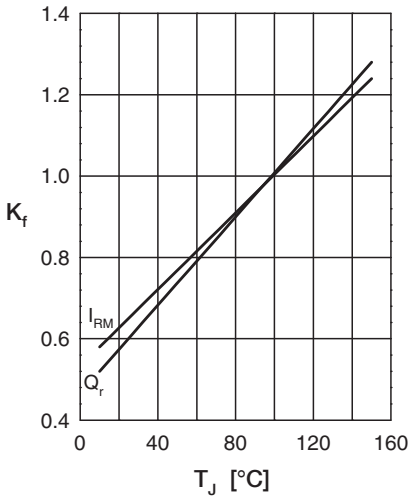


Fig. 4 Dynamic parameters vs. junction temperature

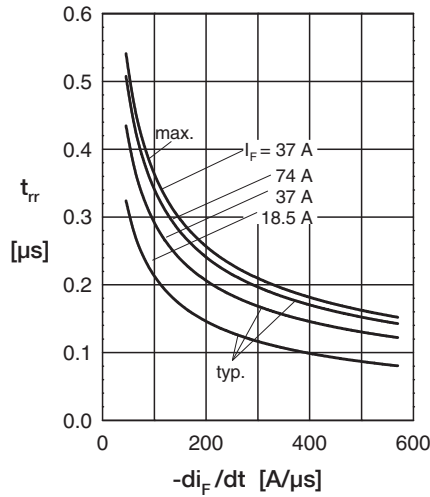


Fig. 5 Recovery time versus  $-di_F/dt$

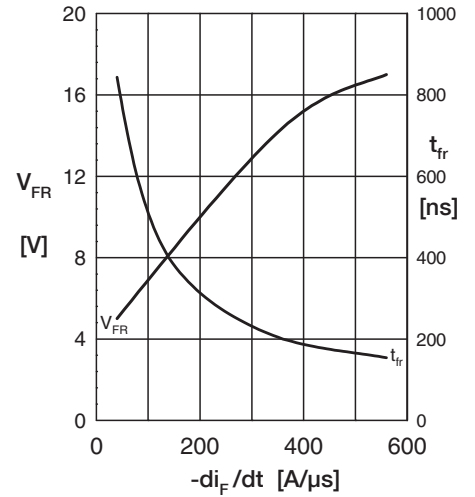


Fig. 6 Peak forward voltage versus  $-di_F/dt$

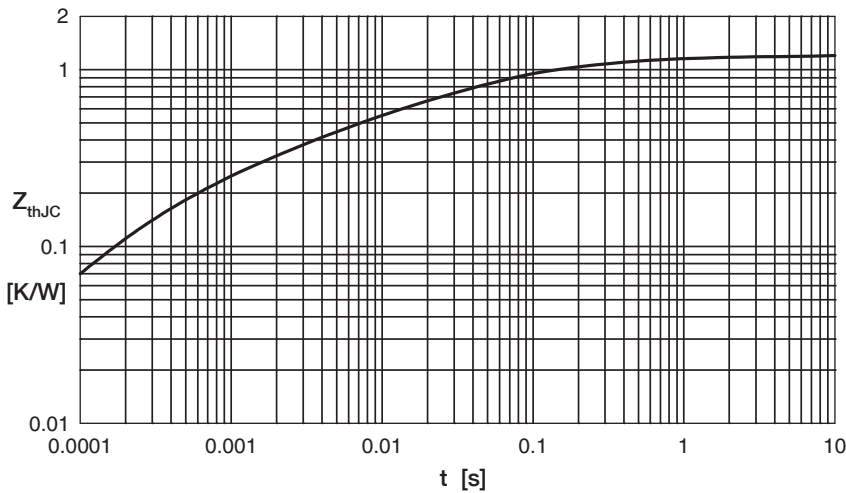


Fig. 7 Transient thermal impedance junction to case