



Chipsmall Limited consists of a professional team with an average of over 10 year of expertise in the distribution of electronic components. Based in Hongkong, we have already established firm and mutual-benefit business relationships with customers from,Europe,America and south Asia,supplying obsolete and hard-to-find components to meet their specific needs.

With the principle of “Quality Parts,Customers Priority,Honest Operation,and Considerate Service”,our business mainly focus on the distribution of electronic components. Line cards we deal with include Microchip,ALPS,ROHM,Xilinx,Pulse,ON,Everlight and Freescale. Main products comprise IC,Modules,Potentiometer,IC Socket,Relay,Connector.Our parts cover such applications as commercial,industrial, and automotives areas.

We are looking forward to setting up business relationship with you and hope to provide you with the best service and solution. Let us make a better world for our industry!



## Contact us

Tel: +86-755-8981 8866 Fax: +86-755-8427 6832

Email & Skype: info@chipsmall.com Web: www.chipsmall.com

Address: A1208, Overseas Decoration Building, #122 Zhenhua RD., Futian, Shenzhen, China



## HiPerFRED

$$V_{RRM} = 300 \text{ V}$$

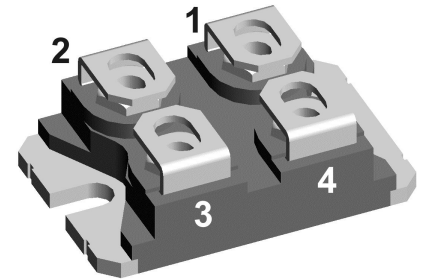
$$I_{FAV} = 2 \times 30 \text{ A}$$

$$t_{rr} = 30 \text{ ns}$$


High Performance Fast Recovery Diode  
Low Loss and Soft Recovery  
Parallel legs

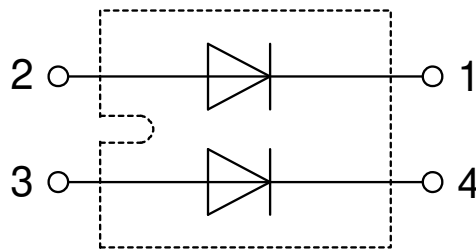
Part number

**DSEP2x31-03A**



Backside: isolated

 E72873



#### Features / Advantages:

- Planar passivated chips
- Very low leakage current
- Very short recovery time
- Improved thermal behaviour
- Very low  $I_{rm}$ -values
- Very soft recovery behaviour
- Avalanche voltage rated for reliable operation
- Soft reverse recovery for low EMI/RFI
- Low  $I_{rm}$  reduces:
  - Power dissipation within the diode
  - Turn-on loss in the commutating switch

#### Applications:

- Antiparallel diode for high frequency switching devices
- Antisaturation diode
- Snubber diode
- Free wheeling diode
- Rectifiers in switch mode power supplies (SMPS)
- Uninterruptible power supplies (UPS)

#### Package: SOT-227B (minibloc)

- Isolation Voltage: 3000 V~
- Industry standard outline
- RoHS compliant
- Epoxy meets UL 94V-0
- Base plate: Copper internally DCB isolated
- Advanced power cycling

#### Terms Conditions of usage:

The data contained in this product data sheet is exclusively intended for technically trained staff. The user will have to evaluate the suitability of the product for the intended application and the completeness of the product data with respect to his application. The specifications of our components may not be considered as an assurance of component characteristics. The information in the valid application- and assembly notes must be considered. Should you require product information in excess of the data given in this product data sheet or which concerns the specific application of your product, please contact your local sales office.

Due to technical requirements our product may contain dangerous substances. For information on the types in question please contact your local sales office.

Should you intend to use the product in aviation, in health or life endangering or life support applications, please notify. For any such application we urgently recommend

- to perform joint risk and quality assessments;

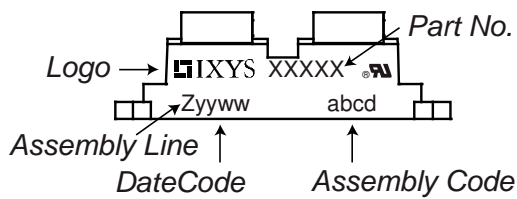
- the conclusion of quality agreements;

- to establish joint measures of an ongoing product survey, and that we may make delivery dependent on the realization of any such measures.

| Fast Diode |  |  |             | Ratings                      |      |      |               |
|------------|--|--|-------------|------------------------------|------|------|---------------|
| Symbol     | Definition                                   | Conditions   |             | min.                         | typ. | max. | Unit          |
| $V_{RSM}$  | max. non-repetitive reverse blocking voltage |  |             |                              |      | 300  | V             |
| $V_{RRM}$  | max. repetitive reverse blocking voltage     |  |             |                              |      | 300  | V             |
| $I_R$      | reverse current, drain current               | $V_R = 300\text{ V}$   |             | $T_{VJ} = 25^\circ\text{C}$  |      | 10   | $\mu\text{A}$ |
|            |  | $V_R = 300\text{ V}$   |             | $T_{VJ} = 150^\circ\text{C}$ |      | 1    | mA            |
| $V_F$      | forward voltage drop                         | $I_F = 30\text{ A}$  |             | $T_{VJ} = 25^\circ\text{C}$  |      | 1.23 | V             |
|            |  | $I_F = 60\text{ A}$  |             |                              |      | 1.40 | V             |
|            |  | $I_F = 30\text{ A}$  |             | $T_{VJ} = 150^\circ\text{C}$ |      | 0.90 | V             |
|            |  | $I_F = 60\text{ A}$  |             |                              |      | 1.10 | V             |
| $I_{FAV}$  | average forward current                      | $T_C = 105^\circ\text{C}$  | rectangular | $T_{VJ} = 150^\circ\text{C}$ |      | 30   | A             |
| $V_{FO}$   | threshold voltage                            | } for power loss calculation only  |             | $T_{VJ} = 150^\circ\text{C}$ |      | 0.71 | V             |
| $r_F$      | slope resistance                             |  |             |                              |      | 6.2  | m $\Omega$    |
| $R_{thJC}$ | thermal resistance junction to case          |  |             |                              |      | 1.15 | K/W           |
| $R_{thCH}$ | thermal resistance case to heatsink          |  |             |                              | 0.10 |      | K/W           |
| $P_{tot}$  | total power dissipation                      |  |             | $T_C = 25^\circ\text{C}$     |      | 100  | W             |
| $I_{FSM}$  | max. forward surge current                   | $t = 10\text{ ms}; (50\text{ Hz}), \text{ sine}; V_R = 0\text{ V}$                 |             | $T_{VJ} = 45^\circ\text{C}$  |      | 300  | A             |
| $C_J$      | junction capacitance                         | $V_R = 150\text{ V}$ $f = 1\text{ MHz}$  |             | $T_{VJ} = 25^\circ\text{C}$  |      | 66   | pF            |
| $I_{RM}$   | max. reverse recovery current                | } $I_F = 30\text{ A}; V_R = 150\text{ V}$<br>$-di_F/dt = 400\text{ A}/\mu\text{s}$ |             | $T_{VJ} = 25^\circ\text{C}$  |      | 10   | A             |
| $t_{rr}$   | reverse recovery time                        |  |             | $T_{VJ} = 100^\circ\text{C}$ |      | 12.5 | A             |
|            |  |  |             | $T_{VJ} = 25^\circ\text{C}$  |      | 30   | ns            |
|            |  | $T_{VJ} = 100^\circ\text{C}$   |             | 55                           | ns   |      |               |

| Package SOT-227B (minibloc) |  |                      |                                     | Ratings |      |      |  |
|-----------------------------|--|----------------------|-------------------------------------|---------|------|------|--|
| Symbol                      | Definition   | Conditions           | min.                                | typ.    | max. | Unit |  |
| $I_{RMS}$                   | RMS current  | per terminal         |                                     |         | 100  | A    |  |
| $T_{VJ}$                    | virtual junction temperature                                 |                      | -40                                 |         | 150  | °C   |  |
| $T_{op}$                    | operation temperature  |                      | -40                                 |         | 125  | °C   |  |
| $T_{stg}$                   | storage temperature  |                      | -40                                 |         | 150  | °C   |  |
| <b>Weight</b>               |  |                      |                                     |         | 30   | g    |  |
| $M_D$                       | mounting torque  |                      | 1.1                                 |         | 1.5  | Nm   |  |
| $M_T$                       | terminal torque  |                      | 1.1                                 |         | 1.5  | Nm   |  |
| $d_{Spp/App}$               | creepage distance on surface   striking distance through air | terminal to terminal | 10.5                                | 3.2     |      | mm   |  |
| $d_{Spb/Apb}$               |  | terminal to backside | 8.6                                 | 6.8     |      | mm   |  |
| $V_{ISOL}$                  | isolation voltage  | t = 1 second         |                                     |         | 3000 | V    |  |
|                             |  | t = 1 minute         | 50/60 Hz, RMS; $I_{ISOL} \leq 1$ mA |         | 2500 | V    |  |

### Product Marking

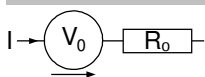


| Ordering | Ordering Number | Marking on Product | Delivery Mode | Quantity | Code No. |
|----------|-----------------|--------------------|---------------|----------|----------|
| Standard | DSEP2x31-03A    | DSEP2x31-03A       | Tube          | 10       | 473278   |

### Equivalent Circuits for Simulation

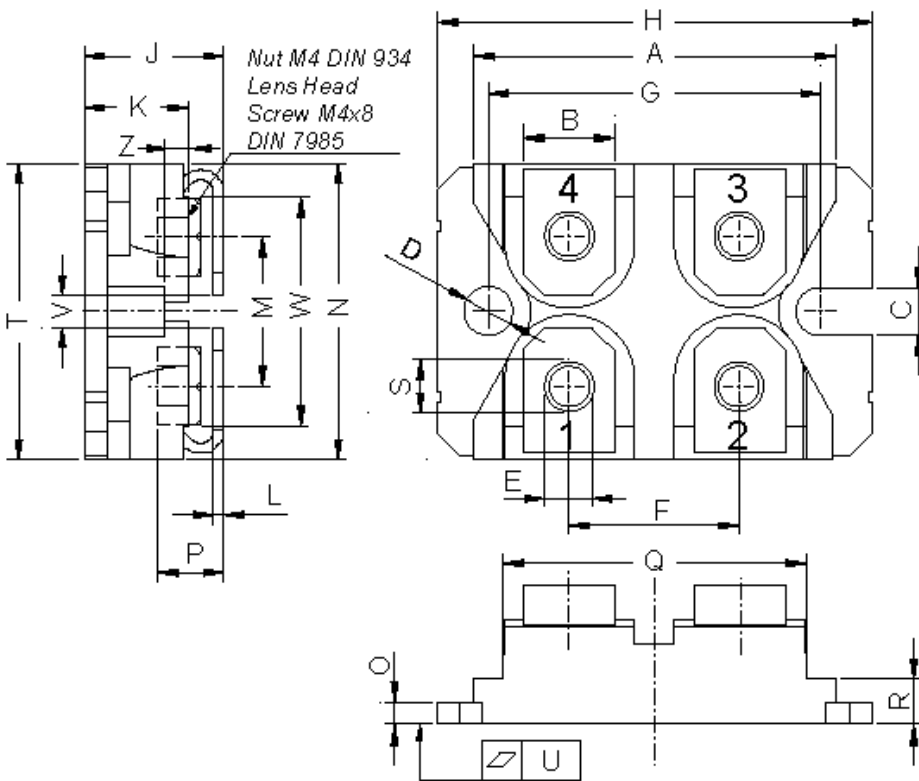
\* on die level

$T_{VJ} = 150$  °C

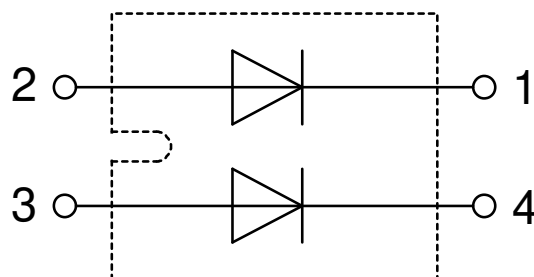


| Symbol       | Definition         | Value | Unit |
|--------------|--------------------|-------|------|
| $V_{0\ max}$ | threshold voltage  | 0.71  | V    |
| $R_{0\ max}$ | slope resistance * | 4.3   | mΩ   |

**Outlines SOT-227B (minibloc)**



| Dim. | Millimeter |       | Inches |       |
|------|------------|-------|--------|-------|
|      | min        | max   | min    | max   |
| A    | 31.50      | 31.88 | 1.240  | 1.255 |
| B    | 7.80       | 8.20  | 0.307  | 0.323 |
| C    | 4.09       | 4.29  | 0.161  | 0.169 |
| D    | 4.09       | 4.29  | 0.161  | 0.169 |
| E    | 4.09       | 4.29  | 0.161  | 0.169 |
| F    | 14.91      | 15.11 | 0.587  | 0.595 |
| G    | 30.12      | 30.30 | 1.186  | 1.193 |
| H    | 37.80      | 38.23 | 1.488  | 1.505 |
| J    | 11.68      | 12.22 | 0.460  | 0.481 |
| K    | 8.92       | 9.60  | 0.351  | 0.378 |
| L    | 0.74       | 0.84  | 0.029  | 0.033 |
| M    | 12.50      | 13.10 | 0.492  | 0.516 |
| N    | 25.15      | 25.42 | 0.990  | 1.001 |
| O    | 1.95       | 2.13  | 0.077  | 0.084 |
| P    | 4.95       | 6.20  | 0.195  | 0.244 |
| Q    | 26.54      | 26.90 | 1.045  | 1.059 |
| R    | 3.94       | 4.42  | 0.155  | 0.167 |
| S    | 4.55       | 4.85  | 0.179  | 0.191 |
| T    | 24.59      | 25.25 | 0.968  | 0.994 |
| U    | -0.05      | 0.10  | -0.002 | 0.004 |
| V    | 3.20       | 5.50  | 0.126  | 0.217 |
| W    | 19.81      | 21.08 | 0.780  | 0.830 |
| Z    | 2.50       | 2.70  | 0.098  | 0.106 |





## Fast Diode

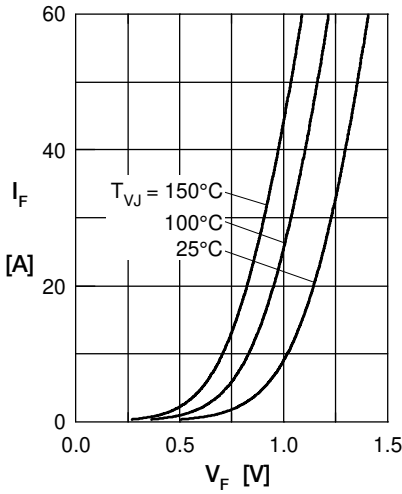


Fig. 1 Forward current  $I_F$  versus  $V_F$

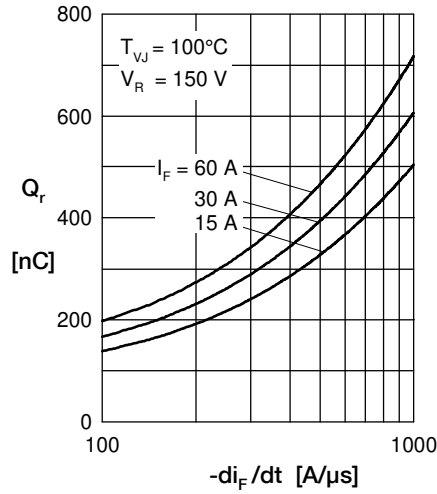


Fig. 2 Typ. reverse recovery charge  $Q_r$  versus  $-di_F/dt$

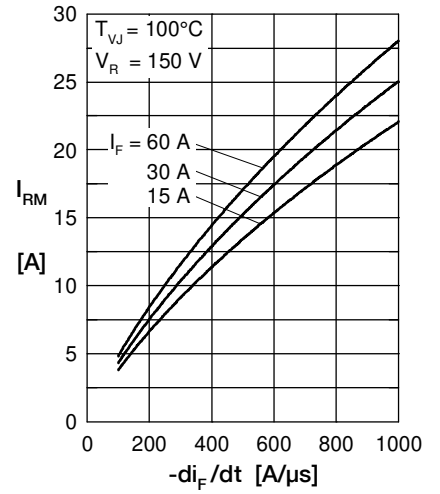


Fig. 3 Typ. peak reverse current  $I_{RM}$  versus  $-di_F/dt$

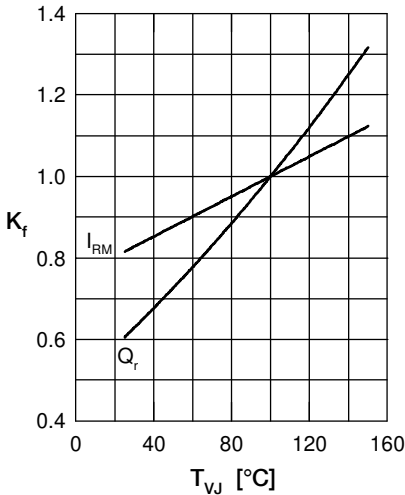


Fig. 4 Typ. dynamic parameters  $Q_r, I_{RM}$  versus  $T_{VJ}$

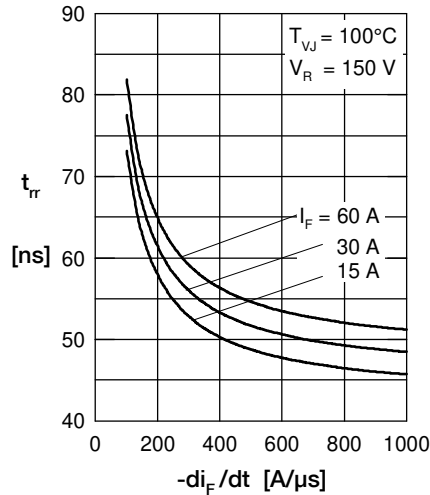


Fig. 5 Typ. recovery time  $t_{tr}$  versus  $-di_F/dt$

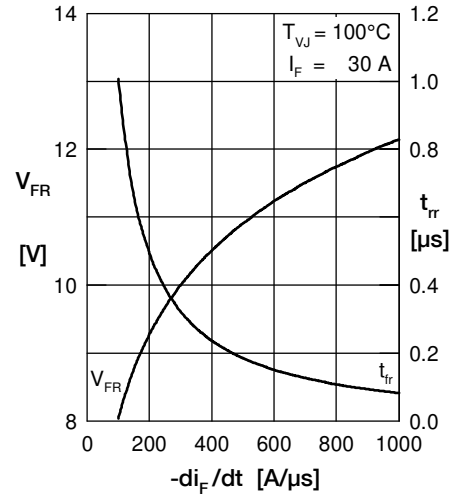


Fig. 6 Typ. peak forward voltage  $V_{FR}$  and  $t_{tr}$  versus  $di_F/dt$

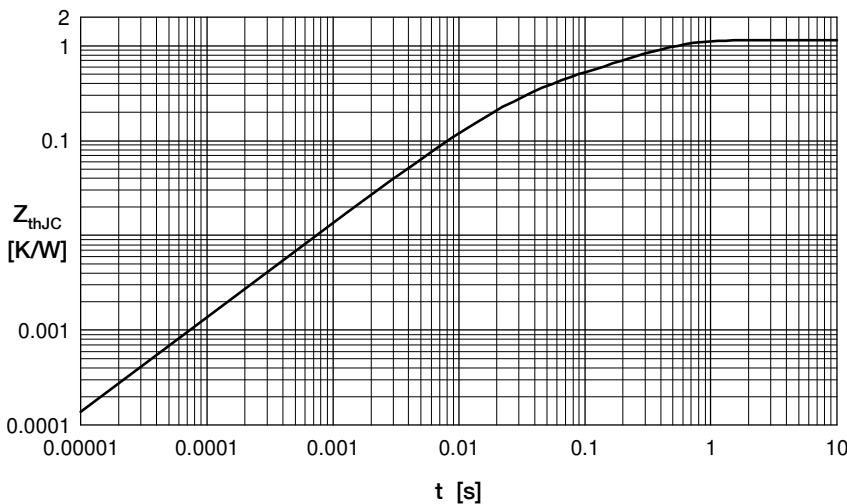


Fig. 7 Transient thermal resistance junction to case

Constants for  $Z_{thJC}$  calculation ...A:

| i | $R_{thi}$ (K/W) | $t_i$ (s) |
|---|-----------------|-----------|
| 1 | 0.465           | 0.0052    |
| 2 | 0.179           | 0.0003    |
| 3 | 0.256           | 0.0397    |

Constants for  $Z_{thJC}$  calculation ...AR:

| i | $R_{thi}$ (K/W) | $t_i$ (s) |
|---|-----------------|-----------|
| 1 | 0.368           | 0.0052    |
| 2 | 0.1417          | 0.0003    |
| 3 | 0.0295          | 0.0004    |
| 4 | 0.5604          | 0.0092    |