



Chipsmall Limited consists of a professional team with an average of over 10 year of expertise in the distribution of electronic components. Based in Hongkong, we have already established firm and mutual-benefit business relationships with customers from,Europe,America and south Asia,supplying obsolete and hard-to-find components to meet their specific needs.

With the principle of "Quality Parts,Customers Priority,Honest Operation,and Considerate Service",our business mainly focus on the distribution of electronic components. Line cards we deal with include Microchip,ALPS,ROHM,Xilinx,Pulse,ON,Everlight and Freescale. Main products comprise IC,Modules,Potentiometer,IC Socket,Relay,Connector.Our parts cover such applications as commercial,industrial, and automotives areas.

We are looking forward to setting up business relationship with you and hope to provide you with the best service and solution. Let us make a better world for our industry!



Contact us

Tel: +86-755-8981 8866 Fax: +86-755-8427 6832

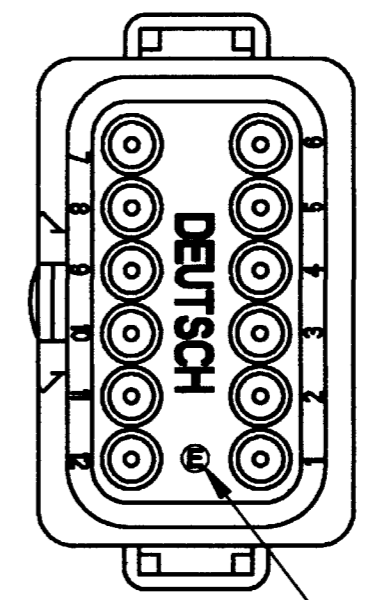
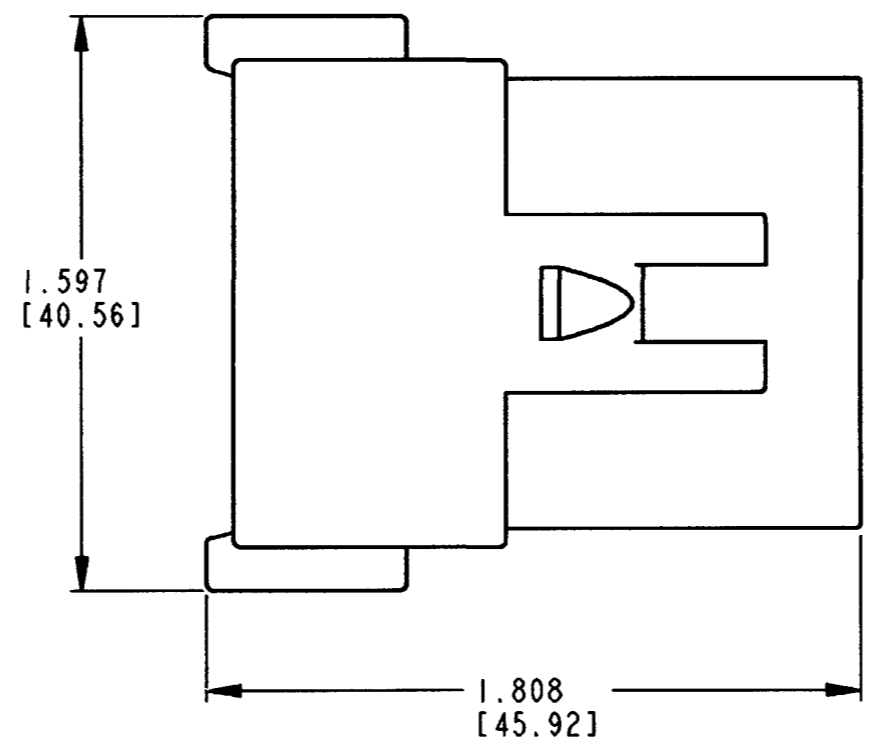
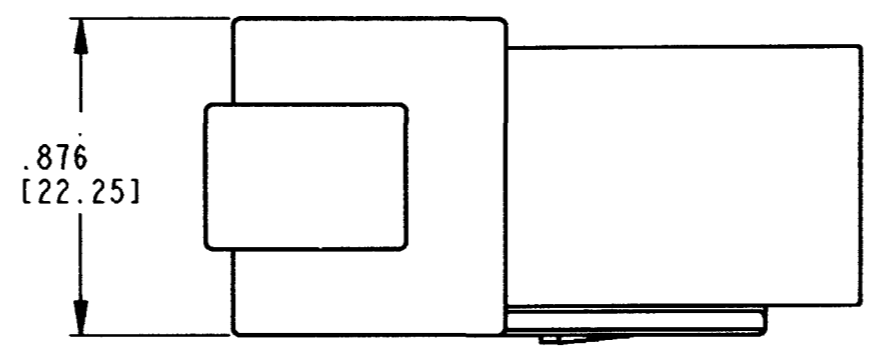
Email & Skype: info@chipsmall.com Web: www.chipsmall.com

Address: A1208, Overseas Decoration Building, #122 Zhenhua RD., Futian, Shenzhen, China



REV
NC DT04-12P*-C015

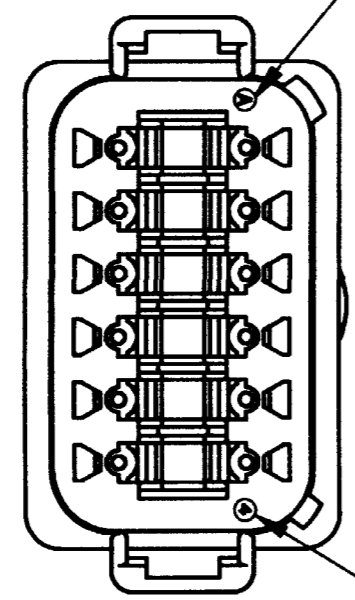
REVISIONS			
SYM	DESCRIPTION	DATE	APPROVED
NC	NEW RELEASE/REPLACES PREVIOUS RELEASE PER E.O. P18766	2-21-05	RD



-E- SYMBOL DESIGNATES
REDUCED WIRE SEAL

CONTACT SIZE	MIN. INSUL O.D.	MAX. INSUL O.D.	WIRE RANGE [mm ²]
16	.053 [1.35]	.120 [3.05]	14-20 AWG [2.0-0.5]

DATE CODE: MONTH IS REPRESENTED
BY SEQUENTIAL ALPHA
CHARACTERS.
EX. A = JANUARY



DATE CODE: YEAR IS REPRESENTED
BY LAST NUMERICAL
DIGIT.
EX: 4 = 2004

4. THIS RECEPTACLE MATES WITH THE DT06-12S*-**** PLUG (**** = ALL MODIFICATIONS).
CONSULT FACTORY FOR MODIFICATIONS.

3. FOR CONTACTS AND WIRE PERFORMANCE AND APPLICATION CHARACTERISTICS
SEE ENVELOPE DRAWING 0425-015-0000 AND 0425-017-0000.

2. DIMENSIONS ARE ±.025 [.64] UNLESS OTHERWISE SPECIFIED.

1. DIMENSIONS ARE IN INCHES [MILLIMETERS].
NOTES:

SIGNATURE & DATE	
DR	X. SANCHEZ 04FEB05
CHK	R. M... 2/18/05
PE	[Signature]
APPD	S... 2-15-05
SCALE	NONE
WT	

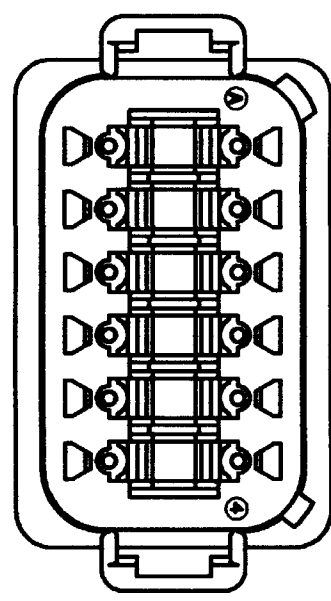
12 WAY RECEPTACLE
-C015 MOD.
D.T. SERIES

ENVELOPE

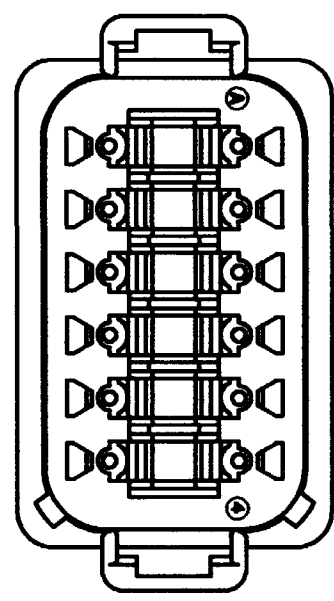
CP	MATL. CODE
The Deutsch Company DEUTSCH I.P.D. 3850 INDUSTRIAL AVE. HEMET, CALIF. 92545	
B	DT04-12P*-C015
DWG SIZE	CODE 11139 SHEET 1 OF 2

REV NC	DT04-12P*-C015	REVISIONS		
SYM	DESCRIPTION	DATE	APPROVED	
NC	NEW RELEASE/REPLACES PREVIOUS RELEASE PER E.O. P18766			
		2-21-05	RDR	

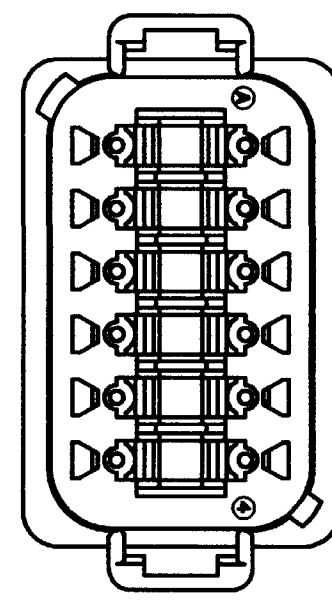
PART NO.
DT04-12PA-C015
KEY ARR. -A-
COLOR: GRAY



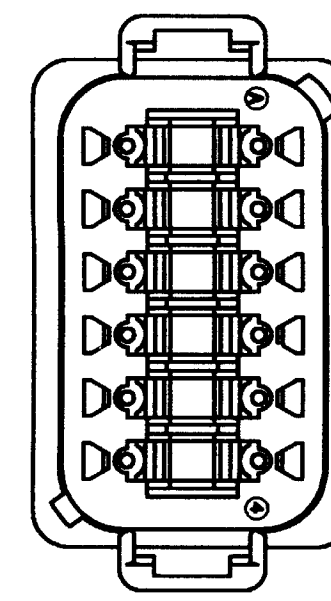
PART NO.
DT04-12PB-C015
KEY ARR. -B-
COLOR: BLACK



PART NO.
DT04-12PC-C015
KEY ARR. -C-
COLOR: GREEN



PART NO.
DT04-12PD-C015
KEY ARR. -D-
COLOR: BROWN



NOTES:

SIGNATURE & DATE		12 WAY RECEPTACLE -C015 MOD. D.T. SERIES	CP	MATL. CODE		
DR	X. SANCHEZ 04FEB05		The Deutsch Company DEUTSCH I. P. D. 3850 INDUSTRIAL AVE. HEMET, CALIF. 92545			
CHK	R. Morgan 2/16/05		B	DT04-12P*-C015		
PE	John Johnson 2/16/05			DWG SIZE	CODE 11139	SHEET 2 OF 2
APPD	S. Bland 2-15-05					
SCALE	NONE	WT				

ENVELOPE