



Chipsmall Limited consists of a professional team with an average of over 10 year of expertise in the distribution of electronic components. Based in Hongkong, we have already established firm and mutual-benefit business relationships with customers from,Europe,America and south Asia,supplying obsolete and hard-to-find components to meet their specific needs.

With the principle of "Quality Parts,Customers Priority,Honest Operation,and Considerate Service",our business mainly focus on the distribution of electronic components. Line cards we deal with include Microchip,ALPS,ROHM,Xilinx,Pulse,ON,Everlight and Freescale. Main products comprise IC,Modules,Potentiometer,IC Socket,Relay,Connector.Our parts cover such applications as commercial,industrial, and automotives areas.

We are looking forward to setting up business relationship with you and hope to provide you with the best service and solution. Let us make a better world for our industry!



Contact us

Tel: +86-755-8981 8866 Fax: +86-755-8427 6832

Email & Skype: info@chipsmall.com Web: www.chipsmall.com

Address: A1208, Overseas Decoration Building, #122 Zhenhua RD., Futian, Shenzhen, China



Digital transistors (Includes resistors)

DTD133H□

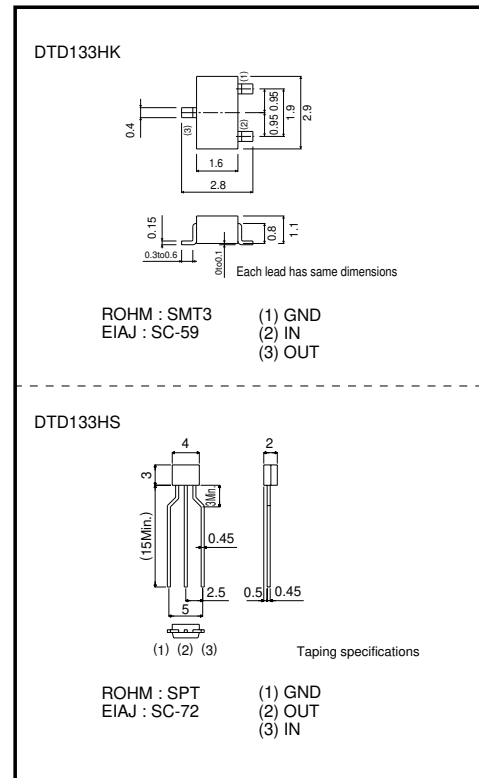
●Features

- 1) A built-in bias resistor allows inverter circuit configuration without external resistors for input (see equivalent circuit diagram).
- 2) The bias resistor consists of a thin-film resistor which is completely isolated, providing the capability to negative-bias the input, and avoiding parasitic effects.
- 3) Operation starts by simply setting On/Off conditions, simplifying the design of equipment using the transistors.
- 4) High packing density.

●Absolute maximum ratings (Ta=25°C)

Parameter	Symbol	Limits	Unit
Supply voltage	V _{CC}	50	V
Input voltage	V _I	-6~+20	V
Output current	I _C	500	mA
Power dissipation	P _d	200	mW
		300	
Junction temperature	T _J	150	°C
Storage temperature	T _{stg}	-55~+150	°C

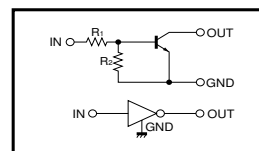
●External dimensions (Units : mm)



●Package, marking, and packaging specifications

Part No.	DTD133HK	DTD133HS
Package	SMT3	SPT
Marking	G08	-
Packaging code	T146	TP
Basic ordering unit (pieces)	3000	5000

●Equivalent circuit



●Electrical characteristics (Ta=25°C)

Parameter	Symbol	Min.	Typ.	Max.	Unit	Conditions
Input voltage	V _{I(off)}	-	-	0.5	V	V _{CC} =5V, I _C =100μA
	V _{I(on)}	2.0	-	-	V	V _O =0.3V, I _C =20mA
Output voltage	V _{O(on)}	-	0.1	0.3	V	I _C =50mA, I _I =2.5mA
Input current	I _I	-	-	2.4	mA	V _I =5V
Output current	I _{O(off)}	-	-	0.5	μA	V _{CC} =50V, V _I =0V
DC current gain	G _I	56	-	-	-	I _C =50mA, V _O =5V
Input resistance	R ₁	-	3.3	-	kΩ	-
Resistance ratio	R ₂ /R ₁	2.4	3.0	3.7	-	-
Transition frequency	f _T	-	200	-	MHz	V _{CE} =10V, I _E =-5mA, f=100MHz

*Transition frequency of the device.

Transistors

●Electrical characteristics curves

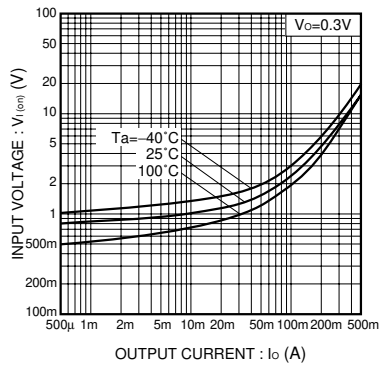


Fig.1 Input voltage vs. output current (ON characteristics)

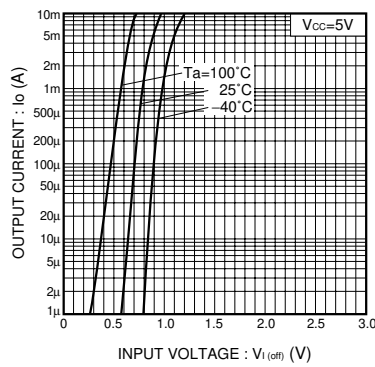


Fig.2 Output current vs. input voltage (OFF characteristics)

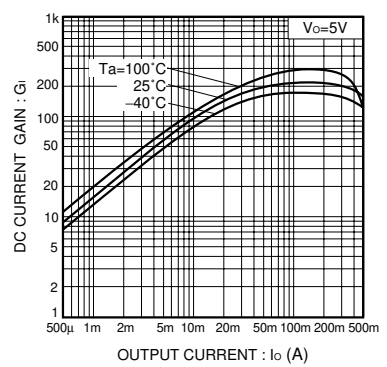


Fig.3 DC current gain vs. output current characteristics

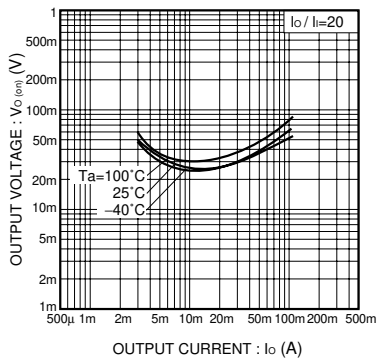


Fig.4 Output voltage vs. output current characteristics