



Chipsmall Limited consists of a professional team with an average of over 10 year of expertise in the distribution of electronic components. Based in Hongkong, we have already established firm and mutual-benefit business relationships with customers from,Europe,America and south Asia,supplying obsolete and hard-to-find components to meet their specific needs.

With the principle of "Quality Parts,Customers Priority,Honest Operation,and Considerate Service",our business mainly focus on the distribution of electronic components. Line cards we deal with include Microchip,ALPS,ROHM,Xilinx,Pulse,ON,Everlight and Freescale. Main products comprise IC,Modules,Potentiometer,IC Socket,Relay,Connector.Our parts cover such applications as commercial,industrial, and automotives areas.

We are looking forward to setting up business relationship with you and hope to provide you with the best service and solution. Let us make a better world for our industry!



Contact us

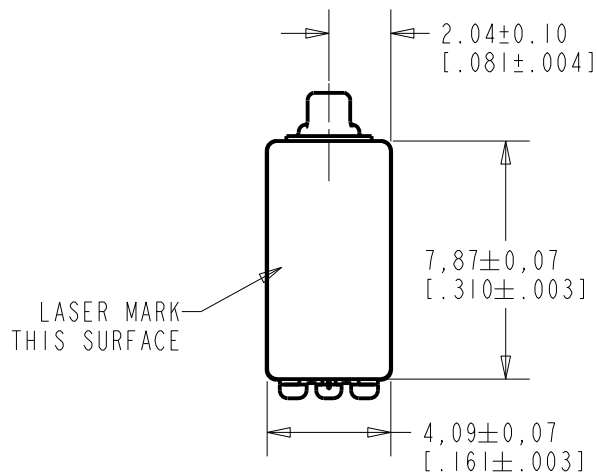
Tel: +86-755-8981 8866 Fax: +86-755-8427 6832

Email & Skype: info@chipsmall.com Web: www.chipsmall.com

Address: A1208, Overseas Decoration Building, #122 Zhenhua RD., Futian, Shenzhen, China



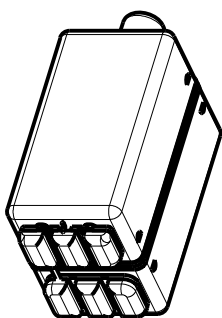
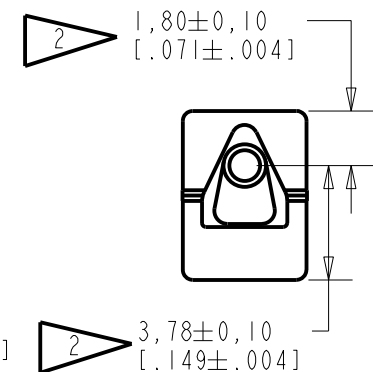
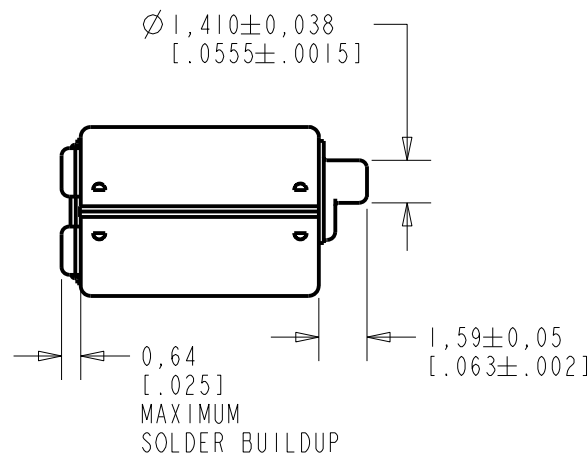
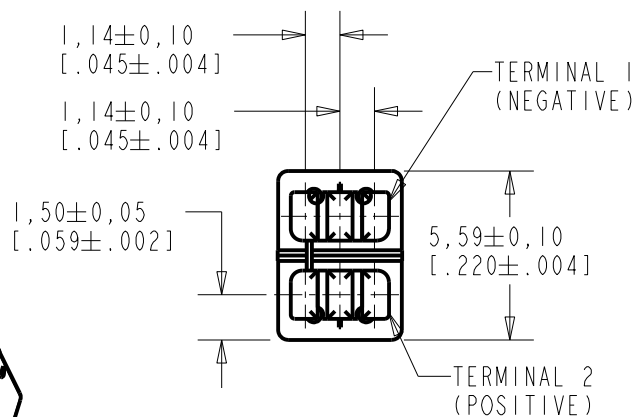
DTEC-31116-000
SHT 1.1



NOTES:

1. A POSITIVE GOING VOLTAGE AT TERMINAL 2, RELATIVE TO TERMINAL 1, CAUSES A DECREASE IN PRESSURE AT THE SOUND OUTLET.

2. LOCATED FROM TWO SURFACES FOR CUSTOMER CONVENIENCE. ONLY APPLICABLE FROM ONE SURFACE, NOT TO BE USED TOGETHER. HORIZONTAL LOCATION FOR TERMINAL CENTERED TO ±0.17 [.007].



RED CONTROLLED

NOMINAL WEIGHT
.71 GRAMS

DIMENSIONS IN MILLIMETERS [INCHES]

KNOWLES ELECTRONICS
ITASCA, ILLINOIS U.S.A.

Revision	C.O. #	Implementation Date	RELEASE LEVEL	REVISION
			Active	A
A	C10111188	4-6-10		
SCALE: 4:1				
DO NOT SCALE DRAWING			DR. BY	DATE
TITLE: RECEIVER			SDZ	4-6-10
			DTEC-31116-000	
OUTLINE DRAWING			GJP	4-6-10
			SHT 1.1	
			GJP	4-6-10

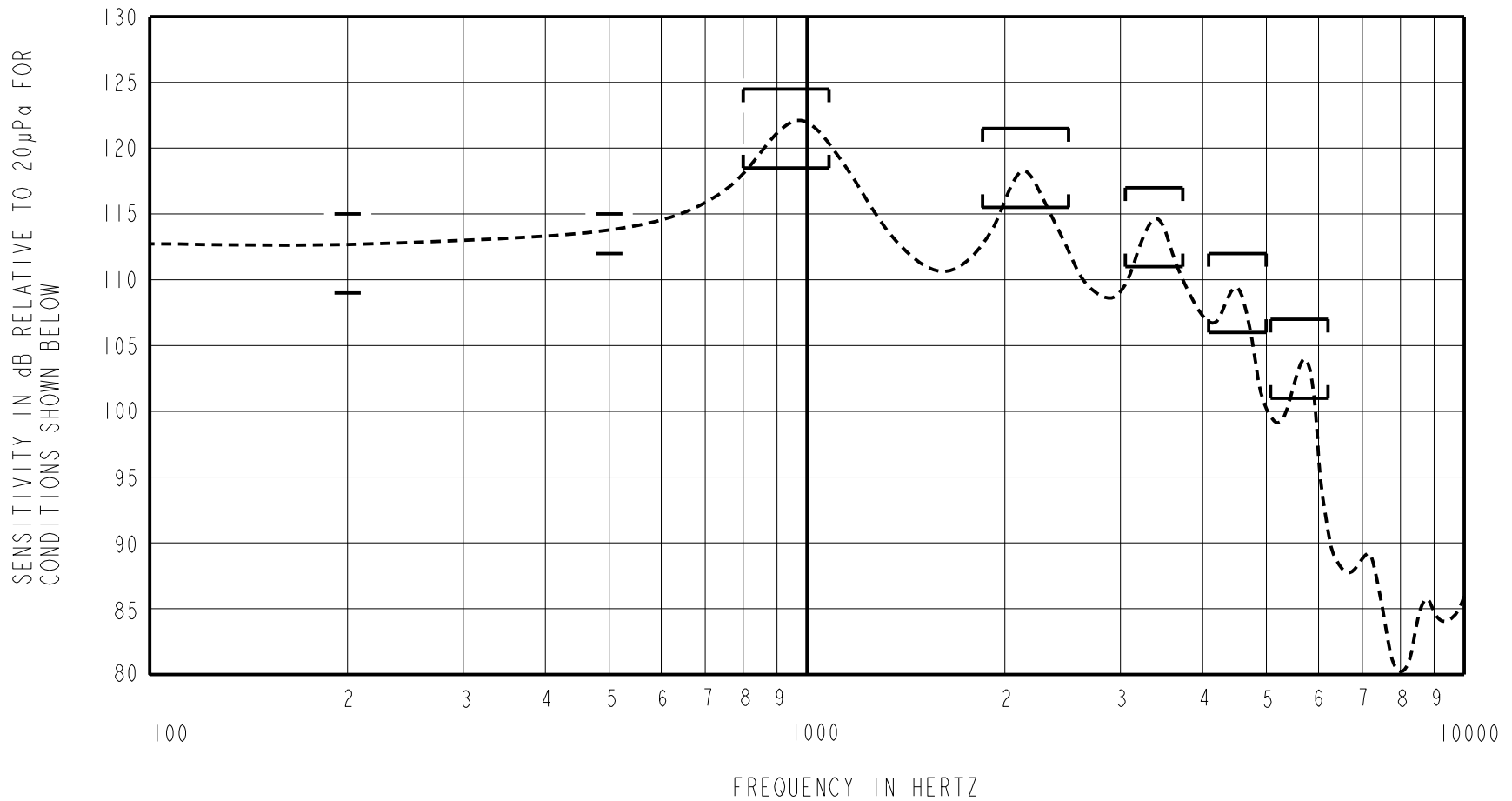
THE DTEC-31116-000 IS A PAIR OF BALANCED ARMATURE RECEIVERS INTENDED FOR USE IN BTE HEARING AIDS. IT HAS A LOW DCR TO IMPEDANCE RATIO, HAS THE CENTER TERMINAL CONNECTED TO CASE AND IS THE SAME SIZE AS AN EF RECEIVER

NO DAMPING

DTEC-31116-000
SHEET 2.1

NOTE: SPECIFICATIONS FOLLOWED BY AN ASTERISK (*) ARE 100% TESTED.

CONSTANT VOLTAGE DRIVE CONDITIONS



ACOUSTICAL

SENSITIVITY*
DEVICE WILL PRODUCE THE SPL LISTED BELOW UNDER TEST CONDITIONS DESCRIBED IN TABLE 3. NOMINAL SENSITIVITY AT 500 Hz IS dB RELATIVE TO 20µPa. ALL OTHER VALUES IN dB RELATIVE TO THE SENSITIVITY AT 500 Hz.

FREQUENCY (Hz)	MINIMUM	NOMINAL	MAXIMUM
200	-4.5	-1.5	+1.5
500	-1.5	+113.5	+1.5
800-1080	+5.0	+8.0	+11.0
1850-2500	+2.0	+5.0	+8.0
3050-3730	-2.5	+0.5	+3.5
4085-4995	-7.5	-4.5	-1.5
5075-6205	-14.0	-11.0	-8.0

TABLE 1

TOTAL HARMONIC DISTORTION*
DEVICE WILL NOT EXCEED TOTAL HARMONIC DISTORTION LEVELS LISTED BELOW.

FREQUENCY (Hz)	AC DRIVE (V rms)	DC BIAS (mA)	LIMIT (%)
315	0.164	0	5
470	0.164	0	5
470	0.328	0	10

TABLE 2

TEST CONDITIONS

NOMINAL SOURCE VOLTAGE	0.164 V rms, TO DELIVER 0.70 mVA AT 500 Hz
SOURCE IMPEDANCE	<1 Ohm
TUBING	8mm X 1mm ID + 28mm X 1.5mm ID EAR HOOK SIMULATOR + 25mm X 2mm ID TUBE + 18mm X 3mm ID TUBE
COUPLER CAVITY	2 cm ³ , SIMULATED ANSI S3.7 TYPE HA-3 (IEC 60318-5)

TABLE 3

RED CONTROLLED

ELECTRICAL

DC RESISTANCE	22 OHMS ± 10% *
IMPEDANCE @ 500 Hz	38 OHMS ± 15% *
INDUCTANCE @ 500 Hz	16 mH TYPICAL
CAPACITANCE @ 10 MHz	2 pF TYPICAL

TABLE 4

ISOLATION: CASE WILL BE ELECTRICALLY ISOLATED FROM THE COIL CIRCUIT.*

MECHANICAL

PORT LOCATION: 12C
SOLDER TYPE: SAC305

TEMPERATURE

OPERATING: SENSITIVITY WILL NOT VARY MORE THAN +1/-3 dB FROM -17°C TO 63°C
STORAGE: -40°C TO 63°C

KNOWLES ELECTRONICS
ITASCA, ILLINOIS U.S.A.

Revision	C.O. #	Implementation Date	RELEASE LEVEL	REVISION
			Active	A
A	C10111188	4-6-10		
WHEN TEST LIMITS ARE USED TO ESTABLISH INCOMING INSPECTION ACCEPTANCE/REJECTION CRITERIA, CORRELATION OF TEST EQUIPMENT WITH KNOWLES IS ALSO REQUIRED FOR ELIMINATION OF EQUIPMENT AND TEST METHOD VARIATION			DR. BY	DATE
TITLE: RECEIVER PERFORMANCE SPECIFICATION			SDZ	4-6-10
			DTEC-31116-000	
			GJP	4-6-10
			APP. BY	DATE
			GJP	4-6-10
			SHT 2.1	


DTEC-31116-000

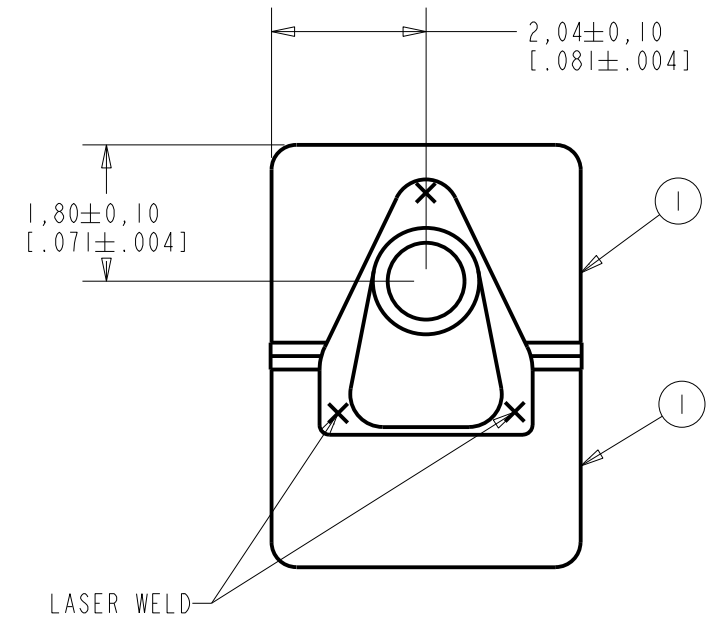
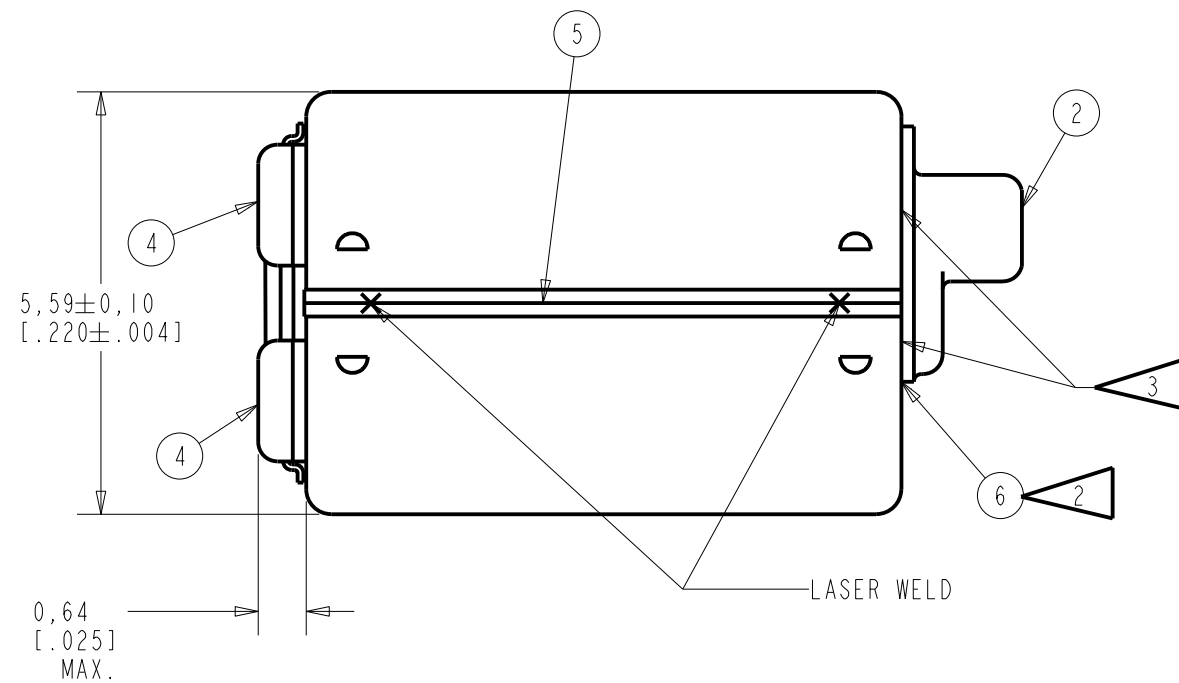
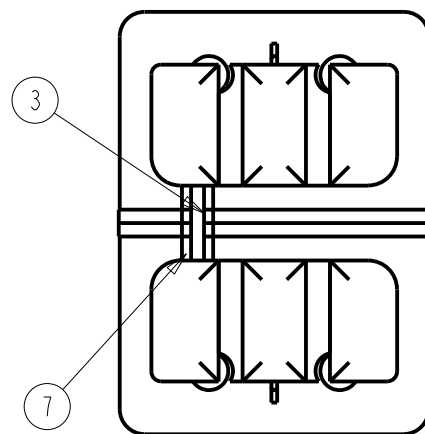
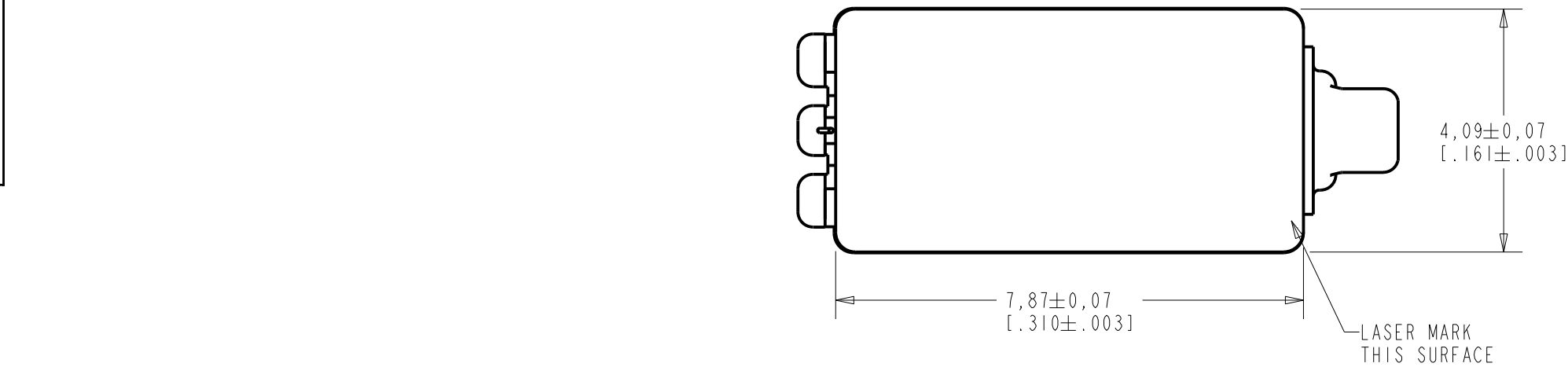
PROPRIETARY NOTE: THIS DOCUMENT CONTAINS INFORMATION WHICH IS THE PROPRIETARY PROPERTY OF KNOWLES ELECTRONICS, LLC. OR ITS AFFILIATED ENTITIES. IT IS ISSUED IN STRICT CONFIDENCE AND SHALL NOT BE REPRODUCED, COPIED, USED, OR DISCLOSED TO ANY THIRD PARTY PARTIALLY OR WHOLLY IN ANY MANNER WITHOUT PRIOR WRITTEN PERMISSION OF, AND MUST BE RETURNED UPON REQUEST BY, KNOWLES ELECTRONICS, LLC.

NOTES:

1. ITEM NUMBERS (SHOWN THUS ) CORRESPOND TO ITEM NUMBER ON BILL OF MATERIAL.

 2 AIRTIGHT SEAL ALL AROUND.

 3 0,03 [.001] MAX. GAP ALLOWED BETWEEN ITEMS (1) & (2).



DIMENSIONS IN MILLIMETERS [INCHES]

RELEASE LEVEL		REVISION	
Active		A	
SCALE: 10:1		DO NOT SCALE DRAWING	
DR. BY	DATE	DR. BY	DATE
SDZ	4-6-10	GJP	4-6-10
CH. BY	DATE	APP. BY	DATE
GJP	4-6-10	GJP	4-6-10
TITLE		SHEET	
RECEIVER DUAL		DTEC-31116-000 3.1	

MATERIAL		SEE BILL OF MATERIAL		FINISH - - -	
REF.	A	C1011188		UNLESS OTHERWISE SPECIFIED, DIMENSIONS ARE IN INCHES	
NONE		RED CONTROLLED		THIRD ANGLE PROJECTION	

KNOWLES ELECTRONICS
ITASCA, ILLINOIS U.S.A.

DTEC-31116-000		KNOWLES ELECTRONICS		DTEC-31116-000	
Sheet 4.1		ITASCA, ILLINOIS U.S.A.		Sheet 4.1	
Dr.	By SDZ	Date 4-6-10	RECEIVER DUAL	Revision	
Ch.	GJP	4-6-10		A	
App.	GJP	4-6-10		Release Level	
				Active	
COL. 1		2	3	4	
Part or Dwg. no.		Tot. Req.	Nomenclature:	Applicable Specs or Remarks	Item No. Line No.
TEC-31118-000		2	RECEIVER ASSEMBLY		1 1
BI-013		1	TUBE		2 2
103-074		A/R	WIRE		3 3
285-007-001		A/R	SOLDER LEAD FREE		4 4
13-092-130101		A/R	CEMENT		5 5
13-092-130111E		A/R	CEMENT		6 6
13-092-130109		A/R	CEMENT		7 7



REVISION
 A c.o. C1011188

RED CONTROLLED

DTEC-31116-000
 Sheet 4.1

PROPRIETARY NOTE: THIS DOCUMENT CONTAINS INFORMATION WHICH IS THE PROPRIETARY PROPERTY OF KNOWLES ELECTRONICS, LLC. OR ITS AFFILIATED ENTITIES. IT IS ISSUED IN STRICT CONFIDENCE AND SHALL NOT BE REPRODUCED, COPIED, USED, OR DISCLOSED TO ANY THIRD PARTY PARTIALLY OR WHOLLY IN ANY MANNER WITHOUT PRIOR WRITTEN PERMISSION OF, AND MUST BE RETURNED UPON REQUEST BY, KNOWLES ELECTRONICS, LLC.

REF: 0

PRODUCTION TEST INFORMATION

SOFTWARE REVISION PXI FCART	SOFTWARE 1.73 MIN.
HARDWARE REVISION PXI FCART	KE 1065C.008G MIN.

RED CONTROLLED

Revision	C.O. #	Implementation Date	RELEASE LEVEL	REVISION
A	C10111188	4-6-10	Active	A

WHEN TEST LIMITS ARE USED TO ESTABLISH INCOMING INSPECTION ACCEPTANCE/REJECTION CRITERIA, CORRELATION OF TEST EQUIPMENT WITH KNOWLES IS ALSO REQUIRED FOR ELIMINATION OF EQUIPMENT AND TEST METHOD VARIATION	DR. BY	DATE
	SDZ	4-6-10
	CK. BY	DATE
	GJP	4-6-10
TITLE:	RECEIVER	DTEC-31116-000
	PERFORMANCE SPECIFICATION	SHT 5.1
		APP. BY
		GJP
		DATE
		4-6-10

KNOWLES ELECTRONICS
ITASCA, ILLINOIS U.S.A.