



Chipsmall Limited consists of a professional team with an average of over 10 year of expertise in the distribution of electronic components. Based in Hongkong, we have already established firm and mutual-benefit business relationships with customers from,Europe,America and south Asia,supplying obsolete and hard-to-find components to meet their specific needs.

With the principle of “Quality Parts,Customers Priority,Honest Operation,and Considerate Service”,our business mainly focus on the distribution of electronic components. Line cards we deal with include Microchip,ALPS,ROHM,Xilinx,Pulse,ON,Everlight and Freescale. Main products comprise IC,Modules,Potentiometer,IC Socket,Relay,Connector.Our parts cover such applications as commercial,industrial, and automotives areas.

We are looking forward to setting up business relationship with you and hope to provide you with the best service and solution. Let us make a better world for our industry!



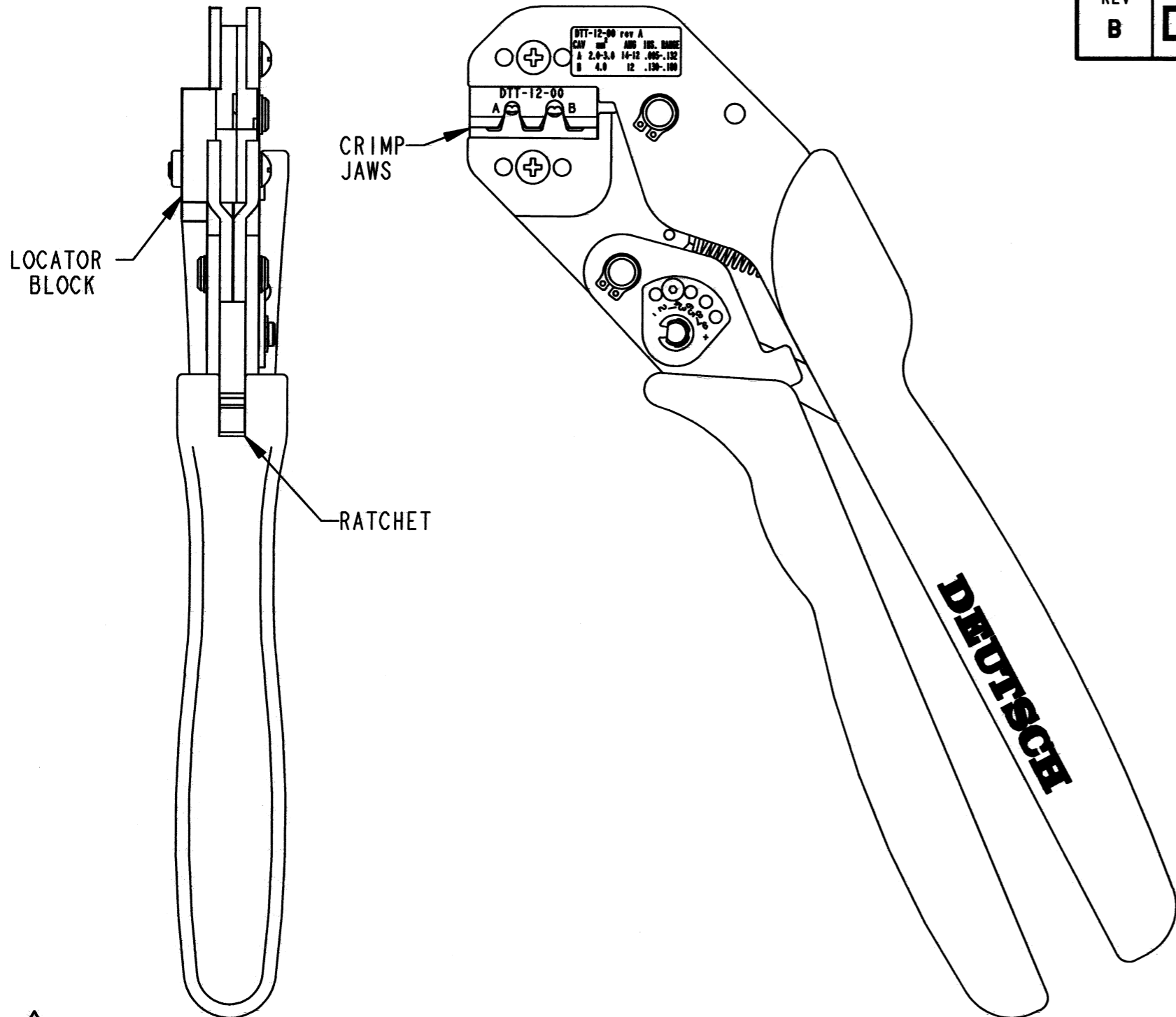
Contact us

Tel: +86-755-8981 8866 Fax: +86-755-8427 6832

Email & Skype: info@chipsmall.com Web: www.chipsmall.com

Address: A1208, Overseas Decoration Building, #122 Zhenhua RD., Futian, Shenzhen, China





REV
B DTT-12-00

REVISIONS			
SYM	DESCRIPTION	DATE	APPROVED
NC	NEW RELEASE PER E.O. P16388	11-24-99	R.D.R.
A	REVISED PER E.O. P19059	5-1-06	R.D.R.
B	REVISED PER E.O. P21281	1-20-12	ADR


CRIMP DATA		
1060-12-01** PIN 4		
1062-12-01** SOCKET 4		
CAVITY	WIRE SIZE 3	INSULATION RANGE
A	2.0 mm ² 14 AWG (TXL, GXL, SXL)	.113 - .156 [2.87 - 4.06]
	2.5 mm ²	
	3.0 mm ² 12 AWG (TXL)	
B	12 AWG (GXL, SXL)	.145 - .176 [3.68 - 4.47]
	4.0mm ²	

- 6 CONDUCTOR CRIMP TO BE MEASURED USING A BLADE MICROMETER WITH .100 [2.54] MIN SPINDLE AND .060/.010 [1.52/.25] ANVIL. SEE SECTION A-A.
 - 5. EACH TOOL INCLUDES AN INSTRUCTION MANUAL 0425-036-0000.
 - 4 **=CONTACT PLATING CODE (44=SELECTIVE GOLD; 66=TIN/NICKEL).
 - 3 CONDUCTOR TYPES ARE PER SAE J1128(AWG) AND ISO 6722(METRIC).
 - 2. TOOL IS BLACK WITH YELLOW HANDLES.
 - 1. DIMENSIONS ARE IN INCHES [mm].
- NOTES: UNLESS OTHERWISE SPECIFIED.

SIGNATURE & DATE	
DR	J.LIM 10/15/05
CHK	<i>[Signature]</i> 1/20/02
PE	<i>[Signature]</i> 1/20/2012
APPD	<i>[Signature]</i> 1/20/12
SCALE	NONE WT 1.6 LB

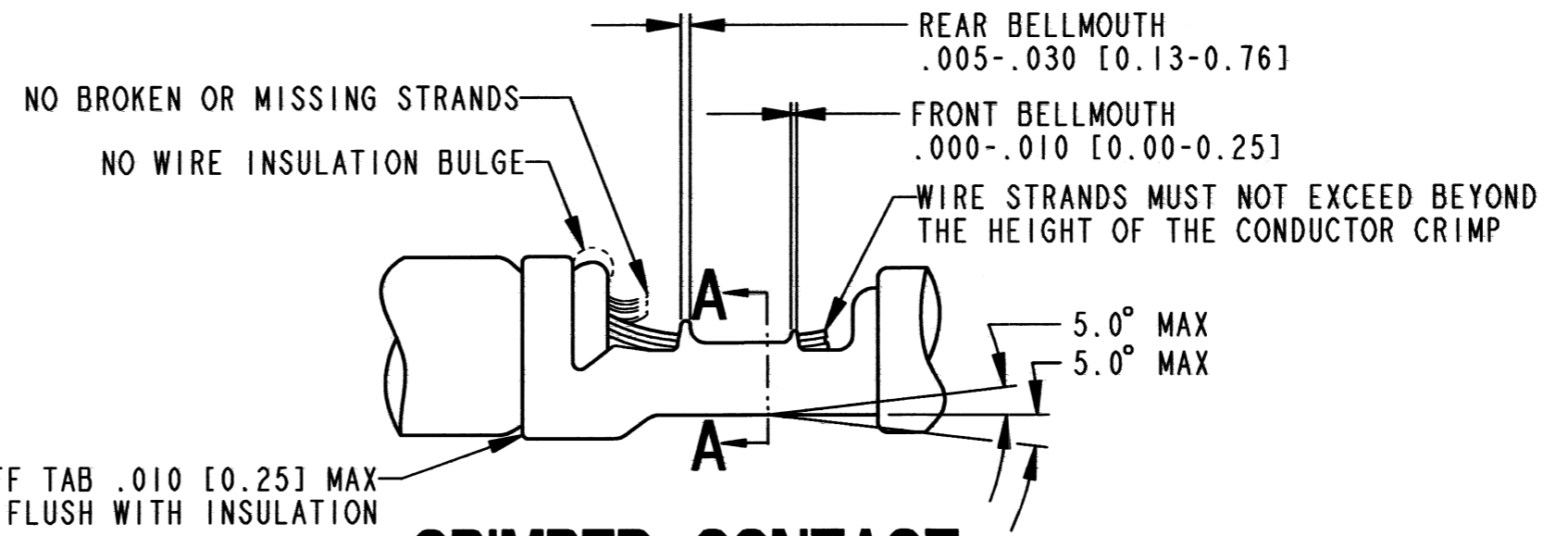
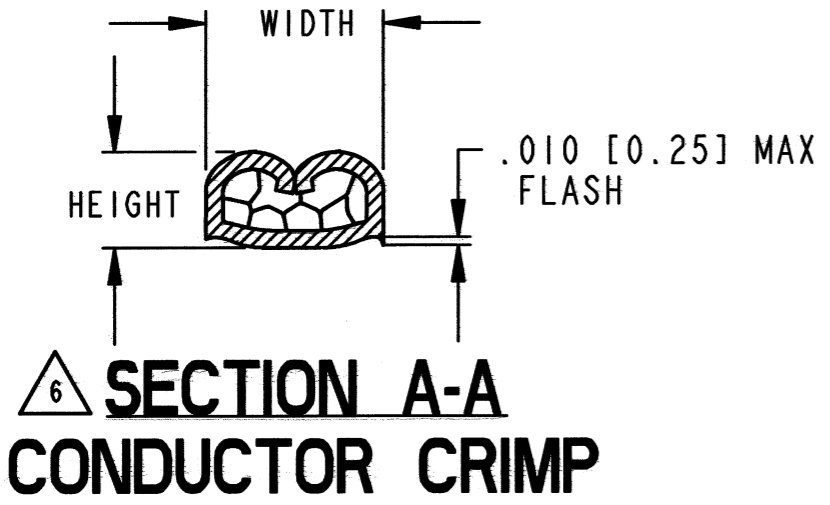
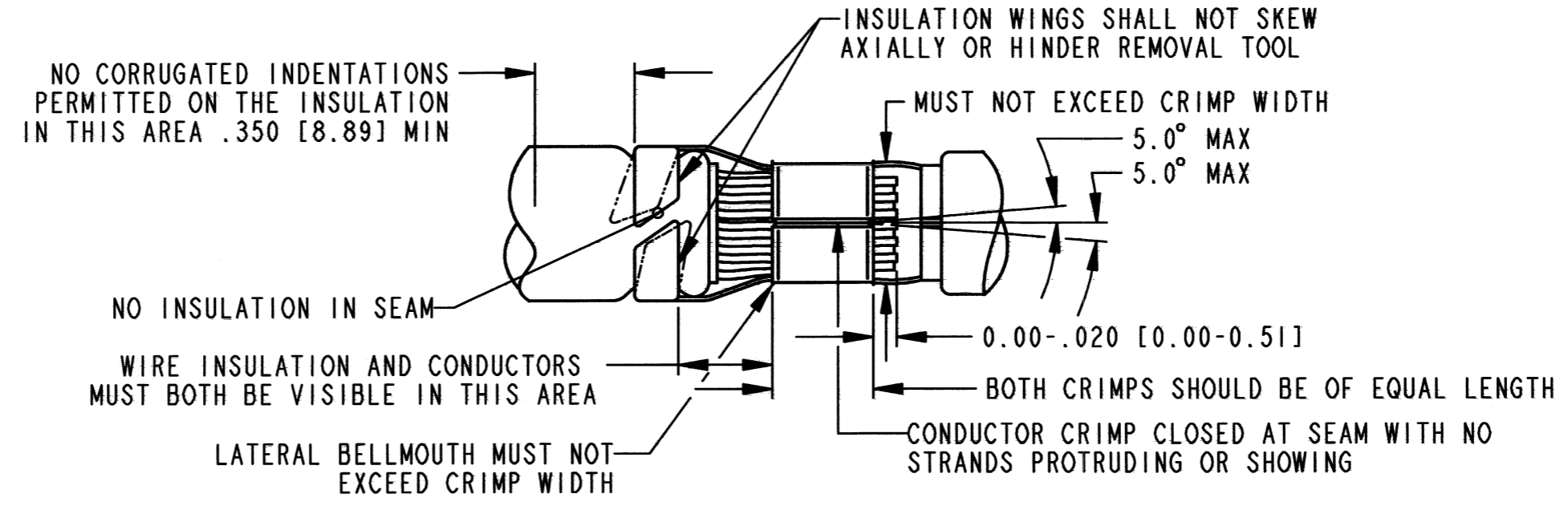
FIELD MAINTENANCE
CRIMP TOOL
DTT-12-00
12 SIZE S/F

ENVELOPE

EP EP058	MATL. CODE
 3850 INDUSTRIAL AVE. HEMET, CA 92545	
B	DTT-12-00
DWG SIZE	CODE 11139 SHEET 1 OF 2

REV
B DTT-12-00

REVISIONS			
SYM	DESCRIPTION	DATE	APPROVED
B	SEE SHEET 1	1-20-12	RDR



CRIMPED CONTACT

NOTES:

SIGNATURE & DATE	
DR	J. LIM 10/15/05
CHK	<i>S. Boyd</i> 1/20/2012
PE	<i>S. Boyd</i> 1/20/2012
APPD	<i>S. Boyd</i> 1-20-12
SCALE	WT

FIELD MAINTENANCE
CRIMP TOOL
DTT-12-00
12 SIZE S/F

ENVELOPE

EP EP058	MATL. CODE
3850 INDUSTRIAL AVE. HEMET, CA 92545	
B DTT-12-00	
DWG SIZE	CODE 11139 SHEET 2 OF 2