



Chipsmall Limited consists of a professional team with an average of over 10 year of expertise in the distribution of electronic components. Based in Hongkong, we have already established firm and mutual-benefit business relationships with customers from,Europe,America and south Asia,supplying obsolete and hard-to-find components to meet their specific needs.

With the principle of “Quality Parts,Customers Priority,Honest Operation,and Considerate Service”,our business mainly focus on the distribution of electronic components. Line cards we deal with include Microchip,ALPS,ROHM,Xilinx,Pulse,ON,Everlight and Freescale. Main products comprise IC,Modules,Potentiometer,IC Socket,Relay,Connector.Our parts cover such applications as commercial,industrial, and automotives areas.

We are looking forward to setting up business relationship with you and hope to provide you with the best service and solution. Let us make a better world for our industry!



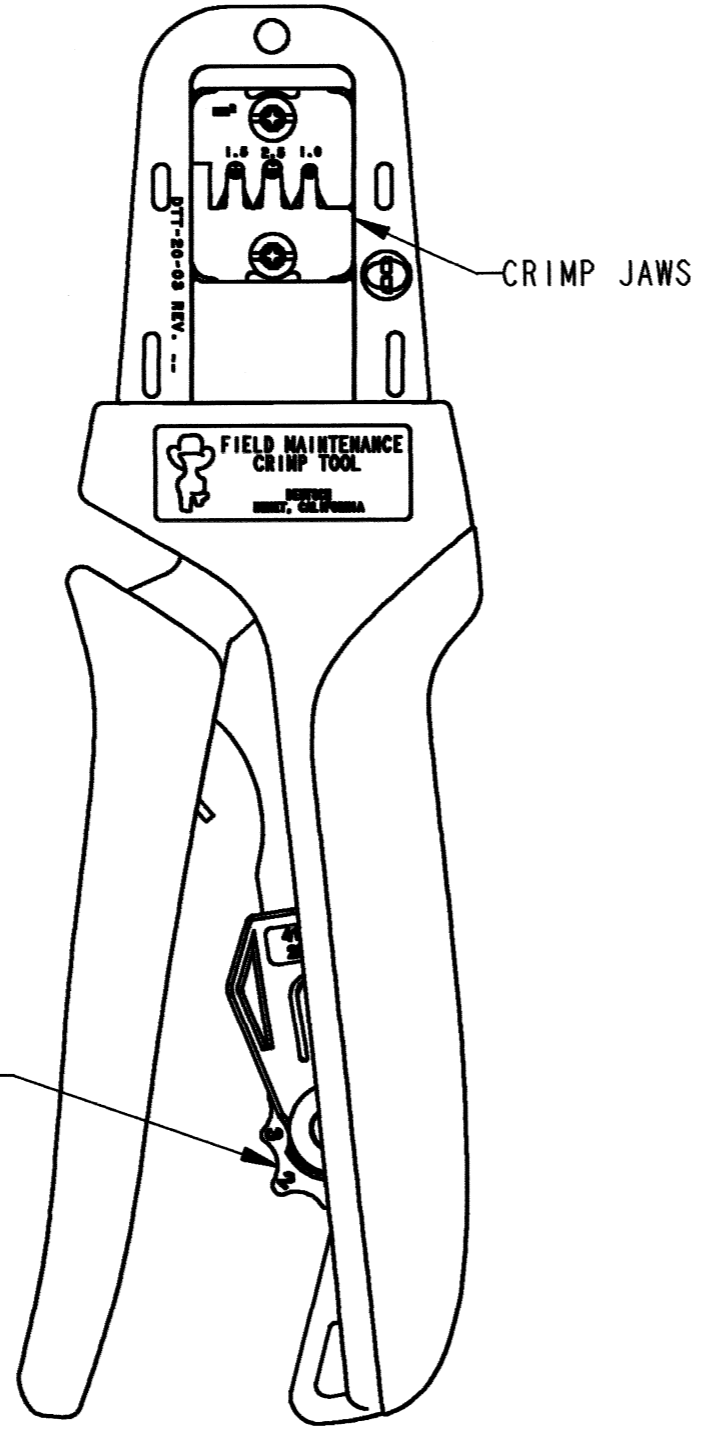
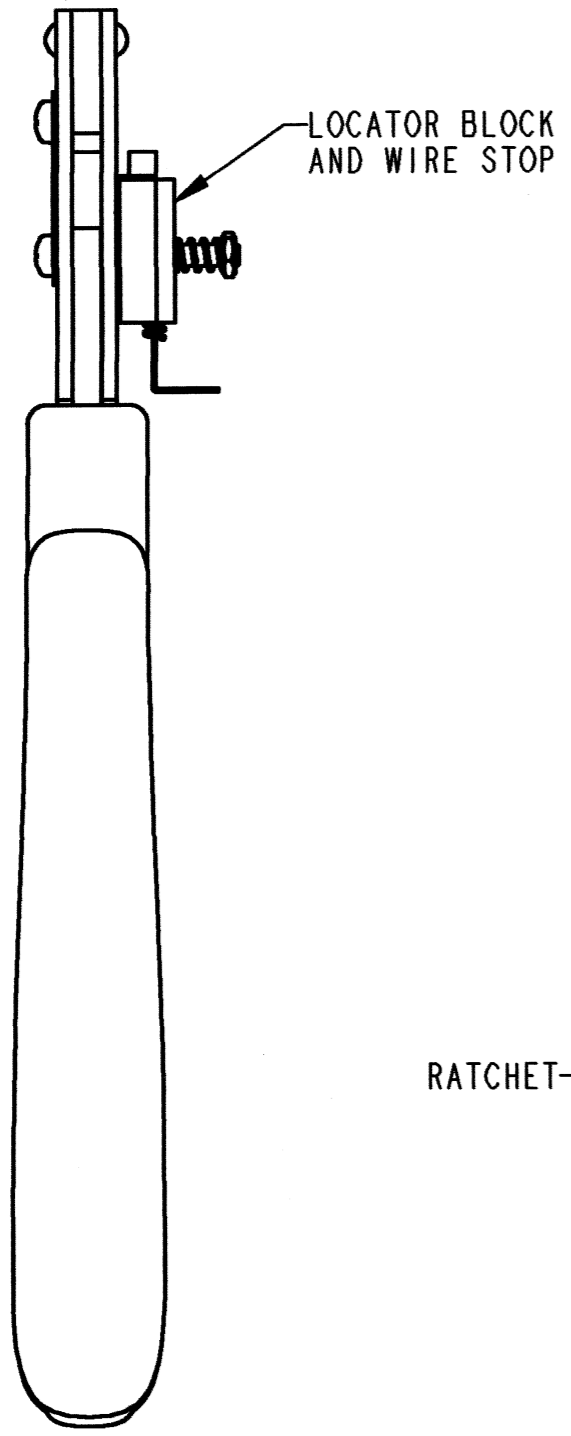
Contact us

Tel: +86-755-8981 8866 Fax: +86-755-8427 6832

Email & Skype: info@chipsmall.com Web: www.chipsmall.com

Address: A1208, Overseas Decoration Building, #122 Zhenhua RD., Futian, Shenzhen, China





REV A **DTT-20-03**

REVISIONS			
SYM	DESCRIPTION	DATE	APPROVED
NC	NEW RELEASE PER E.O. P20355	10-23-09	R.D.R.
A	REVISED PER E.O. P20576	8-23-10	RDR

CRIMP DATA		
1060-20-06** PIN 4		
1062-20-06** SOCKET 4		
CAVITY	CONDUCTOR WIRE SIZE 3	INSULATION RANGE
1.0mm²	18 TXL	.075 - .100 [1.91 - 2.54]
	18 GXL	
	18 SXL	
	1.0 mm ²	
1.5mm²	16 TXL	.082 - .112 [2.08 - 2.84]
	16 GXL	
	1.5 mm ²	
2.5mm²	16 SXL	.090 - .125 [2.29 - 3.18]
	14 TXL	
	14 GXL	
	2.5 mm ²	

- 5. EACH TOOL INCLUDES AN INSTRUCTION MANUAL 0425-076-0000.
- 4 **=CONTACT PLATING CODE (22=NICKEL; 44=SELECTIVE GOLD).
- 3 CONDUCTOR TYPES ARE PER ISO 6722(METRIC) AND J1128(AWG).
- 2. TOOL IS BLACK WITH DARK BLUE HANDLES.
- 1. DIMENSIONS ARE IN INCHES [mm].

NOTES: UNLESS OTHERWISE SPECIFIED.

SIGNATURE & DATE	
DR	J. APOSTOL 19FEB2009
CHK	R. [Signature] 8/20/10
PE	[Signature] 8/16/2010
APPD	R. [Signature] 8-20-10
SCALE	NONE WT _____

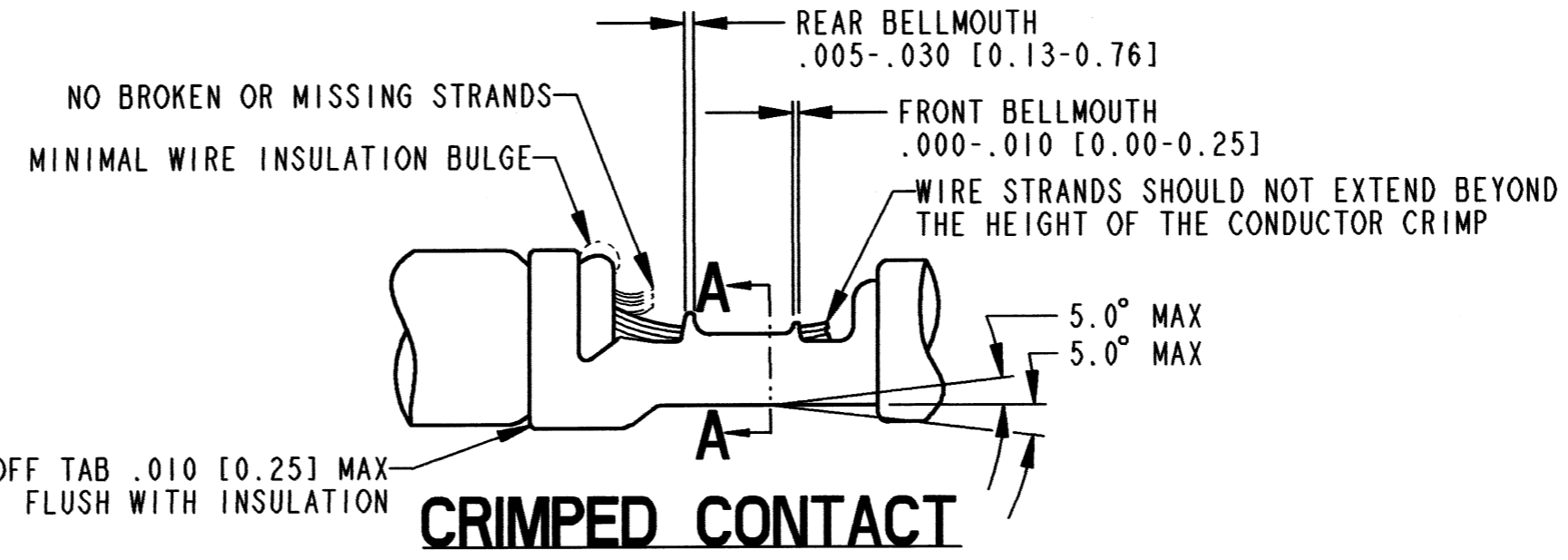
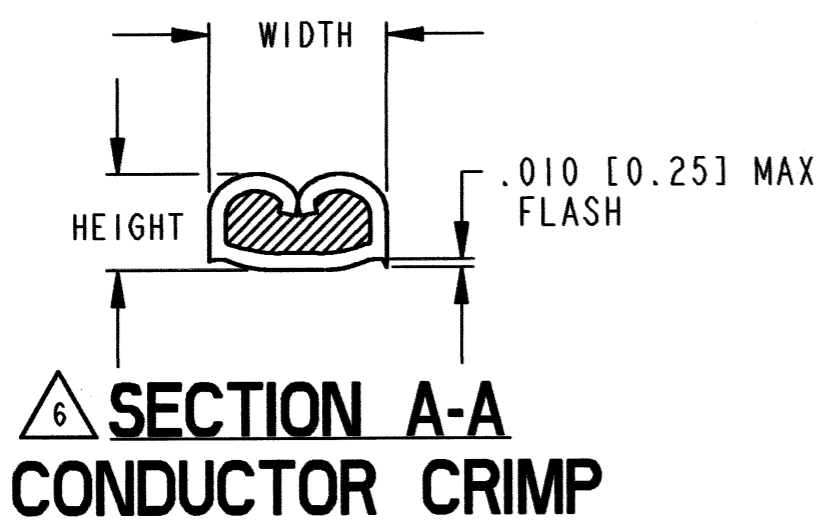
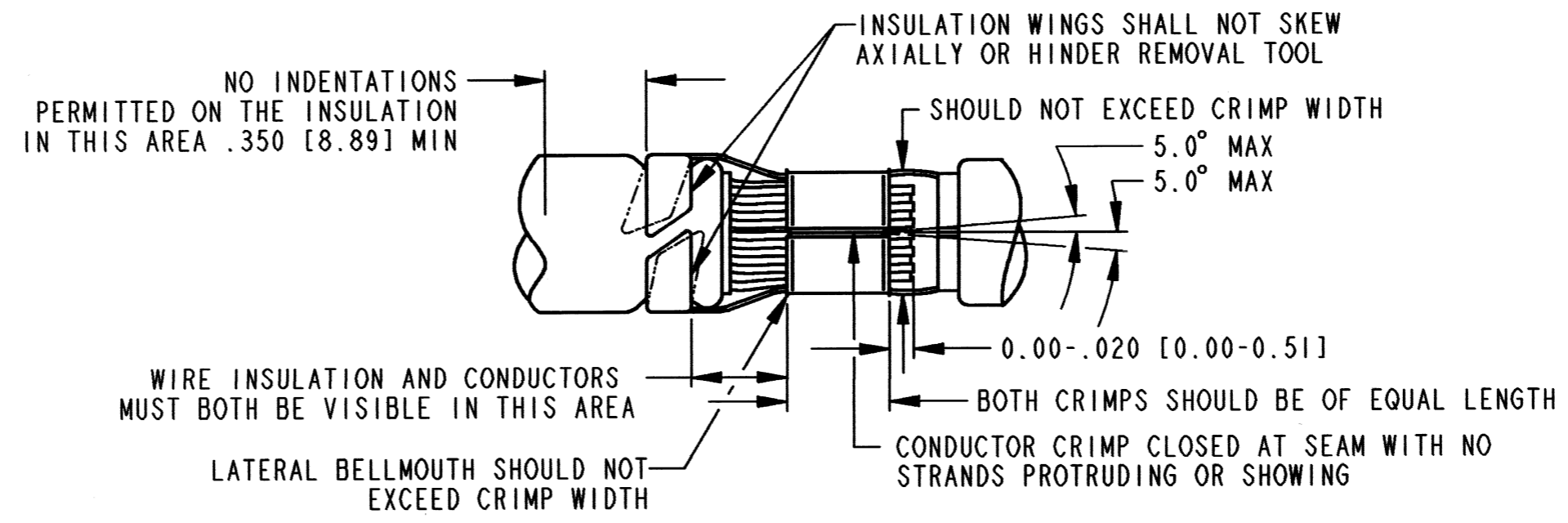
FIELD MAINTENANCE
CRIMP TOOL
DTT-20-03
20 SIZE S/F

ENVELOPE

EP 178	MATL. CODE
 3850 INDUSTRIAL AVE. HEMET, CA 92545	
B	DTT-20-03
DWG SIZE	CODE 11139 SHEET 1 OF 2

REV
A **DTT-20-03**

REVISIONS			
SYM	DESCRIPTION	DATE	APPROVED
A	SEE SHEET 1	8-23-10	RDR



NOTES:

SIGNATURE & DATE	
DR	J. APOSTOL 19FEB2009
CHK	R. Rad 8/20/10
PE	
APPD	R. Rad 8-23-10
SCALE	NONE WT

FIELD MAINTENANCE
CRIMP TOOL
DTT-20-03
20 SIZE S/F

ENVELOPE

EP 178	MATL. CODE
3850 INDUSTRIAL AVE. HEMET, CA 92545	
B	DTT-20-03
DWG SIZE	CODE 11139 SHEET 2 OF 2