



Chipsmall Limited consists of a professional team with an average of over 10 year of expertise in the distribution of electronic components. Based in Hongkong, we have already established firm and mutual-benefit business relationships with customers from,Europe,America and south Asia,supplying obsolete and hard-to-find components to meet their specific needs.

With the principle of "Quality Parts,Customers Priority,Honest Operation,and Considerate Service",our business mainly focus on the distribution of electronic components. Line cards we deal with include Microchip,ALPS,ROHM,Xilinx,Pulse,ON,Everlight and Freescale. Main products comprise IC,Modules,Potentiometer,IC Socket,Relay,Connector.Our parts cover such applications as commercial,industrial, and automotives areas.

We are looking forward to setting up business relationship with you and hope to provide you with the best service and solution. Let us make a better world for our industry!



Contact us

Tel: +86-755-8981 8866 Fax: +86-755-8427 6832

Email & Skype: info@chipsmall.com Web: www.chipsmall.com

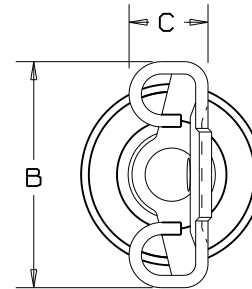
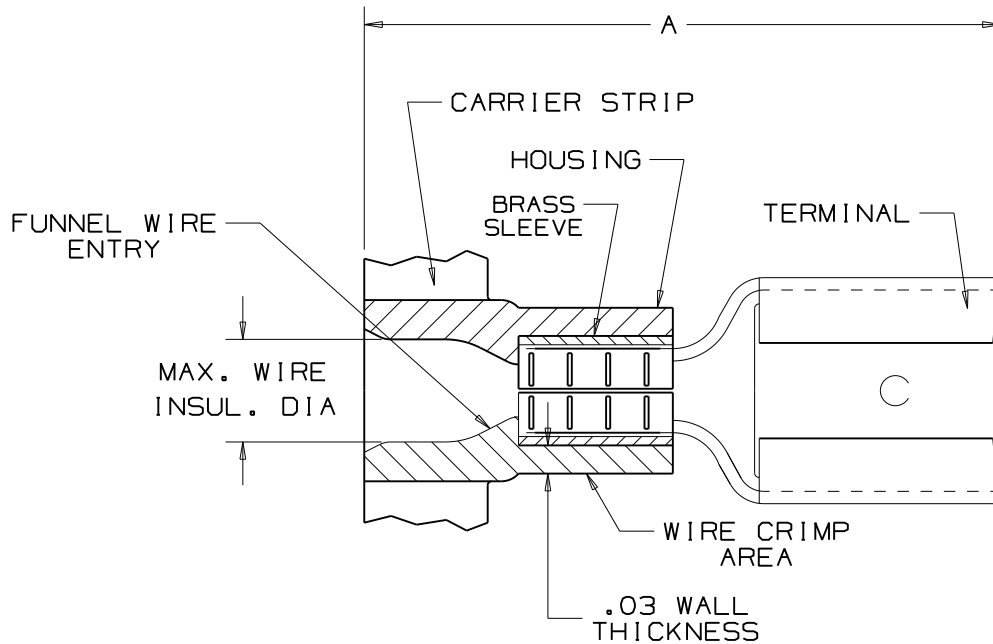
Address: A1208, Overseas Decoration Building, #122 Zhenhua RD., Futian, Shenzhen, China



THIS COPY IS PROVIDED ON A RESTRICTED BASIS AND IS NOT TO BE USED IN ANY WAY DETRIMENTAL TO THE INTERESTS OF PANDUIT CORP.

NOTES:

1. 600 V MAX VOLTAGE RATING.
221° F (105°) MAX TEMPERATURE RATING.
STRANDED COPPER WIRE ONLY.
2. SEE www.panduit.com FOR PART NUMBER SUFFIX DESIGNATION FOR PACKAGE SIZE.
3. MATERIAL:
A. STAMPING: CDA-260 BRASS, TIN PLATED
B. HOUSING: PVC
4. DIMENSIONS IN BRACKETS ARE IN mm OR mm?
5. WIRE STRIP LENGTH $11/32 \begin{matrix} +1/32 \\ -0 \end{matrix}$



RU[®]
RECOGNIZED
E78522

SA
CERTIFIED
LR31212

TOOL CHART - RECOMMENDED
PRESSES: CP-851, CP860, CP-861,
CP-870, CP-862

PART NUMBER	TAB SIZE	WIRE RANGE AWG	COLOR	MAX. INSUL.	DIMENSIONS in.			CA-800/CA9 APPLICATOR DIE INSERTS
					A $\pm .03$	B $\pm .02$	C $\pm .02$	
DV10-250C-2K	.250 X .032 (6.4 X 0.8)	12-10	YELLOW	.23 (5.8)	.95 (24.1)	.29 (7.4)	.12 (3.1)	CD-800-3 CD9-3B

03	8/11	SHOR	UPDATED UL SYMBOL, MAX. INSULATION, REMOVED PACKAGE SIZES, MODIFIED NOTE #2			PANDUIT CORP.	TINLEY PARK, ILLINOIS		
02	7/03	KLFU	ADDED INTERNAL SERRATIONS ADDED CP-862, CD9 & CA9 TO CHART						
01	7/98	TM	ADDED AGENCY APPROVALS	JM	LA	FEMALE DISCONNECT FOR COMPRESSOR TABS, VINYL INSULATED, .250 x .032			
00	10/97	TM	RELEASED	DH	LA				
REV	DATE	BY	DESCRIPTION	PM	CUST	DRAWN BY JKD	CHK'D	SCALE NONE	DRAWING NO./CAD FILENAME A41654