



Chipsmall Limited consists of a professional team with an average of over 10 year of expertise in the distribution of electronic components. Based in Hongkong, we have already established firm and mutual-benefit business relationships with customers from,Europe,America and south Asia,supplying obsolete and hard-to-find components to meet their specific needs.

With the principle of "Quality Parts,Customers Priority,Honest Operation,and Considerate Service",our business mainly focus on the distribution of electronic components. Line cards we deal with include Microchip,ALPS,ROHM,Xilinx,Pulse,ON,Everlight and Freescale. Main products comprise IC,Modules,Potentiometer,IC Socket,Relay,Connector.Our parts cover such applications as commercial,industrial, and automotives areas.

We are looking forward to setting up business relationship with you and hope to provide you with the best service and solution. Let us make a better world for our industry!



Contact us

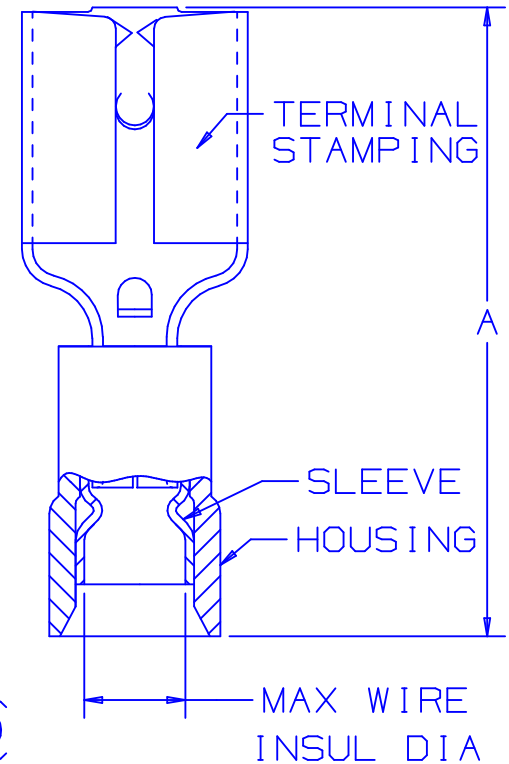
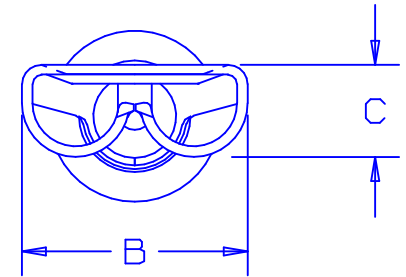
Tel: +86-755-8981 8866 Fax: +86-755-8427 6832

Email & Skype: info@chipsmall.com Web: www.chipsmall.com

Address: A1208, Overseas Decoration Building, #122 Zhenhua RD., Futian, Shenzhen, China



PART NUMBER		TAB SIZE	WIRE RANGE AWG	HOUSING COLOR	MAX INSUL DIA	DIMENSIONS in		
PREFIX	PK					A ±.03	B ±.01	C ±.01
DVF18-187	-C -M -MY	.187 × .032 (4.8 × 0.8)	22-18	RED	.137 (3.48)	.76 (19.3)	.23 (5.8)	.10 (2.5)
DVF18-188	-C -M -MY	.187 × .020 (4.8 × 0.5)	22-18	RED	.137 (3.48)	.76 (19.3)	.23 (5.8)	.10 (2.5)
DVF18-205	-C -M	.187/.205 × .032 (4.8/5.2 × 0.8)	22-18	RED	.137 (3.48)	.76 (19.3)	.25 (6.4)	.12 (3.0)
DVF18-206	-C -M	.187/.205 × .020 (4.8/5.2 × 0.5)	22-18	RED	.137 (3.48)	.76 (19.3)	.25 (6.4)	.12 (3.0)
DVF18-250	-C -M -MY	.250 × .032 (6.3 × 0.8)	22-18	RED	.137 (3.48)	.81 (20.6)	.29 (7.4)	.12 (3.0)
DVF14-187	-C -M	.187 × .032 (4.8 × 0.8)	16-14	BLUE	.162 (4.11)	.76 (19.3)	.23 (5.8)	.10 (2.5)
DVF14-188	-C -M	.187 × .020 (4.8 × 0.5)	16-14	BLUE	.162 (4.11)	.76 (19.3)	.23 (5.8)	.10 (2.5)
DVF14-205	-C -M	.187/.205 × .032 (4.8/5.2 × 0.8)	16-14	BLUE	.162 (4.11)	.76 (19.3)	.25 (6.4)	.12 (3.0)
DVF14-206	-C -M	.187/.205 × .020 (4.8/5.2 × 0.5)	16-14	BLUE	.162 (4.11)	.76 (19.3)	.25 (6.4)	.12 (3.0)
DVF14-250	-C -M	.250 × .032 (6.3 × 0.8)	16-14	BLUE	.162 (4.11)	.81 (20.6)	.29 (7.4)	.12 (3.0)



LISTED CERTIFIED
20H3

A41635_04

NOTES:

- USED FOR:
 - A. 300V MAX. VOLTAGE RATING
 - B. STRANDED COPPER WIRE ONLY
 - C. 194°F (90°C) MAX.TEMP.RATING OF INSUL. MATERIAL.
- MATERIAL:
 - A. STAMPING: .016 (0.41) THK BRASS, TIN PLATED
 - B. SLEEVE: .016 (0.41) THK. BRASS, TIN PLATED
 - C. HOUSING: VINYL
- INSTALLATION TOOLS: CT-500,CT-1550,CT-1551,CT-550,
CT-2400 (CT-2455CH),CT-600 (CT-500CH
OR CT-550CH)
- DIMENSIONS IN BRACKETS ARE IN MILLIMETERS
- PACKAGE QUANTITY: -C = 100 PCS.
-M = 1000 PCS., -MY = 1000 PCS.
- WIRE STRIP LENGTH: 9/32^{+1/32} (7.1^{+0.8})
-0

04	5/05	JHNU		ADDED PACKAGING CODE "MY" TO DRAWING.					
03	11/04	KLFU	SKB	ADDED GEOMETRY			SKB	TRO	
02	6/97	JAMB	RLS	MAX. TEMP. RATING OF INSULATION MATERIAL WAS 221°F (105°C)	05958		LA	DBH	
01	5/97	JAMB	RLS	ADDED " LISTED 20H3 "AND " CERTIFIED " TO EXISTING UL AND CSA SYMBOLS	05813		LA	DBH	
REV	DATE	BY	CHK	DESCRIPTION	ECN #	QA	CUST	PM	SUP

PANDUIT CORP

TINLEY PARK, ILLINOIS

VINYL INSULATED FEMALE DISCONNECT,
FUNNELED WIRE ENTRY (DVF SERIES)

DRAWN BY T SMA CHK'D RLS SCALE NONE DRAWING NO. A41635