



Chipsmall Limited consists of a professional team with an average of over 10 year of expertise in the distribution of electronic components. Based in Hongkong, we have already established firm and mutual-benefit business relationships with customers from,Europe,America and south Asia,supplying obsolete and hard-to-find components to meet their specific needs.

With the principle of “Quality Parts,Customers Priority,Honest Operation,and Considerate Service”,our business mainly focus on the distribution of electronic components. Line cards we deal with include Microchip,ALPS,ROHM,Xilinx,Pulse,ON,Everlight and Freescale. Main products comprise IC,Modules,Potentiometer,IC Socket,Relay,Connector.Our parts cover such applications as commercial,industrial, and automotives areas.

We are looking forward to setting up business relationship with you and hope to provide you with the best service and solution. Let us make a better world for our industry!



## Contact us

Tel: +86-755-8981 8866 Fax: +86-755-8427 6832

Email & Skype: info@chipsmall.com Web: www.chipsmall.com

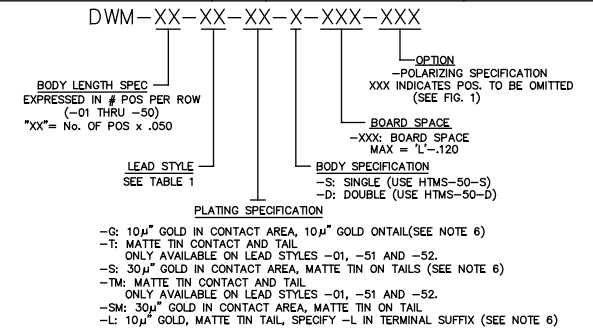
Address: A1208, Overseas Decoration Building, #122 Zhenhua RD., Futian, Shenzhen, China



NOTES:

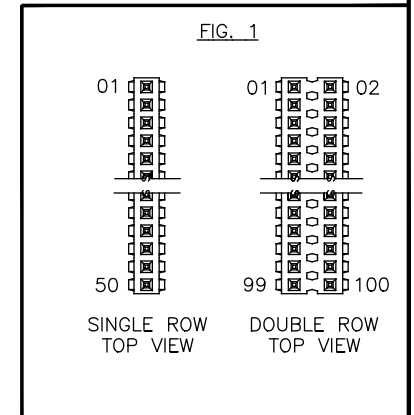
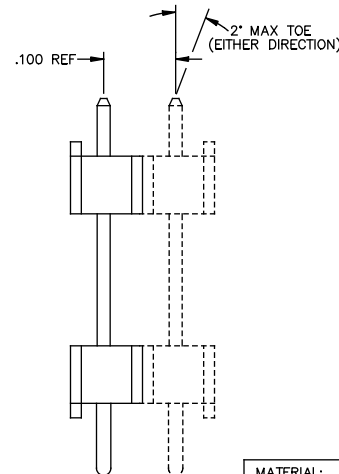
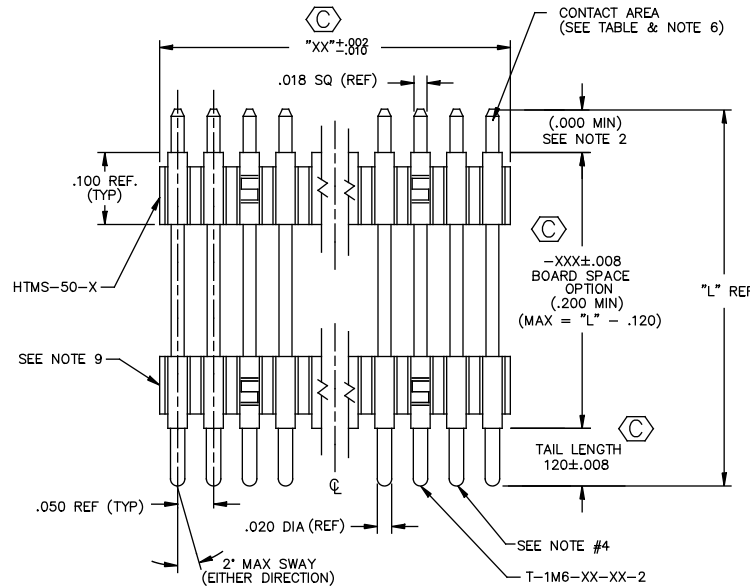
1. MAX ALLOWABLE BOW: .005 INCH/INCH.
2. HEIGHT VARIATION BETWEEN ANY TWO PINS SHALL BE .010 MAX.
3. TERMINAL PUSHOUT FORCE: 2 lbs. MIN.
4. MAX PIN ROTATION IN BODY: 2°.
5. (C) REPRESENTS A CRITICAL DIMENSION.
6. FOR -S, -G & -L PLATING, GOLD WILL BE ON CONTACT AREA.
7. TUBE POSITIONS -07 THRU -50. POSITIONS -01 THRU -06 ARE TO BE LAYER PACKAGED.
8. MAX CUT FLASH: .010
9. FOR -D, USE DWM-50-D WHEN RAN ON BOARD STACKER AUTOMATION, HTMS-50-D FOR ALL OTHER PROCESSES. FOR -S, USE HTMS-50-S.
10. FOR ADDED MECHANICAL STABILITY, SAMTEC RECOMMENDS MECHANICAL BOARD SPACERS BE USED IN APPLICATIONS WITH GOLD OR SELECTIVE GOLD PLATED CONNECTORS. CONTACT IPG@SAMTEC.COM FOR MORE INFORMATION.

DIMENSIONS ARE IN INCHES		TOLERANCES ARE:		TITLE:	DWG NO:
ONE PLACE DECIMALS ± .1	THREE PLACE DECIMALS ± .005	ANGLES ± 2°		BOARD SPACING MICRO STRIPS	DWM-XX-XX-XX-X-XXX-XXX
TWO PLACE DECIMALS ± .01	FOUR PLACE DECIMALS ± .0020				SHEET 1 OF 1



SEE NOTE 7

LEAD STYLE	TERMINAL SPEC.	'L'	CONTACT AREA	L' - .120 [3.05]		PACKAGING (7 POS MIN.)			
				BOARD SPACE	MAX (REF)	SINGLE ROW		DOUBLE ROW	
						PT	TP	PT	TP
-01	T-1M6-18-XX-2	.450 [11.43]	.190 [4.83]	REF	.330 [8.38]	PT-1-24-01-24	(2) TP-24	PT-1-24-01-22	(2) TP-03
-51	T-1M6-02-XX-2	.410 [10.41]	.140 [3.56]	REF	.290 [7.37]	PT-1-24-01-24	(2) TP-24	PT-1-24-01-22	(2) TP-03
-52	T-1M6-12-XX-2	.425 [10.80]	.165 [4.19]	REF	.305 [7.75]	PT-1-24-02-03	(2) TP-24	PT-1-24-02-53	(2) TP-09
-53	T-1M6-04-XX-2	.505 [12.83]	.190 [4.83]	REF	.385 [9.78]	PT-1-24-02-03	(2) TP-24	PT-1-24-02-46	(2) TP-03
-54	T-1M6-14-XX-2	.555 [17.10]	.190 [4.83]	REF	.435 [11.05]	PT-1-24-02-03	(2) TP-24	PT-1-24-06-29	(2) TP-03
-55	T-1M6-03-XX-2	.610 [15.49]	.190 [4.83]	REF	.490 [12.45]	PT-1-24-02-03	(2) TP-24	PT-1-24-04-44	(2) TP-03
-56	T-1M6-13-XX-2	.625 [15.88]	.190 [4.83]	REF	.505 [12.83]	PT-1-24-10-03	(2) TP-24	PT-TW002-S-SM	(2) TP-07
-57	T-1M6-19-XX-2	.650 [16.51]	.190 [4.83]	REF	.530 [13.46]	PT-1-24-10-03	(2) TP-24	PT-FW004-0X-D-EX	(2) TP-24
-58	T-1M6-05-XX-2	.705 [17.91]	.190 [4.83]	REF	.585 [14.86]	PT-1-24-10-03	(2) TP-24	PT-1-24-01-51	(2) TP-13
-59	T-1M6-15-XX-2	.755 [19.18]	.190 [4.83]	REF	.635 [16.13]	PT-1-24-10-03	(2) TP-24	PT-FW004-0X-D-EX	(2) TP-24
-60	T-1M6-16-XX-2	.825 [20.96]	.190 [4.83]	REF	.705 [17.91]	PT-1-24-10-03	(2) TP-24	PT-1-24-01-71	(2) TP-03
-61	T-1M6-28-XX-2	1.050 [26.67]	.190 [4.83]	REF	.930 [23.62]	PT-1-24-02-04	(2) TP-33	PT-1-24-08-03	(2) TP-03



\* PROPRIETARY NOTE \*  
 THIS DOCUMENT CONTAINS CONFIDENTIAL INFORMATION. IT IS THE PROPERTY OF SAMTEC, INC. AND IS NOT TO BE REPRODUCED, COPIED, OR TRANSMITTED IN ANY FORM OR BY ANY MEANS, ELECTRONIC OR MECHANICAL, WITHOUT THE WRITTEN PERMISSION OF SAMTEC, INC. THIS DOCUMENT IS THE PROPERTY OF SAMTEC, INC. AND IS NOT TO BE REPRODUCED, COPIED, OR TRANSMITTED IN ANY FORM OR BY ANY MEANS, ELECTRONIC OR MECHANICAL, WITHOUT THE WRITTEN PERMISSION OF SAMTEC, INC.

MATERIAL:  
 INSULATOR:  
 BLACK LIQUID CRYSTAL POLYMER  
 UL 94V-0  
 TERMINAL:  
 PHOSPHOR BRONZE

samtec  
 520 PARK EAST BLVD. NEW ALBANY, INDIANA 47150  
 PHONE (812) 944-6733 P.O. BOX 1147  
 CODE 55322  
 MADE BY: GREG REIDINGER 5-9-01  
 CHECKED BY: McCARTIN  
 DIS. APPROVAL: DEM  
 DWM-XX-XX-XX-X-XXX-XXX  
 SHEET 1 OF 1