



Chipsmall Limited consists of a professional team with an average of over 10 year of expertise in the distribution of electronic components. Based in Hongkong, we have already established firm and mutual-benefit business relationships with customers from,Europe,America and south Asia,supplying obsolete and hard-to-find components to meet their specific needs.

With the principle of “Quality Parts,Customers Priority,Honest Operation,and Considerate Service”,our business mainly focus on the distribution of electronic components. Line cards we deal with include Microchip,ALPS,ROHM,Xilinx,Pulse,ON,Everlight and Freescale. Main products comprise IC,Modules,Potentiometer,IC Socket,Relay,Connector.Our parts cover such applications as commercial,industrial, and automotives areas.

We are looking forward to setting up business relationship with you and hope to provide you with the best service and solution. Let us make a better world for our industry!



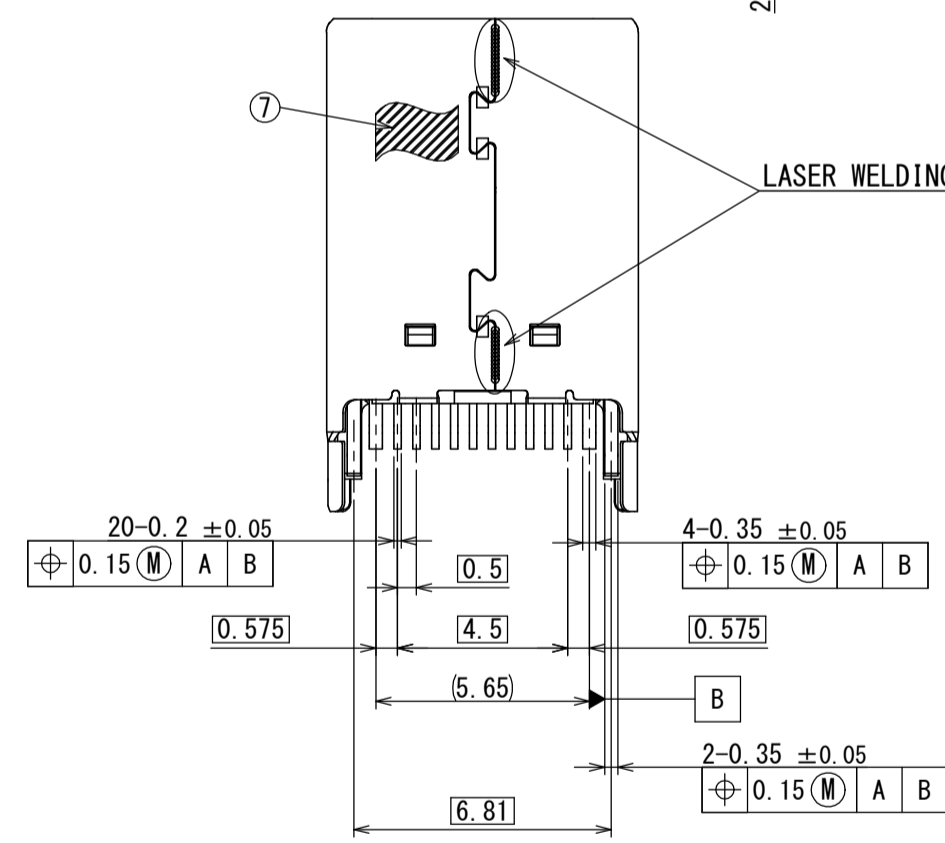
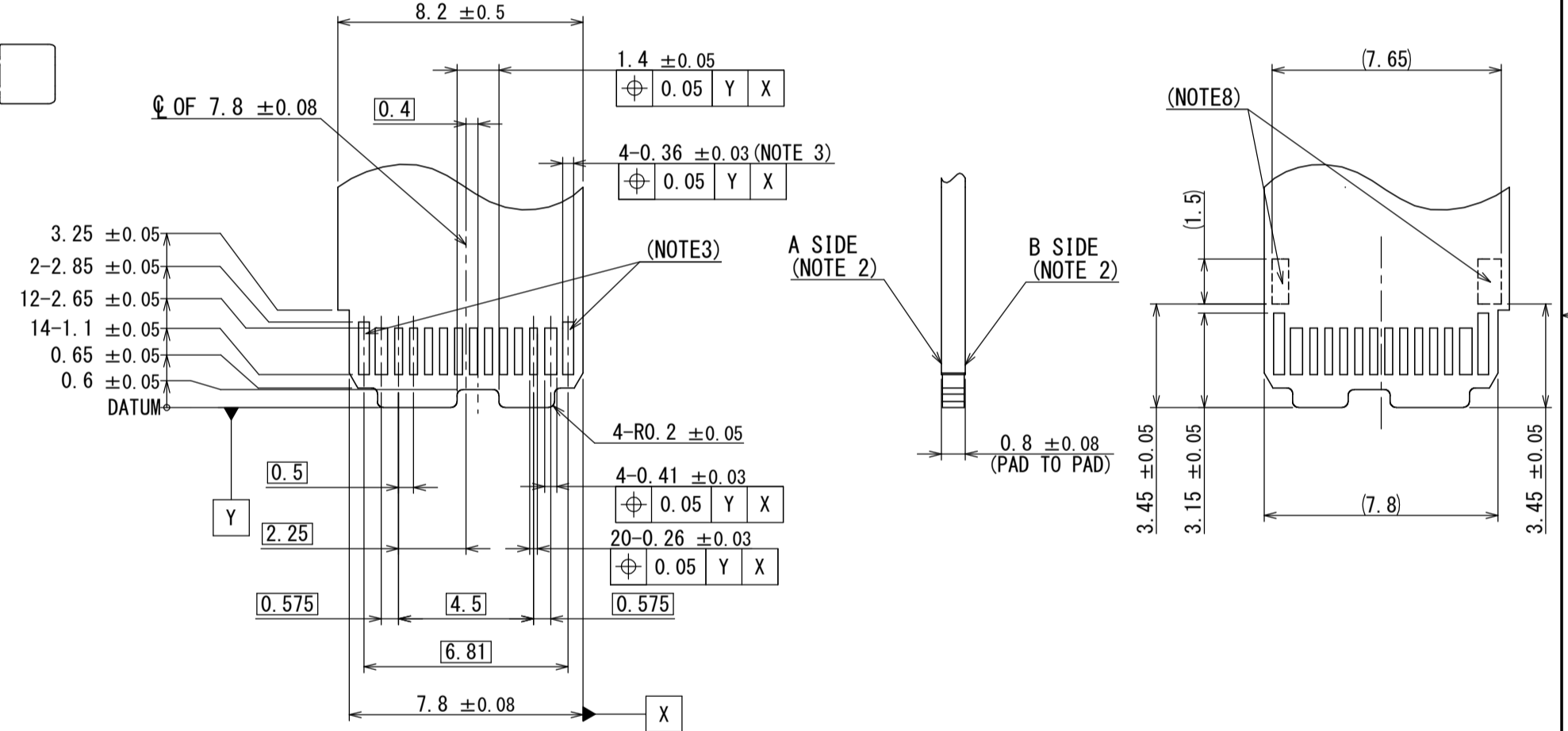
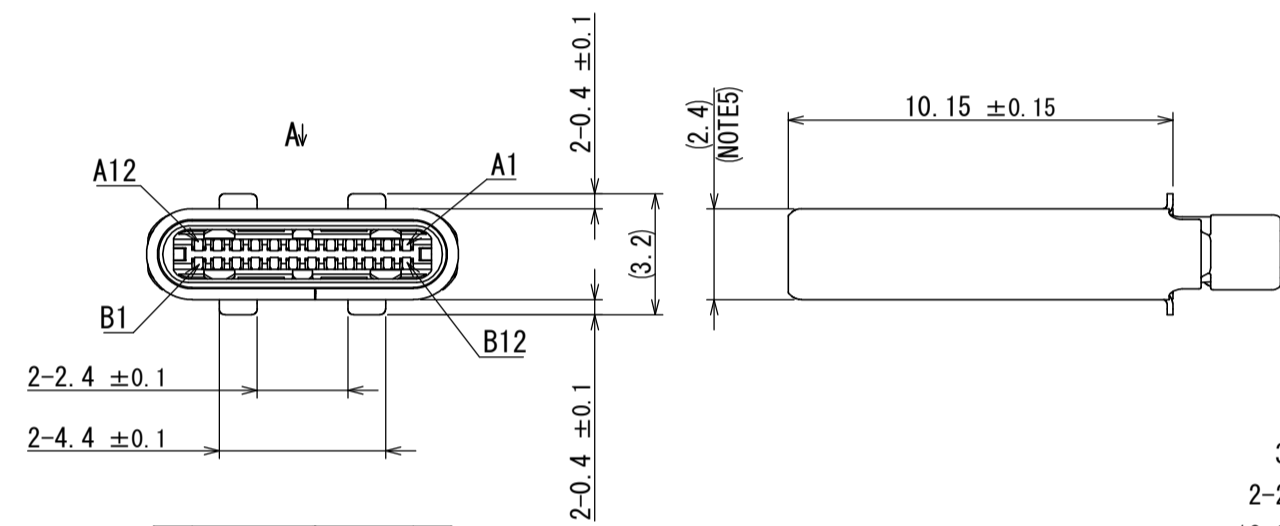
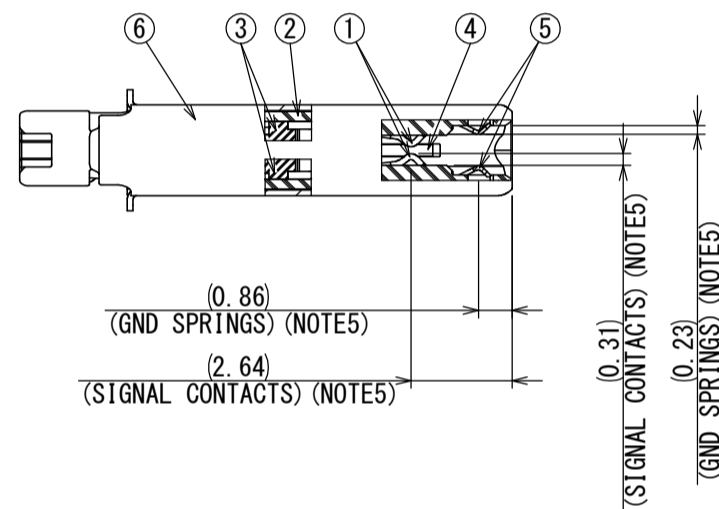
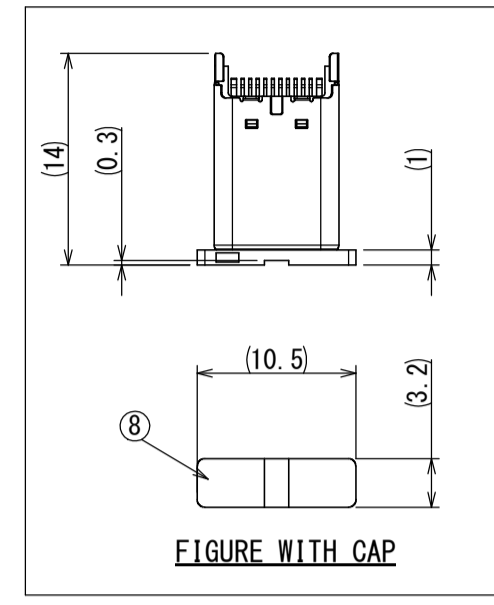
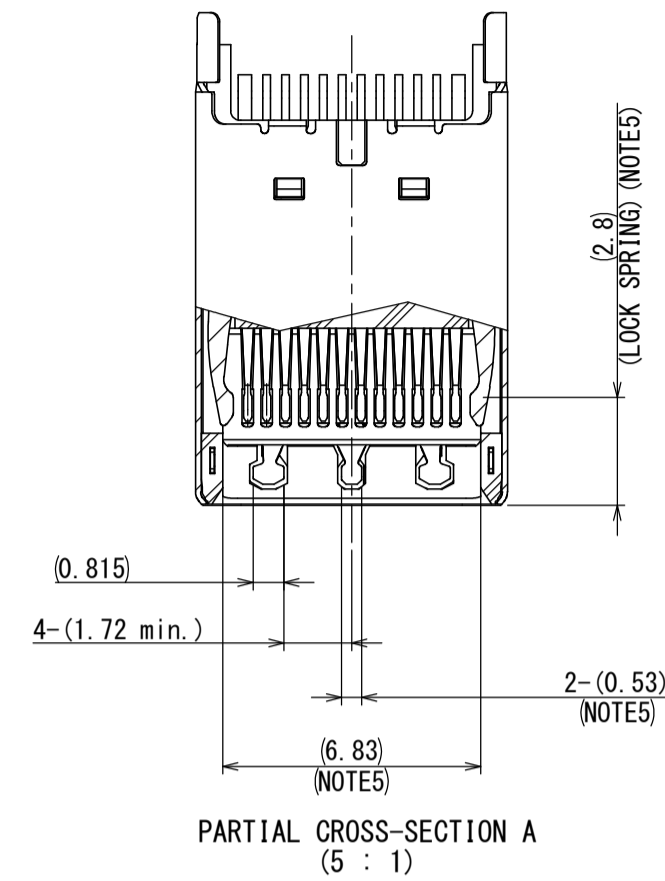
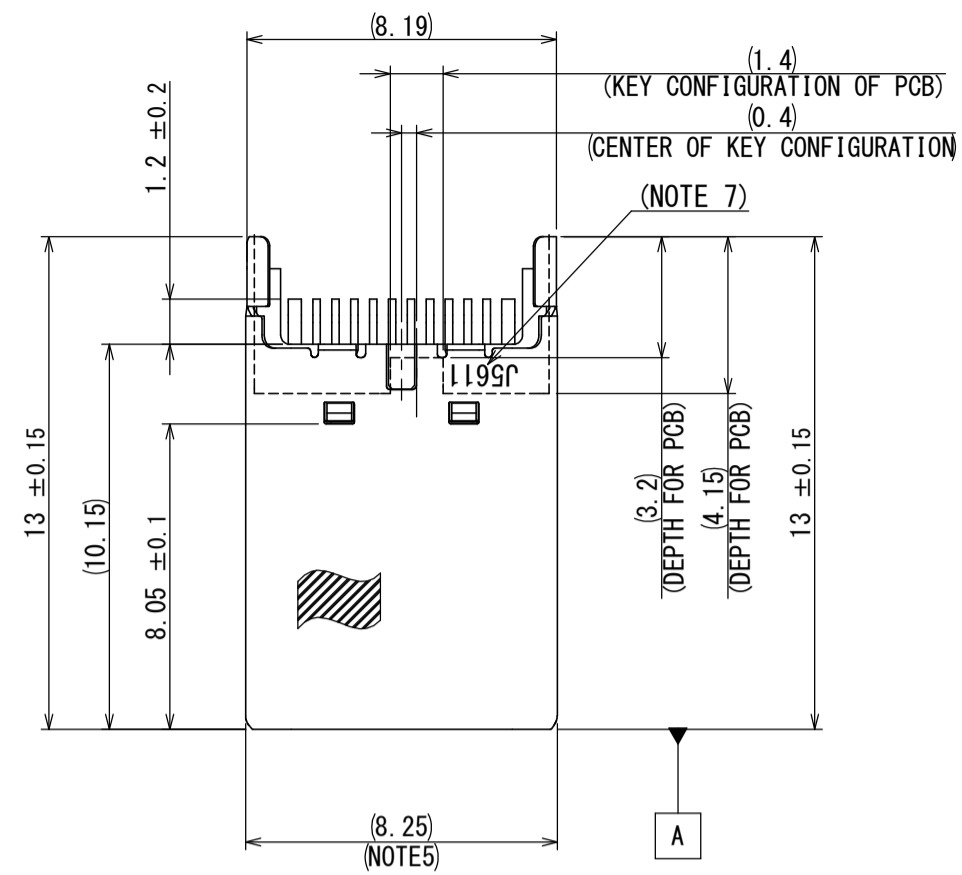
Contact us

Tel: +86-755-8981 8866 Fax: +86-755-8427 6832

Email & Skype: info@chipsmall.com Web: www.chipsmall.com

Address: A1208, Overseas Decoration Building, #122 Zhenhua RD., Futian, Shenzhen, China





APPLICABLE P. C. B DIMENSION (REF.)

NOTE1. THERE COULD BE UNRECOGNIZABLE DIFFERENCES FROM ACTUAL PRODUCT DUE TO PROCESS CONVENIENCE BUT NOT IMPACT ON THE FUNCTION.
 NOTE2. PCB PADS CONFIGURATION BE SAME BETWEEN A SIDE AND B SIDE.
 NOTE3. THERE PADS ARE USED FOR HOLDING PCB.
 A SIDE PAD : SHALL NOT BE ELECTRICAL USE AND NOT BE SOLDERED.
 B SIDE PAD : ELECTRICAL USE FOR GROUND. NECESSARY TO BE SOLDERED.
 NOTE4. RECOMMEND TO KEEP THE CAP STAY IN PLACE UNTIL ALL THE PROCESSES DONE.
 THE CAP PREVENTS A CONNECTOR FROM DEFORMED AND CONTAMINATION DURING PROCESSES SUCH AS PADDLE CARD ASSEMBLY AND CABLE ASSEMBLY.
 NOTE5. MATING DIMENSIONS CONSIST OF "Universal Serial Bus Type-C Cable and Connector Specification"
 NOTE6. PIN ASSIGNMENT (REF.)

NOTE7. LOT NUMBER IS MARKED AS INDICATED.
 【AUTOMATIC MACHINE ASSEMBLY】 : WITH LOT NUMBER
 【MANUAL JIG ASSEMBLY】 : WITHOUT LOT NUMBER

(EX) J 5 6 1 1
 VENDER ID
 YEAR (END OF ONE DIGIT AT A. D.)
 MONTH (JAN. TO SEP. : 1 TO 9, OCT. : 0, NOV. : X, DEC. : Y)
 DAY (NUMBER OR ALPHABET)
 EQUIPMENT No. (NUMBER OR ALPHABET)

NOTE8. RECOMMEND TO UTILIZE THE SIDE SHELL TABS BY SOLDERING TO PCB PADS FOR THE MECHANICAL STRENGTH AND GND CONNECTION.

Pin No.	A12	A11	A10	A9	A8	A7	A6	A5	A4	A3	A2	A1
	GND	RX2+	RX2-	Vbus	SBU1	D-	D+	CC	Vbus	TX1-	TX1+	GND
Pin No.	B1	B2	B3	B4	B5	B6	B7	B8	B9	B10	B11	B12
	GND	TX2+	TX2-	Vbus	Vconn			SBU2	Vbus	RX1-	RX1+	GND

符号 NO.	名 DESCRIPTION	個 QTY.	材 MATERIAL	仕 FINISH	備 REMARKS
8	CAP	1	HEAT RESISTING PLASTIC	(BLACK)	HALOGEN-FREE
7	TAPE	2	POLYIMIDE	-	HALOGEN-FREE
6	SHELL	1	STAINLESS STEEL	NICKEL PLATING	NICKEL: 1 μm MIN.
5	GROUND SPRING	2	STAINLESS STEEL	NICKEL PLATING	NICKEL: 0.8 μm MIN.
4	LOCK SPRING	1	STAINLESS STEEL	NICKEL PLATING	NICKEL: 0.8 μm MIN.
3	INSULATOR B	2	HEAT RESISTING PLASTIC	(BLACK)	HALOGEN-FREE
2	INSULATOR A	1	HEAT RESISTING PLASTIC	(BLACK)	HALOGEN-FREE
1	CONTACT	24	COPPER ALLOY		CONTACT AREA: GOLD FLASH OVER PALLADIUM-NICKEL NICKEL: 2 μm MIN. PALLADIUM-NICKEL: 0.75 μm MIN. GOLD FLASH: 0.05 μm MIN. SOLDER TAILS: NICKEL: 2 μm MIN. GOLD FLASH: 0.03 μm MIN.

仕様書 (SPECIFICATION) JACS-30353 JAH-30353	第1版 (ORIGINAL DATE) 18/DEC/2015	尺度 (SCALE) 5:1	シリーズ (SERIES) DX07	製 DR.	担 CHK. K. UEDA	製 DR.	担 CHK. Y. SAITOU	承認 APPD.	承認 APPD.	図面番号 (DRAWING NO.) SJ116680	版数 (VER.) 1
一般公差 (GENERAL TOLERANCE) 寸法 (DIMENSION) 角度 (ANGLES)	単位 (UNIT): mm	JAE-CONNECTOR.COM JAPAN AVIATION ELECTRONICS INDUSTRY, LTD. 図面番号 (DRAWING NO.) SJ116680									