



Chipsmall Limited consists of a professional team with an average of over 10 year of expertise in the distribution of electronic components. Based in Hongkong, we have already established firm and mutual-benefit business relationships with customers from,Europe,America and south Asia,supplying obsolete and hard-to-find components to meet their specific needs.

With the principle of “Quality Parts,Customers Priority,Honest Operation,and Considerate Service”,our business mainly focus on the distribution of electronic components. Line cards we deal with include Microchip,ALPS,ROHM,Xilinx,Pulse,ON,Everlight and Freescale. Main products comprise IC,Modules,Potentiometer,IC Socket,Relay,Connector.Our parts cover such applications as commercial,industrial, and automotives areas.

We are looking forward to setting up business relationship with you and hope to provide you with the best service and solution. Let us make a better world for our industry!



Contact us

Tel: +86-755-8981 8866 Fax: +86-755-8427 6832

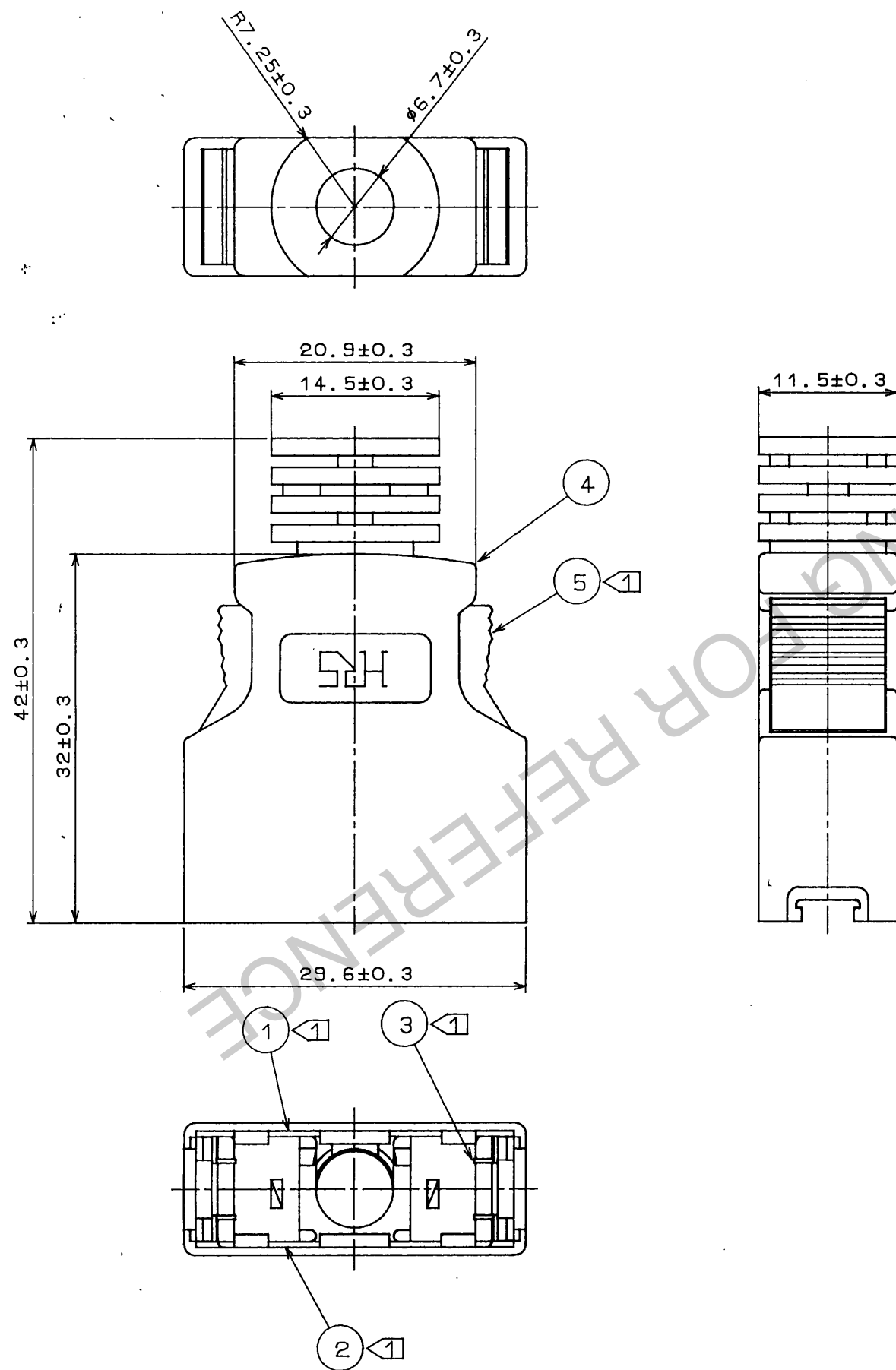
Email & Skype: info@chipsmall.com Web: www.chipsmall.com

Address: A1208, Overseas Decoration Building, #122 Zhenhua RD., Futian, Shenzhen, China



In case that the application demands a high level of reliability, such as automotive, please contact a company representative for further information.

NO.	REVISIONS	BY	CHKD	DATE	△	COUNT	REVISIONS	BY	CHKD	DATE
△					△					
△					△					
△					△					



Note ① Part No. ①②③ and ⑤ shall be attached.

3	Stainless steel																									
2	Stainless steel		5	Polycarbonate (Color:Light beige)UL94V-2																						
1	Stainless steel		4	Polycarbonate (Color:Light beige)UL94V-2																						
No.	MATERIAL	FINISH, REMARKS	No.	MATERIAL	FINISH, REMARKS																					
APPROVED	A. Nakagawa	10.4.90	<table border="1"> <thead> <tr> <th colspan="2">GENERAL DIMENSION TOLERANCE</th> </tr> </thead> <tbody> <tr> <td>6 or less</td> <td>±0.3</td> </tr> <tr> <td>over 6 to 18</td> <td>±0.5</td> </tr> <tr> <td>over 18 to 50</td> <td>±0.7</td> </tr> <tr> <td>over 50 to 125</td> <td>±1</td> </tr> <tr> <td>over 125 to 250</td> <td>±1.3</td> </tr> <tr> <th colspan="2">ANGULAR</th> <td>±1°</td> </tr> <tr> <td colspan="2">UNITS</td> <td>mm</td> </tr> <tr> <td colspan="2">SCALE</td> <td>2:1</td> </tr> </tbody> </table>			GENERAL DIMENSION TOLERANCE		6 or less	±0.3	over 6 to 18	±0.5	over 18 to 50	±0.7	over 50 to 125	±1	over 125 to 250	±1.3	ANGULAR		±1°	UNITS		mm	SCALE		2:1
GENERAL DIMENSION TOLERANCE																										
6 or less	±0.3																									
over 6 to 18	±0.5																									
over 18 to 50	±0.7																									
over 50 to 125	±1																									
over 125 to 250	±1.3																									
ANGULAR		±1°																								
UNITS		mm																								
SCALE		2:1																								
REVIEWED	S. Kikuta	10.4.90																								
CHECKED	M. Nakamura	10.4.90																								
DESIGNED	N. NISIMATU	10.4.90																								
DRAWN																										
DRAWING No. ADIC3-42480			PART NO. DX30M-20-CV																							
CIRCUIT SYMBOL			CODE No. CL 230-5052-0																							



ISSUED BY