



Chipsmall Limited consists of a professional team with an average of over 10 year of expertise in the distribution of electronic components. Based in Hongkong, we have already established firm and mutual-benefit business relationships with customers from,Europe,America and south Asia,supplying obsolete and hard-to-find components to meet their specific needs.

With the principle of “Quality Parts,Customers Priority,Honest Operation,and Considerate Service”,our business mainly focus on the distribution of electronic components. Line cards we deal with include Microchip,ALPS,ROHM,Xilinx,Pulse,ON,Everlight and Freescale. Main products comprise IC,Modules,Potentiometer,IC Socket,Relay,Connector.Our parts cover such applications as commercial,industrial, and automotives areas.

We are looking forward to setting up business relationship with you and hope to provide you with the best service and solution. Let us make a better world for our industry!



Contact us

Tel: +86-755-8981 8866 Fax: +86-755-8427 6832

Email & Skype: info@chipsmall.com Web: www.chipsmall.com

Address: A1208, Overseas Decoration Building, #122 Zhenhua RD., Futian, Shenzhen, China

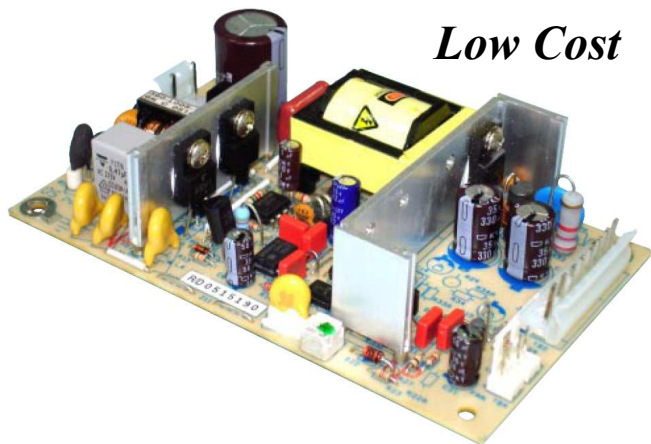


DY060 SERIES

60 WATT POWER SUPPLY FOR MEDICAL AND INDUSTRIAL APPLICATIONS

90 WATT PEAK CURRENT

Low Cost



DESCRIPTION

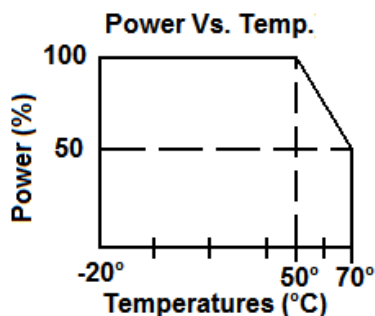
DY060 series is a universal input multiple output power supply. The series is a 60 Watt power supply in the size of 2.5" x 4.5" with a wattage density of 4.2W/in³. The efficiency can reach up to 78-87% depending on model.

FEATURES

- EMI FCC Class B
- No Minimum Load Required
- Single and Multiple Output
- Universal input 90VAC to 264VAC
- Low Leakage Current
- Double Fused

APPLICATIONS

- Computer Peripherals
- Telecommunications
- Tape Drives
- Test Instrumentation Product
- Data Acquisition
- Medical & Dental

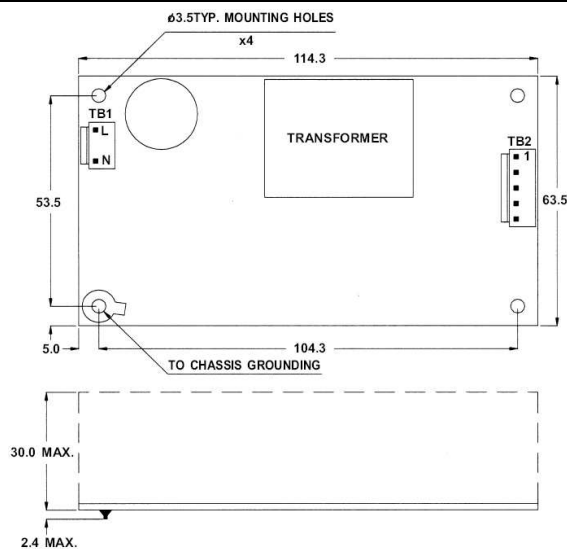


GENERAL SPECIFICATIONS

Input Voltage..... 90VAC to 264VAC
 Input Frequency..... 47Hz to 63Hz
 Inrush Current (cold)..... Less than 30A at 115VAC, 25°C
 Operating Temperature..... 0 to 70°C
 de-rated 2.5%/°C >50°C
 Storage Temperature..... -40°C to 85°C
 Cooling..... Free Air Convection
 Efficiency..... 78% to 87%
 Holdup Time..... >16ms at 115VAC
 Overvoltage Type..... Latch Off
 Overload Protection..... Auto recovery
 Short Circuit Protection..... Auto recovery
 Earth Leakage..... <300µA Max @ 240VAC
 Designed in full compliance with UL 60950-1,
 UL 60601-1,
 CSA 22.2 #60950-1,601.1
 EN60950-1,EN60601-1
 EMIFCC "B"
 EN55022 "B", EN55011 "B"

EMS.....EN61000-4-2,-3,-4,-5,-6,-8,-11
 Harmonics..... EN61000-3-2 Class A

MECHANICAL SPECIFICATIONS



Connector:
 AC input : JST B3P-VH Remove 1 pin or equivalent Size: 63.5mm x 114.3mm x 30mm
 2.5" x 4.5" x 1.18"
 DC output : Single output: Mounting Holes:
 JST B4P-VH or equivalent 53.5mm x 104.3mm
 Multiple Output 2.1" x 4.1"
 JST B6P-VH or equivalent

OUTPUT SPECIFICATIONS

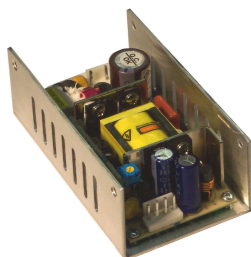
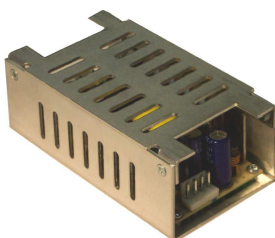
Model	Watts	Voltage (Vdc)	Output Rated (A)				Voltage Tolerance \pm	Ripple & Noise Pk to Pk	Regulation	
			Min.	Rate	Max	Peak			Line	Load
DY060-1	60	+5V	0	3	5	7	$\pm 1\%$	1%	$\pm 1\%$	$\pm 3\%$
		+12	0	3	4	6	$\pm 5\%$	1%	$\pm 1\%$	$\pm 3\%$
		-12	0	0.3		-	$\pm 5\%$	1%	$\pm 1\%$	$\pm 5\%$
DY060-6	60	+5V	0	10		15	$\pm 1\%$	1%	$\pm 1\%$	$\pm 1\%$
DY060-7	60	+12V	0	4.8		7.5	$\pm 1\%$	1%	$\pm 1\%$	$\pm 1\%$
		+5V	0	0.5		1	$\pm 5\%$	1%	$\pm 1\%$	$\pm 1\%$
DY060-7-1	60	+12V	0	5		7.5	$\pm 1\%$	1%	$\pm 1\%$	$\pm 1\%$
DY060-8	60	+15V	0	3.8		6.0	$\pm 1\%$	1%	$\pm 1\%$	$\pm 1\%$
		+5V	0	0.5		1	$\pm 5\%$	1%	$\pm 1\%$	$\pm 1\%$
DY060-8-1	60	+15V	0	4.0		6.0	$\pm 1\%$	1%	$\pm 1\%$	$\pm 1\%$
DY060-9	60	+24V	0	2.4		3.8	$\pm 1\%$	1%	$\pm 1\%$	$\pm 1\%$
		+5V	0	0.5		1	$\pm 5\%$	1%	$\pm 1\%$	$\pm 1\%$
DY060-9-1	60	+24V	0	2.5		3.8	$\pm 1\%$	1%	$\pm 1\%$	$\pm 1\%$
DY060-14	60	+48V	0	1.25		1.9	$\pm 1\%$	1%	$\pm 1\%$	$\pm 1\%$
DY060-D	60	+3.3V	0	5		7	$\pm 1\%$	1%	$\pm 1\%$	$\pm 3\%$
		+5V	0	4		5.5	$\pm 5\%$	1%	$\pm 1\%$	$\pm 3\%$
		+12V	0	1		-	$\pm 5\%$	1%	$\pm 1\%$	$\pm 5\%$
DY060-11	60	+5V	0	3	5	7	$\pm 1\%$	1%	$\pm 1\%$	$\pm 3\%$
		+24V	0	1.5	2	3	$\pm 5\%$	1%	$\pm 1\%$	$\pm 3\%$
		+12V	0	0.3			$\pm 5\%$	1%	$\pm 1\%$	$\pm 5\%$

Note: Contact factory for Safety Agency Approved status.

- Each output can provide up to peak load temporarily. Continuous operation at greater than rated load is not allowed.
- At factory, in 60% rated load condition, each output is checked to be within voltage accuracy.
- Line regulation is defined by changing $\pm 10\%$ of input voltage from nominal line at rated load.
- Load regulation is defined by changing $\pm 40\%$ of measured output load from 60% rated load.
- The ripple and noise is measured by using 15MHz bandwidth limited oscilloscope. Each output is terminated with a 0.47 μ F capacitor at rated load and nominal line.
- Hold up time is measured from the end of the last charging pulse to the time when the main output drops down to 95% output voltage at rated load and nominal line.
- Efficiency is measured at rated load.

DY060 SERIES 60 WATT— PIN ASSIGNMENT

Model \ Pin	1	2	3	4	5	6
DY060-1	+5V	+5V	GND	GND	+12V	-12V
DY060-6	+5V	+5V	+5V	GND	GND	GND
DY060-7	+12V	+12V	GND	GND	+5V	NC
DY060-7-1	+12V	+12V	GND	GND		
DY060-8	+15V	+15V	GND	GND	+5V	NC
DY060-8-1	+15V	+15V	GND	GND		
DY060-9	+24V	+24V	GND	GND	+5V	NC
DY060-9-1	+24V	+24V	GND	GND		
DY060-14	+48V	+48V	GND	GND		
DY060-D	+3.3V	+3.3V	GND	GND	+5V	+12V
DY060-11	+5V	+5V	GND	GND	+24V	+12V

ENCLOSURES (optional)
EUS

ECS


Our Standard power supplies, the DY060 Series, can be installed into a fully-enclosed chassis or in a 'U' shape chassis as an option. These options offer two mounting planes. The fully enclosed option helps to reduce radiated noise.

Example Part Number:
 DY060-9ECS or DY060-9EUS

*Note DY040 pictured in chassis