



Chipsmall Limited consists of a professional team with an average of over 10 year of expertise in the distribution of electronic components. Based in Hongkong, we have already established firm and mutual-benefit business relationships with customers from,Europe,America and south Asia,supplying obsolete and hard-to-find components to meet their specific needs.

With the principle of “Quality Parts,Customers Priority,Honest Operation,and Considerate Service”,our business mainly focus on the distribution of electronic components. Line cards we deal with include Microchip,ALPS,ROHM,Xilinx,Pulse,ON,Everlight and Freescale. Main products comprise IC,Modules,Potentiometer,IC Socket,Relay,Connector.Our parts cover such applications as commercial,industrial, and automotives areas.

We are looking forward to setting up business relationship with you and hope to provide you with the best service and solution. Let us make a better world for our industry!



Contact us

Tel: +86-755-8981 8866 Fax: +86-755-8427 6832

Email & Skype: info@chipsmall.com Web: www.chipsmall.com

Address: A1208, Overseas Decoration Building, #122 Zhenhua RD., Futian, Shenzhen, China

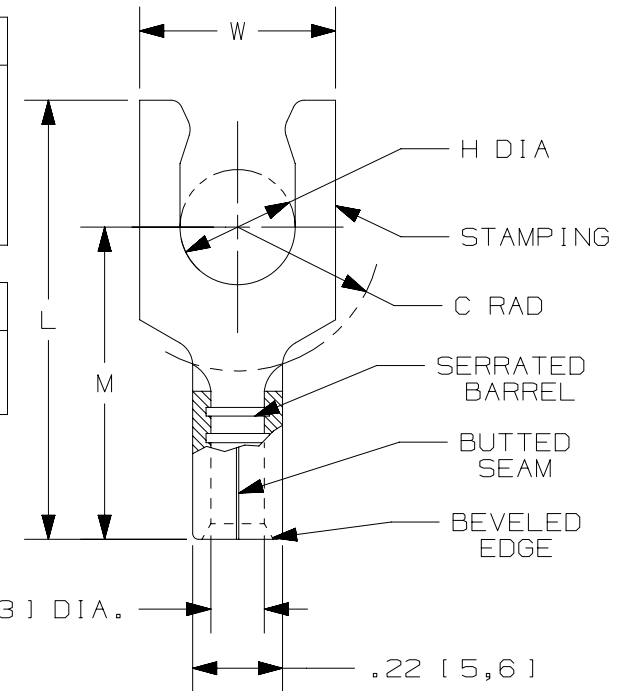


THIS COPY IS PROVIDED ON A RESTRICTED BASIS AND IS NOT TO BE USED IN ANY WAY DETRIMENTAL TO THE INTERESTS OF PANDUIT CORP.

PANDUIT PART #	STUD SIZE	DIMENSIONS in. [mm]				
		L ± .02 [0,5]	W ± .01 [0,3]	C ± .02 [0,5]	M ± .02 [0,5]	H ± .01 [0,3]
E10-6LFB	#6	.77 [19,6]	.30 [7,6]	.23 [5,8]	.53 [13,5]	.14 [3,6]
E10-8LFB	#8	.79 [20,1]	.30 [7,6]	.23 [5,8]	.53 [13,5]	.16 [4,1]
E10-10LFB	#10	.79 [20,1]	.34 [8,6]	.23 [5,8]	.53 [13,5]	.19 [4,8]
E10-14LFB	1/4"	.92 [23,4]	.46 [11,7]	.33 [8,4]	.63 [16,0]	.25 [6,4]

UL & CSA TOOLS
 CT-100A
 CT-200
 CT-600-A (CT-570CH)
 CT-1570
 CT-1701 (P10)
 CT-2500 (CT-2570CH)

PANDUIT APPROVED TOOLS
 CT-160
 CT-260



NOTES:

- UL LISTED & CSA CERTIFIED FOR:
 - #12-10 AWG [4,0-6,0mm²] SOLID OR STRANDED COPPER WIRE
 - 302°F [150°C] MAX OPERATING TEMPERATURE
 - 2000 VOLTS MAX
- MATERIAL:
 - STAMPING: .04" [1,0] THK COPPER, TIN PLATED
- WIRE STRIP LENGTH: 9/32" ^{+1/32}₋₀ [7,1mm ^{+0,8}₋₀]
- SEE www.panduit.com FOR PACKAGE QUANTITIES
- DIMENSIONS IN BRACKETS ARE METRIC EQUIVALENT



TITLE	
STRONGHOLD LOCKING FORK TERMINALS NON-INSULATED, BUTTED SEAM, #12-10 AWG	
CUSTOMER DRAWING	
ITEM REVISION NAME	00123SHQ/00
DATASET FILE NAME	00123SHQ_DC/00
UNLESS OTHERWISE SPECIFIED, DIMENSIONAL TOLERANCES ARE: IN [mm]	
.X ±	.XXX ±
.XX ±	ANGLES ±
THIRD ANGLE PROJECTION	
DRAWING NUMBER: SH41287	
DRAWN BY	DATE
JHNU	2/18
CHK	SCALE
TMR	N.T.S.
SHEET 1 OF 1	
SIZE A	

REV	DATE	BY	CHK	APR	DESCRIPTION	ECN
00	2/18	JHNU	TMR	RGB	RELEASED	00123SH

D10100DX/12