



Chipsmall Limited consists of a professional team with an average of over 10 year of expertise in the distribution of electronic components. Based in Hongkong, we have already established firm and mutual-benefit business relationships with customers from,Europe,America and south Asia,supplying obsolete and hard-to-find components to meet their specific needs.

With the principle of “Quality Parts,Customers Priority,Honest Operation,and Considerate Service”,our business mainly focus on the distribution of electronic components. Line cards we deal with include Microchip,ALPS,ROHM,Xilinx,Pulse,ON,Everlight and Freescale. Main products comprise IC,Modules,Potentiometer,IC Socket,Relay,Connector.Our parts cover such applications as commercial,industrial, and automotives areas.

We are looking forward to setting up business relationship with you and hope to provide you with the best service and solution. Let us make a better world for our industry!



Contact us

Tel: +86-755-8981 8866 Fax: +86-755-8427 6832

Email & Skype: info@chipsmall.com Web: www.chipsmall.com

Address: A1208, Overseas Decoration Building, #122 Zhenhua RD., Futian, Shenzhen, China

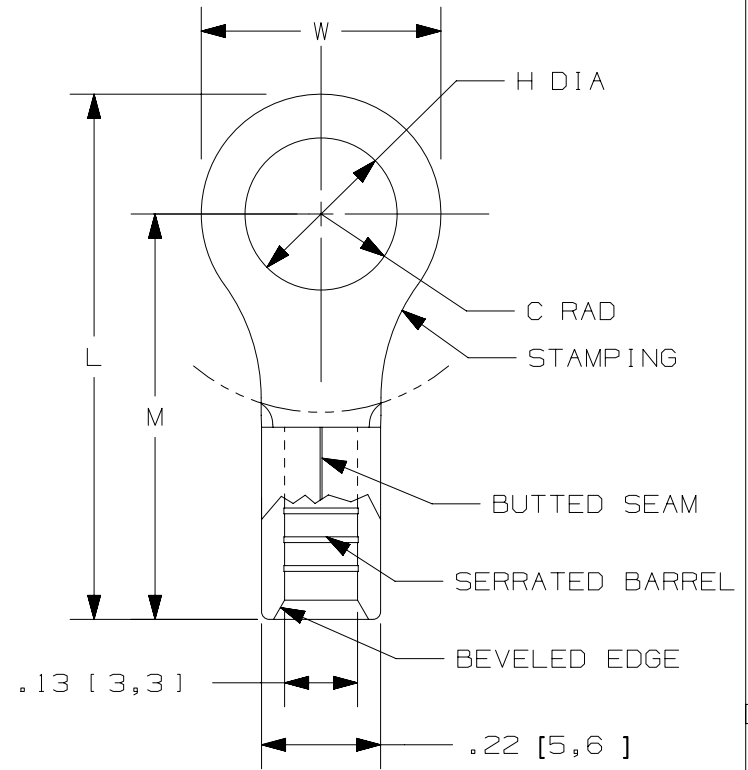


THIS COPY IS PROVIDED ON A RESTRICTED BASIS AND IS NOT TO BE USED IN ANY WAY DETRIMENTAL TO THE INTERESTS OF PANDUIT CORP.

PANDUIT PART #	STUD SIZE		DIMENSIONS in. [mm]				
	ENGLISH	METRIC	L ± .03 [0,76]	W ± .01 [0,25]	C ± .02 [0,51]	M ± .03 [0,76]	H ± .01 [0,25]
E10-6RB	#6	M3	.78 [19,8]	.31 [7,9]	.31 [7,9]	.62 [15,8]	.15 [3,8]
E10-8RB	#8	M4	.78 [19,8]	.31 [7,9]	.31 [7,9]	.62 [15,8]	.17 [4,3]
E10-10RB	#10	M5	.81 [20,6]	.38 [9,7]	.31 [7,9]	.62 [15,8]	.20 [5,1]
E10-14RB	1/4"	M6	.96 [24,4]	.52 [13,2]	.38 [9,7]	.70 [17,8]	.27 [6,9]

NOTES:

- USED FOR:
 - 12-10 AWG [4,0-6,0 mm²] SOLID OR STRANDED COPPER WIRE
 - 302°F [150°C] MAX. TEMP. RATING
 - 2000V MAX VOLTAGE
- MATERIAL:
 - STAMPING: .04" [1,0] THK COPPER, TIN PLATED
- INSTALLATION TOOLS:
 - UL LISTED AND CSA CERTIFIED:
 - CT-100A, CT-200, CT-600-A (CT-570CH)
 - CT-1570, CT-1701, CT-2500 (CT-2570CH)
 - PANDUIT APPROVED: CT-160, CT-260
- WIRE STRIP LENGTH: 9/32" ^{+1/32}₋₀ [7,1mm ^{+0,8}₋₀]
- SEE www.panduit.com FOR PACKAGE QUANTITIES INDICATED BY PART NUMBER SUFFIX
- DIMENSIONS IN BRACKETS ARE METRIC EQUIVALENT



LISTED
587H
E52164



CERTIFIED
LR31212

00	2/18	JHNU	TMR	RGB	RELEASED			00123SH	
REV	DATE	BY	CHK	APR	DESCRIPTION			ECN	

TITLE STRONGHOLD RING TERMINALS NON-INSULATED, BUTTED SEAM #12-10 AWG CUSTOMER DRAWING	
ITEM REVISION NAME 00123STC/00	PANDUIT TM
DATASET FILE NAME 00123STC_DC/00	
UNLESS OTHERWISE SPECIFIED, DIMENSIONAL TOLERANCES ARE: IN [mm] .x ± .1 [2.54] .xxx ± .005 [.13] .xx ± .01 [.25] ANGLES ± 5°	
DRAWING NUMBER: SH41188	
DRAWN BY JHNU	DATE 2/18
CHK TMR	SCALE N.T.S.
SHEET 1 OF 1	
SIZE A	

D101000DA/12