



Chipsmall Limited consists of a professional team with an average of over 10 year of expertise in the distribution of electronic components. Based in Hongkong, we have already established firm and mutual-benefit business relationships with customers from,Europe,America and south Asia,supplying obsolete and hard-to-find components to meet their specific needs.

With the principle of “Quality Parts,Customers Priority,Honest Operation,and Considerate Service”,our business mainly focus on the distribution of electronic components. Line cards we deal with include Microchip,ALPS,ROHM,Xilinx,Pulse,ON,Everlight and Freescale. Main products comprise IC,Modules,Potentiometer,IC Socket,Relay,Connector.Our parts cover such applications as commercial,industrial, and automotives areas.

We are looking forward to setting up business relationship with you and hope to provide you with the best service and solution. Let us make a better world for our industry!



Contact us

Tel: +86-755-8981 8866 Fax: +86-755-8427 6832

Email & Skype: info@chipsmall.com Web: www.chipsmall.com

Address: A1208, Overseas Decoration Building, #122 Zhenhua RD., Futian, Shenzhen, China



Sealed Miniature Rocker and Lever Handle Switches

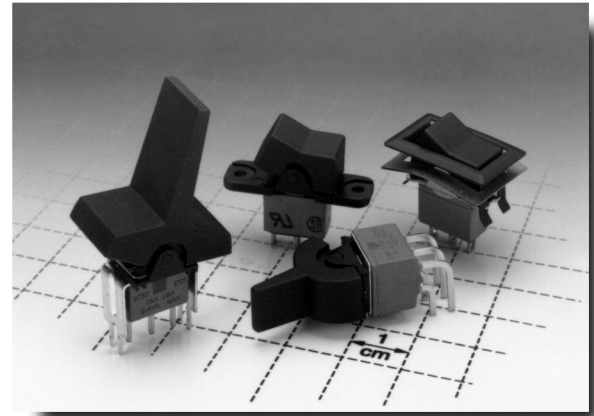


Features/Benefits

- Sealed against solder and cleaning process contaminants
- ESD Resistance—all actuator options
- Rocker, case & bushing UL 94V-0

Typical Applications

- Telecommunications
- Instrumentation
- Computers & peripherals



Build-A-Switch

Our easy Build-A-Switch concept allows you to mix and match options to create the switch you need. Below is a complete listing of options shown in catalog. To order, simply select desired option from each category and place in the appropriate box. Switches with standard options are shown on pages F-24 and F-25. Available options are shown and described on pages F-25 thru F-35. For additional options not shown in catalog, consult Customer Service Center. All models are process sealed to withstand machine soldering temperatures and pressure wash cleaning methods.

Typical Example: E 1 0 1 — J 1 — Z — Q — E — 2 —

Switch Function

- E101** (STD.) SP On-None-On
- E201** (STD.) DP On-None-On
- E301** (STD.) 3P On-None-On
- E103** SP On-Off-On
- E105** SP Mom.-Off-Mom.
- E107** SP On-Off-Mom.
- E108** SP On-None-Mom.
- E203** DP On-Off-On
- E205** DP Mom.-Off-Mom.
- E207** DP On-Off-Mom.
- E208** DP On-None-Mom.
- E211** DP On-On-On
- E213** DP On-On-Mom.
- E215** DP Mom.-On-Mom.
- E303** 3P On-Off-On
- E305** 3P Mom.-Off-Mom.
- E307** 3P On-Off-Mom.
- E308** 3P On-None-Mom.

Actuator

- J1** (STD.) Rocker
- J2** Lever
- J3** Rocker
- J8** Rocker
- J11** Rocker with frame
- J21** Lever with frame
- J50** Rocker
- J60** Lever
- J90** Lever

Terminations

- A** (STD.) Right angle, PC thru-hole
- AV2** (STD.) Vertical right angle, PC thru-hole
- C** (STD.) PC Thru-hole
- Z** (STD.) Solder lug
- A3** Right angle, snap-in, PC thru-hole
- AV3** Vertical right angle, snap-in, PC thru-hole
- AW** Right angle, extended, PC thru-hole
- AW1** Right angle, extended, PC thru-hole
- AW3** Right angle, extended, PC thru-hole
- AW4** Right angle, extended, PC thru-hole
- V2** .555" high, V-bracket
- V3** .460" high, V-bracket
- V4** .630" high, V-bracket
- V5** Vertical right angle, PC thru-hole
- V6** .460" high, V-bracket
- V7** .630" high, V-bracket
- V8** .953" high, V-bracket
- V9** 1.150" high, V-bracket
- V21** .555" high, V-bracket, snap-in
- V31** .460" high, V-bracket, snap-in
- V41** .630" high, V-bracket, snap-in
- V51** Vertical right angle, snap-in
- V54** Vertical right angle, extended
- V55** Vertical right angle, extended
- V61** .460" high, V-bracket, snap-in
- V71** .630" high, V-bracket, snap-in
- V81** .953" high, V-bracket, snap-in
- V91** 1.150" high, V-bracket, snap-in
- W** .750" long, wire wrap
- W1** .964" long, wire wrap
- W3** .425" long, wire wrap
- W4** 1.062" long, wire wrap
- W5** 1.305" long, wire wrap
- Z3** Quick connect

Contact Material

- B** (STD.) Gold
- Q** (STD.) Silver
- K** Gold
- M** Silver
- G** Gold over silver
- L** Gold over silver

Seal

- E** (STD.) Epoxy

Actuator Color

- 2** (STD.) Black
- 1** White
- 3** Red

Frame Color

- 2** (STD.) Black
- NONE** No frame color required
- 1** White

Metal Frame Color (J11, J21 Actuators)

- 2** (STD.) Black
- 1** White
- C** Bright chrome
- S** Satin chrome



F

Rocker

C&K E Series

Sealed Miniature Rocker and Lever Handle Switches

Specifications

CONTACT RATING: B contact material: 0.4 VA max. @ 20 V AC or DC max. Q contact material (E1XX & E2XX Models): 7.5 AMPS @ 125 V AC or 28 V DC; 3 AMPS @ 250 V AC. (E3XX Models): 5 AMPS @ 125 V AC or 28 V DC; 2 AMPS @ 250 V AC. See page F-35 for additional ratings.

ELECTRICAL LIFE: E1XX and E2XX models: 40,000 make-and-break cycles at full load. E3XX models: 30,000 cycles.

CONTACT RESISTANCE: Below 10 milliohms typ. initial @ 2-4 V DC, 100 mA, for both silver and gold plated contacts.

INSULATION RESISTANCE: 10^9 ohms min.

ELECTROSTATIC DISCHARGE (ESD) OPTION: All actuator options: 15,000 V DC max. @ sea level, actuator to terminals.

DIELECTRIC STRENGTH: 1000 V RMS min. @ sea level.

OPERATING TEMPERATURE: -30°C to 85°C .

SOLDERABILITY: Per MIL-STD-202F method 208D, or EIA RS-186E method 9 (1 hour steam aging).

Materials

CASE & BUSHING: Glass filled nylon 6/6, flame retardant, heat stabilized (UL 94V-0).

ACTUATOR: Nylon, black standard, internal o-ring seal standard with all actuators.

FRAME: Spring steel, black standard.

SWITCH SUPPORT: Brass or steel, tin plated.

ACTUATOR PIVOT & MOUNTING BRACKET: Nylon.

ACTUATOR PIVOT RETAINER: Stainless steel.

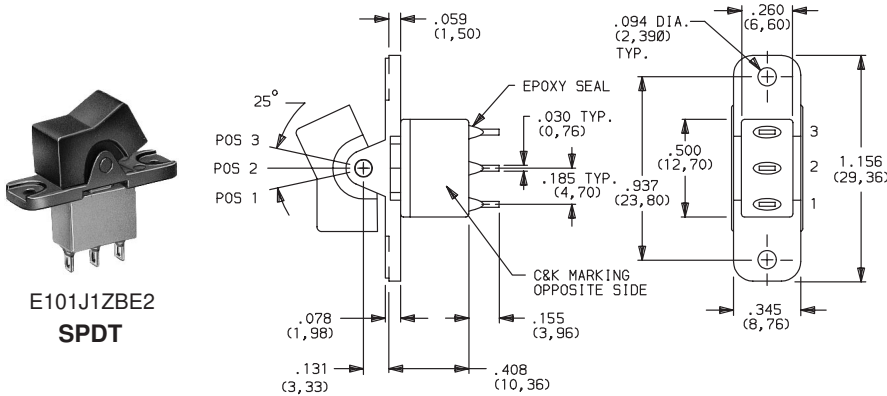
CONTACTS & TERMINALS: B contact material: Copper alloy, with gold plate over nickel plate. Q contact material: Copper alloy, silver plated. See page F-35 for additional contact materials.

TERMINAL SEAL: Epoxy.

HARDWARE: Nut, Screw & Lockwasher: Stainless steel. Standoff: Nylon standard, aluminum available, consult Customer Service Center.

NOTE: Specifications and materials listed above are for switches with standard options. For information on specific and custom switches, consult Customer Service Center.

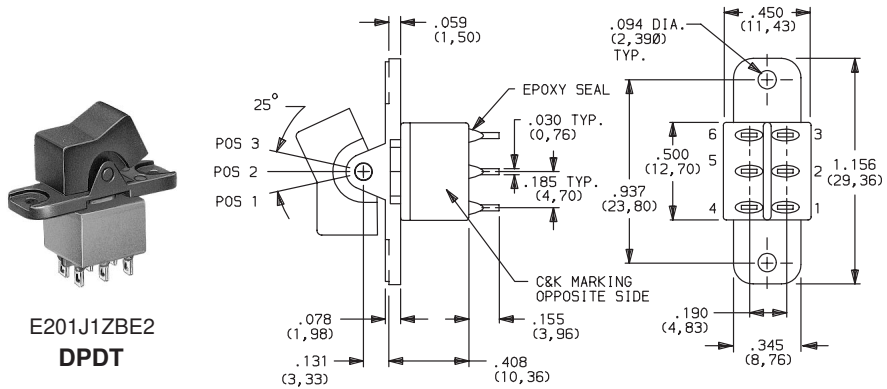
SWITCHES WITH STANDARD OPTIONS



E101J1ZBE2
SPDT

PART NUMBER	FUNCTION	POS. 1	POS. 2	POS. 3
E101J1ZBE2	SPDT	ON	NONE	ON

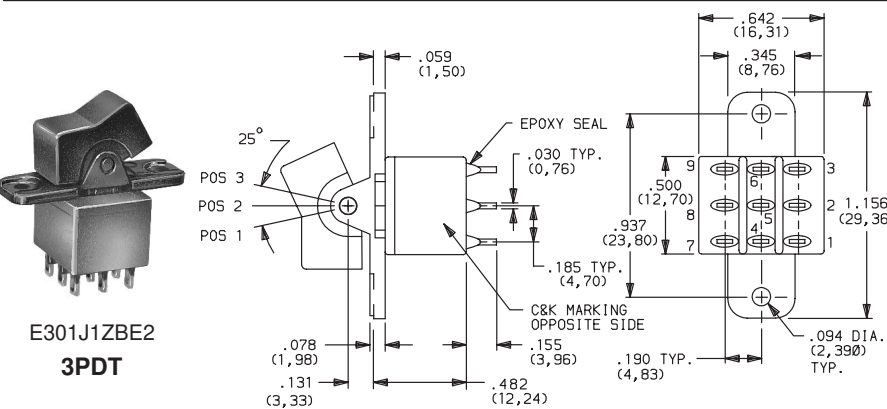
NOTE: For PC termination, replace 'Z' with 'C'.
For panel mounting information, see page F-26.



E201J1ZBE2
DPDT

PART NUMBER	FUNCTION	POS. 1	POS. 2	POS. 3
E201J1ZBE2	DPDT	ON	NONE	ON

NOTE: For PC termination, replace 'Z' with 'C'.
For panel mounting information, see page F-26.



E301J1ZBE2
3PDT

PART NUMBER	FUNCTION	POS. 1	POS. 2	POS. 3
E301J1ZBE2	3PDT	ON	NONE	ON

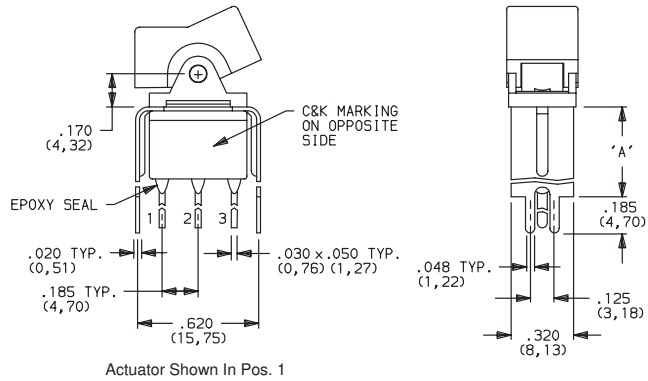
NOTE: For PC termination, replace 'Z' with 'C'.
For panel mounting information, see page F-26.

C&K E Series Sealed Miniature Rocker and Lever Handle Switches

SWITCHES WITH STANDARD OPTIONS

PART NUMBER	FUNCTION	POS. 1	POS. 2	POS. 3
E101J1V3BE2	SPDT	ON	NONE	ON

NOTE: For PC mounting information, see page F-34.

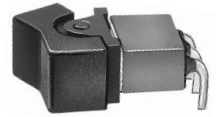
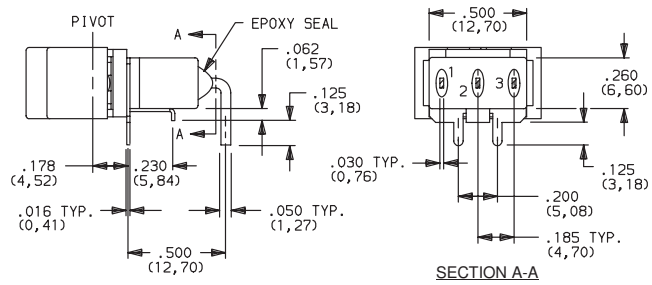


**E101J1V3BE2
SPDT**

PART NUMBER	FUNCTION	POS. 1	POS. 2	POS. 3
E101J1ABE2 E103J1ABE2 E105J1ABE2 E107J1ABE2	SPDT	ON ON MOM. ON	NONE OFF OFF OFF	ON ON MOM. MOM.

MOM. = Momentary

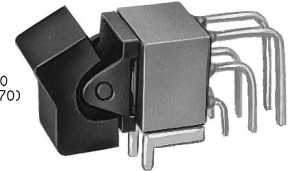
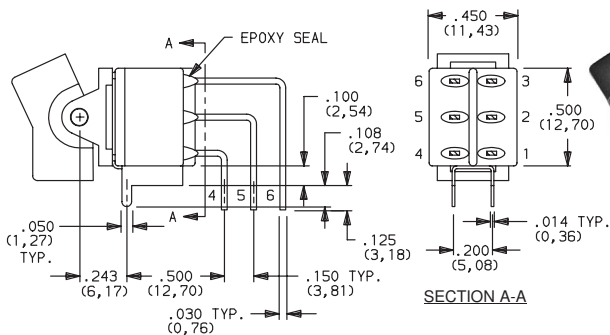
NOTE: For PC mounting information, see page F-29.



**E101J1ABE2
Horizontal Actuation
SPDT**

PART NUMBER	FUNCTION	POS. 1	POS. 2	POS. 3
E201J1AV2QE2	DPDT	ON	NONE	ON

NOTE: For PC mounting information, see page F-31.



**E201J1AV2BE2
Vertical Actuation
DPDT**

SWITCH FUNCTION

NO. POLES	MODEL NO.	SWITCH FUNCTION			CONNECTED TERMINALS			SCHEMATIC
		POS. 1	POS. 2	POS. 3	POS. 1	POS. 2	POS. 3	
SP	E101 (STD.)	ON	NONE	ON				
	E103	ON	OFF	ON				
	E105	MOM.	OFF	MOM.	2-3	OPEN	2-1	
	E107	ON	OFF	MOM.				
	E108	ON	NONE	MOM.				

MOM. = Momentary

All models with all options when ordered with G, L, M or Q contact material.

** Wiring for 3-way switch, see page L-29.

C&K E Series Sealed Miniature Rocker and Lever Handle Switches

SWITCH FUNCTION

NO. POLES	MODEL NO.	SWITCH FUNCTION			CONNECTED TERMINALS			SCHEMATIC
		POS. 1	POS. 2	POS. 3	POS. 1	POS. 2	POS. 3	
DP	E201 (STD.)	ON	NONE	ON	2-3,5-6	OPEN	2-1,5-4	
	E203	ON	OFF	ON				
	E205	MOM.	OFF	MOM.				
	E207	ON	OFF	MOM.				
	E208	ON	NONE	MOM.	2-3,5-6	2-3,5-4	2-1,5-4	
	E211**	ON	ON	ON				
	E213**	ON	ON	MOM.				
	E215**	MOM.	ON	MOM.				
3P	E301 (STD.)	ON	NONE	ON	2-3,5-6,8-9	OPEN	2-1,5-4,8-7	
	E303	ON	OFF	ON				
	E305	MOM.	OFF	MOM.				
	E307	ON	OFF	MOM.				
	E308	ON	NONE	MOM.				

MOM. = Momentary

All models with all options when ordered with G, L, M or Q contact material.

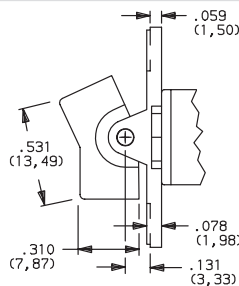
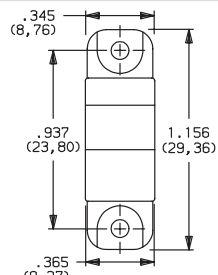
** Wiring for 3-way switch, see page L-29.

ACTUATOR—PANEL REAR MOUNT

ACTUATOR COLOR

ACTUATOR

J1 (STD.) ROCKER

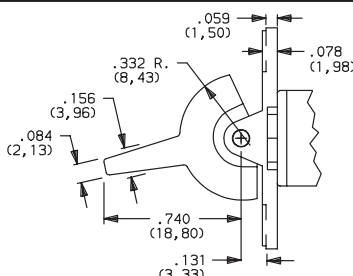
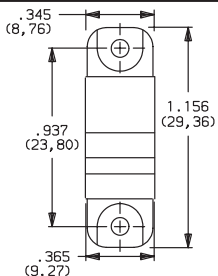


OPTION CODE	ACTUATOR COLOR
2	(STD.) BLACK
1	WHITE
3	RED

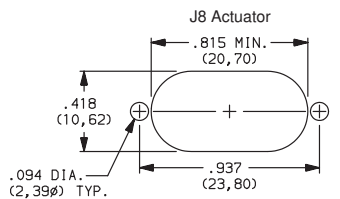
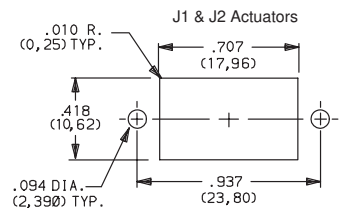
Finish: Matte. Other colors, custom actuator markings and legends available, consult Customer Service Center.

NOTE: Hardware: two each—mounting screws, nuts, lockwashers and standoffs for 1/8 inch thick panel are supplied standard on switches with panel mounting bracket. Internal o-ring actuator seal standard. Actuators and hardware are available separately, see section L. J1, J2 & J8 actuators available with C, W-W5, Z or Z3 terminations.

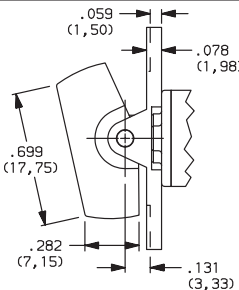
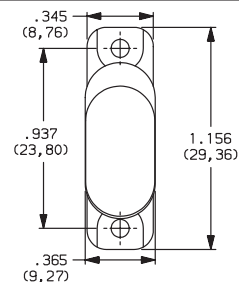
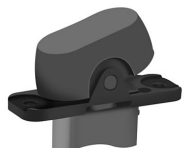
J2 LEVER



PANEL MOUNTING

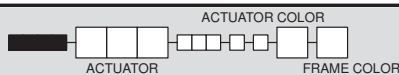


J8 ROCKER



C&K E Series Sealed Miniature Rocker and Lever Handle Switches

ACTUATOR—REAR MOUNT



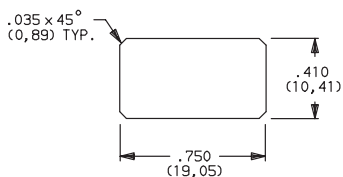
OPTION CODE	ACTUATOR COLOR
2	(STD.) BLACK
1	WHITE
3	RED

OPTION CODE	FRAME COLOR
2	(STD.) BLACK
1	WHITE
C	BRIGHT CHROME
S	SATIN CHROME

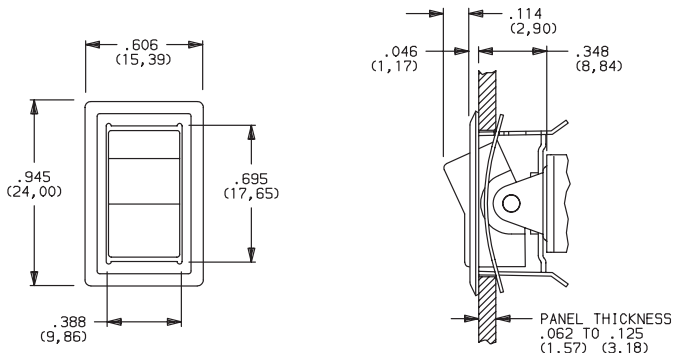
Actuator finish: Matte, frame finish: gloss. Other colors, custom actuator markings and legends available, consult Customer Service Center.

NOTE: Internal o-ring actuator seal standard. Frames are available separately, see section L. J11 & J21 actuators available with C, W-W5, Z & Z3 terminations.

PANEL MOUNTING

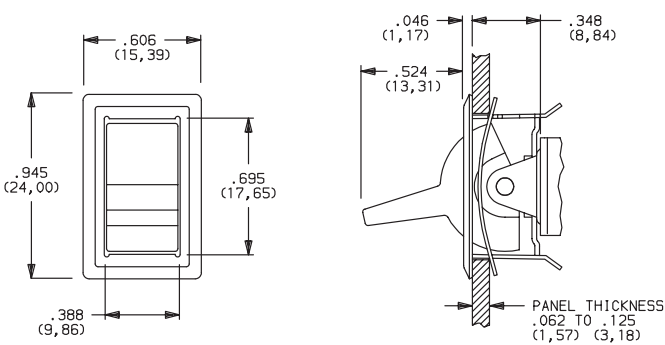


J11 ROCKER WITH FRAME



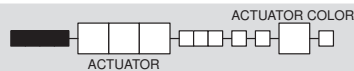
NOTE: This option has reduced anti-static capability.

J21 LEVER WITH FRAME



NOTE: This option has reduced anti-static capability.

ACTUATOR—PC MOUNT

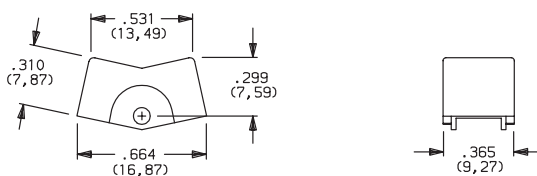


OPTION CODE	ACTUATOR COLOR
2	(STD.) BLACK
1	WHITE
3	RED

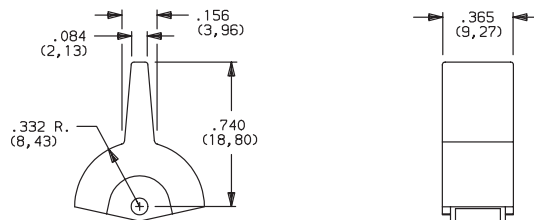
Finish: Matte. Other colors, custom actuator markings and legends available, consult Customer Service Center.

NOTE: Hardware: two each—mounting screws, nuts, lockwashers and standoffs for 1/8 inch thick panel are supplied standard on switches with panel mounting bracket. Internal o-ring actuator seal standard. Actuators and hardware are available separately, see section L. J1, J2 & J8 actuators available with A, A3, AV2, AV3, V2-V91 & AW-AW4 terminations.

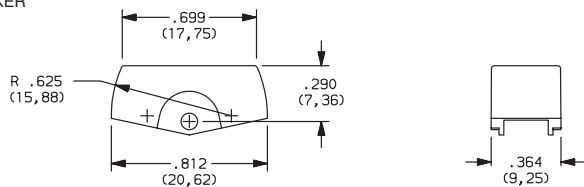
J1 ROCKER



J2 LEVER



J8 ROCKER

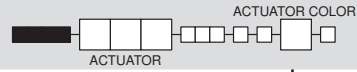


F

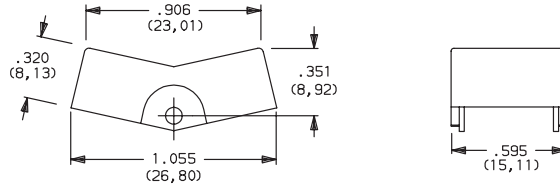
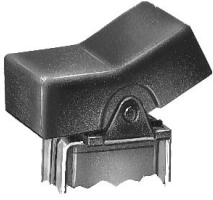
Rocker

C&K E Series Sealed Miniature Rocker and Lever Handle Switches

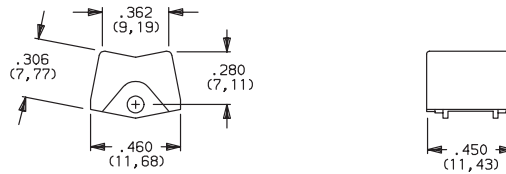
ACTUATOR—PC MOUNT



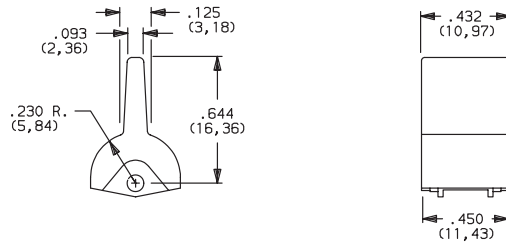
J3 ROCKER



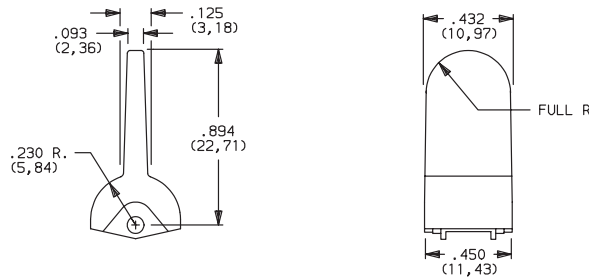
J50 ROCKER



J60 LEVER



J90 LEVER



OPTION CODE	ACTUATOR COLOR
2	(STD.) BLACK
1	WHITE
3	RED

Finish: Matte. Other colors, custom actuator markings and legends available, consult Customer Service Center.

NOTE: Hardware: two each—mounting screws, nuts, lockwashers and standoffs for 1/8 inch thick panel are supplied standard on switches with panel mounting bracket. Internal o-ring actuator seal standard. Actuators and hardware are available separately, see section L.

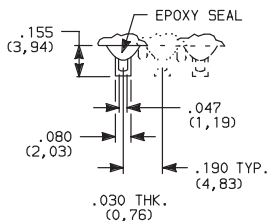
J3 actuators available with AV2, AV3 & V2-V91 terminations. Some permissible actuator/termination combinations may lack clearance between actuator and PC board, and care must be exercised to accommodate this condition.

J50, J60 & J90 actuators available with A, AV2, AV3 & AW-AW4 terminations.

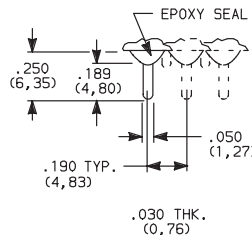
TERMINATIONS



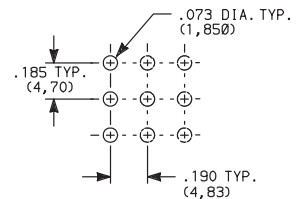
Z (STD.) SOLDER LUG



C (STD.) PC THRU-HOLE



PC MOUNTING



SPDT thru 3PDT

Not available with K, L or M contact materials. Available actuators, see page F-26.

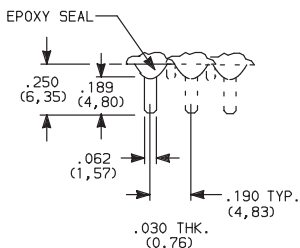
SPDT thru 3PDT

NOTE: Available actuators, see pages, F-27 and F-28.

C&K E Series Sealed Miniature Rocker and Lever Handle Switches

TERMINATIONS

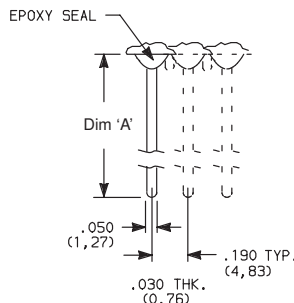
Z3 QUICK CONNECT



Not available with K, L or M contact materials.
Available actuators, see pages F-27 and F-28. Mating quick connector available; order part number 530100000.

SPDT thru 3PDT

W, W1, W3, W4, W5 WIRE WRAP

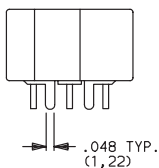


OPTION CODE	DIM 'A'
W	.750 (19,05)
W1	.964 (24,48)
W3	.425 (10,80)
W4	1.062 (26,97)
W5	1.305 (33,15)

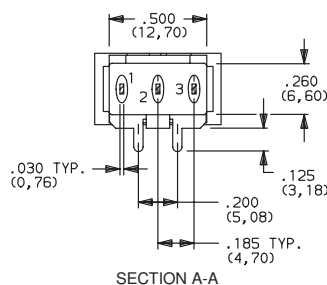
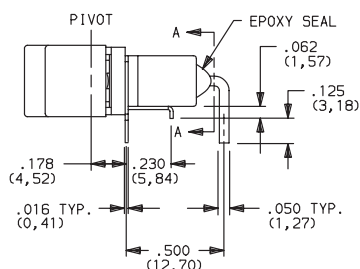
SPDT thru 3PDT

NOTE: Available actuators, see pages F-27 and F-28.

A (STD.) RIGHT ANGLE, PC THRU-HOLE

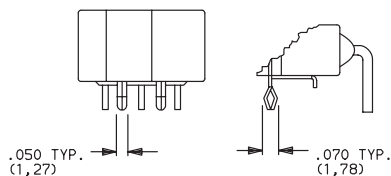


Actuator Shown In Pos. 1

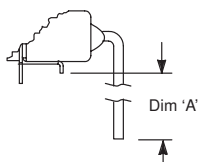


E101J1ABE2
Horizontal Actuation
SPDT

A3 RIGHT ANGLE, SNAP-IN, PC THRU-HOLE

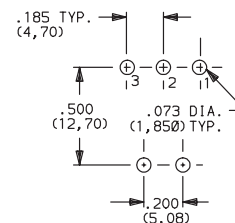


AW, AW1, AW3, AW4 RIGHT ANGLE, EXTENDED, PC THRU-HOLE



OPTION CODE	DIM 'A'
AW	.44 (11,2)
AW1	.66 (16,8)
AW3	.14 (3,6)
AW4	.77 (19,6)

PC MOUNTING



NOTE: PC mounting pattern must clear switch support leg.

NOTE: Not available with J3, J50, J60 and J90 actuators.
Available actuators, see pages F-27 and F-28.
Terminal bend radii and lead-in manufacturing option.



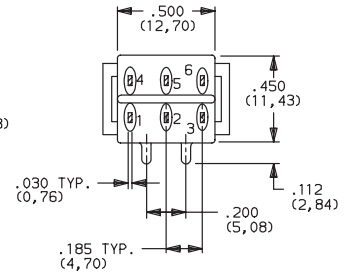
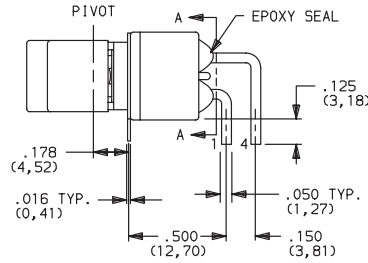
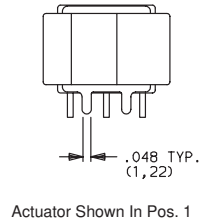
C&K E Series Sealed Miniature Rocker and Lever Handle Switches

TERMINATIONS

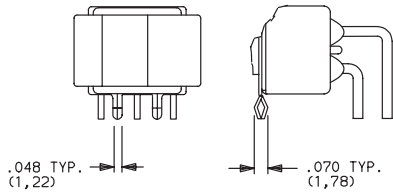
A (STD.) RIGHT ANGLE, PC THRU-HOLE



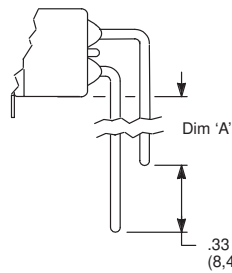
E201J1ABE2
Horizontal Actuation
DPDT



A3 RIGHT ANGLE, SNAP-IN, PC THRU-HOLE

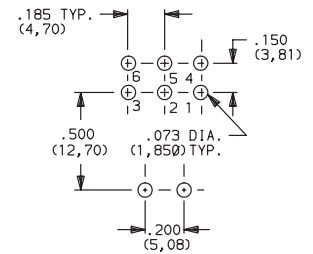


AW, AW1, AW4, AW5 RIGHT ANGLE, EXTENDED, PC THRU-HOLE



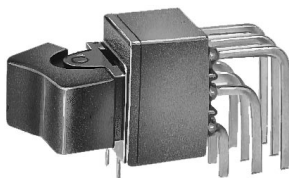
OPTION CODE	DIM 'A'
AW	.21 (5,3)
AW1	.42 (10,7)
AW4	.52 (13,2)
AW5	.76 (19,3)

PC MOUNTING

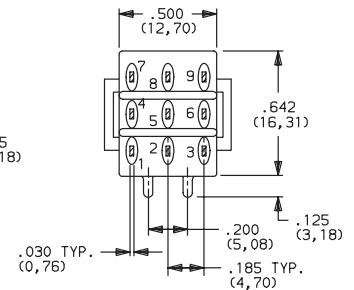
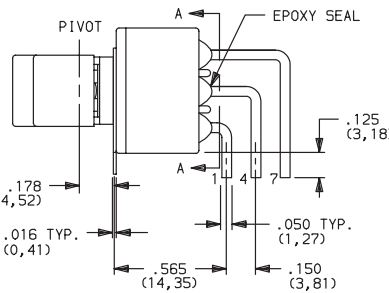
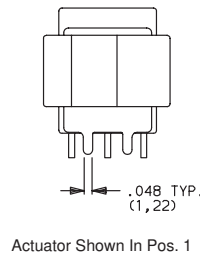


NOTE: NOTE: Not available with J3 actuator.
Available actuators, see pages F-27 and F-28.
Terminal bend radii and lead-in manufacturing option.

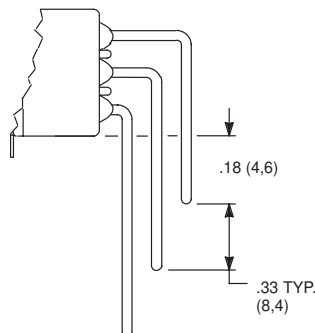
A (STD.) RIGHT ANGLE, PC THRU-HOLE



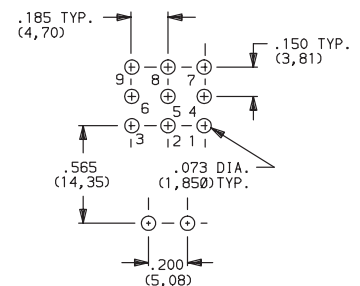
E301J1ABE2
Horizontal Actuation
3PDT



AW4, AW5 RIGHT ANGLE, EXTENDED, PC THRU-HOLE



PC MOUNTING



NOTE: Terminal bend radii and lead-in manufacturing option.
Available actuators, see pages F-27 and F-28.

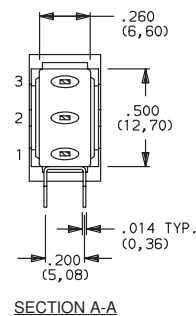
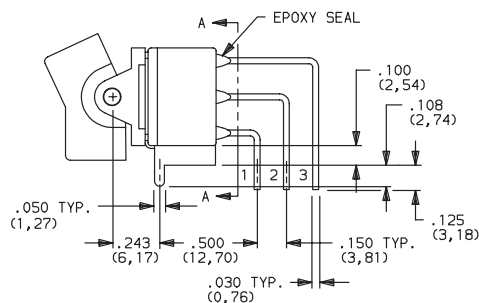
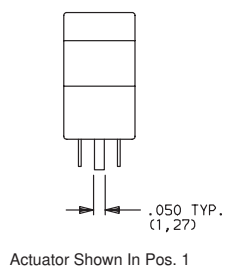


Rocker

C&K E Series Sealed Miniature Rocker and Lever Handle Switches

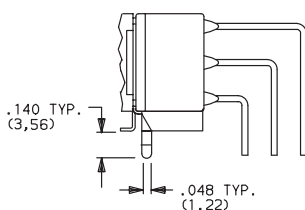
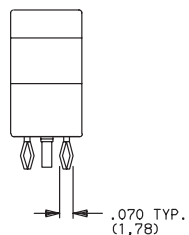
TERMINATIONS

AV2 (STD.) VERTICAL RIGHT ANGLE, PC THRU-HOLE, .150" PITCH

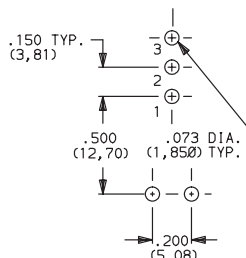


E101J1AV2BE2
Vertical Actuation
SPDT

AV3 VERTICAL RIGHT ANGLE, SNAP-IN, PC THRU-HOLE, .150" PITCH

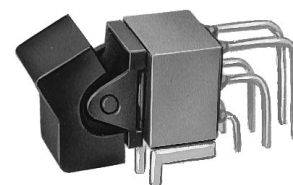
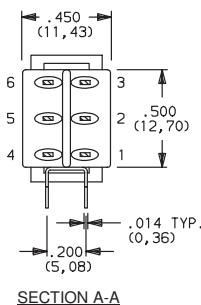
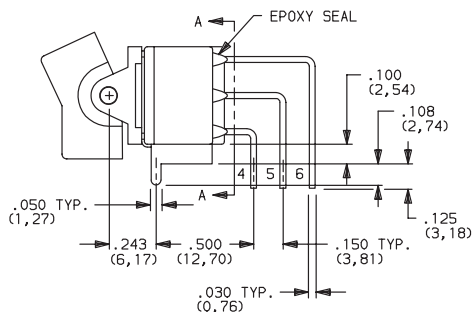
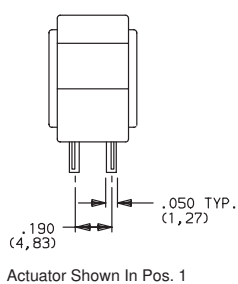


PC MOUNTING



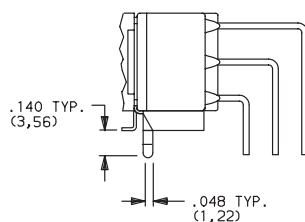
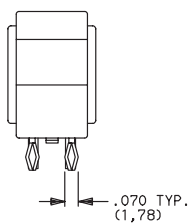
NOTE: Terminal bend radii and lead-in manufacturing option. Available actuators, see pages F-27 and F-28.

AV2 (STD.) VERTICAL RIGHT ANGLE, PC THRU-HOLE, .150" PITCH

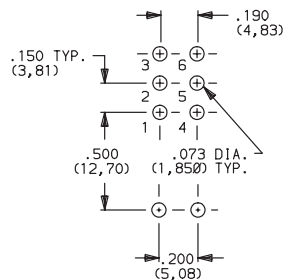


E201J1AV2BE2
Vertical Actuation
DPDT

AV3 VERTICAL RIGHT ANGLE, SNAP-IN, PC THRU-HOLE, .150" PITCH



PC MOUNTING

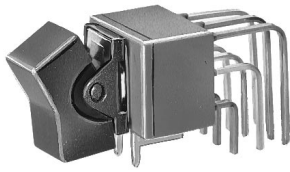


NOTE: Terminal bend radii and lead-in manufacturing option. Available actuators, see pages F-27 and F-28.

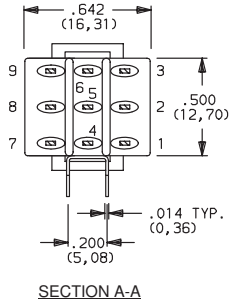
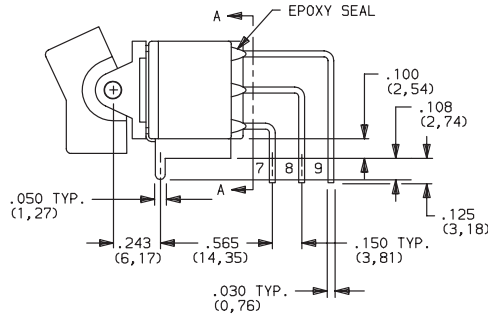
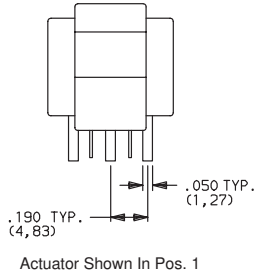
C&K E Series Sealed Miniature Rocker and Lever Handle Switches

TERMINATIONS

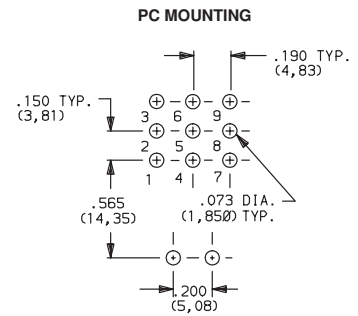
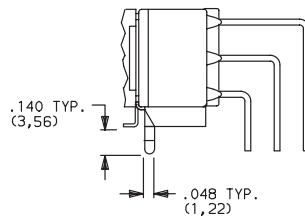
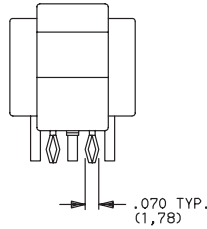
AV2 (STD.) VERTICAL RIGHT ANGLE, PC THRU-HOLE,
.150" PITCH



E301J1AV2BE2
Vertical Actuation
3PDT

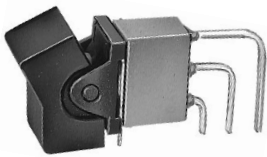


AV3 VERTICAL RIGHT ANGLE, SNAP-IN, PC THRU-HOLE,
.150" PITCH

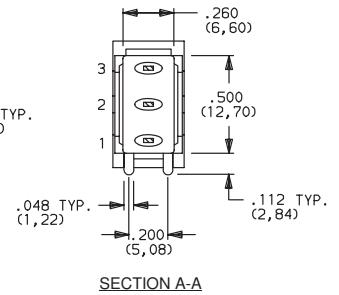
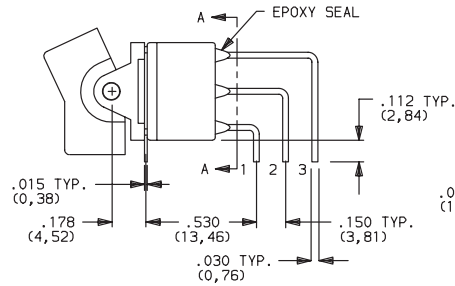
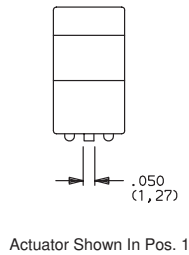


NOTE: Terminal bend radii and lead-in manufacturing option.
Available actuators, see pages F-27 and F-28.

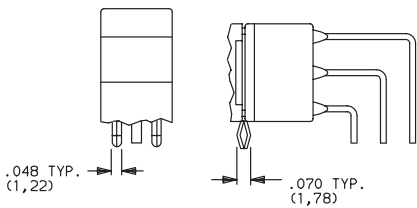
V5 VERTICAL RIGHT ANGLE, PC THRU-HOLE,
.150" PITCH



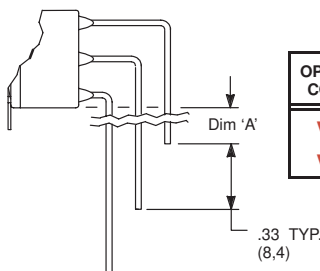
E101J1V5BE2
Vertical Actuation
SPDT



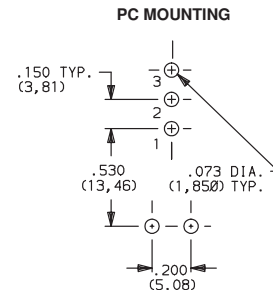
V51 VERTICAL RIGHT ANGLE, SNAP-IN,
PC THRU-HOLE, .150" PITCH



V54, V55 VERTICAL RIGHT ANGLE, EXTENDED,
PC THRU-HOLE, .150" PITCH



OPTION CODE	DIM 'A'
V54	.18 (4,6)
V55	.42 (10,7)

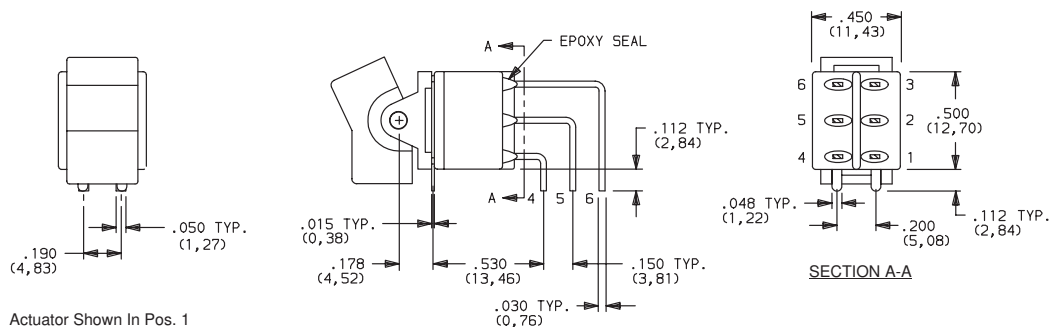


NOTE: Terminal bend radii and lead-in manufacturing option.
Available actuators, see pages F-27 and F-28.

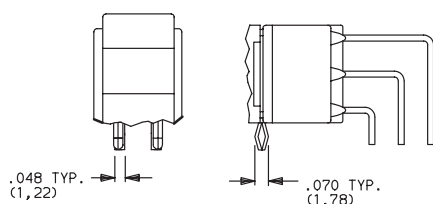
C&K E Series Sealed Miniature Rocker and Lever Handle Switches

TERMINATIONS

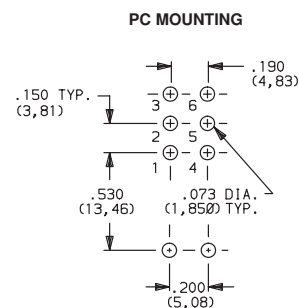
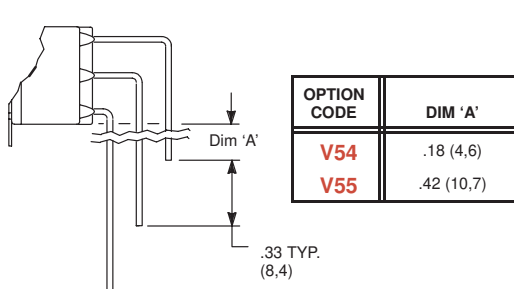
V5 VERTICAL RIGHT ANGLE, PC THRU-HOLE, .150" PITCH



V51 VERTICAL RIGHT ANGLE, SNAP-IN, PC THRU-HOLE, .150" PITCH



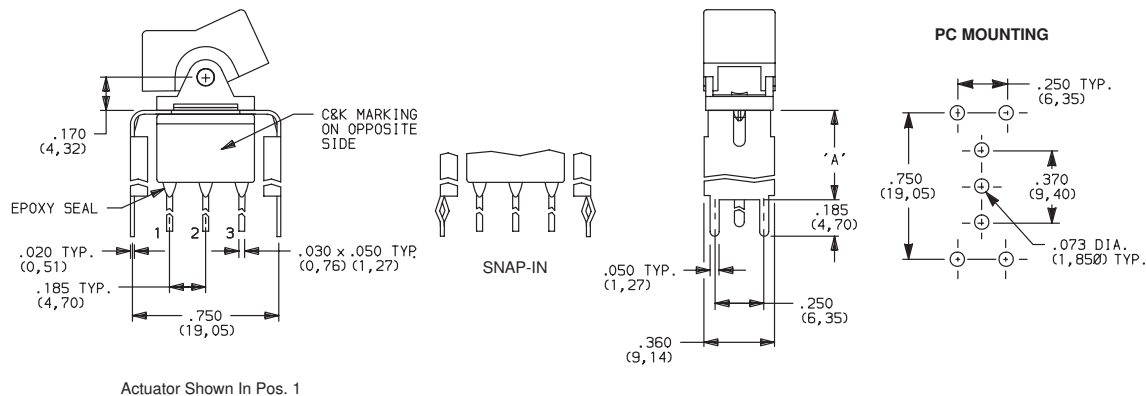
V54, V55 VERTICAL RIGHT ANGLE, EXTENDED, PC THRU-HOLE, .150" PITCH



NOTE: Terminal bend radii and lead-in manufacturing option. Available actuators, see pages F-27 and F-28.

V2, V6, V7, V8 VERTICAL MOUNT, V-BRACKET

V21, V61, V71, V81 VERTICAL MOUNT, V-BRACKET, SNAP-IN



OPTION CODE	DIM 'A'
V2, V21	.555 (14,10)
V6, V61	.460 (11,68)
V7, V71	.630 (16,00)
V8, V81	.953 (24,21)

NOTE: Available actuators, see pages F-27 and F-28.

C&K E Series Sealed Miniature Rocker and Lever Handle Switches

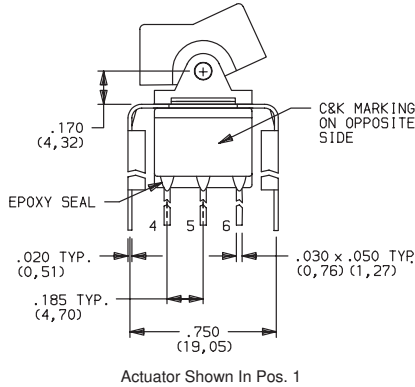
TERMINATIONS

V2, V6, V7, V8 VERTICAL MOUNT, V-BRACKET

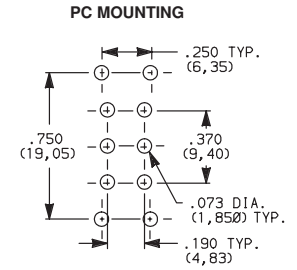
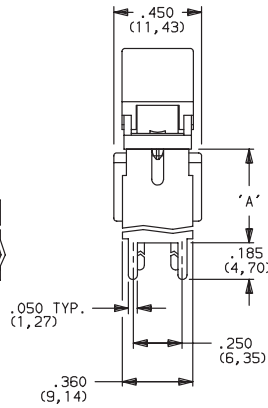
V21, V61, V71, V81 VERTICAL MOUNT, V-BRACKET, SNAP-IN



E201J1_BE2
DPDT



Actuator Shown In Pos. 1



OPTION CODE	DIM 'A'
V2, V21	.555 (14,10)
V6, V61	.460 (11,68)
V7, V71	.630 (16,00)
V8, V81	.953 (24,21)

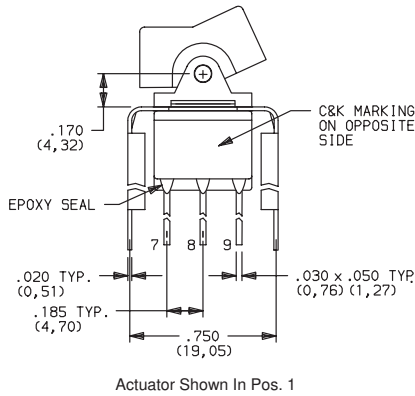
NOTE: Available actuators, see pages F-27 and F-28.

V2, V7, V8 VERTICAL MOUNT, V-BRACKET

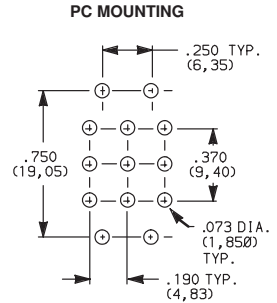
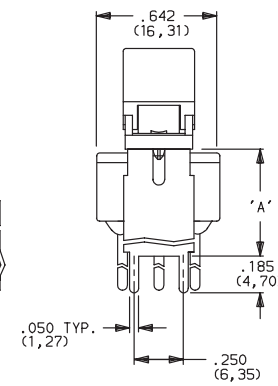
V21, V71, V81 VERTICAL MOUNT, V-BRACKET, SNAP-IN



E301J1_BE2
3PDT



Actuator Shown In Pos. 1

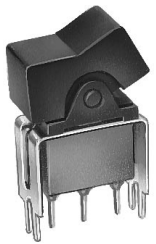


OPTION CODE	DIM 'A'
V2, V21	.555 (14,10)
V7, V71	.630 (16,00)
V8, V81	.953 (24,21)

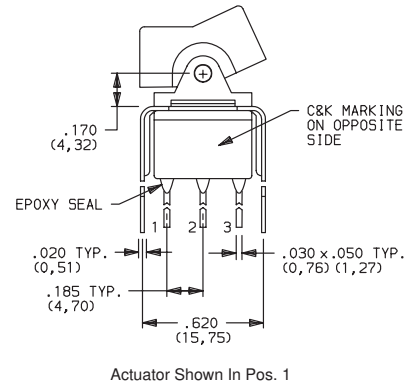
NOTE: Available actuators, see pages F-27 and F-28.

V3, V4, V9 VERTICAL MOUNT, V-BRACKET

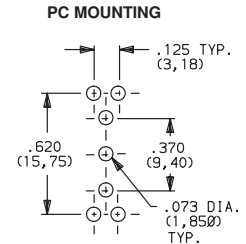
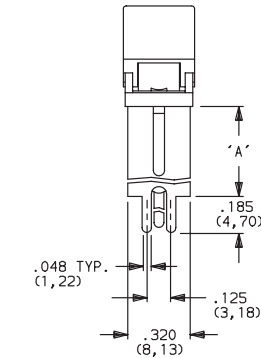
V31, V41, V91 VERTICAL MOUNT, V-BRACKET, SNAP-IN



E101J1_BE2
SPDT



Actuator Shown In Pos. 1



OPTION CODE	DIM 'A'
V3, V31	.460 (11,68)
V4, V41	.630 (16,00)
V9, V91	1.150 (29,21)

NOTE: Available actuators, see pages F-27 and F-28.



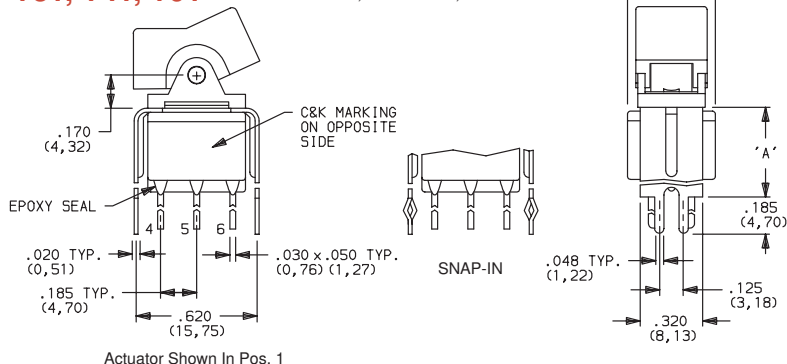
Rocker

C&K E Series Sealed Miniature Rocker and Lever Handle Switches

TERMINATIONS

V3, V4, V9 VERTICAL MOUNT, V-BRACKET

V31, V41, V91 VERTICAL MOUNT, V-BRACKET, SNAP-IN



PC MOUNTING



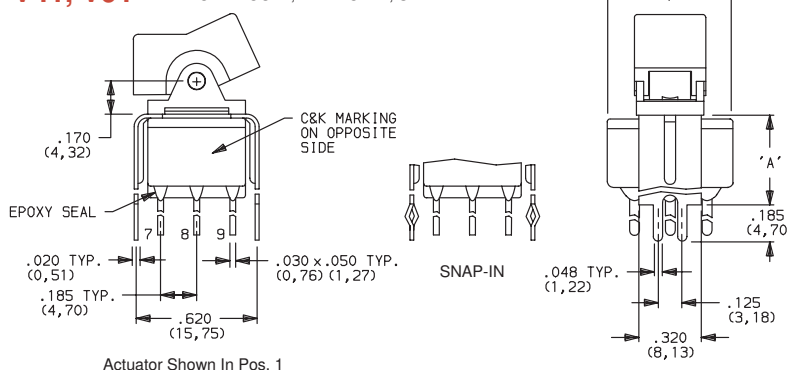
E201J1_BE2
DPDT

OPTION CODE	DIM 'A'
V3, V31	.460 (11,68)
V4, V41	.630 (16,00)
V9, V91	1.150 (29,21)

NOTE: Available actuators, see pages F-27 and F-28.

V4, V9 VERTICAL MOUNT, V-BRACKET

V41, V91 VERTICAL MOUNT, V-BRACKET, SNAP-IN



PC MOUNTING



E301J1_BE2
3PDT

OPTION CODE	DIM 'A'
V4, V41	.630 (16,00)
V9, V91	1.150 (29,21)

NOTE: Available actuators, see pages F-27 and F-28.

CONTACT MATERIAL

OPTION CODE	CONTACT MATERIAL	TERMINAL PLATING	RATINGS	
B (STD.)	GOLD ¹	GOLD ¹	LOW LEVEL/DRY CIRCUIT	0.4 VA MAX. @ 20 V AC OR DC MAX.
K		TIN-LEAD ⁶		
Q (STD.)	SILVER ^{4,5}	SILVER ⁵	POWER	E1XX & E2XX MODELS: 7.5 AMPS @ 125 V AC OR 28 V DC; 3 AMPS @ 250 V AC. E3XX MODELS: 5 AMPS @ 125 V AC OR 28 V DC; 2 AMPS @ 250 V AC.
M		TIN-LEAD ⁶		
G	GOLD OVER SILVER ^{2,3}	GOLD ³	LOW LEVEL/DRY CIRCUIT OR POWER	E1XX AND E2XX MODELS: 0.4 VA MAX @ 20 V AC OR DC MAX. OR 7.5 AMPS @ 125 V AC OR 28 V DC; 3 AMPS @ 250 V AC. E3XX MODELS: 0.4 VA MAX. @ 20 V AC OR DC MAX. OR 5 AMPS @ 125 V AC OR 28 V DC; 2 AMPS @ 250 V AC.
L		TIN-LEAD ⁶		

CONTACT MATERIAL/APPLICATION RECOMMENDATIONS—SEE CHART, PAGE L-31.

¹ CONTACTS & TERMINALS: Copper alloy, with gold plate over nickel plate.

² END CONTACTS: Coin silver, with gold plate over nickel plate.

³ CENTER CONTACTS & ALL TERMINALS: Copper alloy, with gold plate over nickel plate.

⁴ END CONTACTS: Coin silver, silver plated.

⁵ CENTER CONTACT & ALL TERMINALS: Copper alloy, silver plated.

⁶ TERMINALS: Copper alloy, with tin-lead alloy over nickel plate.

All models with all options when ordered with G, L, M or Q contact material.

B contact material standard with all terminations.

K, L & M contact materials not available with Z & Z3 terminations.

E (STD.) EPOXY SEAL

