



Chipsmall Limited consists of a professional team with an average of over 10 year of expertise in the distribution of electronic components. Based in Hongkong, we have already established firm and mutual-benefit business relationships with customers from,Europe,America and south Asia,supplying obsolete and hard-to-find components to meet their specific needs.

With the principle of "Quality Parts,Customers Priority,Honest Operation,and Considerate Service",our business mainly focus on the distribution of electronic components. Line cards we deal with include Microchip,ALPS,ROHM,Xilinx,Pulse,ON,Everlight and Freescale. Main products comprise IC,Modules,Potentiometer,IC Socket,Relay,Connector.Our parts cover such applications as commercial,industrial, and automotives areas.

We are looking forward to setting up business relationship with you and hope to provide you with the best service and solution. Let us make a better world for our industry!



Contact us

Tel: +86-755-8981 8866 Fax: +86-755-8427 6832

Email & Skype: info@chipsmall.com Web: www.chipsmall.com

Address: A1208, Overseas Decoration Building, #122 Zhenhua RD., Futian, Shenzhen, China

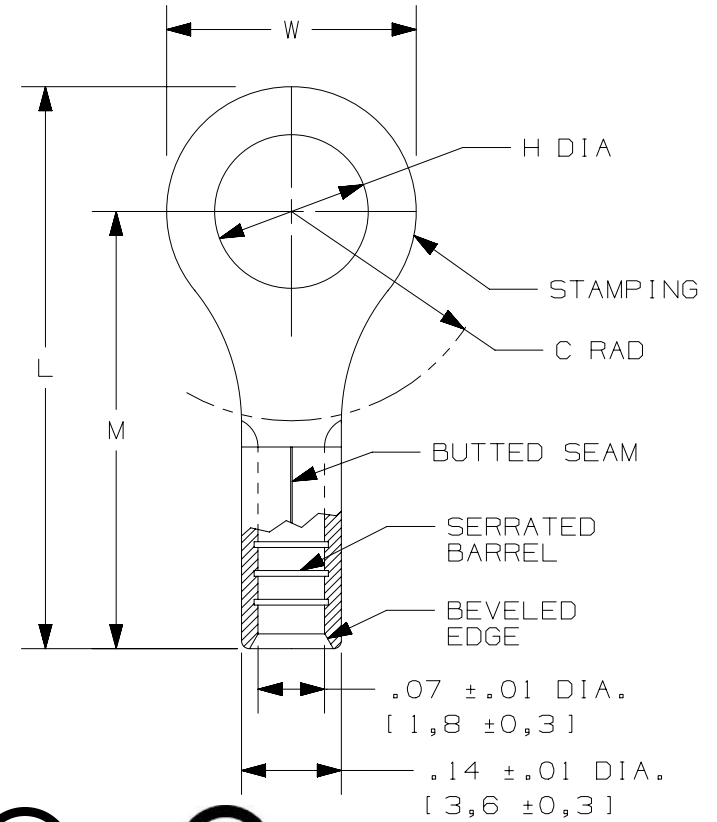


THIS COPY IS PROVIDED ON A RESTRICTED BASIS AND IS NOT TO BE USED IN ANY WAY DETRIMENTAL TO THE INTERESTS OF PANDUIT CORP.

PANDUIT PART #	STUD SIZE		DIMENSIONS in. [mm]				
	ENGLISH	METRIC	L ± .03 [0,8]	W ± .01 [0,3]	C ± .015 [0,4]	M ± .03 [0,8]	H ± .01 [0,3]
E18-4RB	#4	M2,5	.62 [15,8]	.25 [6,4]	.21 [5,3]	.50 [12,7]	.12 [3,1]
E18-6RB	#6	M3	.62 [15,8]	.25 [6,4]	.21 [5,3]	.50 [12,7]	.15 [3,8]
E18-8RB	#8	M4	.71 [18,0]	.31 [7,9]	.25 [6,4]	.55 [14,0]	.17 [4,3]
E18-10RB	#10	M5	.71 [18,0]	.31 [7,9]	.25 [6,4]	.55 [14,0]	.20 [5,1]

NOTES:

- USED FOR:
 - A. #22-18 AWG [0,5-1,0 mm²] SOLID OR STRANDED COPPER WIRE
 - B. 302°F [150°C] MAX. OPERATING TEMPERATURE
 - C. 2000V MAX VOLTAGE
- MATERIAL:
 - A. STAMPING: .03" [0,8] THK COPPER, TIN PLATED
- INSTALLATION TOOLS:
 - A. UL LISTED AND CSA CERTIFIED: CT-100A, CT-200, CT-600A (CT-570CH), CT-1570, CT-2500 (CT-2570CH)
 - B. PANDUIT APPROVED: CT-160, CT-260
- WIRE STRIP LENGTH: 9/32" ^{+1/32}₋₀ [7,1mm ^{+0,8}₋₀]
- SEE www.panduit.com FOR PACKAGE QUANTITIES INDICATED BY PART NUMBER SUFFIX
- DIMENSIONS IN BRACKETS ARE METRIC EQUIVALENT



LISTED
587H
E52164



CERTIFIED
LR31212

TITLE							
STRONGHOLD RING TERMINAL NON-INSULATED, BUTTED SEAM #22-18 AWG							
CUSTOMER DRAWING							
ITEM REVISION NAME		00123STE/00					
DATASET FILE NAME		00123STE_DC/00					
UNLESS OTHERWISE SPECIFIED, DIMENSIONAL TOLERANCES ARE: IN [mm]				PANDUIT TM			
.x ± .1 [2.54]		.xxx ± .005 [.13]					
.xx ± .01 [.25]		ANGLES ± 5°					
THIRD ANGLE PROJECTION				MATERIAL: SEE NOTES			
DRAWING NUMBER: SH41263							
DRAWN BY	DATE	CHK	SCALE	SIZE			
JHNU	2/18	TMR	N.T.S.	A			
REV		DATE	BY	CHK	APR	DESCRIPTION	ECN
00	2/18	JHNU	TMR	RGB	RELEASED	00123SH	

D10100DA/12