



Chipsmall Limited consists of a professional team with an average of over 10 year of expertise in the distribution of electronic components. Based in Hongkong, we have already established firm and mutual-benefit business relationships with customers from,Europe,America and south Asia,supplying obsolete and hard-to-find components to meet their specific needs.

With the principle of “Quality Parts,Customers Priority,Honest Operation,and Considerate Service”,our business mainly focus on the distribution of electronic components. Line cards we deal with include Microchip,ALPS,ROHM,Xilinx,Pulse,ON,Everlight and Freescale. Main products comprise IC,Modules,Potentiometer,IC Socket,Relay,Connector.Our parts cover such applications as commercial,industrial, and automotives areas.

We are looking forward to setting up business relationship with you and hope to provide you with the best service and solution. Let us make a better world for our industry!



## Contact us

Tel: +86-755-8981 8866 Fax: +86-755-8427 6832

Email & Skype: info@chipsmall.com Web: www.chipsmall.com

Address: A1208, Overseas Decoration Building, #122 Zhenhua RD., Futian, Shenzhen, China

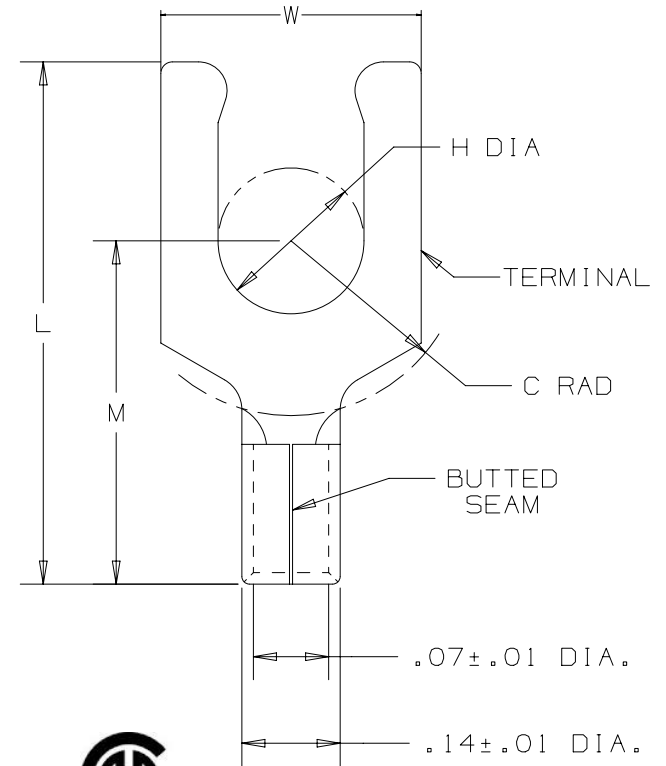


THIS COPY IS PROVIDED ON A RESTRICTED BASIS AND IS NOT TO BE USED IN ANY WAY DETRIMENTAL TO THE INTERESTS OF PANDUIT CORP.

PANDUIT PART #	STUD SIZE	DIMENSIONS - in. [mm]				
		L ± .02 [0,5]	W ± .01 [0,3]	C ± .02 [0,5]	M ± .02 [0,5]	H ± .01 [0,3]
E18-6LFB	#6	.68 [17,3]	.27 [6,9]	.22 [5,6]	.48 [12,2]	.15 [3,8]
E18-8LFB	#8	.74 [18,8]	.29 [7,4]	.23 [5,8]	.53 [13,5]	.16 [4,1]
E18-10LFB	#10	.74 [18,8]	.33 [8,4]	.23 [5,8]	.53 [13,5]	.19 [4,8]

UL & CSA TOOLS
CT-100A CT-200 CT-600-A (CT-570CH) CT-1570 CT-2500 (CT-2570CH)

PANDUIT APPROVED TOOLS
CT-160 CT-260



NOTES:

- UL LISTED & CSA CERTIFIED FOR:
  - #22-18 AWG SOLID OR STRANDED COPPER WIRE
  - 302°F [150°C] MAX TEMP RATING
  - 2000 VOLTS MAX
- MATERIAL:
  - STAMPING - .032" [0,8] THK COPPER, TIN PLATED
- WIRE STRIP LENGTH:  $9/32'' \begin{matrix} +1/32 \\ -0 \end{matrix}$  [ 7,1mm  $\begin{matrix} +0,8 \\ -0 \end{matrix}$  ]
- SEE WWW.PANDUIT.COM FOR PACKAGE QUANTITIES
- DIMENSIONS IN BRACKETS ARE IN MILLIMETERS



TITLE	
<b>STRONGHOLD LOCKING FORK TERMINAL NON-INSULATED, BUTTED SEAM #22-18 AWG</b>	
CUSTOMER DRAWING	
ITEM REVISION NAME	00123SHS/00
DATASET FILE NAME	00123SHS/00
UNLESS OTHERWISE SPECIFIED, DIMENSIONAL TOLERANCES ARE: IN [ mm ]	MATERIAL:  SEE NOTES
.X ± .XX ±	.XXX ± ANGLES ±
	THIRD ANGLE PROJECTION
DRAWN BY JHNU	DATE 2/18
CHK TMR	SCALE NTS
DRAWING NUMBER: SH41059	SHT 1 OF 1
REV	DATE
BY	CHK
APR	DESCRIPTION
00	2/18
JHNU	TMR
RGB	RELEASED
00123SH	ECN

D10100DA/16