



Chipsmall Limited consists of a professional team with an average of over 10 year of expertise in the distribution of electronic components. Based in Hongkong, we have already established firm and mutual-benefit business relationships with customers from,Europe,America and south Asia,supplying obsolete and hard-to-find components to meet their specific needs.

With the principle of “Quality Parts,Customers Priority,Honest Operation,and Considerate Service”,our business mainly focus on the distribution of electronic components. Line cards we deal with include Microchip,ALPS,ROHM,Xilinx,Pulse,ON,Everlight and Freescale. Main products comprise IC,Modules,Potentiometer,IC Socket,Relay,Connector.Our parts cover such applications as commercial,industrial, and automotives areas.

We are looking forward to setting up business relationship with you and hope to provide you with the best service and solution. Let us make a better world for our industry!



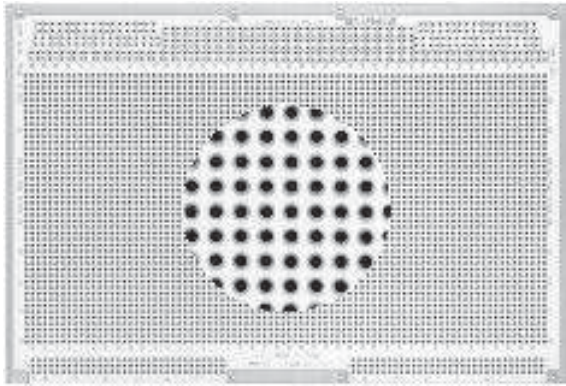
Contact us

Tel: +86-755-8981 8866 Fax: +86-755-8427 6832

Email & Skype: info@chipsmall.com Web: www.chipsmall.com

Address: A1208, Overseas Decoration Building, #122 Zhenhua RD., Futian, Shenzhen, China





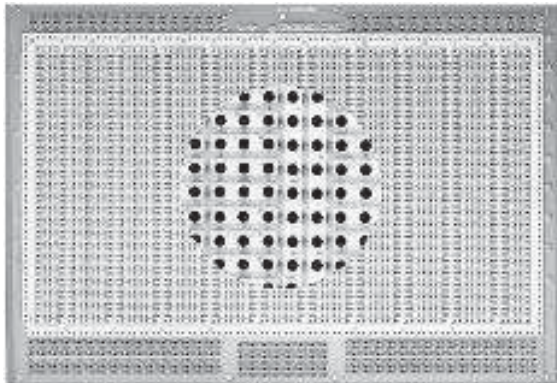
E160-6U-3 6U X 160MM

Circuit Pattern:
Width/Thick:
Height:
16-Pin DIP Capacity:
Material:
Wire-Wrap Terminals:
Wire-Wrap Socket Pins:
Rec. Card Cage:
96-Pin Din Connector:

Hole Diameter:

Voltage/Ground Plane 6.30"/.062"
 9.19"
 105
 FR4 Epoxy Glass
 T44, T46, T49, T68
 R50, R51, R52, R53
 CCK160-6U
 RE96MWR
 (Available Separately)
 .055"

- Overall voltage and ground planes on opposite board sides provide excellent shielding and power distribution
- To simulate plated-thru holes committed to voltage or ground planes, use Vector T123 eye lets, available separately) for use without pins)
- Layout paper and instructions included
- Row and column legends provided



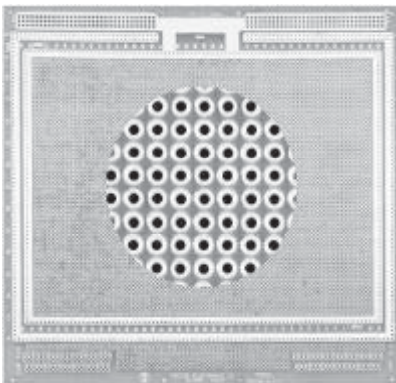
4615 6U X 160MM

Circuit Pattern:
Width/Thick:
Height:
16-Pin DIP Capacity:
Material:
Wire-Wrap Terminals:
Wire-Wrap Socket Pins:
Rec. Card Cage:
96-Pin Din Connector:

Hole Diameter:

3-Hole Solder Pad 6.30"/.062"
 9.19"
 50
 FR4 Epoxy Glass
 T44, T46, T49, T68
 R32
 CCK160-6U
 RE96MWR
 (Available Separately)
 .042"

- 3-hole solder pads (0.28" x 0.080") for interconnecting multiple component leads
- Bus and pad surfaces solder-coated for user convenience
- Interleaved buses on both sides, back-to-back
- Layout paper and instructions included
- Row and column legends provided



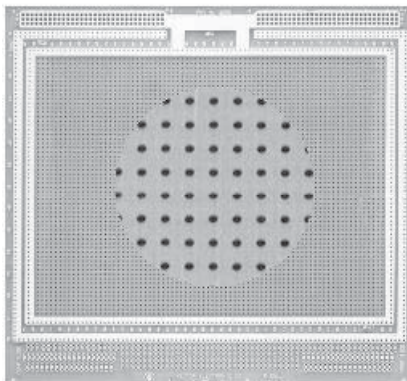
E220-6U-1 6U X 220MM

Circuit Pattern:
Width/Thick:
Height:
16-Pin DIP Capacity:
Material:
Wire-Wrap Terminals:
Wire-Wrap Socket Pins:
Rec. Card Cage:
96-Pin Din Connector:

Hole Diameter:

Pad-per-hole 8.66"/0.62"
 9.19"
 140
 FR4 Epoxy Glass
 T44, T46, T49, T68
 R32
 CCK220-6U
 RE96MWR
 (Available Separately)
 .042"

- Plated-thru holes
- Voltage and ground buses around board perimeter both sides
- Pad and Bus surfaces solder-coated for user convenience
- Also accepts PGA 's and PLCC's
- Layout paper and instructions included
- Row and column legends provided



E220-6U-2 6U X 220MM

Circuit Pattern:
Width/Thick:
Height:
16-Pin DIP Capacity:
Material:
Wire-Wrap Terminals:
Wire-Wrap Socket Pins:
Rec. Card Cage:
96-Pin Din Connector:

Hole Diameter:

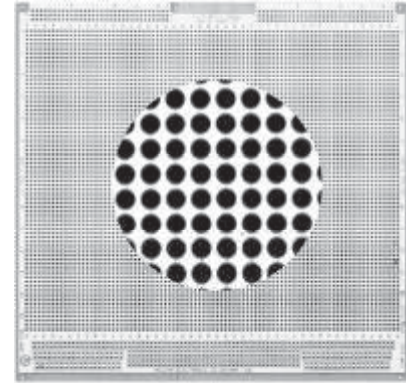
Peripheral Buses 8.66"/.062"
 9.19"
 140
 FR4 Epoxy Glass
 T44, T46, T49, T68
 R32
 CCK220-6U
 RE96MWR
 (Available Separately)
 .042"

- Voltage and ground buses around board perimeter both sides
- Bus surfaces solder-coated for user convenience
- Also accepts PGA 's and PLCC's
- 58 x 78 grid unrestricted component placement area
- Layout paper and instructions included
- Row and column legends provided

E220-6U-3**6U X 220MM**

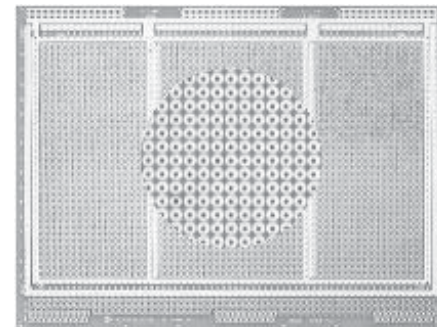
Circuit Pattern: Voltage/Ground plane
Width/Thick: 8.66"/.062"
Height: 9.19"
16-Pin DIP Capacity: 168
Material: FR4 Epoxy Glass
Wire-Wrap Terminals: T44, T46, T49, T68
Wire-Wrap Socket Pins: R50, R51, R52, R53
Rec. Card Cage: CCK220-6U
96-Pin Din Connector: RE96MWR
 (Available Separately)
Hole Diameter: .055"

- Overall voltage and ground planes on opposite board sides provide excellent shielding and power distribution
- Plane surfaces solder-coated for user convenience
- To simulate plated-thru holes committed to voltage or ground planes, use Vector T123 eyelets, available separately (for use without pins)
- Layout paper and instructions included

**9U****E280-9U-1****9U X 280MM**

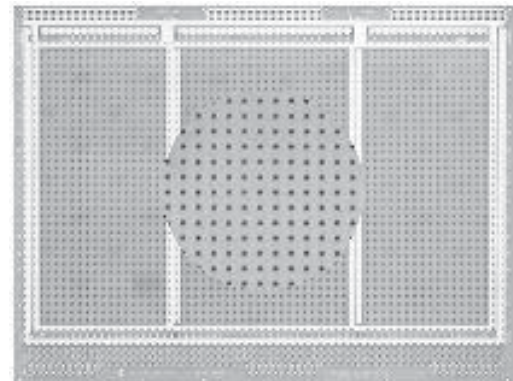
Hole Diameter: .042"
Circuit Pattern: Pad-Per-Hole
Width/Thick: 11.02"/.062"
Height: 14.44"
16-Pin DIP Capacity: 270
Material: FR4 Epoxy Glass
Wire-Wrap Terminals: T44, T46, T49, T68
Wire-Wrap Socket Pins: R32
Rec. Card Cage: CCK280-9U
96-Pin Din Connector: RE96MWR
 (Available Separately)

- Voltage and ground buses around board perimeter both sides
- Accepts PGA and PLCC devices
- Additional power and ground buses in signal area
- Layout paper and instructions included
- Row and column legends provided
- Plated-thru holes

**E280-9U-2****9U X 280MM**

Circuit Pattern: Peripheral Buses
Width/Thick: 11.02"/.062"
Height: 14.44"
16-Pin DIP Capacity: 270
Material: FR4 Epoxy Glass
Wire-Wrap Terminals: T44, T46, T49, T68
Wire-Wrap Socket Pins: R32
Rec. Card Cage: CCK280-9U
96-Pin Din Connector: RE96MWR
Hole Diameter: .042"

- Voltage and ground buses around board perimeter both sides
- Bus surfaces solder-coated for user convenience
- Capacity for mounting 270, 16-pin DIP IC devices; also accepts PGA and PLCC devices
- Additional power and ground buses in signal area
- Three 79 x 36 grid unrestricted component placement areas
- Layout paper and instructions included
- Row and column legends provided

**E280-9U-3****9U X 280MM**

Circuit Pattern: Voltage/Ground Plane
Width/Thick: 11.02"/.062"
Height: 14.44"
16-Pin DIP Capacity: 348
Material: FR4 Epoxy Glass
Wire-Wrap Terminals: T44, T46, T49, T68
Wire-Wrap Socket Pins: R50, R51, R52, R53
Rec. Card Cage: CCK280-9U
96-Pin Din Connector: RE96MWR
Hole Diameter: .055"

- Overall voltage and ground planes on opposite board sides provide excellent shielding and power distribution
- Additional power and ground buses in signal area
- To simulate plated-thru holes committed to voltage or ground planes, use Vector T123 eyelets, available separately (for use without pins)
- Layout paper and instructions included
- Row and column legends provided

