



Chipsmall Limited consists of a professional team with an average of over 10 year of expertise in the distribution of electronic components. Based in Hongkong, we have already established firm and mutual-benefit business relationships with customers from,Europe,America and south Asia,supplying obsolete and hard-to-find components to meet their specific needs.

With the principle of “Quality Parts,Customers Priority,Honest Operation,and Considerate Service”,our business mainly focus on the distribution of electronic components. Line cards we deal with include Microchip,ALPS,ROHM,Xilinx,Pulse,ON,Everlight and Freescale. Main products comprise IC,Modules,Potentiometer,IC Socket,Relay,Connector.Our parts cover such applications as commercial,industrial, and automotives areas.

We are looking forward to setting up business relationship with you and hope to provide you with the best service and solution. Let us make a better world for our industry!



Contact us

Tel: +86-755-8981 8866 Fax: +86-755-8427 6832

Email & Skype: info@chipsmall.com Web: www.chipsmall.com

Address: A1208, Overseas Decoration Building, #122 Zhenhua RD., Futian, Shenzhen, China



EXTRA-DEEP 30.5-MM PUSHBUTTON ENCLOSURES, TYPE 4X



IEC 60529, IP66

APPLICATION

Designed to house 30.5-mm oil-tight pushbuttons, switches and pilot lights. Enclosures provide protection against dirt, dust, oil and water. Extra-deep design accommodates additional contact blocks for pushbuttons.

See Mild Steel chapter for related mild steel enclosures.

SPECIFICATIONS

- 14 gauge bodies, 16 gauge covers; Type 304 or Type 316 stainless steel
- Seams continuously welded and ground smooth
- Captivated cover screws thread into sealed wells
- Bonding provision on door; grounding nut on body
- 4-way pushbutton holes accept all brands of oil-tight pushbuttons, switches and pilot lights
- Enclosures 6.00 x 4.00 x 4.75 in. (152 x 102 x 121 mm) and larger have internal detachable hinge to hold cover open during wiring, yet permit immediate removal
- Oil-resistant gasket

FINISH

Cover and sides of body have smooth #4 brushed finish.

ACCESSORIES

Industrial Corrosion Inhibitors
HOL-SEALERS Hole Seals
Tamper-Resistant Screws

BULLETIN: PB1S

INDUSTRY STANDARDS

UL 508A Listed; Type 4, 4X, 12; File Number E61997
cUL Listed per CSA C22.2 No 94; Type 4, 4X, 12; File Number E61997

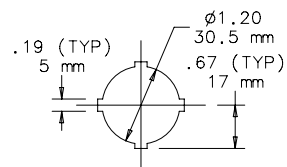
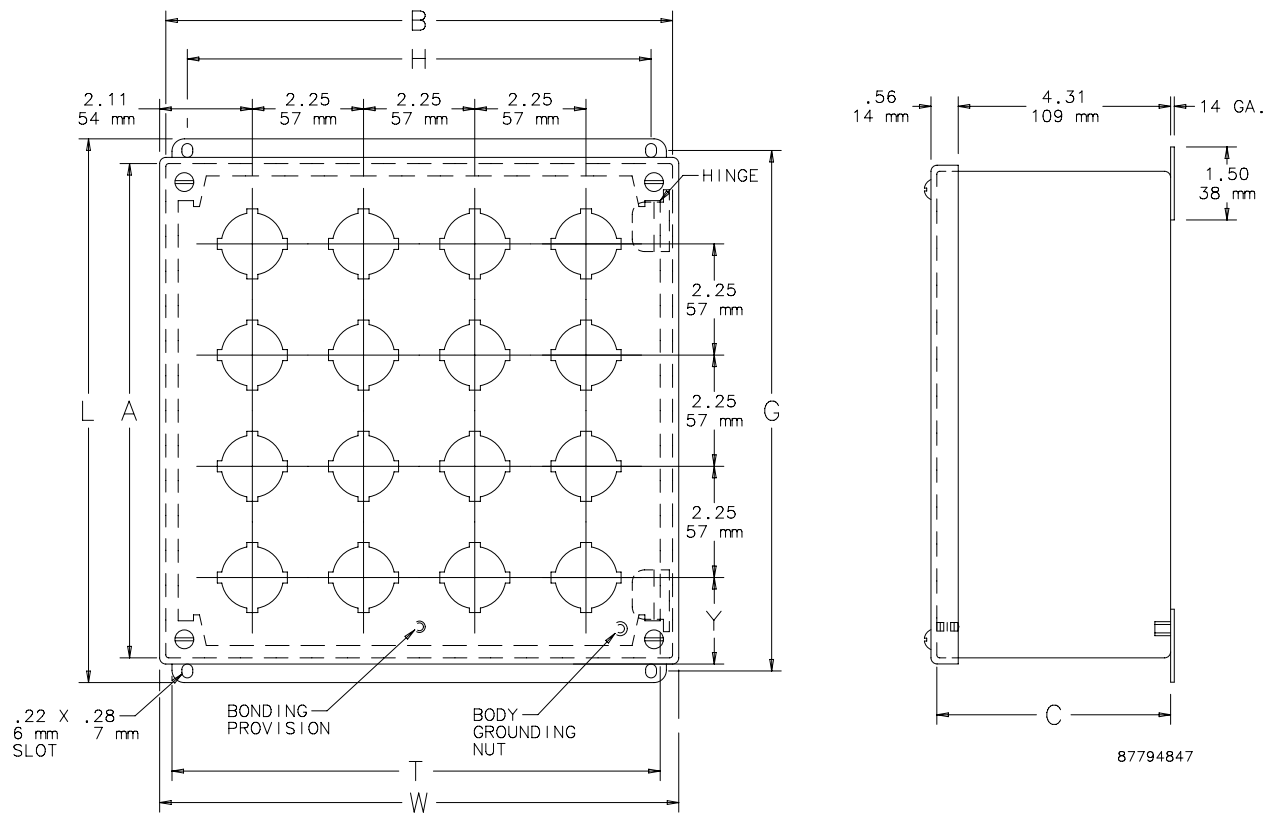
NEMA/EEMAC Type 4X, 12, 13

CSA File Number 42186: Type 4, 4X, 12

Standard Product

Catalog Number	AxBxC in./mm	Stainless Steel Type	Gauge	Number of Holes	Mounting G x H in./mm	Overall L x W in./mm	T in./mm	Y in./mm
E1PBXSS	4.00 x 4.00 x 4.75 102 x 102 x 121	304	16	1	4.50 x 3.12 114 x 79	5.00 x 4.22 127 x 107	3.75 95	2.11 54
E2PBXSS	6.00 x 4.00 x 4.75 152 x 102 x 121	304	14	2	6.50 x 3.12 165 x 79	7.00 x 4.22 178 x 107	3.75 95	1.98 50
E3PBXSS	8.00 x 4.00 x 4.75 203 x 102 x 121	304	14	3	8.50 x 3.12 216 x 79	9.00 x 4.22 229 x 107	3.75 95	1.86 47
E4PBXSS	10.00 x 4.00 x 4.75 254 x 102 x 121	304	14	4	10.50 x 3.12 267 x 79	11.00 x 4.22 279 x 107	3.75 95	1.73 44
E16PBXSS	11.75 x 10.75 x 4.75 298 x 273 x 121	304	14	16	12.25 x 9.88 311 x 251	12.75 x 10.97 324 x 279	10.50 267	2.61 66
E16PBXSS6	11.75 x 10.75 x 4.75 298 x 273 x 121	316	14	16	12.25 x 9.88 311 x 251	12.75 x 10.97 324 x 279	10.50 267	2.61 66

Catalog number ending in 6 is Type 316L stainless steel.



30.5mm 4-WAY

NOTE: Cover bonding provision location varies based on pushbutton pattern.

Hole Arrangement

