



Chipsmall Limited consists of a professional team with an average of over 10 year of expertise in the distribution of electronic components. Based in Hongkong, we have already established firm and mutual-benefit business relationships with customers from,Europe,America and south Asia,supplying obsolete and hard-to-find components to meet their specific needs.

With the principle of “Quality Parts,Customers Priority,Honest Operation,and Considerate Service”,our business mainly focus on the distribution of electronic components. Line cards we deal with include Microchip,ALPS,ROHM,Xilinx,Pulse,ON,Everlight and Freescale. Main products comprise IC,Modules,Potentiometer,IC Socket,Relay,Connector.Our parts cover such applications as commercial,industrial, and automotives areas.

We are looking forward to setting up business relationship with you and hope to provide you with the best service and solution. Let us make a better world for our industry!



Contact us

Tel: +86-755-8981 8866 Fax: +86-755-8427 6832

Email & Skype: info@chipsmall.com Web: www.chipsmall.com

Address: A1208, Overseas Decoration Building, #122 Zhenhua RD., Futian, Shenzhen, China



REVISION RECORD		
REV	DESCRIPTION	DRFT

NOTES :

MATERIAL

- 1.PLASTIC: NYLON UL 94V-0 COLOR:BLACK
- 2.COVER: STAINLESS STEEL
PLATING: UNDERPLATING ALL OVER CU 20u"Min, PLATING NICKEL 50-120u"
- 3.TERMINAL: PHOSPHOR BRONZE T=0.2±0.01mm;
PLATING GOLD 3u"ALL OVER
UNDERPLATING ALL OVER NICKEL 50u" Min.

ELECTRICAL CHARACTERISTICS

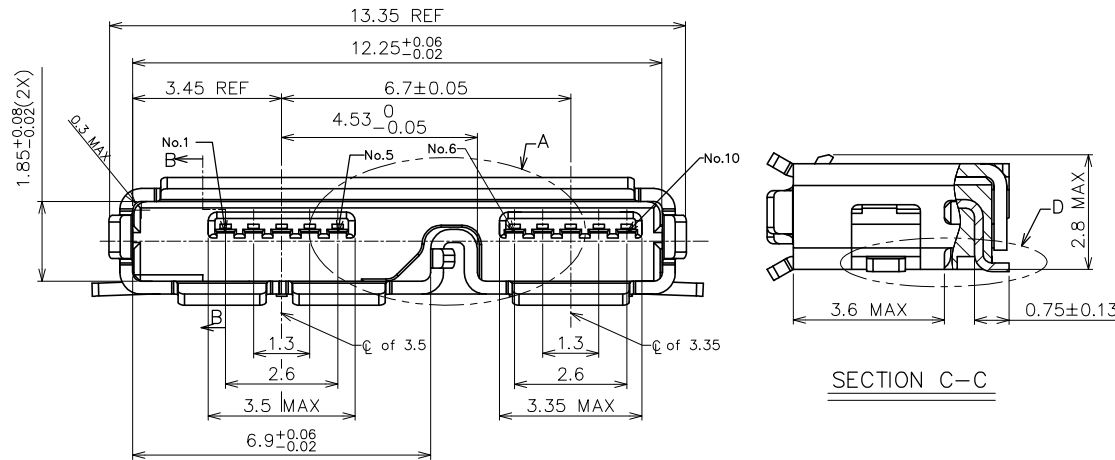
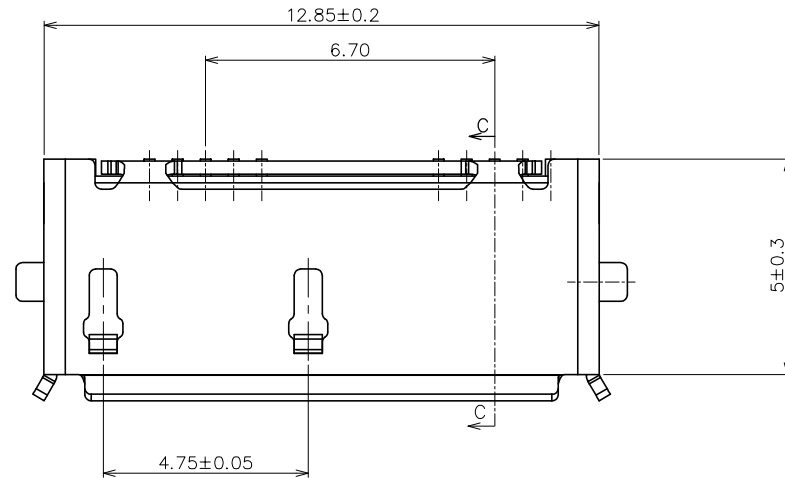
- 1.CURRENT RATING: 1.8A
- 2.CONTACT RESISTANCE: 30mΩMAX.
- 3.DIELECTRICAL WITHSTANDING: 100V AC/1min.
- 4.INSULATION RESISTANCE: 100MΩMin.

MECHANICAL CHARACTERISTICS

- 1.MATING FORCE: 3.57Kgf MAX(35N MAX).
- 2.UNMATING FORCE: 0.8Kgf Min(8N Min).
- 3.DURABILITY: 10000 CYCLES .

OTHERS:

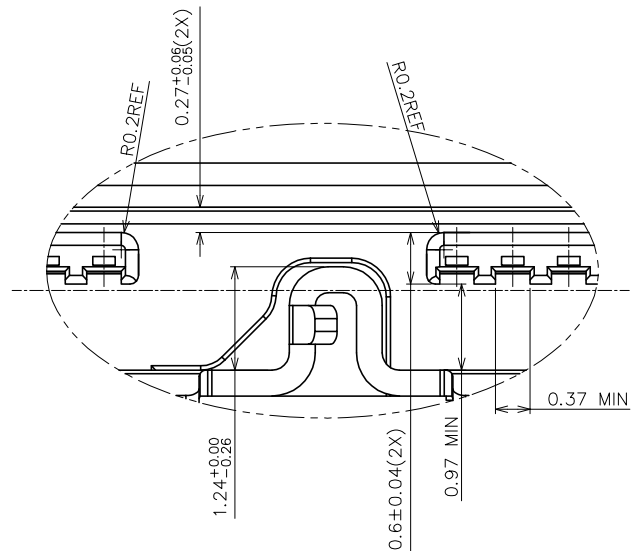
- 1.OPERATION TEMPERATURE: -20°cto+80°c



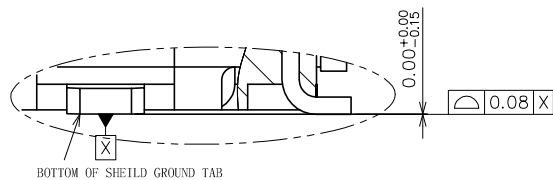
SECTION C-C

DETAILED VIEWS	<table border="1"> <tr> <td>MM (INCH)</td> <td>DFTO Roy</td> <td>DATE 11/20/2012</td> </tr> <tr> <td>TOLERANCES EXCEPT AS NOTED</td> <td>CHKD</td> <td>DATE</td> </tr> <tr> <td>MM .00 ± 0.38 .01 ± 0.30 .02 ± 0.13 .03 ± 0.05</td> <td>APPVL</td> <td>DATE</td> </tr> <tr> <td>±</td> <td colspan="2">MATERIAL :</td> </tr> <tr> <td>±</td> <td colspan="2">QTY :</td> </tr> <tr> <td>±</td> <td colspan="2">FINISH :</td> </tr> <tr> <td>±</td> <td colspan="2">SCALE : 1:1</td> </tr> </table>	MM (INCH)	DFTO Roy	DATE 11/20/2012	TOLERANCES EXCEPT AS NOTED	CHKD	DATE	MM .00 ± 0.38 .01 ± 0.30 .02 ± 0.13 .03 ± 0.05	APPVL	DATE	±	MATERIAL :		±	QTY :		±	FINISH :		±	SCALE : 1:1				RoHS Compliant	
	MM (INCH)	DFTO Roy	DATE 11/20/2012																							
	TOLERANCES EXCEPT AS NOTED	CHKD	DATE																							
	MM .00 ± 0.38 .01 ± 0.30 .02 ± 0.13 .03 ± 0.05	APPVL	DATE																							
	±	MATERIAL :																								
±	QTY :																									
±	FINISH :																									
±	SCALE : 1:1																									
ANGLES ± 2°				TITLE USB 3.0 MICRO-AB RECEPTACLE																						
THIRD ANGLE PROJECTION				DRAWING NO. E8110-001-01 /PART NO. E8110-001-01																						
DO NOT SCALE DRAWING				SHEET 1 OF 2	SIZE A3 REV 01																					

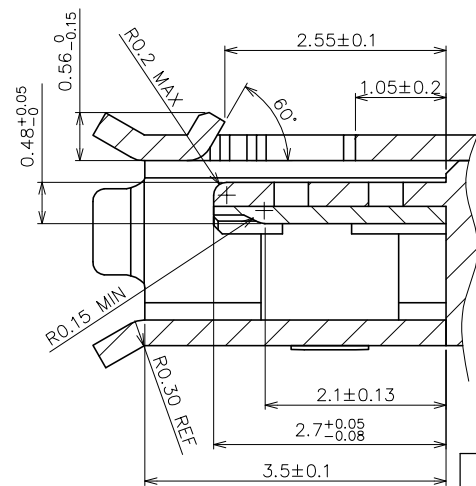
REVISION RECORD		
REV	DESCRIPTION	DRFT



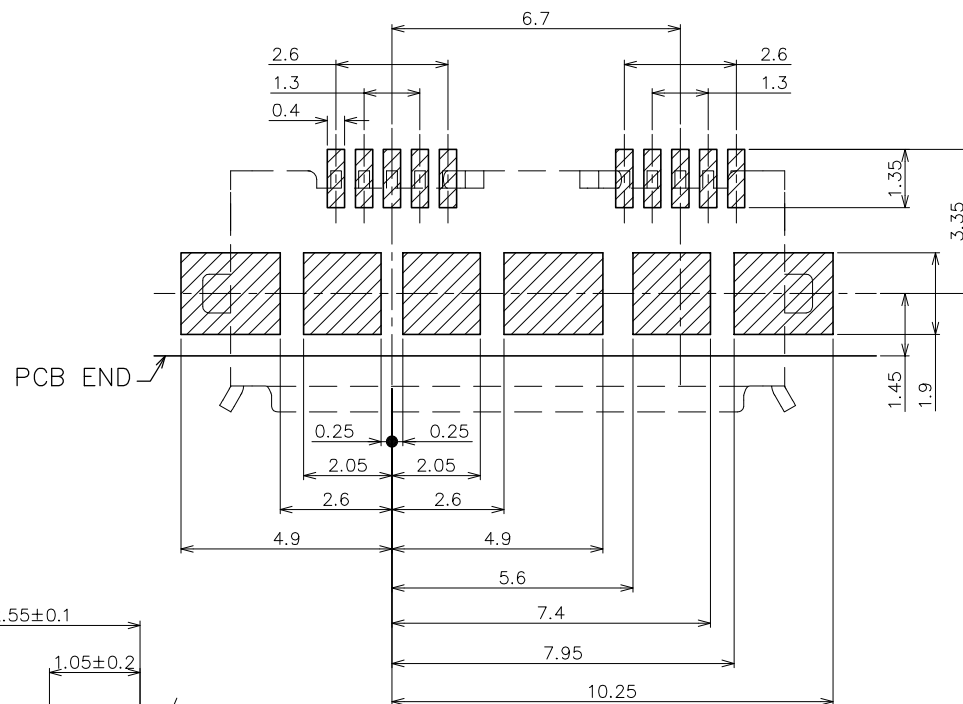
DETAIL A
SCALE 2:1



DETAIL D
SCALE 2:1



SECTION B-B
SCALE 2:1



RECOMMENDED PCB LAYOUT
TOP VIEW (TOLERANCE: ±0.05)

DETACHED LISTS	MM (INCH) TOLERANCES EXCEPT AS NOTED MM ± 0.38 .0 ± 0.30 ± .00 ± 0.13 ± .000 ± 0.05 ±		DFTO Roy	DATE 11/20/2012		RoHS Compliant		
			CHKD	DATE				
	ANGLES ± 2° 		APPVL	DATE	TITLE			
	THIRD ANGLE PROJECTION		MATERIAL:		USB 3.0 MICRO-AB RECEPTACLE			
		QTY:		DRAWING NO. E8110-001-01		SIZE A3	REV 01	
		FINISH:		/PART NO. E8110-001-01				
		SCALE: 1:1		DO NOT SCALE DRAWING		SHEET 2 OF 2		

8

7

6

5

4

3

2

1

H
G
F
E
D
C
B
A