



Chipsmall Limited consists of a professional team with an average of over 10 year of expertise in the distribution of electronic components. Based in Hongkong, we have already established firm and mutual-benefit business relationships with customers from,Europe,America and south Asia,supplying obsolete and hard-to-find components to meet their specific needs.

With the principle of "Quality Parts,Customers Priority,Honest Operation,and Considerate Service",our business mainly focus on the distribution of electronic components. Line cards we deal with include Microchip,ALPS,ROHM,Xilinx,Pulse,ON,Everlight and Freescale. Main products comprise IC,Modules,Potentiometer,IC Socket,Relay,Connector.Our parts cover such applications as commercial,industrial, and automotives areas.

We are looking forward to setting up business relationship with you and hope to provide you with the best service and solution. Let us make a better world for our industry!



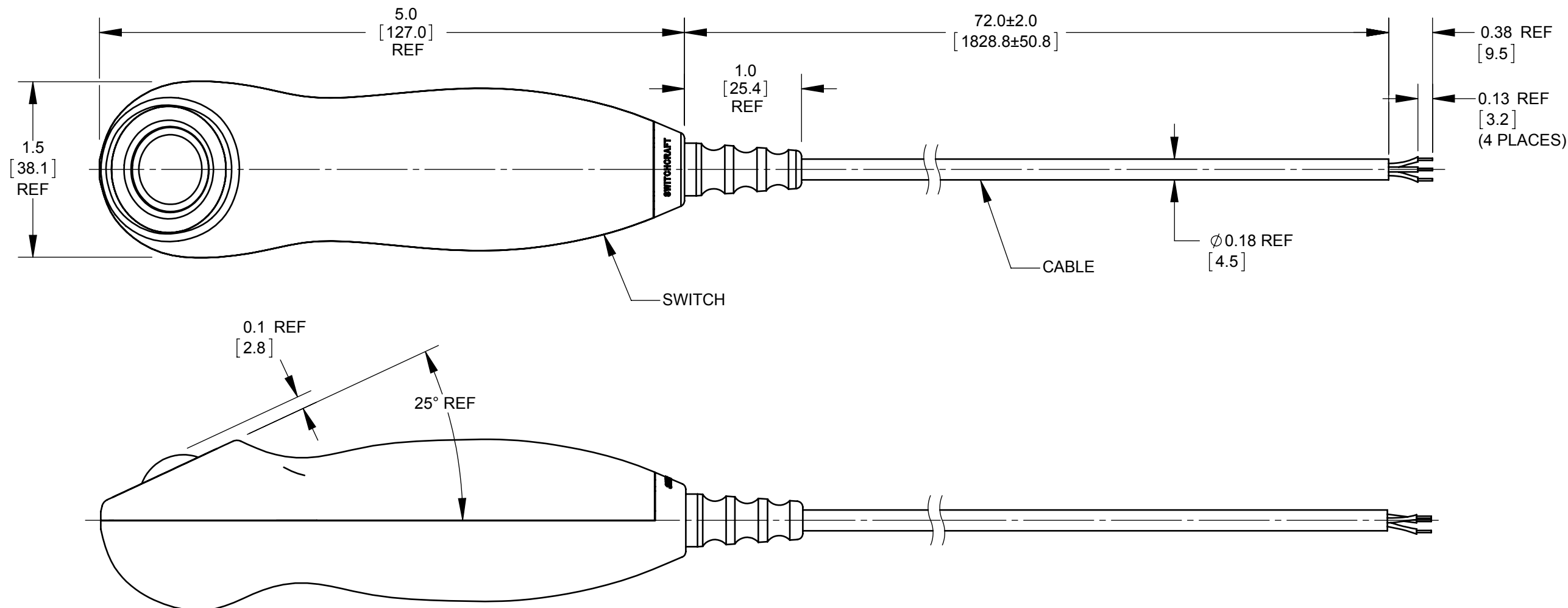
Contact us

Tel: +86-755-8981 8866 Fax: +86-755-8427 6832

Email & Skype: info@chipsmall.com Web: www.chipsmall.com

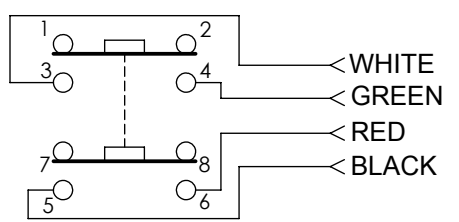
Address: A1208, Overseas Decoration Building, #122 Zhenhua RD., Futian, Shenzhen, China



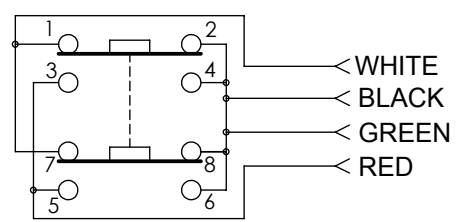


NOTES:

- SPECIFICATIONS:
 SWITCH:
 DOUBLE POLE, MOMENTARY
 POSITIVE TACTILE FEEDBACK
 NOMINAL KEY TRAVEL 0.10 INCHES
 GOLD CONTACT FINISH
 MAXIMUM SWITCHING CURRENT 250mA
 MAXIMUM VOLTAGE 120V
 MAXIMUM POWER 9 WATTS AC, 5 WATTS DC
 MAXIMUM CARRYING CURRENT 500mA
 MAXIMUM CONTACT RESISTANCE 80mohm
 DIELECTRIC WITHSTANDING VOLTAGE 1,000V
 OPERATING LIFE 100,000 CYCLES
 OPERATING TEMPERATURE -25 TO +75 °C
 ACTUATING FORCE LESS THAN 2 lb
- MATERIALS:
 SWITCH HOUSING: GRAY THERMOPLASTIC
 ACTUATING BUTTON: YELLOW ELASTOMER
 CONTACTS: COPPER ALLOY, GOLD PLATED
 STRAIN RELIEF: YELLOW ELASTOMER
 CABLE: 4 CONDUCTOR, 26 AWG STRANDED, GRAY PVC JACKET



E921KA
WIRING DIAGRAM
"A" CIRCUIT



E921KC
WIRING DIAGRAM
"C" CIRCUIT

CUSTOMER DRAWING

					THIS DRAWING DESCRIBES A DESIGN CONSIDERED PROPRIETARY IN NATURE, DEVELOPED AND MANUFACTURED BY SWITCHCRAFT INC. AND IS RELEASED ON A CONFIDENTIAL BASIS FOR IDENTIFICATION PURPOSES ONLY.						
					UNLESS OTHERWISE SPECIFIED	SIZE	WIDTH	MULT	LBS/M	TEMPER	
					1. ALL DIMENSIONS IN INCHES	FINISH				MATERIAL	
					- TWO PLACE DECIMALS ±0.02	SPEC No.				SEE NOTE 2	
					- THREE PLACE DECIMALS ±0.005	FIRST USED ON		SCALE			
						1:1					
A	ECO #27491	5-28-15	PC	TJK	DATE DRAWN	BY	CHKD	APVD	SHEET 1 OF 1		
REV	ECO NUMBER	DATE	BY	APVD	2-19-15	SRC	SRC	TJK	PART No.		
REVISIONS					DO NOT SCALE DRAWING					E921KA-E921KC	
					PENDANT CABLE					REV A	