



Chipsmall Limited consists of a professional team with an average of over 10 year of expertise in the distribution of electronic components. Based in Hongkong, we have already established firm and mutual-benefit business relationships with customers from,Europe,America and south Asia,supplying obsolete and hard-to-find components to meet their specific needs.

With the principle of “Quality Parts,Customers Priority,Honest Operation,and Considerate Service”,our business mainly focus on the distribution of electronic components. Line cards we deal with include Microchip,ALPS,ROHM,Xilinx,Pulse,ON,Everlight and Freescale. Main products comprise IC,Modules,Potentiometer,IC Socket,Relay,Connector.Our parts cover such applications as commercial,industrial, and automotives areas.

We are looking forward to setting up business relationship with you and hope to provide you with the best service and solution. Let us make a better world for our industry!



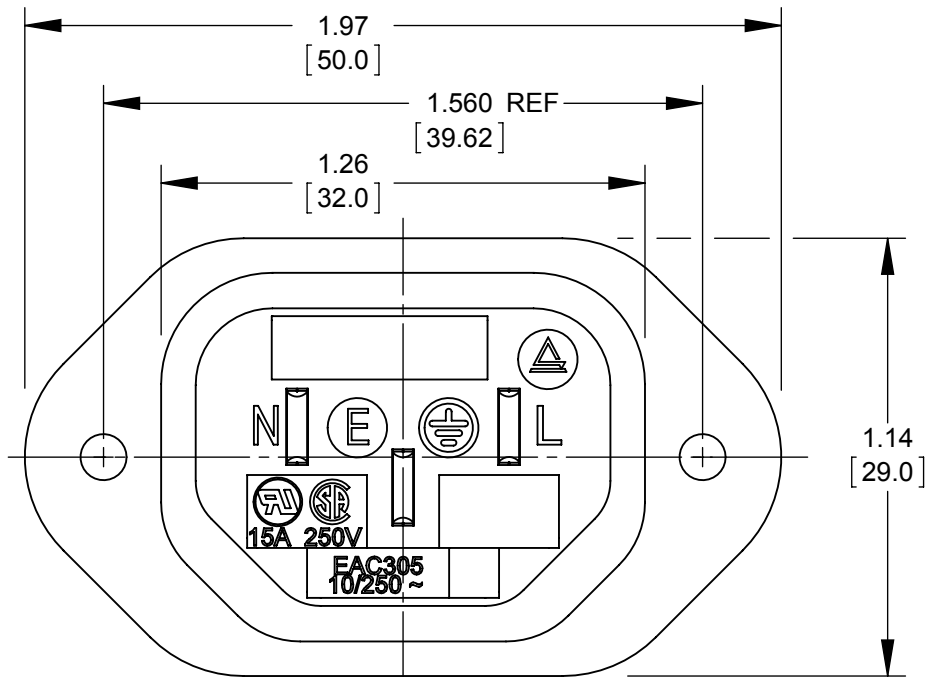
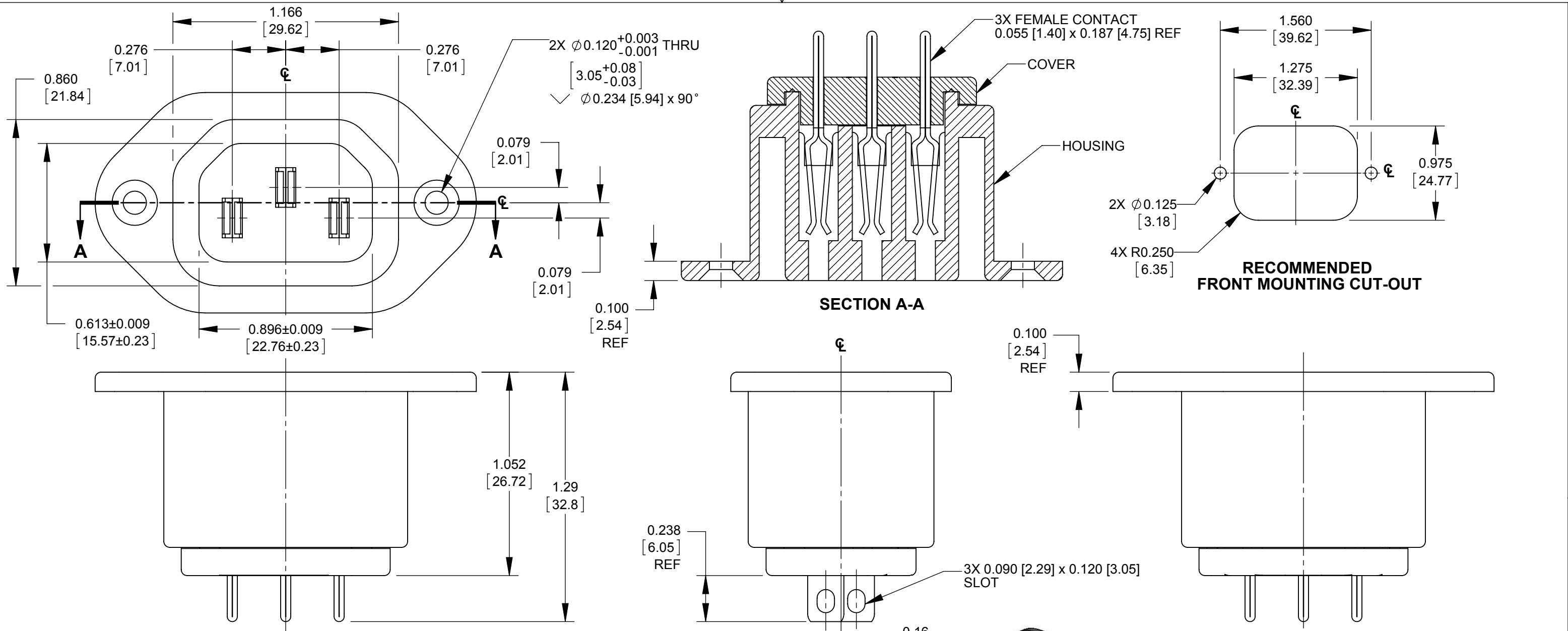
## Contact us

Tel: +86-755-8981 8866 Fax: +86-755-8427 6832

Email & Skype: info@chipsmall.com Web: www.chipsmall.com

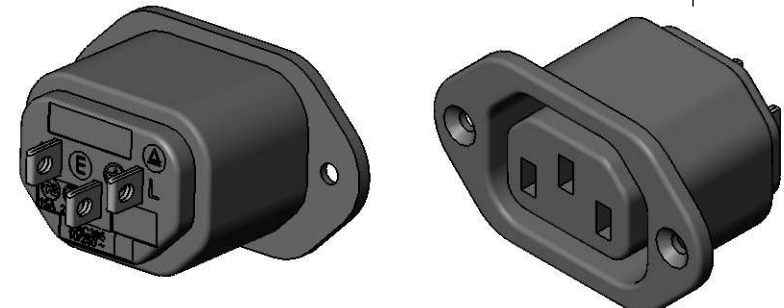
Address: A1208, Overseas Decoration Building, #122 Zhenhua RD., Futian, Shenzhen, China





**NOTES:**

- 1. MEETS IEC 60320 SPECIFICATION.
- 2. AGENCY APPROVAL & RATING:  
UL & CSA: 15A, 250V AC.
- 3. MATERIALS:  
HOUSING AND COVER, BLACK THERMOPLASTIC.  
TERMINALS, TIN PLATED COPPER ALLOY.



**CUSTOMER DRAWING**

UNLESS OTHERWISE SPECIFIED 1. ALL DIMENSIONS IN INCHES [mm] - TWO PLACE DECIMALS ±0.02 [0.5] - THREE PLACE DECIMALS ±0.005 [0.13]					THIS DRAWING DESCRIBES A DESIGN CONSIDERED PROPRIETARY IN NATURE, DEVELOPED AND MANUFACTURED BY SWITCHCRAFT INC. AND IS RELEASED ON A CONFIDENTIAL BASIS FOR IDENTIFICATION PURPOSES ONLY.				
					SIZE	WIDTH	MULT	LBS/M	TEMPER
REVISIONS H 27335 07/30/14 PC TJK G 26912 02/16/12 BL TJK F 24129 03/27/02 BL TJK					FINISH SPEC No.			MATERIAL SPEC No.	
					FIRST USED ON			SCALE 2:1	
DATE DRAWN 07/14/77		BY CJ	CHKD AM 01/04/85	APVD RV 01/04/85					
NAME RECEPTACLE FEMALE					SHEET 1 OF 1				
DO NOT SCALE DRAWING					PART No. <b>EAC305</b>		REV <b>H</b>		