



Chipsmall Limited consists of a professional team with an average of over 10 year of expertise in the distribution of electronic components. Based in Hongkong, we have already established firm and mutual-benefit business relationships with customers from,Europe,America and south Asia,supplying obsolete and hard-to-find components to meet their specific needs.

With the principle of “Quality Parts,Customers Priority,Honest Operation,and Considerate Service”,our business mainly focus on the distribution of electronic components. Line cards we deal with include Microchip,ALPS,ROHM,Xilinx,Pulse,ON,Everlight and Freescale. Main products comprise IC,Modules,Potentiometer,IC Socket,Relay,Connector.Our parts cover such applications as commercial,industrial, and automotives areas.

We are looking forward to setting up business relationship with you and hope to provide you with the best service and solution. Let us make a better world for our industry!



Contact us

Tel: +86-755-8981 8866 Fax: +86-755-8427 6832

Email & Skype: info@chipsmall.com Web: www.chipsmall.com

Address: A1208, Overseas Decoration Building, #122 Zhenhua RD., Futian, Shenzhen, China



1.5mm Side Looking Phototransistor EAPLP04RRKA0

Features

- Fast response time
- High sensitivity
- Small junction capacitance
- Pb Free
- This product itself will remain within RoHS compliant version.

Description

- EAPLP04RRKA0 is a phototransistor in miniature package which is molded in a black plastic with spherical top view lens. The device is spectrally matched to infrared emitting diode.

Applications

- Optoelectronic switch
- VCR · Video Camera
- Floppy disk drive
- Infrared applied system

Device Selection Guide

| | |
|----------------|------------|
| Chip Materials | Lens Color |
| Silicon | Black |

Absolute Maximum Ratings (Ta=25°C)

| Parameter | Symbol | Rating | Unit |
|---|-----------|-----------|------|
| Collector-Emitter Voltage | V_{CEO} | 30 | V |
| Emitter-Collector-Voltage | V_{ECO} | 5 | V |
| Collector Current | I_C | 40 | mA |
| Operating Temperature | T_{opr} | -25~+85 | °C |
| Storage Temperature | T_{stg} | -40~ +100 | °C |
| Lead Soldering Temperature | T_{sol} | 260 | °C |
| Power Dissipation at (or below) 25°C Free Air Temperature | P_c | 75 | mW |

Notes: *1:Soldering time \leq 5 seconds.

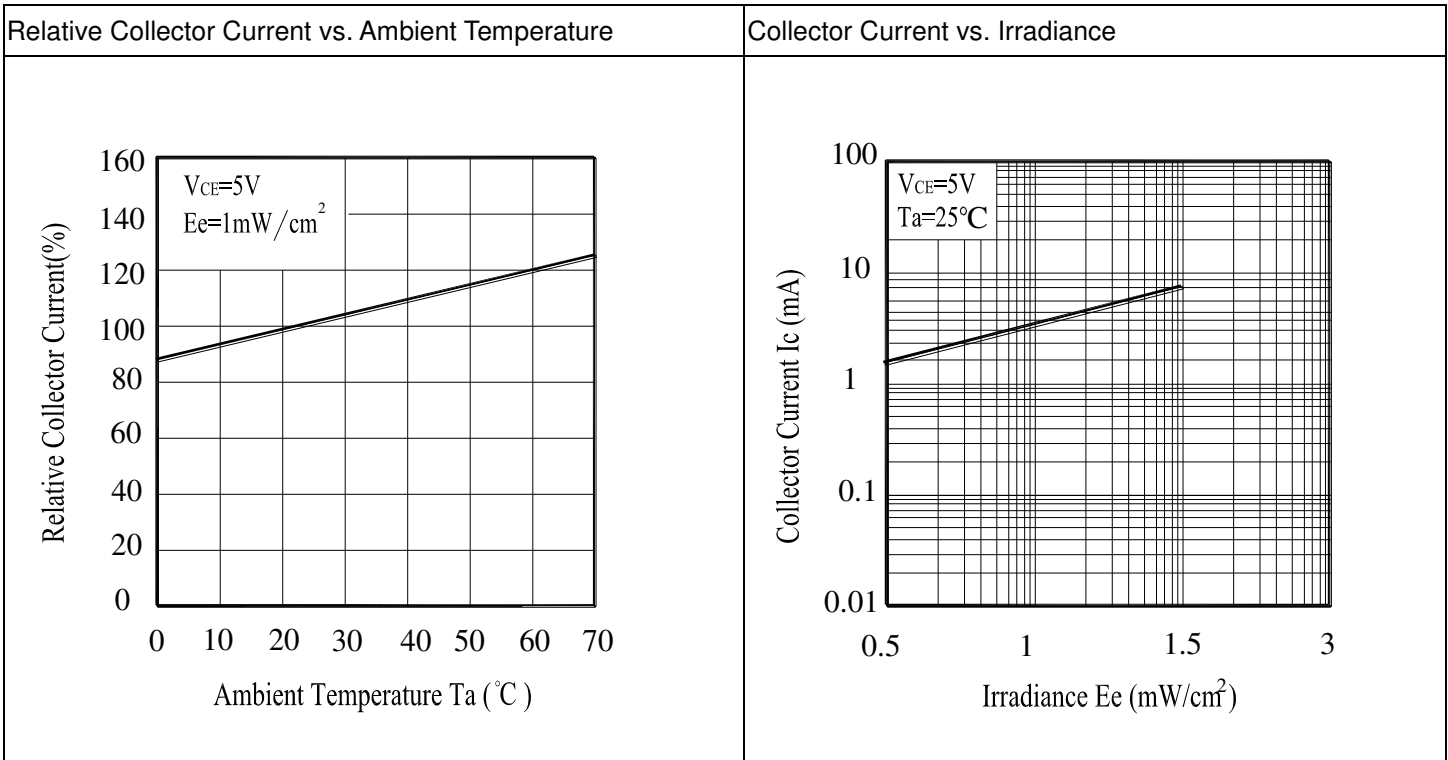
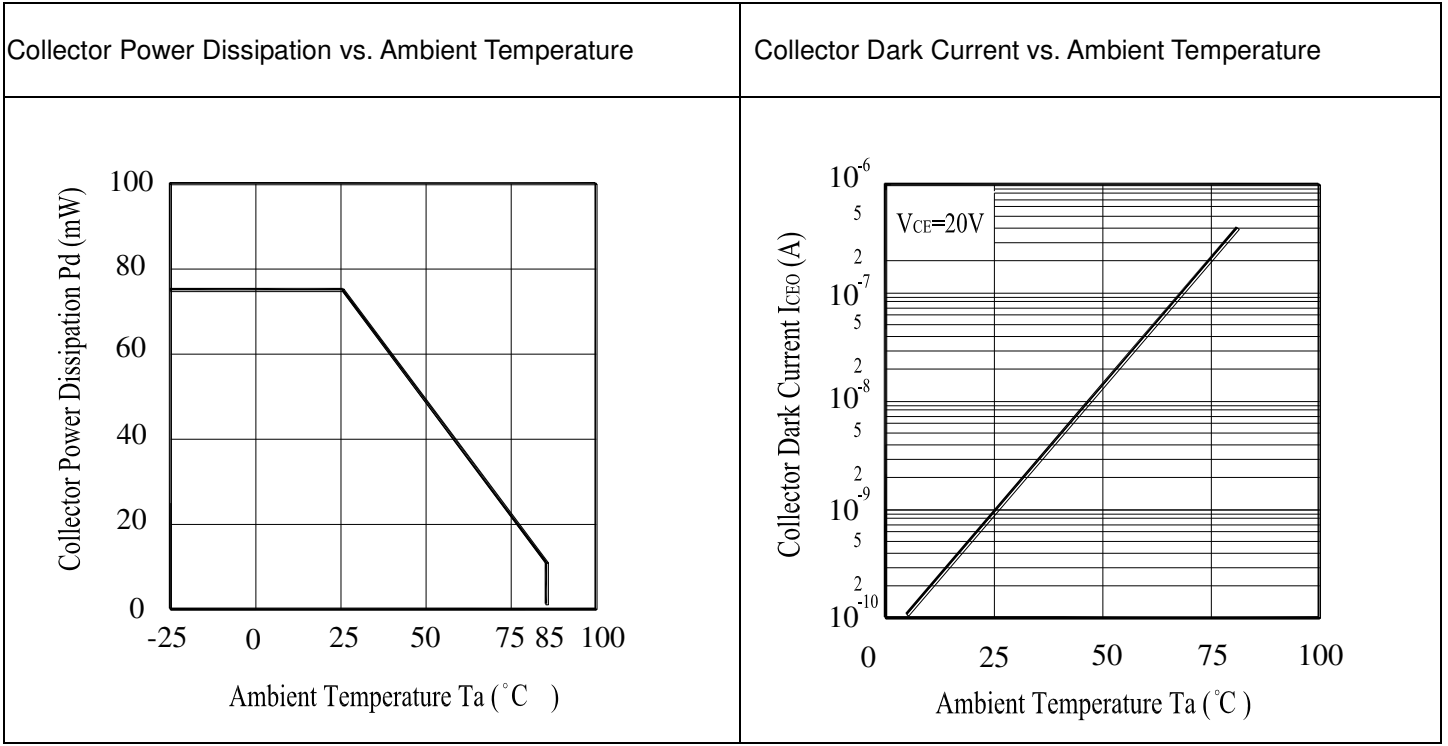
Electro-Optical Characteristics (Ta=25°C)

| Parameter | Symbol | Min. | Typ. | Max. | Unit | Condition |
|---------------------------------------|-----------------|-------|-------|-------|---------|---|
| Collector – Emitter Breakdown Voltage | BV_{CEO} | 30 | ----- | ----- | V | $I_C=100\mu A$ $E_e=0mW/cm^2$ |
| Emitter-Collector Breakdown Voltage | BV_{ECO} | 5 | ----- | ----- | V | $I_E=100\mu A$ $E_e=0mW/cm^2$ |
| Collector-Emitter Saturation Voltage | $V_{CE(sat)}$ | ----- | ----- | 0.4 | V | $I_C=2mA$ $E_e=1mW/cm^2$ |
| Rise Time | t_r | ----- | 15 | ----- | μS | $V_{CE}=5V$ $I_C=1mA$ $RL=1000\Omega$ |
| Fall Time | t_f | ----- | 15 | ----- | | |
| Collector Dark Current | I_{CEO} | ----- | ----- | 100 | nA | $E_e=0mW/cm^2$ $V_{CE}=20V$ |
| On State Collector Current | $I_{C(on)}$ | 0.53 | ----- | 3.41 | mA | $E_e=0.555mW/cm^2$ $V_{CE}=5V$ |
| Rang Of Spectral Bandwidth | $\lambda_{0.5}$ | 700 | ----- | 1200 | nm | ---- |
| Wavelength of Peak Sensitivity | λ_P | ----- | 940 | ----- | nm | ---- |

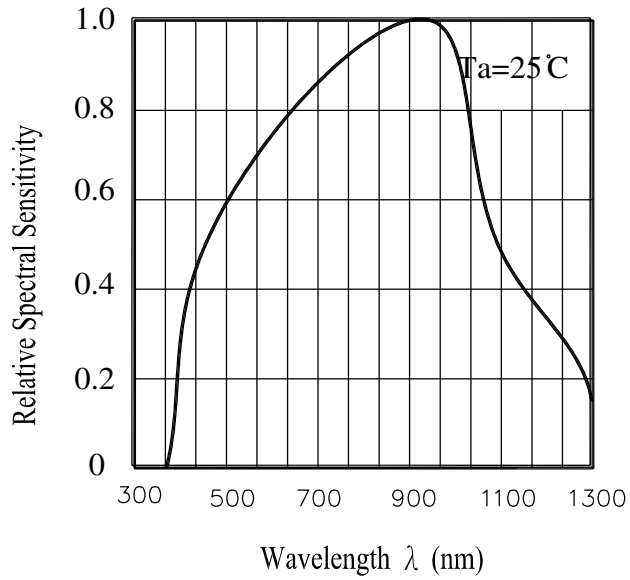
Ranks

| Parameter | Symbol | Min | Max | Unit | Test condition |
|-----------|-------------|------|------|------|-----------------------------------|
| 7-3 | $I_{C(ON)}$ | 0.53 | 1.19 | mA | $V_{CE}=5V$ $E_e=0.555mW/cm^2$ |
| 7-2 | | 0.88 | 1.70 | | |
| 7-1 | | 1.24 | 2.21 | | |
| 6-2 | | 1.59 | 2.98 | | |
| 6-1 | | 1.77 | 3.41 | | |

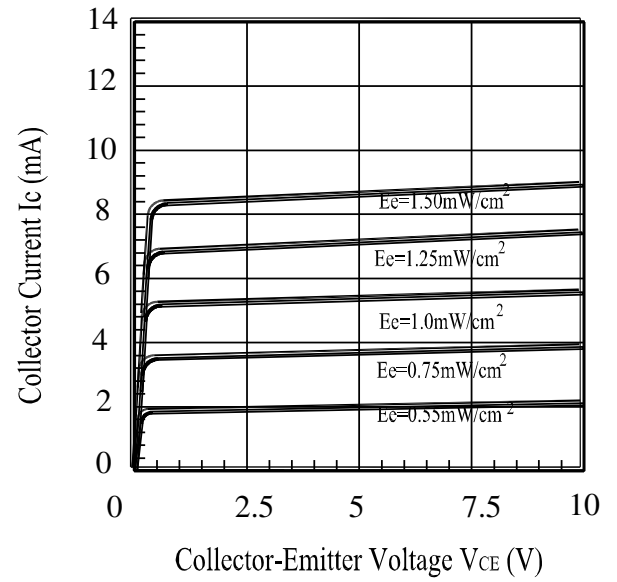
Typical Electro-Optical Characteristics Curves



Spectral Sensitivity

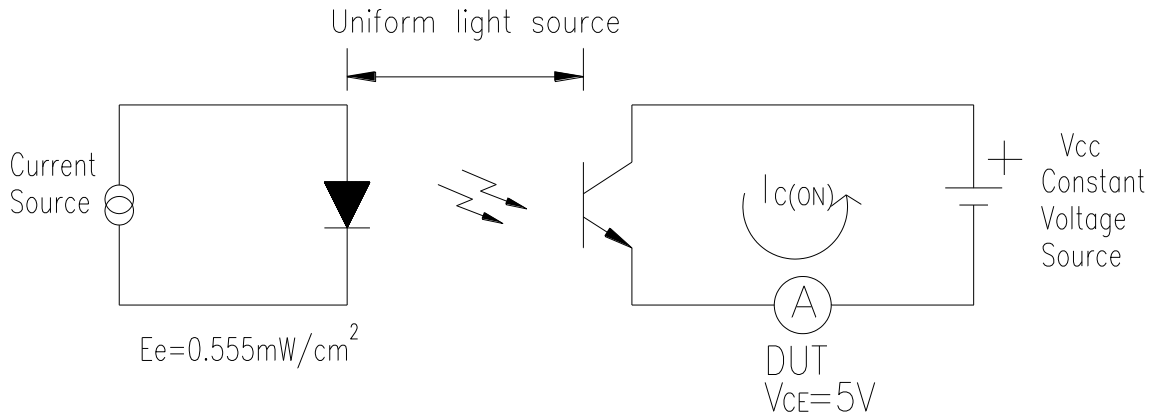


Collector Current vs. Collector-Emitter Voltage

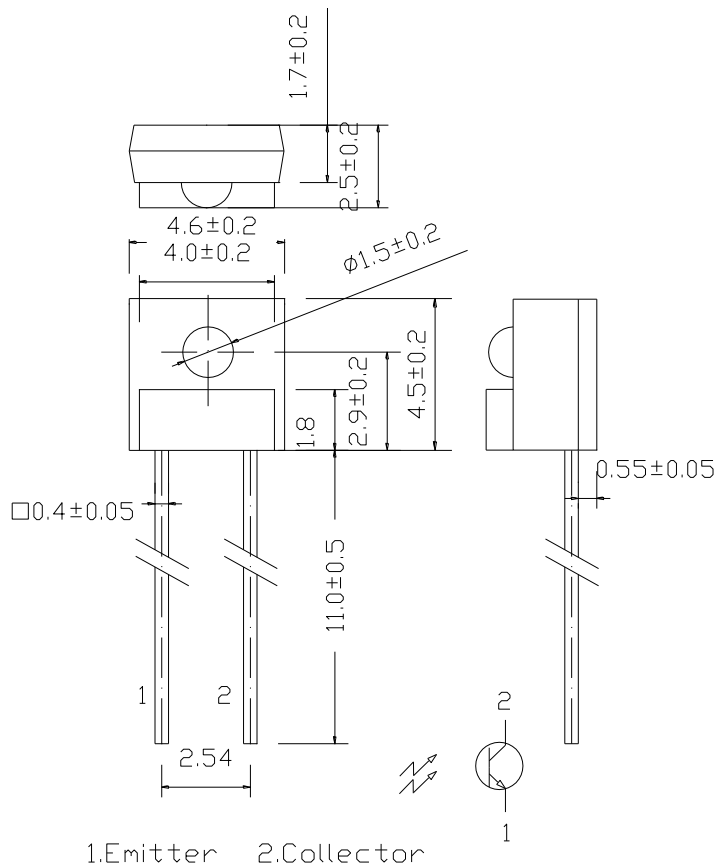


Test method

Light current test method for PT:



Package Dimension

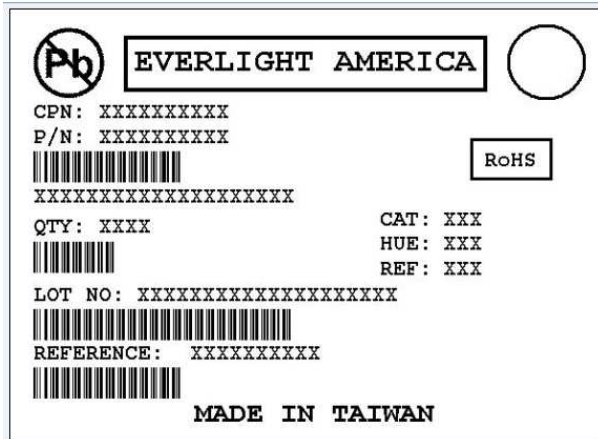


Note: Tolerances unless dimensions $\pm 0.25\text{mm}$

Packing Quantity Specification

1. 1000PCS/1Bag,10Bags/1Box
2. 10Boxes/1Carton

Label Explanation



- CPN: Customer's Product Number
- P/N: Product Number
- QTY: Packing Quantity
- CAT: Luminous Intensity Rank
- HUE: Dom. Wavelength Rank
- REF: Forward Voltage Rank
- LOT No: Lot Number
- X: Month
- Reference: Identify Label Number

Notes

1. Above specification may be changed without notice. EVERLIGHT Americas will reserve authority on material change for above specification.
2. When using this product, please observe the absolute maximum ratings and the instructions for using outlined in these specification sheets. EVERLIGHT Americas assumes no responsibility for any damage resulting from use of the product which does not comply with the absolute maximum ratings and the instructions included in these specification sheets.
3. These specification sheets include materials protected under copyright of EVERLIGHT Americas corporation. Please don't reproduce or cause anyone to reproduce them without EVERLIGHT's Americas consent.