



Chipsmall Limited consists of a professional team with an average of over 10 year of expertise in the distribution of electronic components. Based in Hongkong, we have already established firm and mutual-benefit business relationships with customers from,Europe,America and south Asia,supplying obsolete and hard-to-find components to meet their specific needs.

With the principle of "Quality Parts,Customers Priority,Honest Operation,and Considerate Service",our business mainly focus on the distribution of electronic components. Line cards we deal with include Microchip,ALPS,ROHM,Xilinx,Pulse,ON,Everlight and Freescale. Main products comprise IC,Modules,Potentiometer,IC Socket,Relay,Connector.Our parts cover such applications as commercial,industrial, and automotives areas.

We are looking forward to setting up business relationship with you and hope to provide you with the best service and solution. Let us make a better world for our industry!



## Contact us

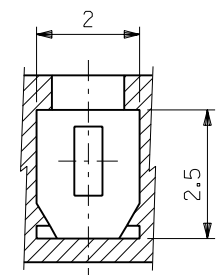
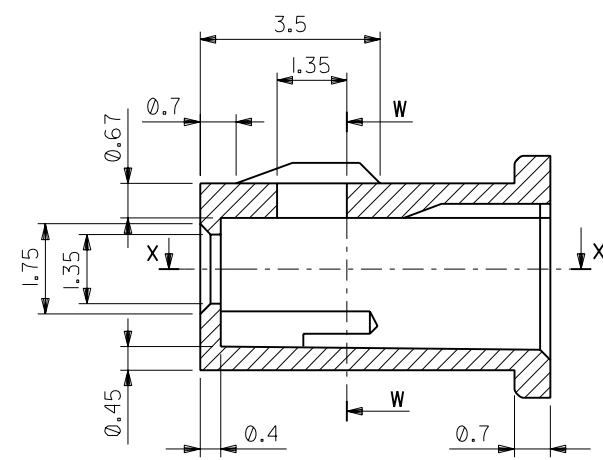
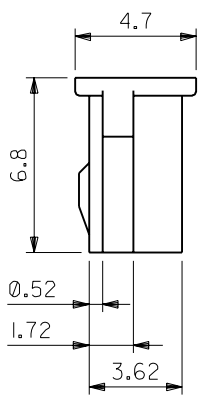
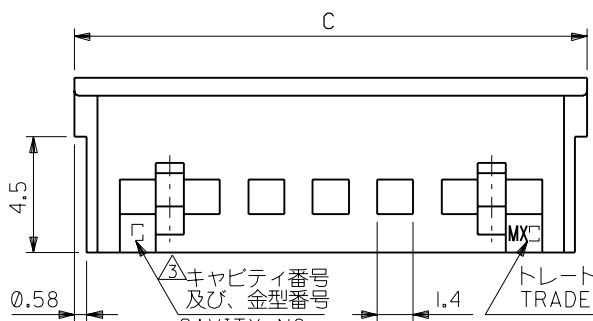
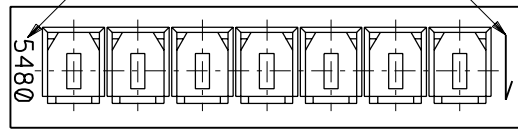
Tel: +86-755-8981 8866 Fax: +86-755-8427 6832

Email & Skype: info@chipsmall.com Web: www.chipsmall.com

Address: A1208, Overseas Decoration Building, #122 Zhenhua RD., Futian, Shenzhen, China



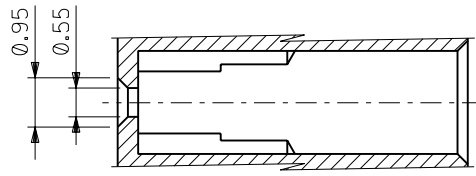
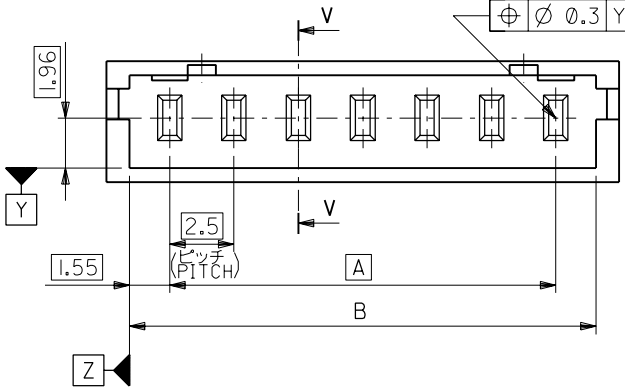
製品番号  
ENG. NO.      回路番号1  
CIRCUIT NO. 1



③キャビティー番号  
及び、金型番号  
CAVITY NO.  
MOLD NO.

④トレードマーク  
TRADE MARK

⊕ ⌀ 0.3 Y Z



SECTION X-X  
(SCALE 10:1)

39.9	38.1	35	39-01-0153	5480-15	15
37.4	35.6	32.5	-0143	-14	14
34.9	33.1	30	-0133	-13	13
32.4	30.6	27.5	-0123	-12	12
29.9	28.1	25	-0113	-11	11
27.4	25.6	22.5	-0103	-10	10
24.9	23.1	20	-0093	-09	9
22.4	20.6	17.5	-0083	-08	8
19.9	18.1	15	-0073	-07	7
17.4	15.6	12.5	-0063	-06	6
14.9	13.1	10	-0053	-05	5
12.4	10.6	7.5	-0043	-04	4
9.9	8.1	5	-0033	-03	3
7.4	5.6	2.5	39-01-0023	5480-02	2
C	B	A	EDP NO.	ENG. NO.	極数 CIRCUIT

注記  
NOTES

- 適用ターミナル : 5479PBT  
APPLICABLE TERMINAL : 5479PBT
- 嵌合相手 : 5483-NA, 5484-NA  
MATES WITH : 5483-NA, 5484-NA
- ③キャビティー番号 : 1桁~2桁の数字  
金型番号 : アルファベット 1文字にて構成。  
(TO CAVITY NO.)  
AND BY 1 LETTER OF ALPHABET (TO MOLD NO.)

④トレードマーク : MX プラス 1 文字の製造工場を示す  
アルファベットにて構成。  
但し, "J" は JAPAN を示す。  
FORMED BY MX AND 1 MORE ALPHABET  
WHICH MEAN THE MANUFACTORY.  
PROVIDED "J" MEANS JAPAN.

角度 ANGLE	±3°				
30 以上 OVER	+0.3				
10 以上 30 未満 OVER UNDER	+0.25	A	変更 REVISED (JC80093)	Y.K. Y.M.	97/7/29
10 未満 UNDER	+0.2	0	新規作成 RELEASED (JC70937)	T.A. Y.M.	97/4/23
一般公差 GENERAL TOLERANCES		LTR	変更内容 REVISION RECORD	DR. CHK.	日付 DATE

材料 MATERIAL ガラス繊維 15% PBTP  
G.F. 15% PBTP  
UL 94V-0

仕上げ FINISH ———

適用電線範囲 WIRE RANGE ———

被覆外径 INS. RANGE ———

DRAWN BY '97/4/23 T.ASAKAWA    CHK'D BY '97/7/29 Y.MIZUNO

APP'D BY '97/7/29 M.FUKUSHIMA    尺度 SCALE 5 : 1

**molex** MOLEX-JAPAN CO.,LTD.  
日本モレックス株式会社

REVISE ONLY ON CAD SYSTEM  
TITLE 名称  
2.5 LOW PROFILE HOUSING

DWG. NO. SD-5480-N    REV A