



Chipsmall Limited consists of a professional team with an average of over 10 year of expertise in the distribution of electronic components. Based in Hongkong, we have already established firm and mutual-benefit business relationships with customers from,Europe,America and south Asia,supplying obsolete and hard-to-find components to meet their specific needs.

With the principle of “Quality Parts,Customers Priority,Honest Operation,and Considerate Service”,our business mainly focus on the distribution of electronic components. Line cards we deal with include Microchip,ALPS,ROHM,Xilinx,Pulse,ON,Everlight and Freescale. Main products comprise IC,Modules,Potentiometer,IC Socket,Relay,Connector.Our parts cover such applications as commercial,industrial, and automotives areas.

We are looking forward to setting up business relationship with you and hope to provide you with the best service and solution. Let us make a better world for our industry!



Contact us

Tel: +86-755-8981 8866 Fax: +86-755-8427 6832

Email & Skype: info@chipsmall.com Web: www.chipsmall.com

Address: A1208, Overseas Decoration Building, #122 Zhenhua RD., Futian, Shenzhen, China



Capacitive Proximity Sensors Mounting Accessories Tank Mounting Wells



- Delrin or Teflon Housing materials
- For M18 or M30 capacitive proximity sensors
- Can be used with CA and EC series
- Ideal for food/pharmaceutical applications
- Band clamp secures sensor in well
- Extends life of sensors

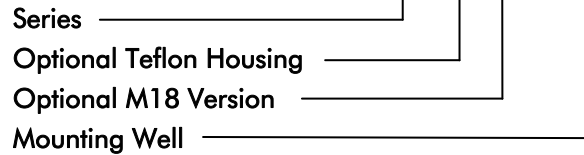
Product Description

Sensor wells are used to adapt tubular proximity sensors to a wide variety of vessels for level detection applications. These wells keep systems sealed prior to sensor installation, as well

as during sensor removal. Reliability and performance is improved because the sensor is isolated from fluids and materials.

Ordering Key

EC T 18-WELL



Type Selection

Housing Material

Delrin
Teflon

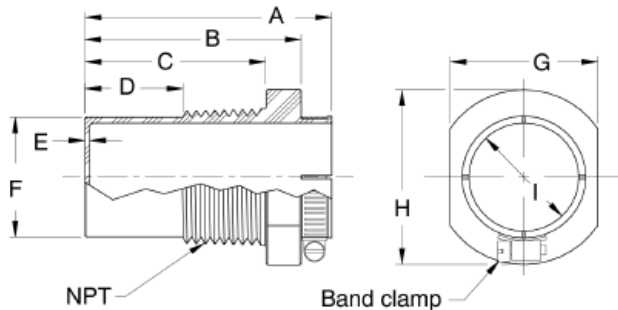
For M18 Sensors

EC18-WELL
ECT18-WELL

For M30 Sensors

EC-WELL
ECT-WELL

Dimensions



Model	A	B	C	D	E	F	NPT	G	H	I
EC.18-WELL	59.7 (2.35)	48.1 (1.90)	38.9 (1.53)	16.5 (0.65)	1.27 (0.05)	22.6 (0.89)	3/4 x 14	31.5 (1.24)	37.3 (1.47)	18.1 (0.71)
EC.-WELL					1.91 (0.08)	36.6 (1.44)		1-1/4 x 11.5	44.5 (1.75)	50.0 (1.97)