



Chipsmall Limited consists of a professional team with an average of over 10 year of expertise in the distribution of electronic components. Based in Hongkong, we have already established firm and mutual-benefit business relationships with customers from,Europe,America and south Asia,supplying obsolete and hard-to-find components to meet their specific needs.

With the principle of “Quality Parts,Customers Priority,Honest Operation,and Considerate Service”,our business mainly focus on the distribution of electronic components. Line cards we deal with include Microchip,ALPS,ROHM,Xilinx,Pulse,ON,Everlight and Freescale. Main products comprise IC,Modules,Potentiometer,IC Socket,Relay,Connector.Our parts cover such applications as commercial,industrial, and automotives areas.

We are looking forward to setting up business relationship with you and hope to provide you with the best service and solution. Let us make a better world for our industry!



## Contact us

Tel: +86-755-8981 8866 Fax: +86-755-8427 6832

Email & Skype: info@chipsmall.com Web: www.chipsmall.com

Address: A1208, Overseas Decoration Building, #122 Zhenhua RD., Futian, Shenzhen, China



WinTotal v6.0.00  
Wire marking and label  
printing software





# License

---

## Tyco Electronics WinTotal Licence Agreement

Please read this Licence Agreement carefully before installing the software. By installing the software you confirm your agreement to all the terms and conditions listed in this License Agreement regarding your company's use of the Tyco Electronics Software Programme entitled WinTotal.

This is a legal Agreement between you, the end user, and Tyco Electronics Corporation (Tyco Electronics). BY INSTALLING THIS SOFTWARE YOU ARE AGREEING TO BECOME BOUND BY THE TERMS OF THIS AGREEMENT. IF YOU DO NOT AGREE TO THE TERMS OF THIS AGREEMENT, DO NOT DOWNLOAD THE SOFTWARE.

- 1. GRANT of LICENSE** WinTotal is licensed, not sold, to you for use only under this licence, and Tyco Electronics reserves any rights not expressly granted to you. Tyco Electronics grants to you, the end user, the right to use this copy, including written materials if any, of the WinTotal programme at the location, company and address, to which Tyco Electronics issued this copy of WinTotal. WinTotal is owned by Tyco Electronics and is protected by U.S. copyright laws and international treaty provisions. You agree not to alter, merge, duplicate, decompile, or reverse engineer, copy for other locations, or otherwise make this software available to any person or entity outside this location. All copies made by you are subject to the terms and conditions of this Agreement.
- 2. OTHER RESTRICTIONS**
  - You may not rent or lease WinTotal to anyone.
  - You agree to notify Tyco Electronics promptly if "bugs" or seemingly incorrect or anomalous results are discovered or produced by the use of WinTotal.
  - You agree that WinTotal, including written materials if any, may be modified or updated by Tyco Electronics at any time, and you agree to use any updated version of WinTotal after you are notified of such modifications or updates.
  - By installing the software, you acknowledge that you have read and understood the Tyco Electronics disclaimer of Warranty and Limitation of Liability, set forth below.
  - You agree to use reasonable efforts to protect against the unauthorised copying and use of WinTotal by others.
- 3. DISCLAIMER OF WARRANTY** THE WinTotal PROGRAM AND ACCOMPANYING WRITTEN MATERIALS ARE PROVIDED "AS IS" WITHOUT WARRANTY OF ANY KIND. THE ENTIRE RISK AS TO THE RESULTS AND PERFORMANCE OF THE WinTotal PROGRAMME IS ASSUMED BY YOU. TYCO ELECTRONICS DOES NOT WARRANT THAT THE FUNCTIONS CONTAINED IN WinTotal WILL MEET YOUR REQUIREMENTS OR THAT THE OPERATION OF WinTotal WILL BE UNINTERRUPTED OR ERROR FREE, OR THAT PROGRAMME DEFECTS WILL BE CORRECTED.
- 4. LIMITED WARRANTY-MEDIA** THE MEDIUM ON WHICH THE SOFTWARE IS ENCODED IS WARRANTED TO BE FREE FROM DEFECTS IN MATERIAL AND WORKMANSHIP UNDER NORMAL USE FOR A PERIOD OF SIXTY (60) DAYS FROM THE DATE OF DELIVERY TO YOU AS EVIDENCED BY A COPY OF YOUR RECEIPT. THE ENTIRE LIABILITY OF TYCO ELECTRONICS AND YOUR EXCLUSIVE REMEDY IF THE MEDIUM IS DEFECTIVE SHALL BE THE REPLACEMENT OF THE SOFTWARE.
- 5. EXCLUSION OF ALL OTHER WARRANTIES** EXCEPT AS EXPRESSLY PROVIDED ABOVE, TYCO ELECTRONICS DISCLAIMS ALL WARRANTIES, EITHER EXPRESS, IMPLIED, OR STATUTORY, INCLUDING BUT NOT LIMITED TO ANY WARRANTY OF MERCHANTABILITY OR FITNESS FOR

ANY PURPOSE, EVEN IF TYCO ELECTRONICS HAS BEEN ADVISED OF SUCH PURPOSE. THIS AGREEMENT GIVES YOU THE SPECIFIC LEGAL RIGHTS. SOME COUNTRIES DO NOT ALLOW THE EXCLUSION OF WARRANTIES, SO THAT THE ABOVE EXCLUSION MAY NOT APPLY TO YOU.

**6. LIMITATION OF LIABILITY** TYCO ELECTRONICS SHALL NOT BE LIABLE FOR ANY LOSS, DAMAGE, OR DELAY DURING SHIPMENT OR FOR ANY LOSS OF PROFITS, LOSS OF USE, INTERRUPTION OF BUSINESS, NOR FOR INDIRECT, SPECIAL, INCIDENTAL, OR CONSEQUENTIAL DAMAGES OF ANY KIND WHATEVER UNDER THIS AGREEMENT OR OTHERWISE, WHETHER OR NOT TYCO ELECTRONICS HAS BEEN ADVISED OF THE POSSIBILITY OF SUCH DAMAGES.

**7. TERMINATION** This Licence will automatically terminate without notice from Tyco Electronics if you fail to comply with any term or condition of this Agreement. You agree, upon such termination, to return WinTotal or destroy it along with any backup or other copies in your possession.

**8. COMPLETE AGREEMENT** This Agreement constitutes the sole and complete understanding between the parties with respect to WinTotal and its use, and may not be varied except in writing signed by an authorised signatory of Tyco Electronics. You agree that you may not rely on any representations concerning WinTotal to the extent they vary from this Agreement, and such representations, if any, will neither add to nor vary the terms of this Agreement.

**9. CHOICE OF LAWS** This Agreement is governed by the laws of State of New York.

**10. ASSIGNMENT** You may neither assign any right nor obligation under this Agreement and any attempted assignment or delegation shall be void.

**11. INVALID PROVISIONS** If any of the provisions of this Agreement are invalid under any applicable statute or rule of law, they are to that extent deemed omitted.

## System Requirements

---

<b>Computer:</b>	IBM compatible PC
<b>Processor:</b>	Processor Requirements are the same as for the Windows Operating System Processor Requirements
<b>Operating system:</b>	Windows XP SP3, Vista , 7, 8 and 8.1 Windows Server 2003, 2008 and 2012 (32bit or 64bit)
<b>Screen Resolution:</b>	1024 x 768 pixels
<b>Disk space required:</b>	100MB of free disk space

## Introduction

---

# WinTotal



The WinTotal software by TE Connectivity is a Cable Identification and Labeling program.

This powerful package makes printing TE Connectivity Identification products simple using pre-loaded templates.

WinTotal features a graphical user interface to simplify operator training and minimize errors.

Data can be manually typed into the program or using one of its import functions data from ASCII text files and databases can be imported. eg. Microsoft Access and Excel.

Customized templates can also be created for new products. Custom specific layouts can also be created where dimensions and data formatting can be specified.

WinTotal is designed primarily for printing text however it is possible to print graphics and a range of barcodes.

WinTotal comes pre-loaded with TE Connectivity Identification product and TE Connectivity recommended printer drivers.

WinTotal uses its own built in printer drivers to print to TE Connectivity recommended printers to ensure settings and parameters are correct at the time of printing.

It also allows the use of standard Windows drivers. Mark quality and permanence cannot be guaranteed when non-TE Connectivity tested printers and ribbons are used.

### **Important Information:**

Please make regular backup copies of all data files.

Please see the [Data Management/Backup](#) topic for more information on files to backup.

## Installing and Activation

---

### **Installing**

WinTotal is installed using an installer program. The installation and program can be displayed in the following languages.

**Chinese**  
**Deutsch** (German)  
**English**  
**Español** (Spanish)  
**Français** (French)  
**Italian**  
**Japanese**  
**Korean**  
**Nederlands** (Dutch)  
**Norsk** (Norwegian)  
**Portuguese (Brazil)**  
**Russian**  
**Turkish**

#### **NOTE:**

The installer program is not UNICODE therefore the Chinese, Japanese, Korean and Russian languages are only visible in the Installer if the **Windows Region and Language Settings** for "**Language For Non Unicode Programs**" option is set to that language.

WinTotal is UNICODE so any language can be selected regardless of the Windows configuration. WinTotal will be set by default to the same language as selected in the Installer, this can be changed later in WinTotal via the [Options](#) tab in the [System Setup](#) screen.

Please follow the instructions as per the installer program.

---

### **Activation**

Each purchased copy of WinTotal entitles the user to 1 License supplied within the CD-ROM case.

A License is issued in the form of either a USB Hardware Key or a Serial Number depending on the version ordered.

**EC9816-000**  
**WINTOTAL-6-DONGLE**  
Supplied with a USB Hardware Key

**EC9817-000**  
**WINTOTAL-6-END-USER-LICENCE**  
Supplied with a Serial Number which must be registered online.

For more information see the [Software Licensing](#) topic.



## Software Licensing

---

Each purchased copy of WinTotal entitles the user to 1 License supplied within the CD-ROM case.

A License is issued in the form of either a USB Hardware Key or a Serial Number depending on the version ordered.

**EC9816-000**

**WINTOTAL-6-DONGLE**

Supplied with a USB Hardware Key

**EC9817-000**

**WINTOTAL-6-END-USER-LICENCES**

Supplied with a Serial Number which must be registered online.

If when started WinTotal cannot detect a valid [Serial Number Registration](#) or [USB Hardware Key Registration](#) the program will function fully for a 14 day **Evaluation Period** beginning from the first time WinTotal v6 is installed on a PC.

Once the Evaluation Period has expired then the program will run in [Demo Mode](#).

The [WinTotal - Evaluation Period](#) screen will be displayed each time WinTotal is started or a print action is applied within the **Evaluation Period** displaying the number of days left.

For more information see the [Serial Number Registration](#) or [USB Hardware Key Registration](#) topic depending on the license purchased.

## Serial Number Registration

---

If the part number below was ordered then a unique serial number will be printed on the CD-ROM.

**EC9817-000**  
**WINTOTAL-6-END-USER-LICENCE**

This serial number is your license so please store this in a safe place.

The serial number will contain 5 banks of 5 digits

A serial number for WinTotal v6 will be as below where the \* characters will contain unique letters/ numbers

**W\*\*\*\*-T\*\*\*\*-A\*\*\*\*-C\*\*\*\*-S\*\*\*\***

If the serial number does not contain the exact first letters for each bank as above then it is not for WinTotal v6 and cannot be used.

If WinTotal is not registered the [WinTotal - Unregistered](#) screen will be displayed where the program can be registered via the [Register Serial Number](#) option.

If the program will not correctly register please contact [Technical Support](#).

---

### Important Information:

- WinTotal can be installed multiple times but should **ONLY** be registered once.
- WinTotal licenses are not transferable between PC's. If this functionality is required then a **EC9816-000 WINTOTAL-6-DONGLE** version should be purchased. See the [USB Hardware Key Registration](#) topic for more information.
- WinTotal allows for 2 different computers to be registered using 1 serial number. This is to cover; upgrades, loss, damaged or replaced computers **NOT** multiple installations. ( this is in breach of the License Agreement )
- Once 2 different computers have been registered no further registration can take place ( unless authorized from TE Connectivity Product Management )
- Only computers that require to [Print](#) need to be registered. Unregistered copies of WinTotal will run in [Demo Mode](#). This has full functionality but does not allow printing. For more information see the [Demo Mode](#) topic.

## USB Hardware Key Registration

---

If the part number below was ordered then a USB Hardware Key will be attached to the inside of the CD-ROM case.

### **EC9816-000 WINTOTAL-6-DONGLE**

This USB Hardware Key is your license.

The label on the USB Hardware Key must have **WinTotal v6.\*.\*\*** on the label. **Note:** \*.\* will contain numbers used for sub versions of WinTotal v6. The first number must be a **6**.

USB Hardware Keys for WinTotal v4 and v5 will not work in WinTotal v6.

If an old key is inserted the user will be prompted about this in the [WinTotal - Unregistered](#) screen.

For the USB Hardware Key to function a please insert the key and wait for the driver to be automatically installed by Microsoft Windows. When completed WinTotal can be launched.

If the USB Hardware Key is removed the program will revert to [Demo Mode](#).

If a v6 USB Hardware Key is not detected when the program is started please check the USB port is working and that you have no USB conflicts in the Windows Device Manager.

If all is correct check if the USB Hardware Key light is on.

If the light is not and the Windows Device Manager shows no errors then please contact [Technical Support](#).

---

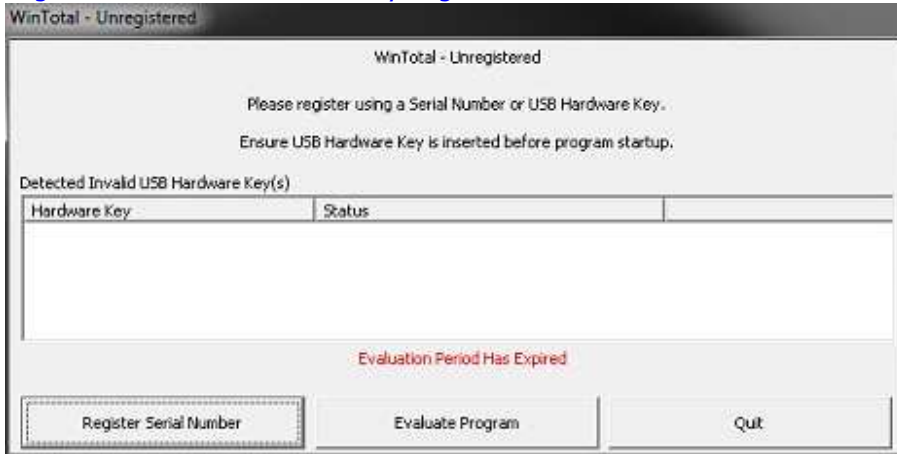
### **Important Information:**

- Only computers that require to [Print](#) need to be registered. Unregistered copies of WinTotal will run in [Demo Mode](#). This has full functionality but does not allow printing. For more information see the [Demo Mode](#) topic.
- The USB Hardware Key used for WinTotal v4, v5 and v6 is physically identical but is internally coded differently. Never insert more than 1 of these keys at a time to the PC as the program will only check the first found key. Newer version USB Hardware Keys will work on older versions. For Example a v6 USB Hardware Key will also license v4 and v5 versions of WinTotal. If you need multiple versions only insert the highest version USB Hardware Key.

## WinTotal - Unregistered

---

The **WinTotal - Unregistered** screen is displayed when WinTotal cannot detect a valid [Serial Number Registration](#) or [USB Hardware Key Registration](#)



It will display information if an invalid **USB Hardware Key** is inserted. It will also display a warning if the **WinTotal Evaluation Period** has expired.

The screen has the following options

[Register Serial Number](#) - use this if you have purchased **EC9817-000 WINTOTAL-6-END-USER-LICENCE** - supplied with a Serial Number. See the [Serial Number Registration](#) topic for more information.

**Evaluate Program** - use this to run the program unregistered. This will display the [WinTotal - Evaluation Period](#) screen with a status of the **Evaluation Period**.

If this screen shows and you have a **WinTotal v6 USB Hardware Key** inserted please see the [USB Hardware Key Registration](#) topic.

## Register Serial Number

The **Register Serial Number** screen is used to enter the **Software Registration** details and should be used if the following WinTotal version was purchased.

**EC9817-000**

**WINTOTAL-6-END-USER-LICENCE**

Supplied with a Serial Number which must be registered online.

- Enter the **Customer Information** with a valid Email address. This will be used as the confirmation address for the registration details. Please enter data correctly as this may be need to provide support in the future or to retrieve a lost serial number.
- Enter the **Serial Number** supplied with the software.

There are then 4 different ways to register, these options will only be available if the mandatory **Customer Information** is entered correctly.

### Screen Options

#### **Automatic Web Registration**

When selected this option will connect to our registration server, retrieve the Unlock Code and register the program automatically.

**Note:** Valid Internet Connection Required

Depending on the network security settings this option may not always be allowed to function. If it does not please use one of the other registration methods.

### **Manual Web Registration**

When selected the registration data is transferred to one of the selected Internet pages and give an Unlock Code. This can then be entered into the Unlock Code box in the registration screen.

**Note:** Valid Internet Connection Required

Some Internet Browsers can append a space to the end of the unlock code when copying to the Windows Clipboard. Please ensure there are no spaces at the end of the Unlock Code box in the registration screen.

### **Print Registration Data**

This will allow the registration details to be printed to any Windows printer available on your system.

This printout can then be taken to any computer with internet access and the data on the form entered into the web address (which is also printed).

**Note:** Valid Internet Connection NOT Required on the machine where WinTotal is installed.

### **Save Registration Data**

This option saves your registration details to a file. This file can then be transferred to disk, usb drive or network.

If this file is opened on a computer with a valid internet connection then the same web page as in the **Manual Web Registration** mode will be displayed giving an Unlock Code. This can then be entered into the Unlock Code box in the registration screen.

---

If you have no internet access available to you either:

- E-mail the file created using the **Save Registration Data** to your **Dealer** or [Technical Support](#).
- Fax the printed registration data created using the **Print Registration Data** option to your **Dealer** or [Technical Support](#).

## WinTotal - Evaluation Period

---

The **WinTotal - Evaluation Period** screen is displayed when a WinTotal is not registered.



It will display the number of days left in the fully functional **Evaluation Period**.

If 0 days are shown then then WinTotal will run in [Demo Mode](#).

## Demo Mode

---

If when started WinTotal cannot detect a valid [Serial Number Registration](#) or [USB Hardware Key Registration](#) the program will function fully for a 14 day **Evaluation Period** beginning from the first time WinTotal v6 is installed on a PC.

Once the Evaluation Period has expired then the program will run in [Demo Mode](#).

The [WinTotal - Evaluation Period](#) screen will be displayed each time WinTotal is started or a print action is applied within the **Evaluation Period** displaying the number of days left.

For more information see the [Serial Number Registration](#) or [USB Hardware Key Registration](#) topic depending on the license purchased.

### **Demo Mode**

Once the **Evaluation Period** has expired the program will function but the following commands will not allow printing from any of the functions below. A message telling the user this information will be displayed.

[Database Printing](#)

[Print](#)

[Advanced Print](#)

[Manual Print](#)

[Paper Report](#)

[Print Log](#)

The [XMT Import Server](#) function will also be disabled.

All other functions will work on Unregistered versions of WinTotal allowing the user to create, edit, delete and import data.



## Printer Setup

---

WinTotal uses its own built in drivers so to select the correct driver select the **Printer** in the [Printers](#) tab of the [System Setup](#) screen.

Although WinTotal uses its own drivers it must print via the Microsoft Windows Print Spooler.

For the correct **Port** to be visible in the [Printers](#) tab of the [System Setup](#) screen and the [Print](#) screen a valid **Printer** must be in the **Windows Control Panel**.

If the **Port** required is not available then please close WinTotal and add a **Printer** to this **Port** in the **Windows Control Panel**

Please follow the printer documentation on how to install the driver.

It is recommended that a "**Generic / Text Only**" driver is installed for each **Port** required to **Print** from **WinTotal**.



Please contact your IT Department if this is required.

## Starting WinTotal

---

WinTotal can be launched from the WinTotal shortcut.

This is created by the installer on the common **Desktop** folder and the all users **Start Menu**

**Note:**

On Windows 8 and 8.1 the shortcut is not created on the **Start Screen**. This can be done by right clicking the **Desktop** shortcut and selecting **Pin To Start**

## Upgrading From v5 to v6

---

For a detailed list of changes and new features please see the [Release History](#) topic.

Below are the critical changes from v5 to v6 that a system administrator and user should know.

---

### **New File Formats**

WinTotal v6 is using Unicode file formats allowing any language(s) to be used on the same **Legend** regardless of the Microsoft Windows settings.

For example a Microsoft Windows PC running in English can now enter or copy and paste data in Chinese, Russian and English. This was not previously possible in WinTotal v5.

For this reason the files used to save **Sets** and **User Defined Layouts** are different to in v5.

#### **Set Files**

Set files from v5 have a **.wdf** file extension.

These files can be opened in v6 but not modified or printed.

The v5 files can only be opened via the [Open Set](#) command and are not visible in the **Selected Set** list box.

If a v5 set (.wdf) is opened the user will be asked to convert the file to the new file format **.wdfu**.

Due to Products, Font and Features changes between v5 and v6 some products may have to be converted to new products and fonts.

For more information please read the [Open Set](#) topic.

#### **NOTE:**

The original v5 sets will not be modified.  
WinTotal v6 can only save to v6 (.wdfu) format Sets.

#### **User Defined Layouts**

User Defined Layouts in v5 have a **.wup** extension.

These files can be imported into v6 where they will be saved with the new file extension **.wupu**.

For more information please read the [User Defined Layouts](#) topic.

**NOTE:** The original User Defined Layouts will not be modified.  
WinTotal v6 can only save to v6 (.wupu) User Defined Layouts.

---

### **Important!**

Please ensure that the [Printers](#) configuration is correct before attempting to open/import any files from WinTotal v5.

---

### **Obsolete Printers**

Several printers have been made obsolete in WinTotal v6. For a list of these see the [Obsolete Printers](#) topic. If an obsolete printer is required please use WinTotal v5.

### **NOTE**

The T208M and T212M printers that are in WinTotal v6 were the models previously called T208M-NEW and T212M-NEW

---

### **Obsolete Products**

Several products have been made obsolete in WinTotal v6. For a list of these see the [Obsolete Products](#) topic.

If an obsolete products is required please use WinTotal v5.

If a v5 set is opened using an Obsolete Product the user will be prompted to convert it to a new one. In some cases a recommended product will be suggested. See the [Open Set](#) topic and [Obsolete Products](#) topic for more information.

---

### **Obsolete Fonts**

All Printer Embedded fonts have been made obsolete in WinTotal v6. For a list of these see the [Obsolete Fonts](#) topic. If these fonts are required please use WinTotal v5.

---

### **Advanced Label Editing**

The Advanced Label Editing option is no longer supported in v6. To make changes previously made in this function the **User Defined Layouts** option should be used. Here the **Advanced Editing** option can be used to make changes previously made in the **Advanced Label Editing**. If required a **User Defined Layout** can be created from a v5 **Set** where these **Advanced Label Editing** changes were made.

See the [User Defined Layouts](#) topic for more information.

---

## Basic Concepts

---

The following topics are available to give an overview of the WinTotal software.

### [Quick Start](#)

This will show how to quickly enter data and print.

### [Screen Overview](#)

This shows the main screen and the key parts used in operating WinTotal.

### [Mouse Operation](#)

This will show the mouse click options available within WinTotal.

### [Printer & Product Support](#)

This will show the printers, printer functions, fonts and compatible products supported by WinTotal.

### [Getting Data From External Sources](#)

This will explain the different options to retrieve data from external files/databases and print that data from WinTotal.

### [Serializations](#)

This will explain how serializations (counters) can be configured.

### [Data Entry Order](#)

This will explain the different options available for the order data can be entered into WinTotal.

### [System Administration](#)

This will explain the File System used by WinTotal, backup recommendations and user access control

## Quick Start

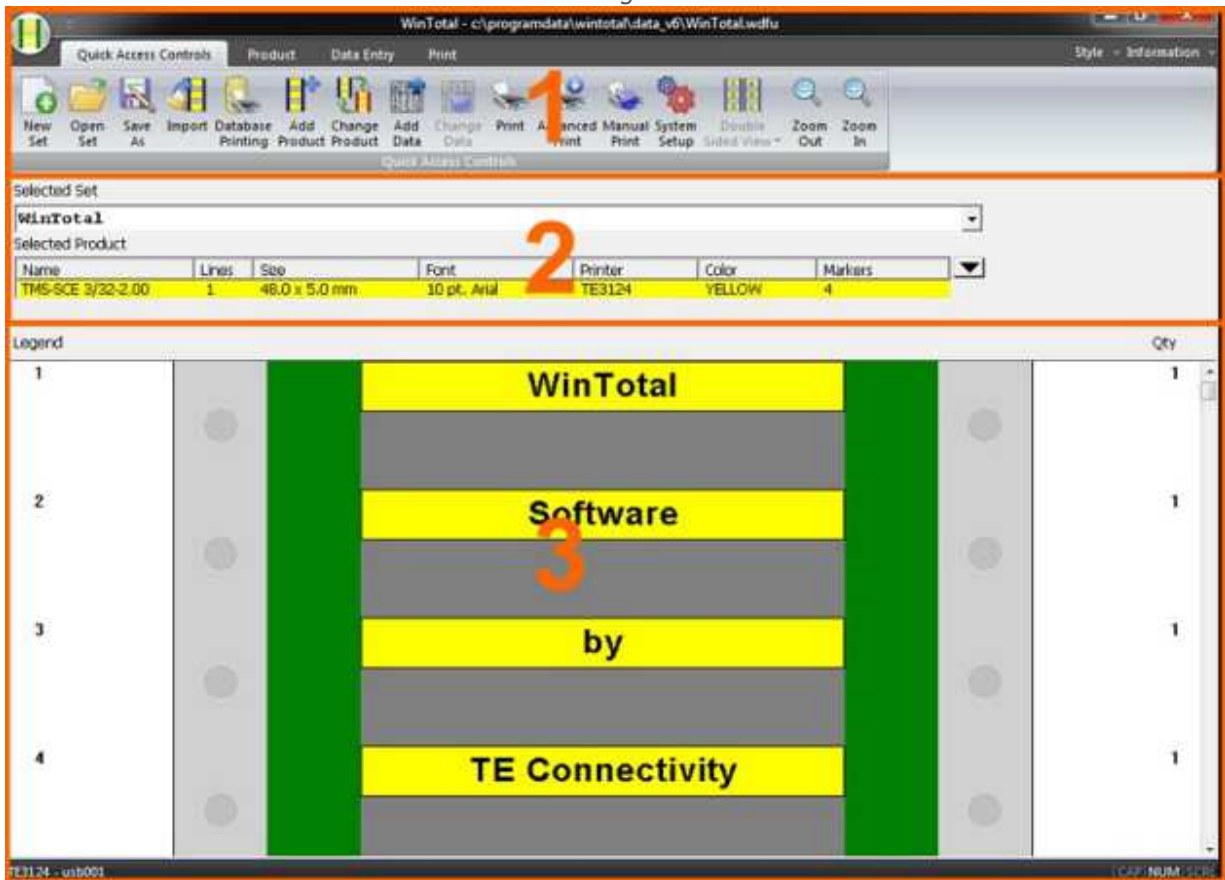
---



1. Press the [New Set](#) button to create a new file (Set).
2. Press the [Add Product](#) button to select the product and printing details.
3. Press the [Add Data](#) button and type in the data to be printed.
4. Press the [Print](#) button to print the data.

## Screen Overview

The WinTotal main screen is divided into the following sections:



- [WinTotal Button](#), [Ribbon](#), [Quick Access Toolbar](#), [Style Menu](#) and [Information Menu](#).
- [Set and Product Selection](#)
- [Legend Data](#)

## Set and Product Selection

---

This section contains 2 list boxes for selecting created **Sets** and **Products**.

Selected Set						
WinTotal						
Selected Product						
Name	Lines	Size	Font	Printer	Color	Markers
TMS-SCE 3/32-2.00	1	48.0 x 5.0 mm	10 pt, Arial	TE3124	YELLOW	4

[Selected Set](#)

[Selected Product](#)



## Selected Set

---

The **Selected Set** list box is used to select the current **Set** to be opened.



When clicked the list box will expand showing all available **Sets**, selecting one of them will make this the current **Set** to be used.

Only **Sets** in the current **Data Directory** will be available.

The current **Data Directory** is show at the top of the screen along with the **Selected Set**.



To select a different **Directory** the [New Set](#) command can be used to **Browse** to a new location.

Any new **Sets** that are created will automatically be added to this list box when they are created.

For more information about **Sets** see the [Data Management/Backup](#) topic.

## Selected Product

---

The **Selected Product** list box is used to select the **Product** to be opened within the [Selected Set](#)

Selected Product						
Name	Lines	Size	Font	Printer	Color	Markers
TMS-SCE 3/32-2.00	1	48.0 x 5.0 mm	10 pt. Arial	TE3124	YELLOW	4

Within a **Set** up to 100 different unique **Products** can be created and selectable.

When clicked the list box will expand showing all available **Products**, selecting one of them will make this the current **Product** to be used.

Only **Products** within the current [Selected Set](#) will be available.

The order that the list box is sorted as default is the order the **Products** are added. This can be temporarily be sorted by any available heading by clicking on it.

The list box as default displays the following information.

**Name** - this is the **Product Name**

**Lines** - this is the number of data **Lines** created on the **Product**.

**Size** - this will show the **Width** then **Height** of the **Product**.

**Font** - this will show the **Font** used in the **Product**.

**Printer** - this will show the **Printer** used in the **Product**.

**Color** - this will show the **Color** of the **Product** as text - the **Product** is always shown in **Color**.

**Markers** - this will show the quantity of **Markers** (rows of **Labels** or **Sleeves** ) within the **Product**.

The additional options are available to be used:

**Length** - this will show the **Length** of any **Continuous Product** that is selected.

**CPI** - this will show the CPI - Characters Per Inch value of the **Font** used in the **Product**.

**Double Sided** - this will display **Yes** or **No** to show if a **Double Sided Product** is selected.

**Bold** - this will show **Yes** or **No** to determine if the **Bold** option for a **Font** is selected.

**Horizontal Align** - this will show either **Left**, **Center** or **Right** to show the **Horizontal Align** of the **Lines** of data.

**Vertical Align** - this will show either **Top**, **Center** or **Bottom** to show the **Vertical Align** of the **Lines** of data.

**Height** - this will show the **Height** of the **Product**.

**Width** - this will show the **Width** of the **Product**.

**Rotation** - this will show either 0, 90, 180 or 270 to show the **Rotation** in ° for the **Lines** of data.

These can be configured via the [View](#) tab in the [System Setup](#) screen.