



Chipsmall Limited consists of a professional team with an average of over 10 year of expertise in the distribution of electronic components. Based in Hongkong, we have already established firm and mutual-benefit business relationships with customers from,Europe,America and south Asia,supplying obsolete and hard-to-find components to meet their specific needs.

With the principle of “Quality Parts,Customers Priority,Honest Operation,and Considerate Service”,our business mainly focus on the distribution of electronic components. Line cards we deal with include Microchip,ALPS,ROHM,Xilinx,Pulse,ON,Everlight and Freescale. Main products comprise IC,Modules,Potentiometer,IC Socket,Relay,Connector.Our parts cover such applications as commercial,industrial, and automotives areas.

We are looking forward to setting up business relationship with you and hope to provide you with the best service and solution. Let us make a better world for our industry!



## Contact us

Tel: +86-755-8981 8866 Fax: +86-755-8427 6832

Email & Skype: info@chipsmall.com Web: www.chipsmall.com

Address: A1208, Overseas Decoration Building, #122 Zhenhua RD., Futian, Shenzhen, China

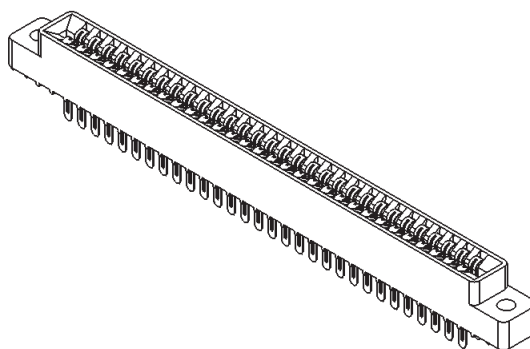




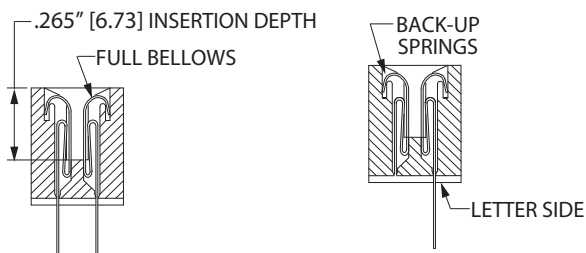
**.125" [3.18 mm] Contact Centers, .431" [10.95 mm] Insulator Height, Dip Solder/Eyelet/Right Angle for .062" [1.57 mm] or .031" [0.79 mm] Mating PCB**

## SPECIFICATIONS

- Accommodates .062" ± .008" [1.57 mm ± 0.20 mm] PC board or .031" ± .006" [0.79 mm ± 0.15 mm] PC board
- Molded-in key available
- 3 Amps current rating for one contact energized
- 30 milli Ohms maximum at rated current
- UL Flammability Rating: 94V-0



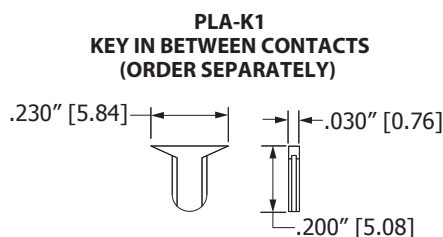
## READOUT



DUAL (D)

HALF LOADED (H)

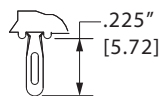
## POLARIZING KEY



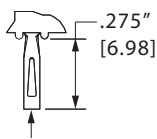
CONSULT FACTORY FOR MOLDED-IN KEY

## TERMINATION TYPE

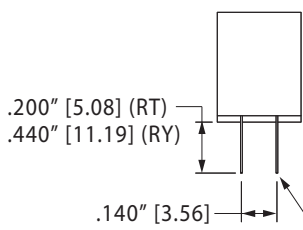
### EYELET ACCEPTS 3-#26 AWG



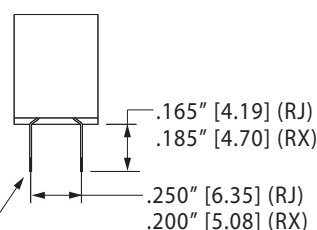
EYELET  
(RE)



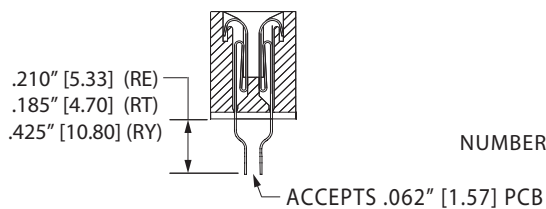
EYELET  
(TE)



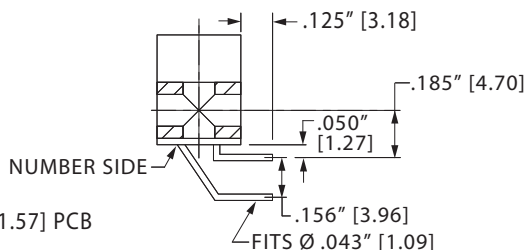
NARROW DIP SOLDER  
(RT, RY)



WIDE DIP SOLDER  
(RJ, RX)

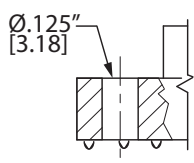


CARD EXTENDER  
REQUIRES -S13 MODIFICATION CODE  
(RE,RT,RY TERMINATIONS ONLY)

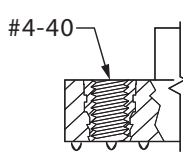


RIGHT ANGLE  
(RA)

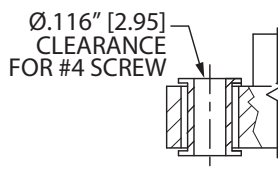
## MOUNTING STYLE



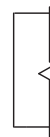
CLEARANCE HOLE (H)



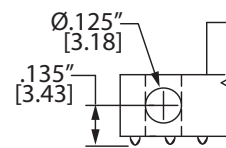
THREADED INSERT (I)



FLOATING BOBBIN (F)



NO MOUNTING EARS (N)



SIDE MOUNTING (S)





**.125" [3.18 mm] Contact Centers, .431" [10.95 mm] Insulator Height, Dip Solder/Eyelet/Right Angle for .062" [1.57 mm] or .031" [0.79 mm] Mating PCB**

### PART NUMBER OPTIONS

#### MATERIALS (INSULATOR/CONTACT)

- E = PBT/Phosphor Bronze (Standard)
- R = PPS/Phosphor Bronze
- G = PA9T/Phosphor Bronze
- H = PBT/Beryllium Copper
- A = PPS/Beryllium Copper
- J = PA9T/Beryllium Copper
- \*F = PPS/Spinodal (Overall Gold Plating Only)
- Consult factory for special soldering guidelines.
- \*C = PPS/Beryllium Nickel (Overall Gold Plating Only)
- \*W = PEEK/Beryllium Nickel (Overall Gold Plating Only)
- \*Consult factory for availability.
- Refer to Page 7 for Operating/Processing Temperatures

#### CONTACT FINISH - RoHS Compliant

All platings are Lead Free and have .000050" Nickel underplate

Contact Surface	Termination
B = .000010" Gold	.000100" Pure Tin, Matte
C = .000030" Gold	.000100" Pure Tin, Matte
G = .000010" Gold	.000005" Gold
Y = .000030" Gold	.000005" Gold
Contact Surface	Overall Plating
S = .000010" Gold	.000010" Gold
M = .000030" Gold	.000010" Gold
E = .000100" Pure Tin, Matte	.000100" Pure Tin, Matte

#### CONTACT CENTERS

A = .125" [3.18 mm]

**E B A 43 D R E H - Sxxx**

#### MODIFICATION CODE (Consult Factory)

OMIT FOR STANDARD

-S13 = Card Extender Accepts .062" [1.57 mm] PCB (RE, RT, RY Terminations Only)

-S734 = .031" ± .006" [0.79 mm ± 0.15 mm] Thick PCB

#### MOUNTING STYLE (Opposite Page)

H = .125" [3.18 mm] Clearance Holes

N = No Mounting

S = Side Mounting

I = Threaded Insert

F = Floating Bobbin

#### TERMINATION TYPE (Opposite Page)

RA = Right Angle

RE = Eyelet (Standard)

TE = Eyelet (Overall Plated Only)

RT = .140" [3.56 mm] X .200" [5.08 mm] Dip Solder

RY = .140" [3.56 mm] X .440" [11.19 mm] Dip Solder

RX = .200" [5.08 mm] X .185" [4.70 mm] Dip Solder

RJ = .250" [6.35 mm] X .165" [4.19 mm] Dip Solder

#### READOUT (Opposite Page)

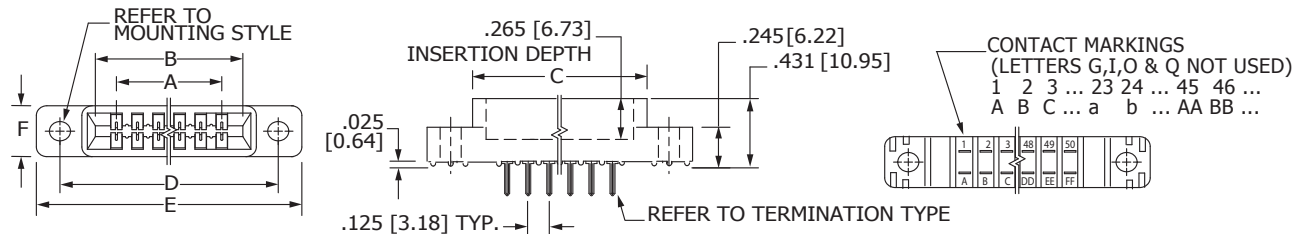
D = Dual

H = Half Loaded

#### NUMBER OF CONTACT POSITIONS

See Chart Below

### DIMENSIONS Dimensions in [ ] are in millimeters, all others are in inches.



Tolerances on non-critical dimensions may vary slightly due to shrinkage differential per insulator material; Consult factory.

POSITIONS/ CONTACTS	INCHES						MILLIMETERS					
	A±.008	B±.008	C±.015	D±.010	E±.020	F+-.005/-0.015	A±0.20	B±0.20	C±0.38	D±0.25	E±0.51	F+0.13/-0.38
06/12	0.625	0.875	1.035	1.295	1.575	0.330	15.88	22.23	26.29	32.89	40.01	8.38
10/20	1.125	1.375	1.535	1.795	2.075		28.58	34.93	38.99	45.59	52.71	
14/28	1.625	1.875	2.035	2.295	2.575		41.28	47.63	51.69	58.29	65.41	
15/30	1.750	2.000	2.160	2.420	2.700		44.45	50.80	54.86	61.47	68.58	
18/36	2.125	2.375	2.535	2.795	3.075		53.98	60.33	64.39	70.99	78.11	
22/44	2.625	2.875	3.035	3.295	3.575		66.68	73.03	77.09	83.69	90.81	
28/56	3.375	3.625	3.785	4.045	4.325		85.73	92.08	96.14	102.74	109.86	
30/60	3.625	3.875	4.035	4.295	4.575		92.08	98.43	102.49	109.09	116.21	
31/62	3.750	4.000	4.160	4.420	4.700		95.25	101.60	105.66	112.27	119.38	
35/70	4.250	4.500	4.660	4.920	5.200		107.95	114.30	118.36	124.97	132.08	
36/72	4.375	4.625	4.785	5.045	5.325		111.13	117.48	121.54	128.14	135.26	
37/74	4.500	4.750	4.910	5.170	5.450		114.30	120.65	124.71	131.32	138.43	
40/80	4.875	5.125	5.285	5.545	5.825	123.83	130.18	134.24	140.84	147.96	9.40	
43/86	5.250	5.500	5.660	5.920	6.200	133.35	139.70	143.76	150.37	157.48		
44/88	5.375	5.625	5.785	6.045	6.325	136.53	142.88	146.94	153.54	160.66		
49/98	6.000	6.250	6.410	6.670	6.950	152.40	158.75	162.81	169.42	176.53		
50/100	6.125	6.375	6.535	6.795	7.075	155.58	161.93	165.99	172.59	179.71		