



Chipsmall Limited consists of a professional team with an average of over 10 year of expertise in the distribution of electronic components. Based in Hongkong, we have already established firm and mutual-benefit business relationships with customers from,Europe,America and south Asia,supplying obsolete and hard-to-find components to meet their specific needs.

With the principle of "Quality Parts,Customers Priority,Honest Operation,and Considerate Service",our business mainly focus on the distribution of electronic components. Line cards we deal with include Microchip,ALPS,ROHM,Xilinx,Pulse,ON,Everlight and Freescale. Main products comprise IC,Modules,Potentiometer,IC Socket,Relay,Connector.Our parts cover such applications as commercial,industrial, and automotives areas.

We are looking forward to setting up business relationship with you and hope to provide you with the best service and solution. Let us make a better world for our industry!



## Contact us

Tel: +86-755-8981 8866 Fax: +86-755-8427 6832

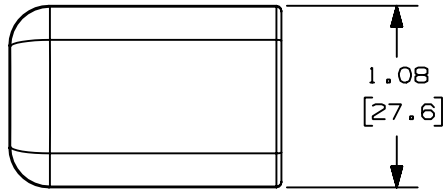
Email & Skype: info@chipsmall.com Web: www.chipsmall.com

Address: A1208, Overseas Decoration Building, #122 Zhenhua RD., Futian, Shenzhen, China



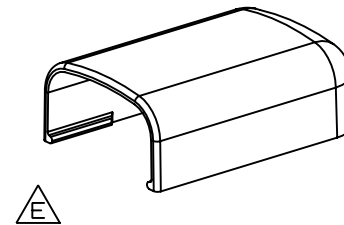
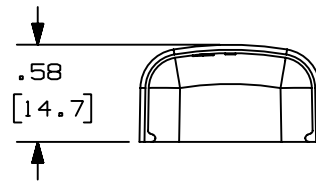
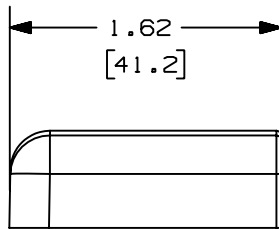
THIS COPY IS PROVIDED ON A RESTRICTED BASIS AND IS NOT TO BE USED IN ANY WAY DETRIMENTAL TO THE INTERESTS OF PANDUIT CORP.

$\triangle B$	PANDUIT P/N	WEIGHT
$\triangle C$	ECF5	0.79 LB/100 PCS. (358g/100 PCS.)



$\triangle D$  NOTES:

1. SEE CURRENT CATALOG FOR ADDITIONAL PART NUMBER SUFFIXES TO INDICATE COLOR AND OR PACKAGE QUANTITY.
2. DIMENSIONS IN PARENTHESIS ARE IN METRIC.



CAD FILENAME/LAYERS D34474BF\_DC\_ECF5\_01.prt

								PANDUIT CORP. TINLEY PARK, ILLINOIS	
6	7-2-02	JHN	RMHI	F. REVISED MATERIAL IN DRAWING TITLE BLOCK.	19159	RGRO	RGRO	END CAP FITTING (ECF5) CUSTOMER DRAWING	
5	8-28-00	MSO	HIW	E. REVISED AND REDRAWN ON CAD.	19159	HIW	HIW	UNLESS OTHERWISE SPECIFIED, DIMENSIONAL TOLERANCES ARE: (.X) ± (.XXX) ± (.XX) ± .03 (.8) ANGLES ±	
4	10-3-91	DW	CF	D. REVISED NOTE AND REMOVED COLOR FROM DRAWING.	19159		CF	UNLESS OTHERWISE SPECIFIED, ALL DIMENSIONS ARE GIVEN IN INCHES, THIRD ANGLE PROJECTION.	
3	2-28-91	DW	CF	C. REVISED COLORS: OMIT BG, LI, LG. ADDED INT. WHITE AND INT. GRAY.	19159		WJB	SCALE FULL	
2	12-2-87	LDB	WJB	B. ADDED PART NUMBERS ECF5E1 AND ECF5L1.	19159		WJB	DRAWING NO. SS-19159	
1	10-1-84	CEW	HP	A. POLYSTYRENE WAS ABS.	19159		AJC	DWB A	
R	8-14-84	RS	HP	DRAWING RELEASED	19159			SIZE	
REV	DATE	BY	CHK	DESCRIPTION	ECN - R	CUST	SUP		

DRAWN BY RS  
DATE 8-8-84  
CHK'D HP

MAT'L:

ABS  $\triangle F$

$\triangle A$